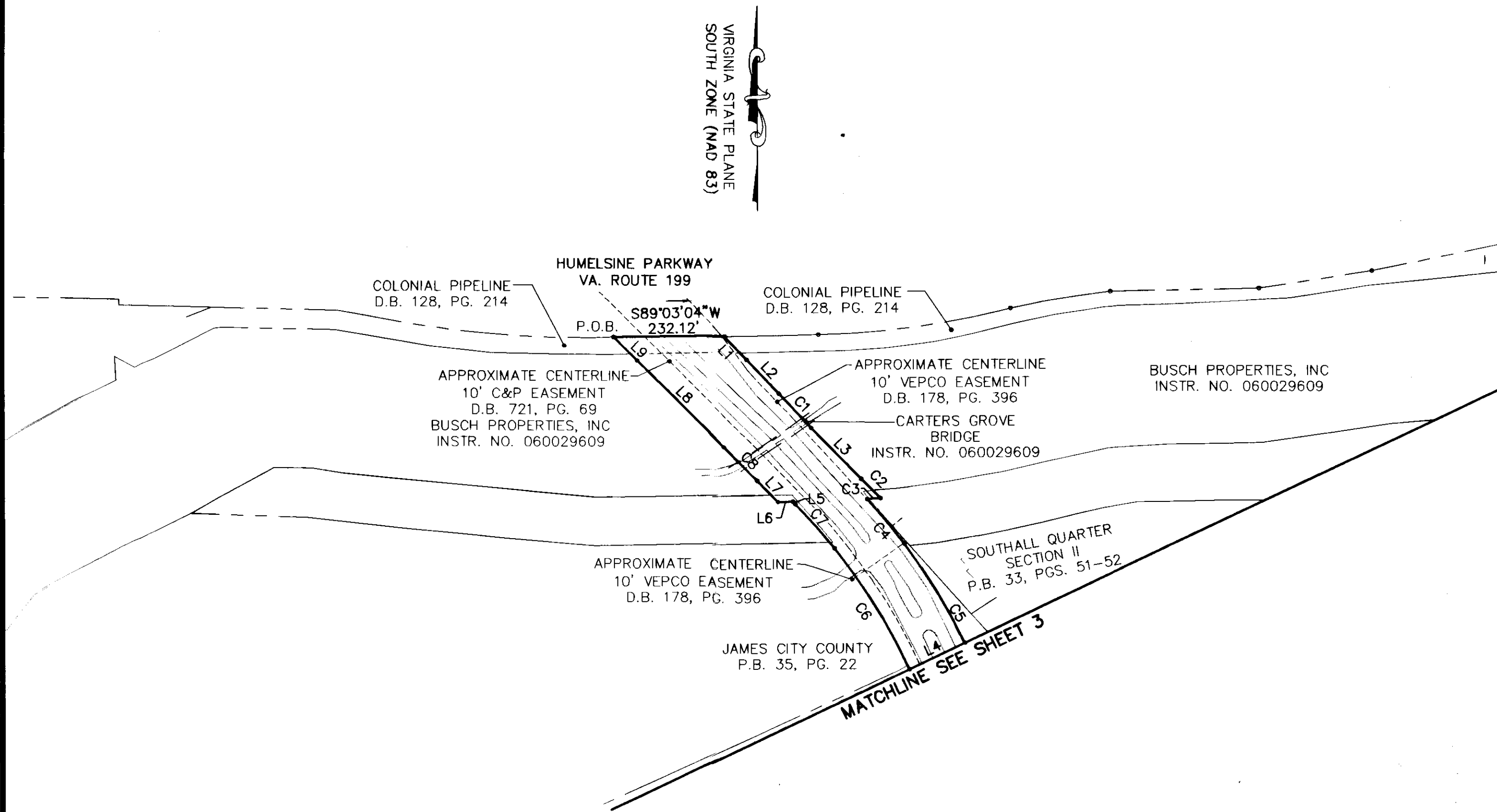


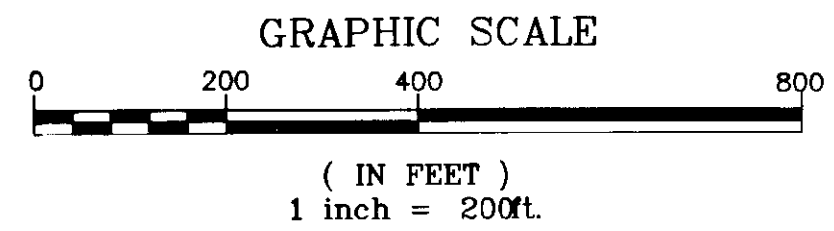
100014989

VIRGINIA STATE PLANE
SOUTH ZONE (NAD 83)



CURVE TABLE						
CURVE	LENGTH	RADIUS	TANGENT	CHORD	CHORD BEARING	DELTA
C1	98.96'	6331.16'	49.48'	98.96'	N42°56'04"W	0°53'44"
C2	58.04'	1254.05'	29.02'	58.03'	S44°51'52"E	2°39'06"
C3	28.59'	2086.39'	14.30'	28.59'	S86°02'53"W	0°47'06"
C4	122.40'	1231.55'	61.25'	122.35'	S39°36'28"E	5°41'39"
C5	244.79'	1231.55'	122.80'	244.39'	S31°03'59"E	11°23'18"
C6	300.00'	1225.35'	150.75'	299.25'	N31°25'20"W	14°01'39"
C7	124.91'	1225.35'	62.51'	124.86'	N41°21'27"W	5°50'26"
C8	98.96'	6331.16'	49.48'	98.96'	N44°43'32"W	0°53'44"
C9	206.19'	1231.35'	103.34'	205.95'	S20°34'32"E	9°35'40"
C10	805.04'	1213.83'	417.96'	790.37'	S03°13'14"W	38°00'00"
C11	836.18'	1269.09'	433.90'	821.14'	S03°20'41"W	37°45'04"
C12	602.45'	534.06'	337.83'	571.01'	S47°50'50"E	64°37'58"
C13	811.04'	2283.74'	409.84'	806.79'	S69°59'23"E	20°20'52"
C14	613.49'	670.03'	330.14'	592.29'	S86°02'46"E	52°27'40"
C15	949.07'	843.02'	531.94'	899.74'	S80°01'31"E	64°30'12"
C16	646.66'	1407.00'	329.15'	640.99'	S60°56'25"E	26°20'00"
C17	107.32'	930.00'	53.72'	107.26'	S27°40'14"W	6°36'43"
C18	486.52'	2230.30'	244.23'	485.56'	N64°01'22"W	12°29'55"
C19	259.53'	1487.00'	130.09'	259.20'	N52°46'24"W	10°00'00"
C20	859.01'	763.02'	481.46'	814.36'	N80°01'31"W	64°30'13"
C21	686.74'	750.03'	369.56'	663.00'	N86°02'46"E	52°27'39"
C22	782.63'	2203.74'	395.48'	778.52'	N69°59'23"W	20°20'52"
C23	451.85'	686.54'	234.45'	443.74'	N61°18'32"W	37°42'34"
C24	47.88'	30.00'	30.76'	42.96'	N88°10'25"W	91°26'20"
C25	66.35'	103.00'	34.37'	65.21'	S18°58'58"E	36°54'40"
C26	127.11'	686.54'	63.74'	126.93'	S20°50'06"E	10°36'29"
C27	996.49'	1512.39'	517.09'	978.56'	S03°20'42"W	37°45'05"
C28	997.22'	1225.35'	528.09'	969.93'	N01°05'39"W	46°37'44"

LINE TABLE		
LINE	LENGTH	BEARING
L1	67.75'	S43°22'56"E
L2	97.48'	S43°22'56"E
L3	149.85'	S44°16'40"E
L4	128.45'	S64°37'41"W
L5	6.72'	S44°16'40"E
L6	30.93'	N89°03'04"E
L7	62.84'	S44°16'40"E
L8	255.11'	S45°10'24"E
L9	69.78'	N45°10'24"W
L10	10.00'	S09°50'11"W
L11	200.00'	S80°09'49"E
L12	218.09'	S59°48'58"E
L13	145.00'	S47°46'23"E
L14	81.77'	S74°06'30"E
L15	145.00'	N47°46'27"W
L16	218.09'	N59°48'57"W
L17	200.00'	N80°09'49"W
L18	10.00'	S09°50'11"W
L19	50.29'	N43°53'35"W
L20	16.99'	N37°26'18"W
L21	48.20'	N00°31'38"W



3 Large/Small Plat(s) Recorded herewith as # 100014989

City of Williamsburg & County of James City Circuit Court: This PLAT was recorded on 26 July 2010 at 3:48 AM/PM, PG. DOCUMENT # 100014989 BETSY B. WOOLRIDGE, CLERK

**BOUNDARY PLAT
PARCEL R-16
MOUNTS BAY ROAD
A PORTION OF
TAX PARCEL 5030100001
STANDING IN THE NAME OF
BUSCH PROPERTIES INC.
ROBERTS DISTRICT, JAMES CITY COUNTY, VIRGINIA
DATE: 4/7/2010 SCALE: 1"=200'
REVISED: 7/21/2010
SHEET 3 OF 3**

LANDMARK DESIGN GROUP
Engineers • Planners • Surveyors
Landscape Architects • Environmental Consultants
One Columbus Center Suite 1100 Virginia Beach, VA 23462 Tel: (757) 473-2000 Fax: (757) 497-7933 Email: lmdg@landmarkdg.com