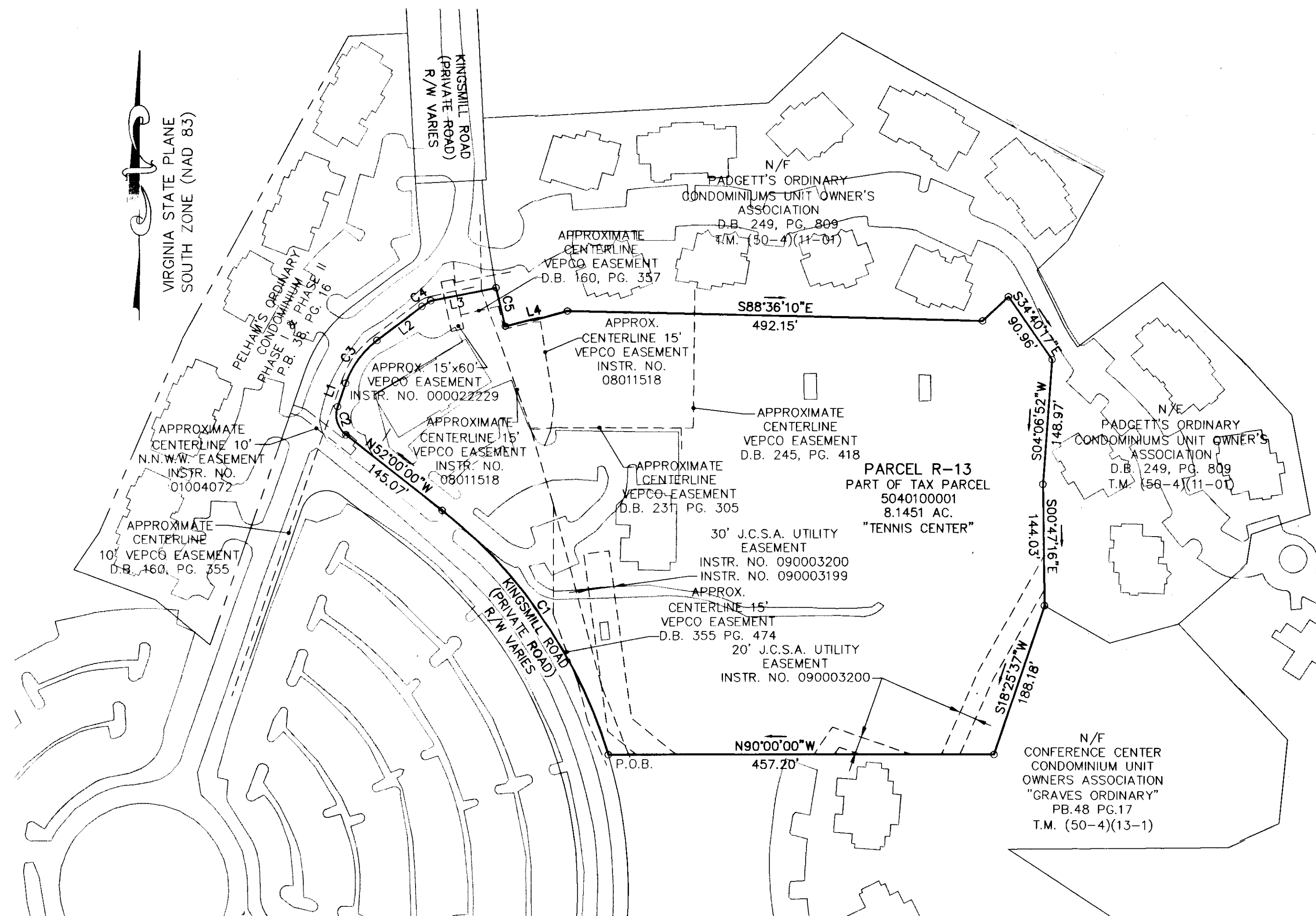


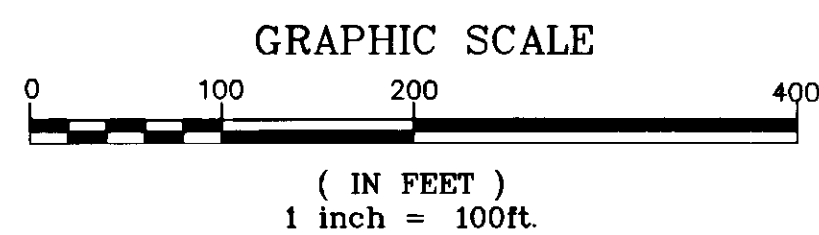
100014987

BOUNDARY PLAT
PARCEL R-13
 A PORTION OF
 TAX PARCEL 5040100001
 STANDING IN THE NAME OF
 BUSCH PROPERTIES INC.
 ROBERTS DISTRICT, JAMES CITY COUNTY, VIRGINIA
 DATE: 4/7/2010 SCALE: 1"=100'
 REVISED 7/21/2010
 SHEET 2 OF 2



LINE TABLE		
LINE	LENGTH	BEARING
L1	29.53'	N18°58'53"E
L2	67.09'	N52°32'58"E
L3	79.00'	N78°15'43"E
L4	76.55'	N75°07'16"E

CURVE TABLE						
CURVE	LENGTH	RADIUS	TANGENT	CHORD	CHORD BEARING	DELTA
C1	356.07'	575.00'	183.95'	350.41'	N34°15'35"W	35°28'50"
C2	37.16'	29.99'	21.39'	34.83'	S16°29'59"E	71°00'01"
C3	64.45'	110.00'	33.18'	63.53'	S35°45'56"W	33°34'05"
C4	12.46'	80.00'	6.24'	12.45'	S57°00'44"W	8°55'32"
C5	47.37'	863.94'	23.69'	47.36'	S13°18'32"E	3°08'29"



2 Large/Small Plat(s) Recorded
 hereunder as # 100014987

City of Williamsburg & County of James City
 Circuit Court: This PLAT was recorded on
 26 July 2010
 at 3:40 AM/PM, P.B. PG.
 DOCUMENT # 100014987
 BETSY B. WOOLRIDGE, CLERK
 Betsy B. Woolridge Clerk

LANDMARK
DESIGN GROUP
 Landscape Architects • Environmental Consultants

One Columbus Center
 Suite 1100
 Virginia Beach, VA 23462
 Tel. (757) 473-2000
 Fax (757) 497-7933
 Email: lmdg@landmarkdg.com