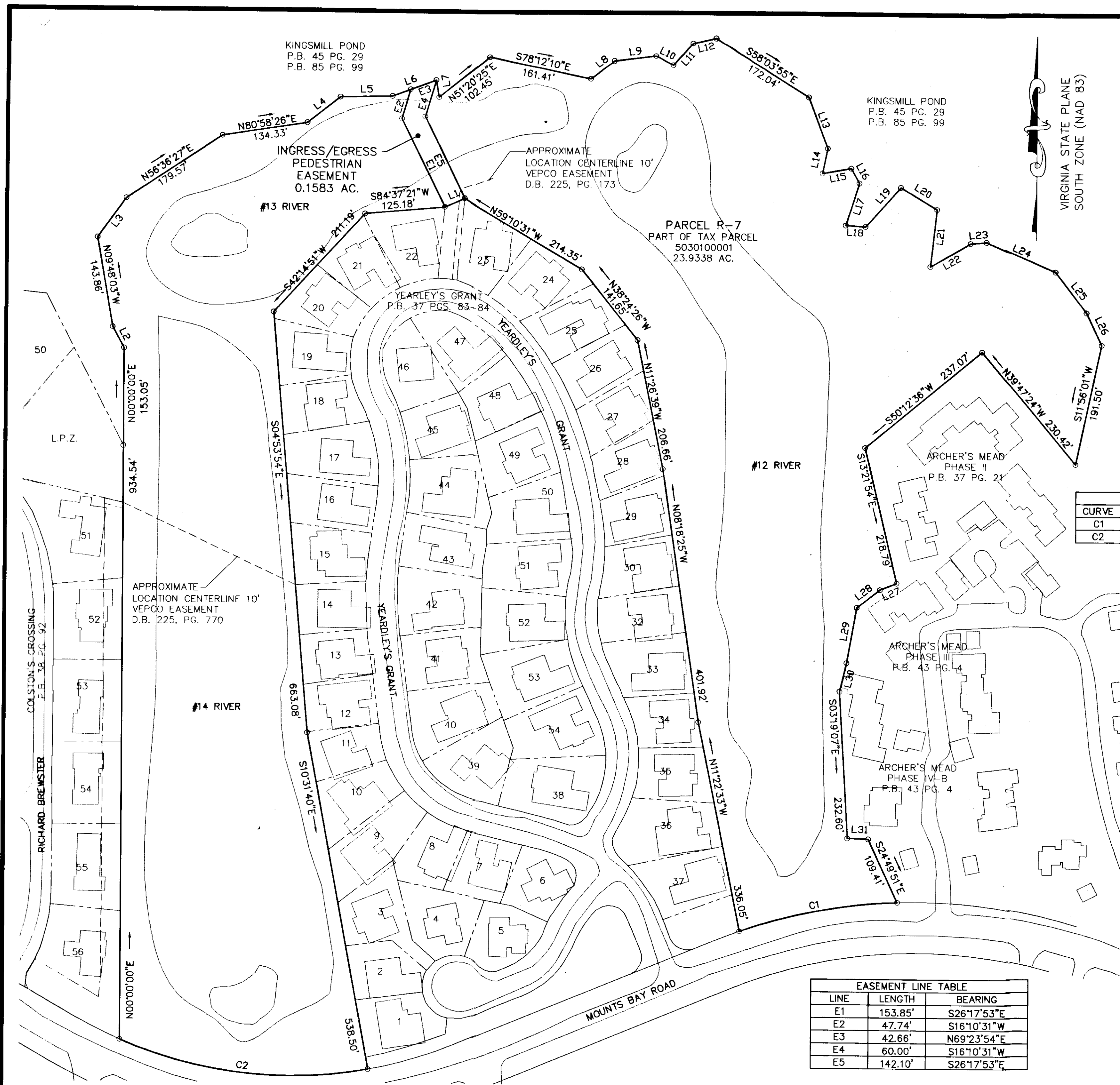


100014980



LINE TABLE		
LINE	LENGTH	BEARING
L1	34.21'	S66°16'49"W
L2	37.77'	N28°34'06"W
L3	76.03'	N35°44'55"E
L4	65.82'	N51°26'05"E
L5	81.60'	N88°34'34"E
L6	72.96'	N69°23'54"E
L7	27.21'	S09°08'07"E
L8	46.40'	N52°52'59"E
L9	65.49'	N82°59'01"E
L10	30.41'	S62°35'33"E
L11	46.01'	N42°21'27"E
L12	36.88'	N77°28'16"E
L13	85.44'	S29°28'33"E
L14	39.81'	S11°35'32"W
L15	45.71'	N79°55'10"E
L16	26.42'	S29°28'33"E
L17	69.26'	S17°39'00"W
L18	31.06'	S86°18'31"E
L19	82.88'	N41°34'34"E
L20	66.37'	S59°11'03"E
L21	90.55'	S06°20'25"W
L22	73.06'	N59°34'27"E
L23	25.08'	N85°25'34"E
L24	118.19'	S66°02'15"E
L25	80.60'	S37°26'19"E
L26	56.34'	S25°13'57"E
L27	28.19'	S67°35'23"W
L28	45.67'	S52°02'02"W
L29	88.40'	S10°13'07"W
L30	45.67'	S13°14'25"W
L31	32.96'	S88°06'41"E

CURVE TABLE						
CURVE	LENGTH	RADIUS	TANGENT	CHORD	CHORD BEARING	DELTA
C1	252.53'	843.02'	127.22'	251.59'	S79°14'31"W	17°09'47"
C2	397.40'	670.03'	204.74'	391.60'	S83°32'10"E	33°58'57"

EASEMENT LINE TABLE		
LINE	LENGTH	BEARING
E1	153.85'	S26°17'53"E
E2	47.74'	S16°10'31"W
E3	42.66'	N69°23'54"E
E4	60.00'	S16°10'31"W
E5	142.10'	S26°17'53"E

2 (Large/Small Plats) Recorded
 Instrument # 100014980

City of Williamsburg & County of James City
 Circuit Court: This PLAT was recorded on
 at 3:00 AM/PM, P.B. PG. 26 July 2010
 DOCUMENT # 100014980
 BETSY B. WOOLRIDGE, CLERK
Betsy B. Woolridge Clerk

BOUNDARY PLAT
PARCEL R-7
 A PORTION OF
 TAX PARCEL 5030100001
 STANDING IN THE NAME OF
BUSCH PROPERTIES, INC.
 ROBERTS DISTRICT, JAMES CITY COUNTY, VIRGINIA
 DATE: 4/7/10 SCALE: 1"=100'
 REVISED 7/21/10
 SHEET 2 OF 2

LANDMARK DESIGN GROUP
 One Columbus Center
 Suite 1100
 Virginia Beach, VA 23462
 Tel. (757) 473-2000
 Fax (757) 497-7933
 Email: lmdg@landmarkdg.com
 Engineers • Planners • Surveyors
 Landscape Architects • Environmental Consultants