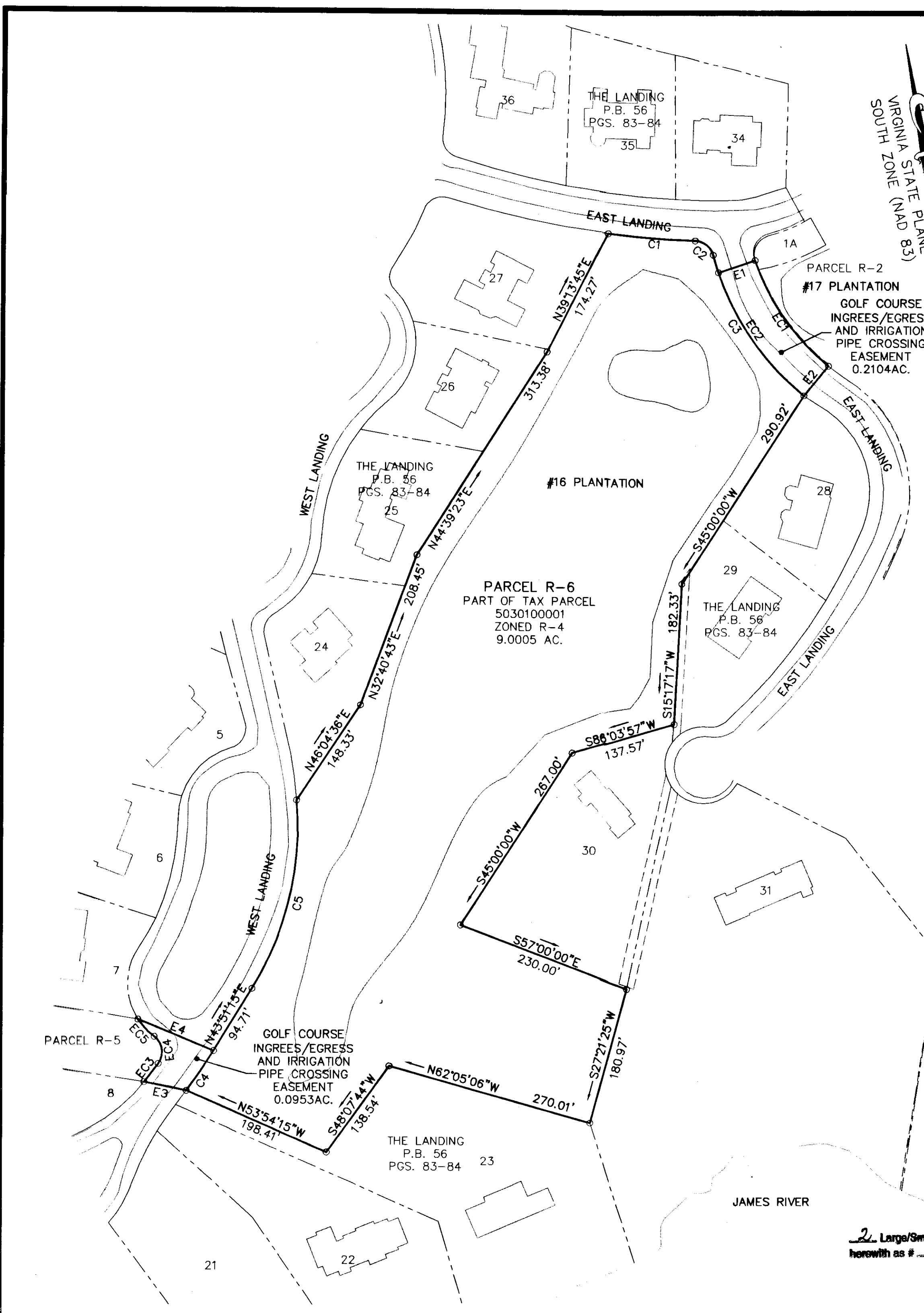


100014979



CURVE TABLE						
CURVE	LENGTH	RADIUS	TANGENT	CHORD	CHORD BEARING	DELTA
C1	112.83'	1225.00'	56.45'	112.79'	S73°02'11"E	5°16'38"
C2	32.00'	25.00'	18.61'	29.86'	N39°00'21"W	73°20'19"
C3	221.30'	350.00'	114.49'	217.63'	S20°27'01"E	36°13'38"
C4	62.61'	675.00'	31.33'	62.59'	N46°30'41"E	5°18'53"
C5	256.33'	400.61'	132.72'	251.98'	N25°31'26"E	36°39'38"

EASEMENT LINE TABLE		
LINE	LENGTH	BEARING
E1	50.00'	S83°45'12"W
E2	50.00'	N51°26'10"E
E3	55.82'	N66°08'44"W
E4	105.97'	S55°08'00"E

EASEMENT CURVE TABLE						
CURVE	LENGTH	RADIUS	TANGENT	CHORD	CHORD BEARING	DELTA
EC1	169.21'	300.00'	86.92'	166.98'	S22°24'19"E	32°19'02"
EC2	197.41'	350.00'	101.41'	194.81'	S22°24'19"E	32°19'02"
EC3	30.11'	625.00'	15.06'	30.11'	N49°58'36"E	2°45'38"
EC4	39.22'	25.00'	24.95'	35.32'	N03°39'26"E	89°53'08"
EC5	31.00'	85.00'	15.67'	30.83'	N30°50'06"W	20°53'50"

BOUNDARY PLAT
R-6
 A PORTION OF
 TAX PARCEL 5030100001
 STANDING IN THE NAME OF
BUSCH PROPERTIES INC.
 ROBERTS DISTRICT, JAMES CITY COUNTY, VIRGINIA
 DATE: 4/7/10 SCALE: 1"=100'
 REVISED 7/21/10
 SHEET 2 OF 2

City of Williamsburg & County of James City
 Circuit Court: This PLAT was recorded on
 at 2:49 PM July 2010 PG -
 DOCUMENT # 100014979
 BETSY B. WOOLRIDGE, CLERK
 Betsy B. Woolridge Clerk

**LANDMARK
 DESIGN GROUP**

One Columbus Center
 Suite 1100
 Virginia Beach, VA 23462
 Tel. (757) 473-2000
 Fax (757) 497-7933
 Email: lmdg@landmarkdg.com