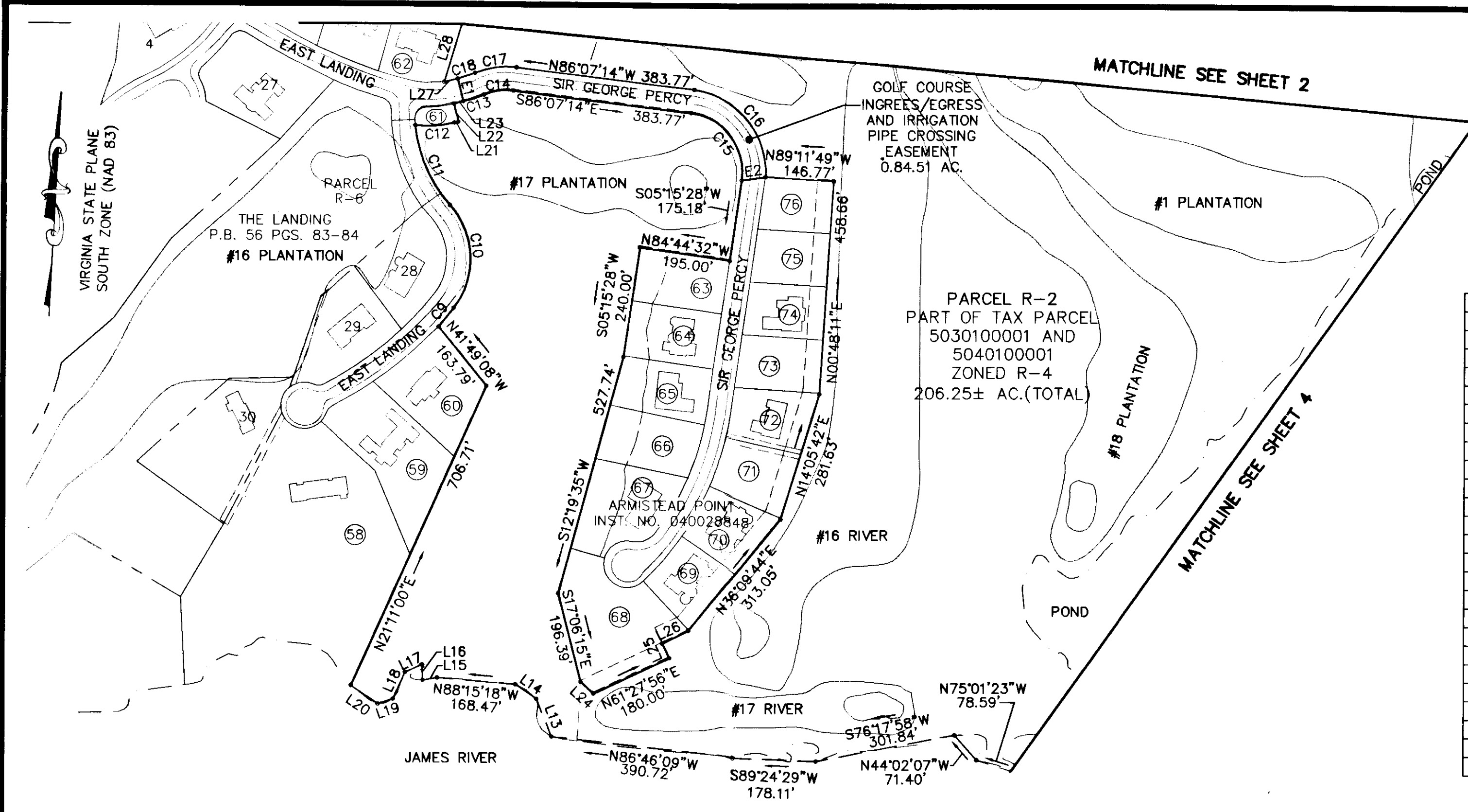


100014944



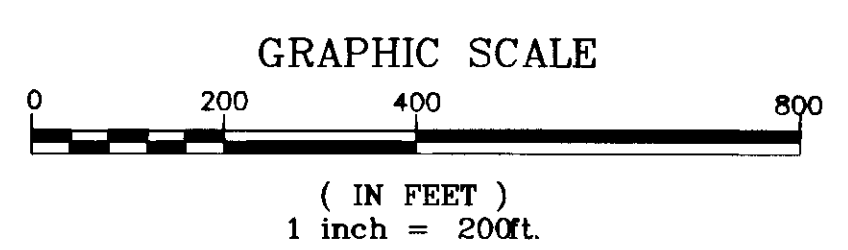
EASEMENT CURVE TABLE						
CURVE	LENGTH	RADIUS	TANGENT	CHORD	CHORD BEARING	DELTA
EC1	121.73'	200.00'	62.82'	119.86'	N40°10'55"W	34°52'27"
EC2	152.17'	250.00'	78.52'	149.83'	N40°10'55"W	34°52'26"
EC3	217.62'	225.00'	118.17'	209.24'	S50°27'11"E	55°24'59"

EASEMENT LINE TABLE		
LINE	LENGTH	BEARING
E1	50.00'	N16°43'18"E
E2	51.47'	S78°56'05"W
E3	50.00'	N32°22'52"E
E4	50.00'	S11°50'19"W

LINE TABLE			LINE TABLE		
LINE	LENGTH	BEARING	LINE	LENGTH	BEARING
L1	103.71'	S52°00'00"E	L25	35.00'	N28°32'04"W
L2	93.12'	S77°48'09"W	L26	61.82'	N61°27'56"E
L3	99.57'	S64°29'06"W	L27	29.62'	S73°16'42"W
L4	89.46'	S52°03'19"W	L28	129.82'	N13°41'18"E
L5	52.88'	S87°36'56"W	L29	67.54'	N57°05'29"W
L6	133.38'	N44°27'56"W	L30	41.53'	N06°52'20"E
L7	186.76'	N82°02'16"W	L31	153.20'	N21°15'18"E
L8	143.47'	S88°28'56"W	L32	25.08'	S36°19'37"W
L9	87.77'	S82°29'47"W	L33	154.86'	S03°54'02"E
L10	64.53'	N84°37'17"E	L34	189.33'	S53°17'50"E
L11	112.44'	S88°15'25"E	L35	65.69'	S33°57'13"W
L12	104.02'	S77°54'43"E	L36	50.00'	S15°08'37"W
L13	87.55'	N24°59'57"W	L37	95.65'	N88°51'24"W
L14	54.18'	N58°07'32"W	L38	26.18'	S11°02'36"W
L15	31.42'	S77°24'21"W	L39	125.42'	S72°03'10"E
L16	33.53'	N05°13'08"W	L40	102.33'	S79°22'04"E
L17	40.02'	S62°18'06"W	L41	31.59'	N67°43'23"E
L18	62.99'	S21°23'44"W	L42	20.01'	S01°10'30"E
L19	34.72'	S68°52'55"W	L43	5.00'	S47°46'25"E
L20	69.53'	N57°53'52"W	L44	51.22'	N17°30'02"E
L21	9.48'	S73°16'42"W	L45	50.00'	S72°29'58"E
L22	40.00'	S16°43'18"E	L46	32.55'	S17°30'02"W
L23	20.15'	N73°16'42"E	L47	3.40'	S74°06'09"W
L24	37.66'	S50°12'51"E			

CURVE TABLE						
CURVE	LENGTH	RADIUS	TANGENT	CHORD	CHORD BEARING	DELTA
C1	447.55'	930.00'	228.20'	443.25'	S10°34'41"W	27°34'23"
C2	57.07'	30.00'	42.06'	48.85'	S73°28'41"W	109°00'12"
C3	522.73'	515.00'	286.39'	500.58'	N22°55'20"W	58°09'21"
C4	52.28'	30.00'	35.66'	45.91'	N56°04'58"E	99°50'51"
C5	212.02'	370.00'	109.01'	209.13'	N57°34'39"W	32°49'55"
C6	45.21'	80.30'	23.22'	44.62'	N25°01'47"W	32°15'34"
C7	129.11'	311.00'	65.50'	128.18'	S59°22'27"W	23°47'08"
C8	268.57'	139.00'	201.13'	228.70'	S77°09'59"E	110°42'16"
C9	51.63'	725.00'	25.83'	51.62'	N36°01'22"E	4°04'50"
C10	240.28'	175.00'	143.41'	221.85'	N05°21'07"W	78°40'07"
C11	188.88'	300.00'	97.69'	185.77'	S26°38'59"E	36°04'24"
C12	83.88'	247.13'	42.35'	83.48'	N83°00'37"E	19°26'50"
C13	47.01'	300.00'	23.55'	46.96'	N68°47'22"E	8°58'40"
C14	64.53'	125.00'	33.00'	63.82'	S79°05'26"W	29°34'48"
C15	199.36'	125.00'	128.05'	178.89'	N40°25'52"W	91°22'45"
C16	264.62'	175.00'	165.02'	240.12'	N42°48'07"W	86°38'13"
C17	90.34'	175.00'	46.20'	89.34'	S79°05'24"W	29°34'44"
C18	39.17'	250.00'	19.63'	39.13'	N68°47'22"E	8°58'40"
C19	344.77'	400.00'	183.91'	334.20'	N32°23'57"W	49°23'05"
C20	142.70'	265.94'	73.11'	140.99'	S41°43'06"E	30°44'39"
C21	7.13'	525.00'	3.57'	7.13'	N26°44'08"W	0°46'43"
C22	186.61'	200.00'	100.72'	179.91'	N49°28'29"W	53°27'35"
C23	265.98'	275.00'	144.43'	255.73'	S50°27'11"E	55°24'59"
C24	227.77'	145.00'	145.00'	205.06'	N56°50'22"E	90°00'06"
C25	69.85'	425.00'	35.00'	69.77'	S16°32'48"W	9°25'00"
C26	51.80'	30.00'	35.08'	45.60'	S70°43'10"W	98°55'44"
C27	426.43'	750.03'	219.15'	420.71'	S76°06'13"E	32°34'32"
C28	281.01'	763.02'	142.11'	279.42'	S78°16'25"W	21°06'04"
C29	259.53'	1487.00'	130.10'	259.20'	S52°46'25"E	10°00'00"
C30	486.54'	2230.30'	244.24'	485.57'	S64°01'23"E	12°29'56"
C31	50.55'	105.00'	25.78'	50.06'	N87°53'41"E	27°35'03"
C32	64.03'	1970.00'	32.02'	64.03'	S47°37'23"E	1°51'44"
C33	137.03'	2030.00'	68.54'	137.00'	S46°37'14"E	3°52'03"

OWNERS TABLE		
NO.	OWNER	TAX MAP
58	DRISKILL	(50-3)(12-31)
59	POPE	(50-3)(12-32)
60	CASEY	(50-3)(12-33)
61	BUSCH PROPERTIES, INC.	(50-3)(13-1A)
62	BRADISH	(50-3)(12-34)
63	GOLDSTEIN	(50-3)(13-1)
64	NOH	(50-3)(13-2)
65	HUTCHENS	(50-3)(13-3)
66	ROBERTSON	(50-3)(13-4)
67	KOKOLIS	(50-3)(13-5)
68	FANG	(50-3)(13-6)
69	DIVELY	(50-3)(13-7)
70	PACEK	(50-3)(13-8)
71	RITTER	(50-3)(13-9)
72	PASSARO	(50-3)(13-10)
73	RATHERT	(50-3)(13-11)
74	TONDORF	(50-3)(13-12)
75	MARQUE	(50-3)(13-13)
76	FISCELLA	(50-3)(13-14)



4 Large/Small Plat(s) Recorded herewith as # 100014944

BOUNDARY PLAT
PARCEL R-2
 A PORTION OF
 TAX PARCELS 5030100001 AND 5040100001
 STANDING IN THE NAME OF
 BUSCH PROPERTIES INC.
 ROBERTS DISTRICT, JAMES CITY COUNTY, VIRGINIA
 DATE: 4/7/10 SCALE: 1"=200'
 REVISED 7/21/10
 SHEET 3 OF 4

City of Williamsburg & County of James City
 Circuit Court: This PLAT was recorded on
 26 July 2010
 at 11:36 AM/PM, PG. 3
 DOCUMENT # 100014944
 BETSY B. WOOLRIDGE, CLERK
 Betsy B. Woolridge Clerk

LANDMARK
DESIGN GROUP
 Engineers • Planners • Surveyors
 Landscape Architects • Environmental Consultants

One Columbus Center
 Suite 1100
 Virginia Beach, VA 23462
 Tel. (757) 473-2000
 Fax (757) 497-7933
 Email: lmdg@landmarkdg.com