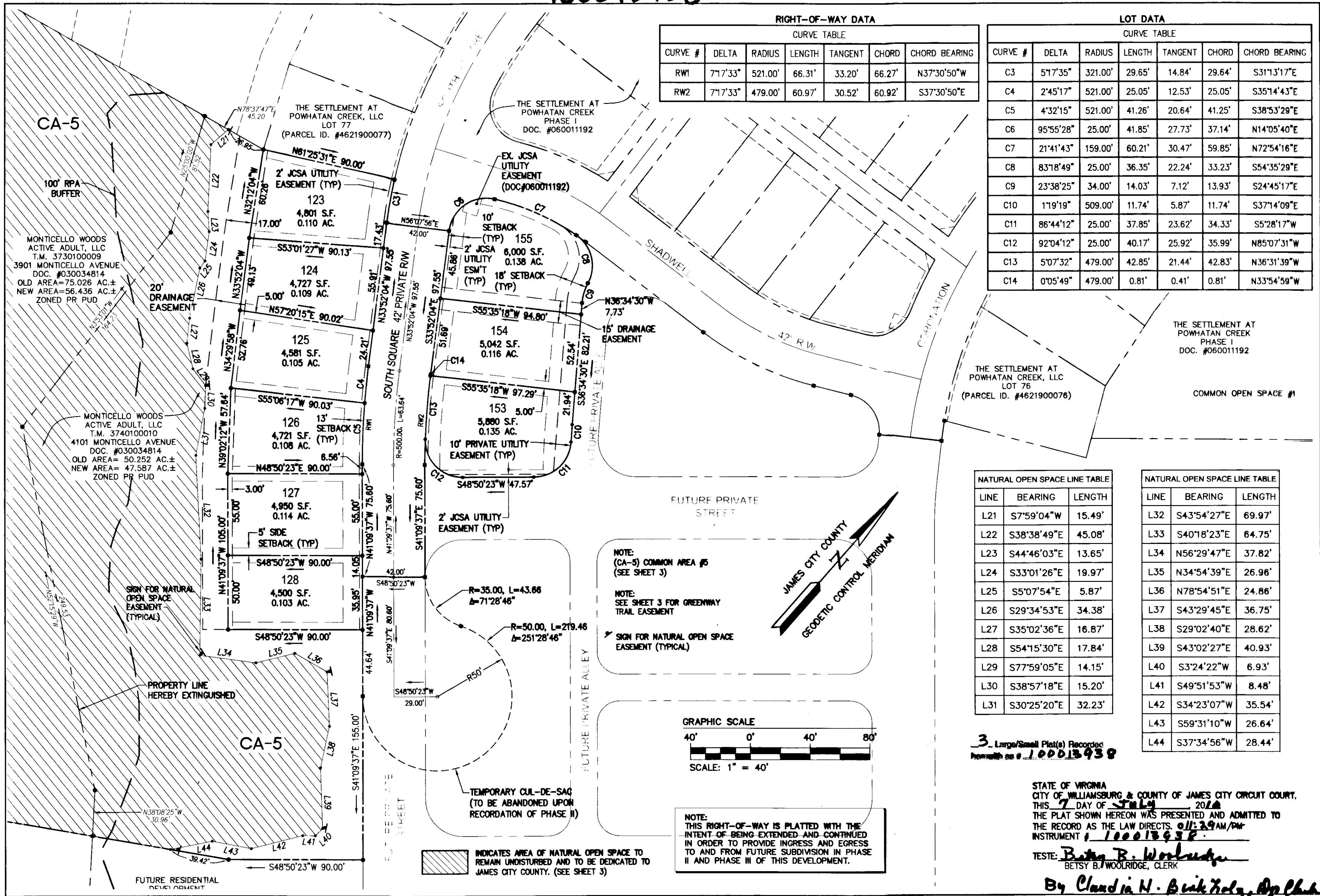


100013938



**RIGHT-OF-WAY DATA**

CURVE TABLE						
CURVE #	DELTA	RADIUS	LENGTH	TANGENT	CHORD	CHORD BEARING
RW1	71°7'33"	521.00'	66.31'	33.20'	66.27'	N37°30'50"W
RW2	71°7'33"	479.00'	60.97'	30.52'	60.92'	S37°30'50"E

**LOT DATA**

CURVE TABLE						
CURVE #	DELTA	RADIUS	LENGTH	TANGENT	CHORD	CHORD BEARING
C3	51°7'35"	321.00'	29.65'	14.84'	29.64'	S31°13'17"E
C4	2°45'17"	521.00'	25.05'	12.53'	25.05'	S35°14'43"E
C5	4°32'15"	521.00'	41.26'	20.64'	41.25'	S38°53'29"E
C6	95°55'28"	25.00'	41.85'	27.73'	37.14'	N14°05'40"E
C7	21°41'43"	159.00'	60.21'	30.47'	59.85'	N72°54'16"E
C8	83°18'49"	25.00'	36.35'	22.24'	33.23'	S54°35'29"E
C9	23°38'25"	34.00'	14.03'	7.12'	13.93'	S24°45'17"E
C10	11°19'19"	509.00'	11.74'	5.87'	11.74'	S37°14'09"E
C11	86°44'12"	25.00'	37.85'	23.62'	34.33'	S5°28'17"W
C12	92°04'12"	25.00'	40.17'	25.92'	35.99'	N85°07'31"W
C13	5°07'32"	479.00'	42.85'	21.44'	42.83'	N36°31'39"W
C14	0°05'49"	479.00'	0.81'	0.41'	0.81'	N33°54'59"W

**NATURAL OPEN SPACE LINE TABLE**

LINE	BEARING	LENGTH
L21	S7°59'04"W	15.49'
L22	S38°38'49"E	45.08'
L23	S44°46'03"E	13.65'
L24	S33°01'26"E	19.97'
L25	S5°07'54"E	5.87'
L26	S29°34'53"E	34.38'
L27	S35°02'36"E	16.87'
L28	S54°15'30"E	17.84'
L29	S77°59'05"E	14.15'
L30	S38°57'18"E	15.20'
L31	S30°25'20"E	32.23'

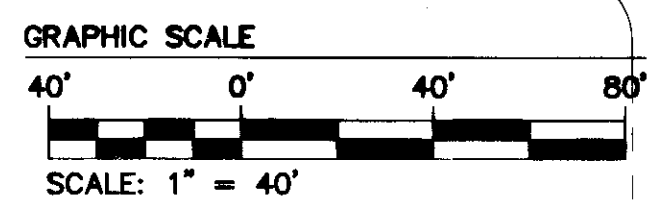
**NATURAL OPEN SPACE LINE TABLE**

LINE	BEARING	LENGTH
L32	S43°54'27"E	69.97'
L33	S40°18'23"E	64.75'
L34	N56°29'47"E	37.82'
L35	N34°54'39"E	26.98'
L36	N78°54'51"E	24.86'
L37	S43°29'45"E	36.75'
L38	S29°02'40"E	28.62'
L39	S43°02'27"E	40.93'
L40	S3°24'22"W	6.93'
L41	S49°51'53"W	8.48'
L42	S34°23'07"W	35.54'
L43	S59°31'10"W	26.64'
L44	S37°34'56"W	28.44'

NOTE:  
(CA-5) COMMON AREA #5  
(SEE SHEET 3)

NOTE:  
SEE SHEET 3 FOR GREENWAY  
TRAIL EASEMENT

NOTE:  
THIS RIGHT-OF-WAY IS PLATTED WITH THE  
INTENT OF BEING EXTENDED AND CONTINUED  
IN ORDER TO PROVIDE INGRESS AND EGRESS  
TO AND FROM FUTURE SUBDIVISION IN PHASE  
II AND PHASE III OF THIS DEVELOPMENT.

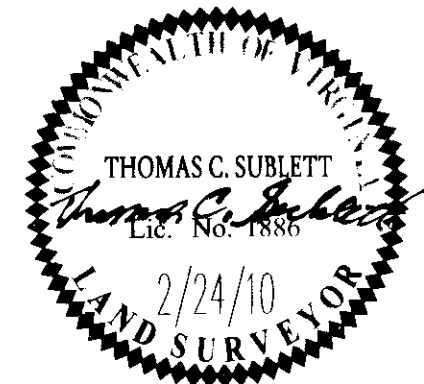


3. Large/Small Plat(s) Recorded  
Instrument # 100013938

STATE OF VIRGINIA  
CITY OF WILLIAMSBURG & COUNTY OF JAMES CITY CIRCUIT COURT.  
THIS 7 DAY OF July 2012  
THE PLAT SHOWN HEREON WAS PRESENTED AND ADMITTED TO  
THE RECORD AS THE LAW DIRECTS. 01:29 AM/PM  
INSTRUMENT # 100013938.

TESTE: *Betsy B. Woolridge*  
BETSY B. WOOLRIDGE, CLERK  
By *Claudia N. Binkley, App. Clerk*

Rev.	Date	Description	Revised By
1	4/27/10	REVISED PER COUNTY COMMENTS	JFS



**AES**  
CONSULTING ENGINEERS  
Hampton Roads | Central Virginia | Middle Peninsula

5248 Olde Towne Road, Suite 1  
Williamsburg, Virginia 23188  
Phone: (757) 253-0040  
Fax: (757) 220-8994  
www.aesva.com

**PLAT OF SUBDIVISION**  
**THE SETTLEMENT AT POWHATAN CREEK**  
**PHASE II**  
**LOTS 123-128 AND 153-155**

BERKELEY DISTRICT      JAMES CITY COUNTY      VIRGINIA

Project Contacts: TRS/RDM  
Project Number: 9254-08  
Scale: 1"=40'      Date: 02/23/10  
Sheet Number  
**2 of 3**