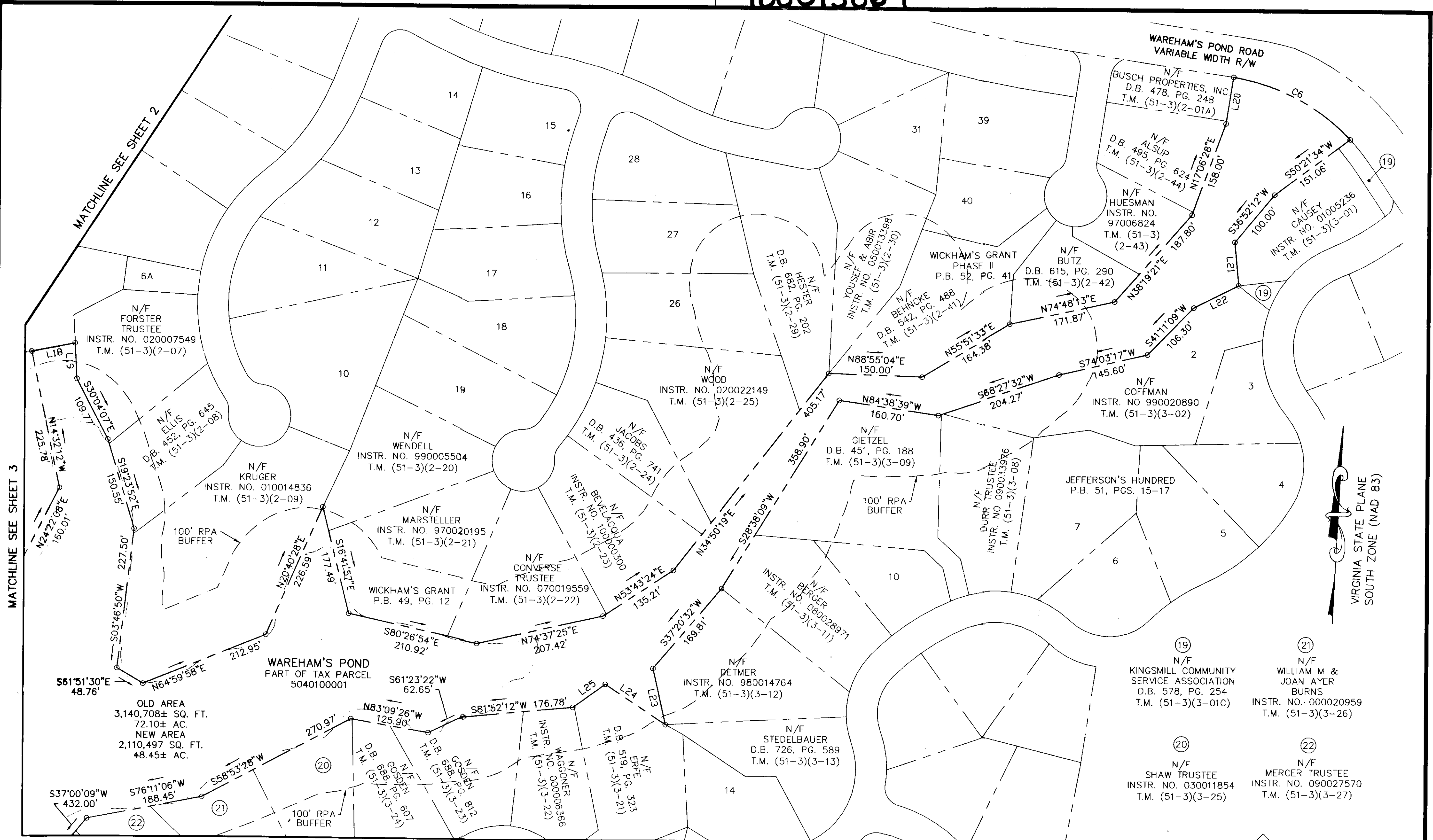


100013867



MATCHLINE SEE SHEET 3

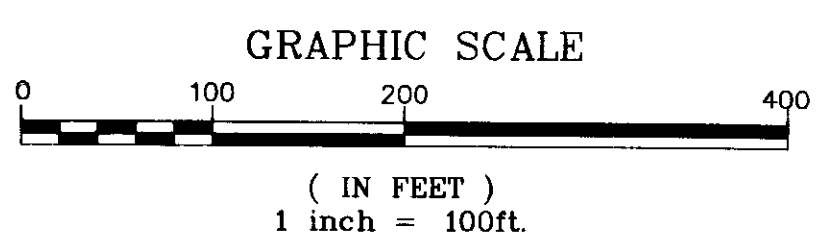
MATCHLINE SEE SHEET 2

MATCHLINE SEE SHEET 6

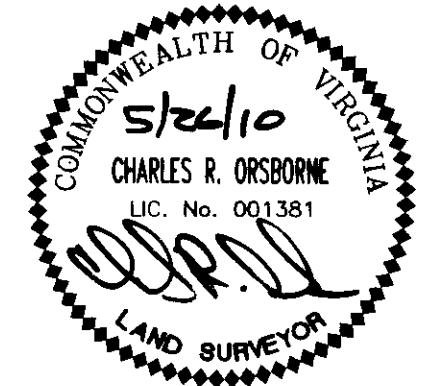
VIRGINIA STATE PLANE  
SOUTH ZONE (NAD 83)

PLAT SHOWING  
 PARCEL R-1, PARCEL R-10, AND  
 WAREHAM'S POND  
 BEING A SUBDIVISION OF  
 TAX PARCEL 504100001  
 PROPERTY OF  
**BUSCH PROPERTIES, INC.**  
 ROBERTS DISTRICT, JAMES CITY COUNTY, VIRGINIA  
 DATE: 4/08/10 SCALE: 1"=100'  
 REVISED 5/26/10  
 SHEET 5 OF 6

6 Large/Small Plat(s) Recorded  
 with as # 100013867



City of Williamsburg & County of James City  
 Circuit Court: This PLAT was recorded on  
 at 3:58 AM/PM, PG. 1 - PG. 1  
 DOCUMENT # 100013867  
 BETSY B. WOOLRIDGE, CLERK  
*Betsy B. Woolridge* Clerk



One Columbus Center  
 Suite 1100  
 Virginia Beach, VA 23462  
 Tel: (757) 473-2000  
 Fax: (757) 497-7933  
 Email: lmdg@landmarkdg.com