

AREA 4
 GOLF HOLES 11, 12, 13 & 14
 COLONIAL HERITAGE GOLF COURSE
 N/F
 COLONIAL HERITAGE HOMEOWNER'S ASSOCIATION, INC.
 C/O THE COLONIAL HERITAGE CLUB
 TAX MAP # (23-3)(5-4)
 INSTR. #080011371

COS #1
 8,559 S.F.
 0.20 AC.

PHASE III, SECTION 3A
 SP #0005-2009

SEE SHEET 6 FOR BOUNDARY
 LINE AND CURVE DATA

EXISTING
 PHASE II SECTION 2
 JCC #S-073-03
 (INSTR. #060006523)

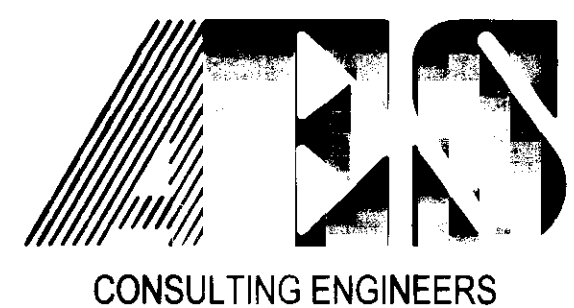
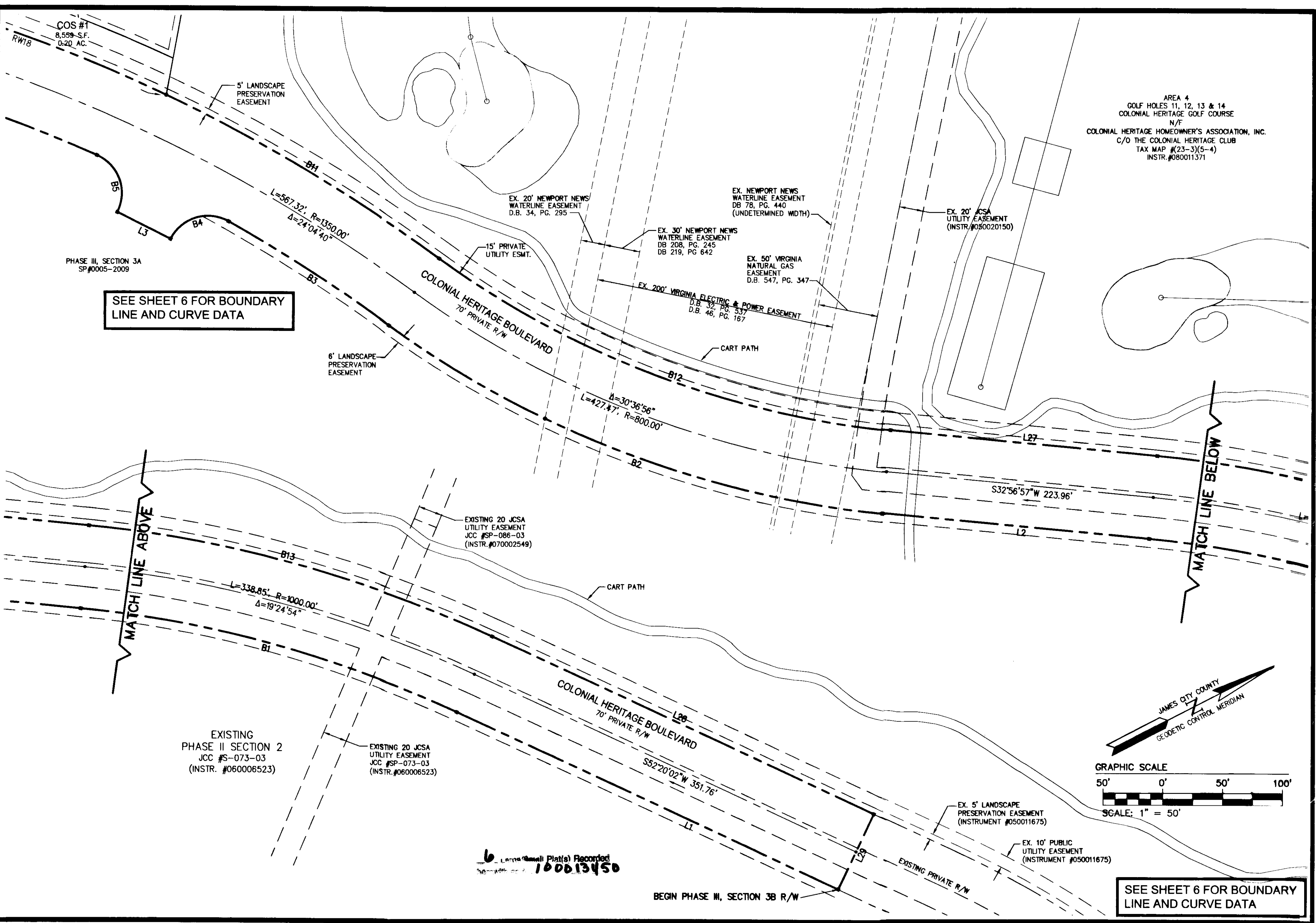
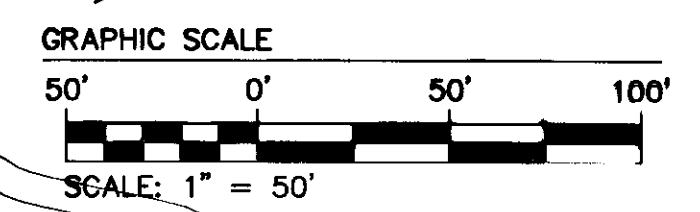
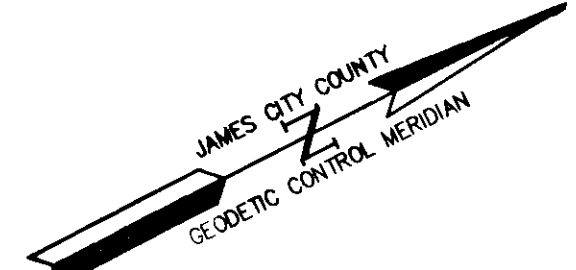
EXISTING 20 JCSA
 UTILITY EASEMENT
 JCC #SP-073-03
 (INSTR. #060006523)

6-1-10 (Small Plat) Recorded
 100013450

BEGIN PHASE III, SECTION 3B R/W

SEE SHEET 6 FOR BOUNDARY
 LINE AND CURVE DATA

100013450

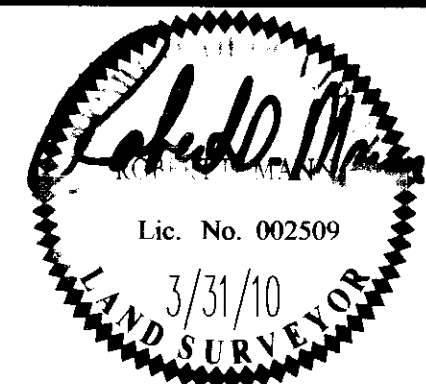


5248 Olde Towne Road, Suite 1
 Williamsburg, Virginia 23188
 (757) 253-0040
 Fax (757) 220-8994

WILLIAMSBURG • RICHMOND • GLOUCESTER • FREDERICKSBURG

PLAT OF SUBDIVISION
COLONIAL HERITAGE
 PHASE III, SECTION 3B
 LOTS 1-46
 PREPARED FOR COLONIAL HERITAGE LLC

STONEHOUSE DISTRICT JAMES CITY COUNTY VIRGINIA



No.	DATE	REVISION / COMMENT / NOTE	BY

City of Williamsburg & County of James City
 Circuit Court: This PLAT was recorded on
 30 June 2010
 at 9:31 AM/PM, PG.
 DOCUMENT # 100013450
 BETSY B. WOOLRIDGE, CLERK
 Betsy B. Woolridge Clerk

Designed HWP	Drawn AWT/RMS
Scale 1"=50'	Date 3/31/10
Project No. 8881-33B	
Drawing No. 5 of 6	