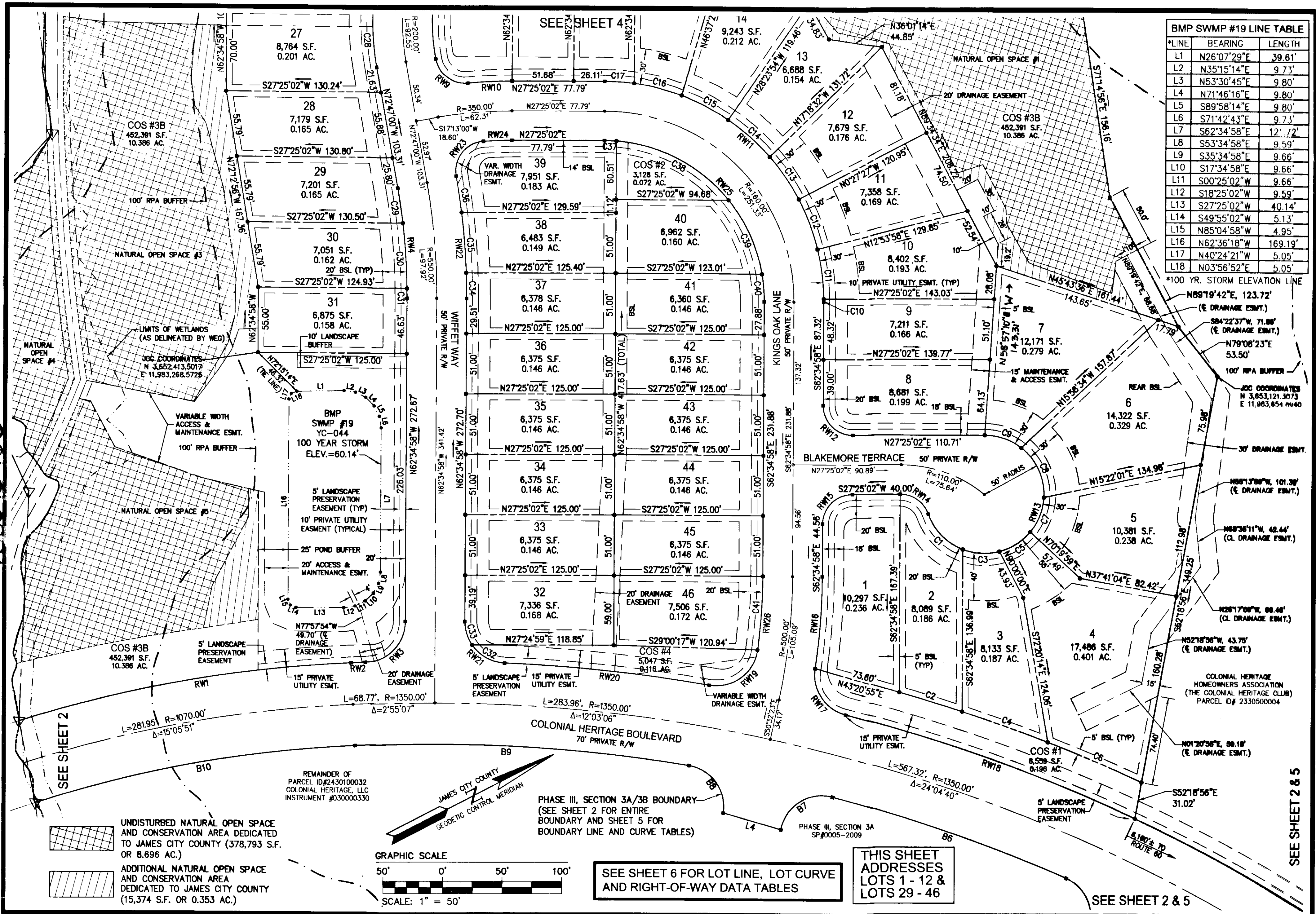


100013450

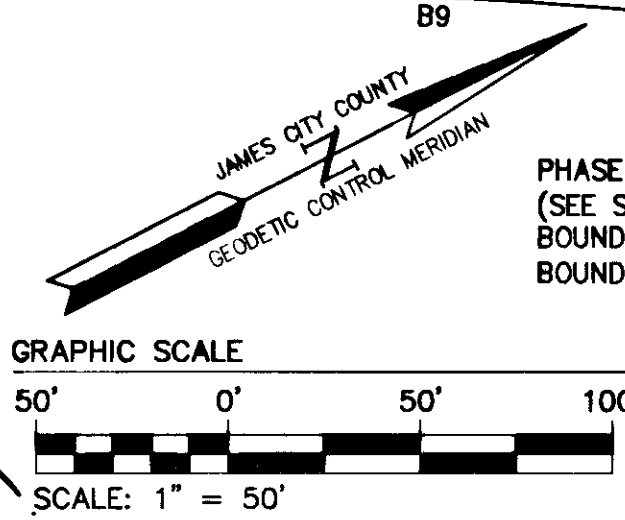


**BMP SWMP #19 LINE TABLE**

LINE	BEARING	LENGTH
L1	N26°07'29"E	39.61'
L2	N35°15'14"E	9.73'
L3	N53°30'45"E	9.80'
L4	N71°46'16"E	9.80'
L5	S89°58'14"E	9.80'
L6	S71°42'43"E	9.73'
L7	S62°34'58"E	121.72'
L8	S53°34'58"E	9.59'
L9	S35°34'58"E	9.66'
L10	S17°34'58"E	9.66'
L11	S00°25'02"W	9.66'
L12	S18°25'02"W	9.59'
L13	S27°25'02"W	40.14'
L14	S49°55'02"W	5.13'
L15	N85°04'58"W	4.95'
L16	N62°36'18"W	169.19'
L17	N40°24'21"W	5.05'
L18	N03°56'52"E	5.05'

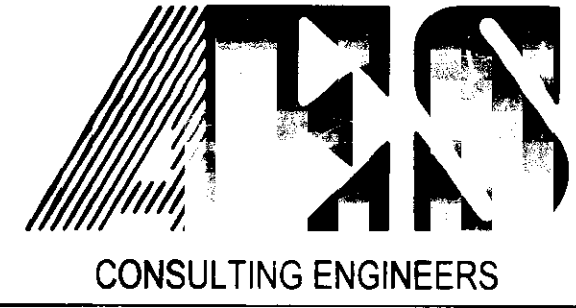
\*100 YR. STORM ELEVATION LINE  
 N09°19'42"E, 123.72'  
 (E DRAINAGE ESMT.)  
 S84°22'37"W, 71.88'  
 (E DRAINAGE ESMT.)  
 N79°08'23"E, 53.50'  
 100' RPA BUFFER  
 JOC COORDINATES  
 N 3,853,121.3073  
 E 11,983,854.8940  
 N55°13'08"W, 101.30'  
 (E DRAINAGE ESMT.)  
 N68°36'11"W, 42.44'  
 (CL DRAINAGE ESMT.)  
 N26°17'08"W, 88.46'  
 (CL DRAINAGE ESMT.)  
 N52°18'56"E, 43.75'  
 (E DRAINAGE ESMT.)  
 COLONIAL HERITAGE HOMEOWNERS ASSOCIATION (THE COLONIAL HERITAGE CLUB) PARCEL ID# 2330500004  
 N01°20'56"E, 88.18'  
 (E DRAINAGE ESMT.)  
 S52°18'56"E, 31.02'

UNDISTURBED NATURAL OPEN SPACE AND CONSERVATION AREA DEDICATED TO JAMES CITY COUNTY (378,793 S.F. OR 8.696 AC.)  
 ADDITIONAL NATURAL OPEN SPACE AND CONSERVATION AREA DEDICATED TO JAMES CITY COUNTY (15,374 S.F. OR 0.353 AC.)



SEE SHEET 6 FOR LOT LINE, LOT CURVE AND RIGHT-OF-WAY DATA TABLES

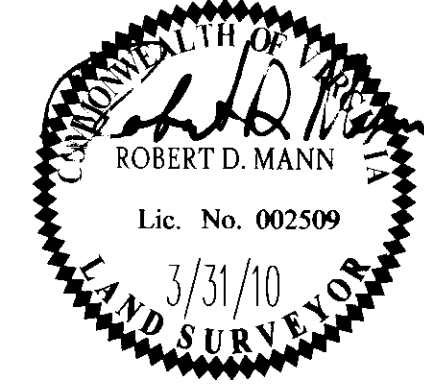
THIS SHEET ADDRESSES LOTS 1 - 12 & LOTS 29 - 46



5248 Olde Towne Road, Suite 1  
 Williamsburg, Virginia 23188  
 (757) 253-0040  
 Fax (757) 220-8994

**PLAT OF SUBDIVISION  
 COLONIAL HERITAGE  
 PHASE III, SECTION 3B  
 LOTS 1-46  
 PREPARED FOR COLONIAL HERITAGE LLC**

STONEHOUSE DISTRICT JAMES CITY COUNTY VIRGINIA



No.	DATE	REVISION / COMMENT / NOTE	BY

Designed HWP	Drawn AWT/RMS
Scale 1"=50'	Date 3/31/10
Project No. 8881-33B	
Drawing No. 3 of 6	

WILLIAMSBURG • RICHMOND • GLOUCESTER • FREDERICKSBURG