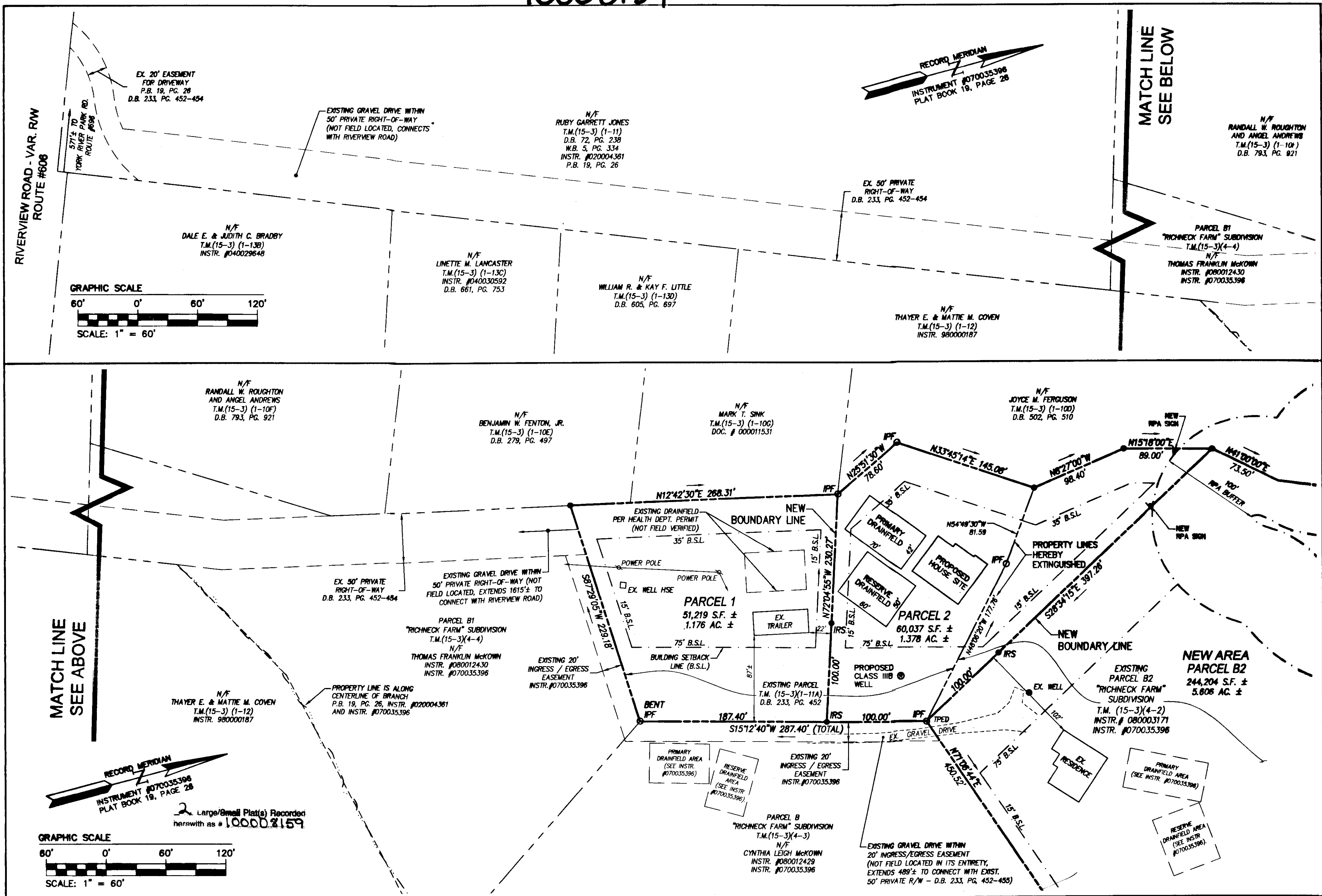


10008159



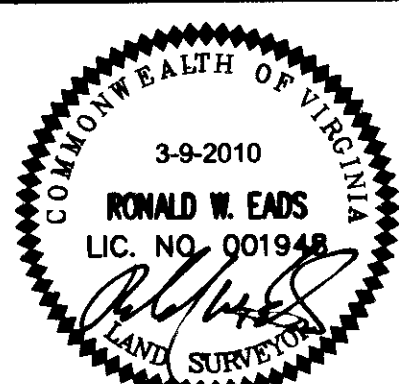
RECORD MERIDIAN
INSTRUMENT #070035396
PLAT BOOK 19, PAGE 28

2 Large/Small Plat(s) Recorded
herewith as # 10008159

GRAPHIC SCALE
60' 0' 60' 120'
SCALE: 1" = 60'

City of Williamsburg & County of James City
Circuit Court: This PLAT was recorded on
4-28-2010
at 2:14 PM, P.B. PG. _____
DOCUMENT # 10008159
BETSY B. WOOLRIDGE, CLERK
Betsy B. Woolridge Clerk

Rev.	Date	Description	Revised By
1	3-9-2010	REVISED PLAT SUBMITTED TO CITY ENGINEERING DEPARTMENT ON FEBRUARY 29, 2010	CMA



AES
CONSULTING ENGINEERS
Hampton Roads | Central Virginia | Middle Peninsula

5248 Old Towne Road, Suite 1
Williamsburg, Virginia 23188
Phone: (757) 253-0040
Fax: (757) 220-8994
www.aesva.com

**BOUNDARY LINE ADJUSTMENT AND
FAMILY SUBDIVISION
TAX MAP PARCEL (15-3)(1-11A) AND PARCEL B2
"RICHNECK FARM" SUBDIVISION**

STONEHOUSE DISTRICT JAMES CITY COUNTY VIRGINIA

Project Contacts: AEB
Project Number: 9143-04
Scale: 1"=60'
Date: 01-18-2010
Sheet Number
2 OF 2

S:\job\914304-McKown Family Subd\SURVEY\Plans\914304-p02-plat.dwg, 3/29/2010 10:12:39 AM, mla.apparent