

100007186

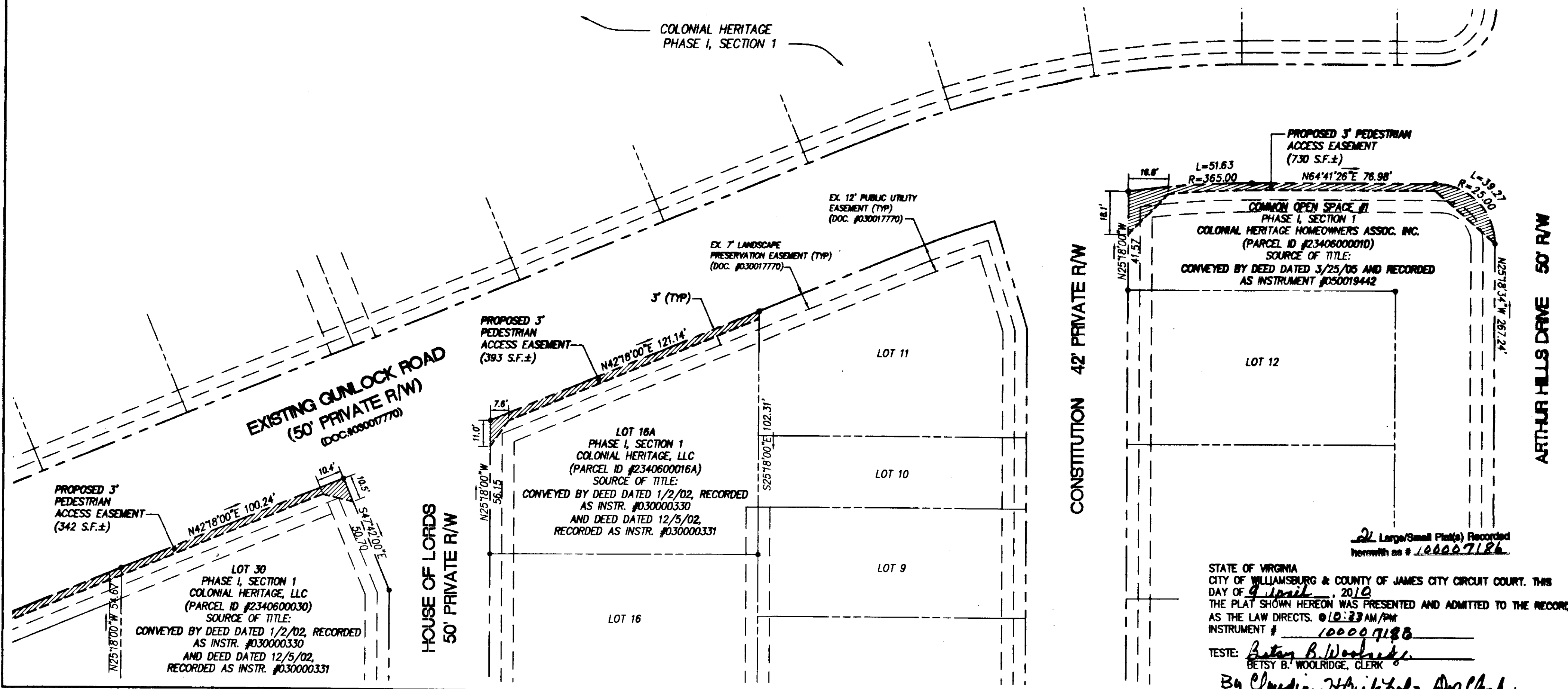
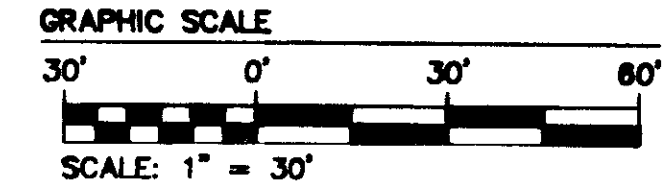
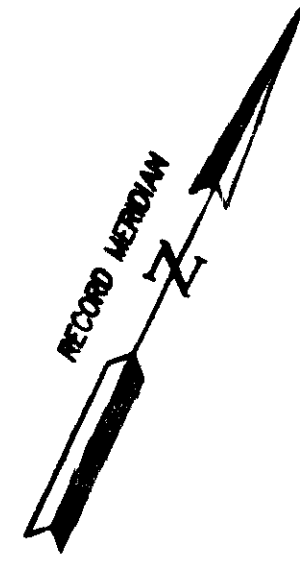
REFERENCES:

PHASE I, SECTION 1:

PLAT BOOK 90, PG 57-61
 INSTRUMENT # 030017770
 INSTRUMENT #100001575

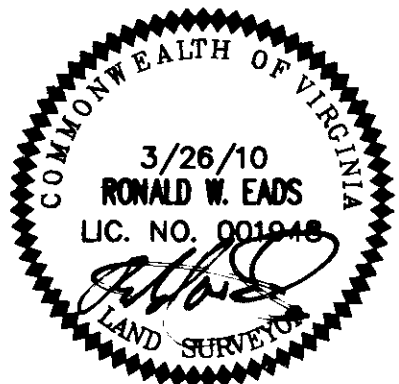
PHASE I, SECTION 5:

INSTRUMENT # 080008711
 INSTRUMENT #100002286



STATE OF VIRGINIA
 CITY OF WILLIAMSBURG & COUNTY OF JAMES CITY CIRCUIT COURT. THIS
 DAY OF 9 April, 2010
 THE PLAT SHOWN HEREON WAS PRESENTED AND ADMITTED TO THE RECORD
 AS THE LAW DIRECTS. @ 10:23 AM/PM
 INSTRUMENT # 100007186
 TESTE: Betsy B. Woolridge
 BETSY B. WOOLRIDGE, CLERK
By Claudia H. Hinkley, Asst. Clerk

Rev.	Date	Description	Revised By

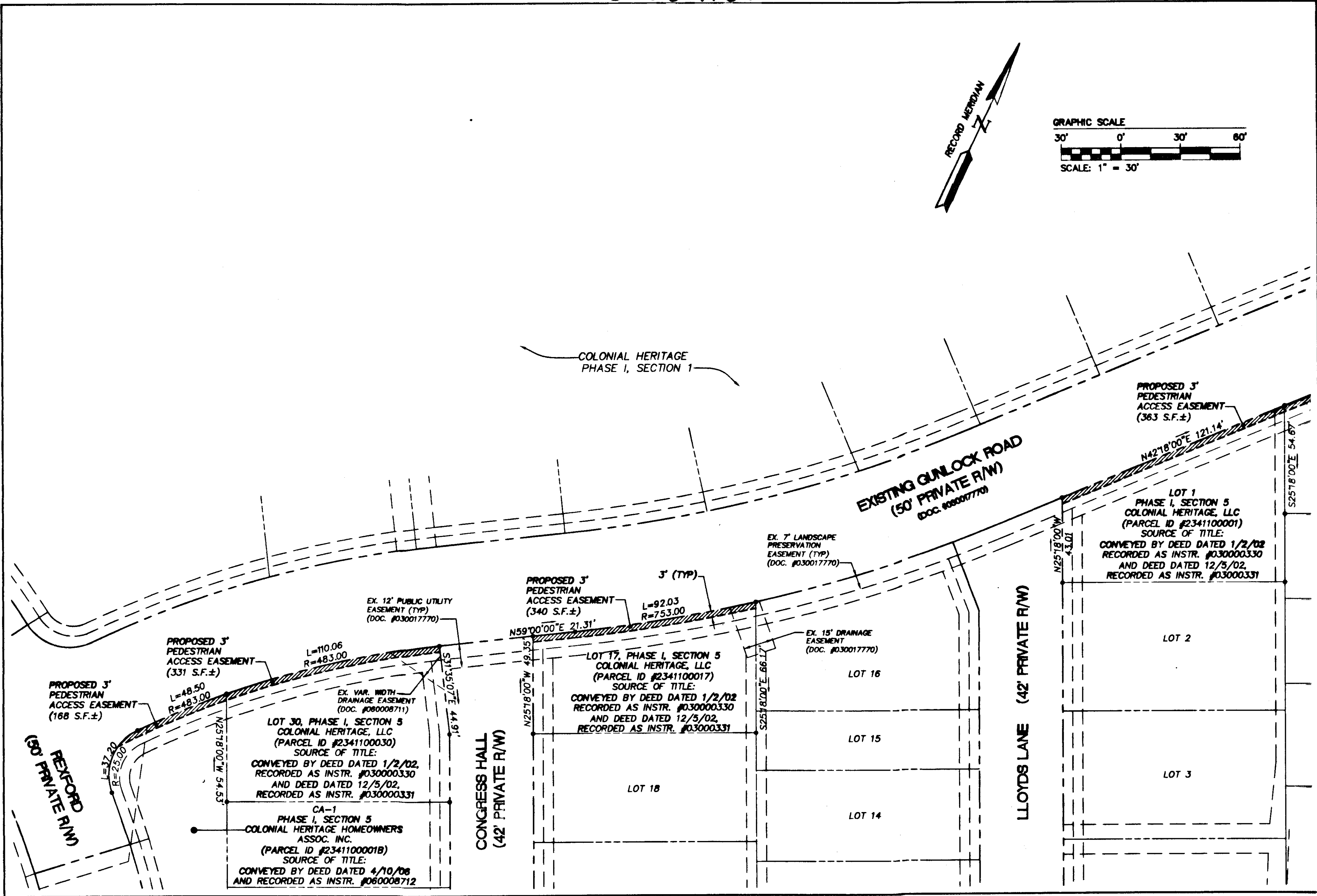
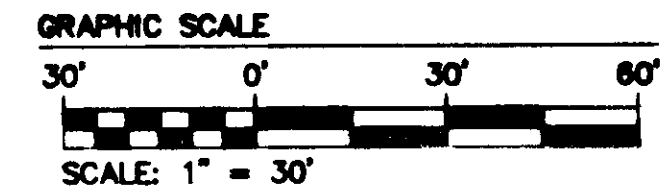
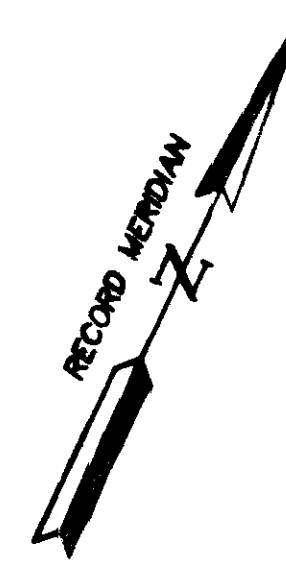


AES
 CONSULTING ENGINEERS
 Hampton Roads | Central Virginia | Middle Peninsula
 5248 Old Towne Road, Suite 1
 Williamsburg, Virginia 23188
 Phone: (757) 253-0040
 Fax: (757) 220-8994
 www.aesva.com

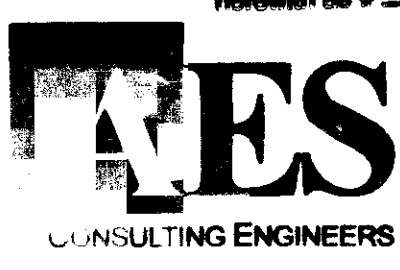
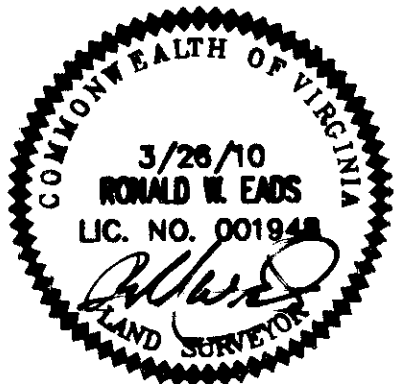
PLAT SHOWING PROPOSED 3' PEDESTRIAN
 ACCESS EASEMENT
 PHASE I, SECTION 1 & PHASE I, SECTION 5
 "COLONIAL HERITAGE"
 OWNED BY: COLONIAL HERITAGE, LLC AND
 COLONIAL HERITAGE HOMEOWNERS ASSOCIATION, INC.
 STONEHOUSE DISTRICT JAMES CITY COUNTY VIRGINIA

Project Contacts: RWEE	
Project Number: 8881-18-P01	Date: 03/28/10
Scale: 1"=30'	Sheet Number: 1 of 2

100007186



City of Williamsburg & County of James City Circuit Court. This PLAT was recorded on <i>9 April 2010</i> at <i>12:33</i> AM/PM PB PG DOCUMENT # <i>100007186</i> BETSY B. WOOLRIDGE, CLERK <i>Betsy B. Woolridge</i> Clerk	Reviewed By
Rev.	Date



5348 Old Towne Road, Suite 1
Williamsburg, Virginia 23188
Phone: (757) 253-0040
Fax: (757) 220-8994
www.wesve.com

Hampton Roads | Central Virginia | Middle Peninsula

PLAT SHOWING PROPOSED 3' PEDESTRIAN ACCESS EASEMENT
PHASE I, SECTION 1 & PHASE I, SECTION 5
"COLONIAL HERITAGE"
OWNED BY: COLONIAL HERITAGE, LLC AND
COLONIAL HERITAGE HOMEOWNERS ASSOCIATION, INC.
STONEHOUSE DISTRICT JAMES CITY COUNTY VIRGINIA

Project Contacts:	RWE
Project Number:	8881-18-P02
Scale:	1"=30'
Date:	03/28/10
Sheet Number	2 of 2