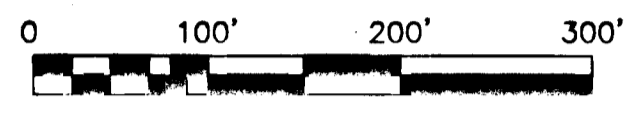


100006479

PLAT SHOWING BOUNDARY LINE ADJUSTMENT AND CONSERVATION EASEMENT AREA ADJUSTMENT LOCATED IN FENWICK HILLS SUBDIVISION STONEHOUSE DISTRICT

JAMES CITY COUNTY VIRGINIA DATE: 12/21/09 JOB# 06-259 SCALE 1"=200' SHEET 4 OF 5

LandTech Resources, Inc. Surveying Engineering GPS 205-E Bulfante Blvd., Williamsburg, VA 23188 Phone: (757) 565-1677 Fax: (757) 565-0782 web: landtechresources.com



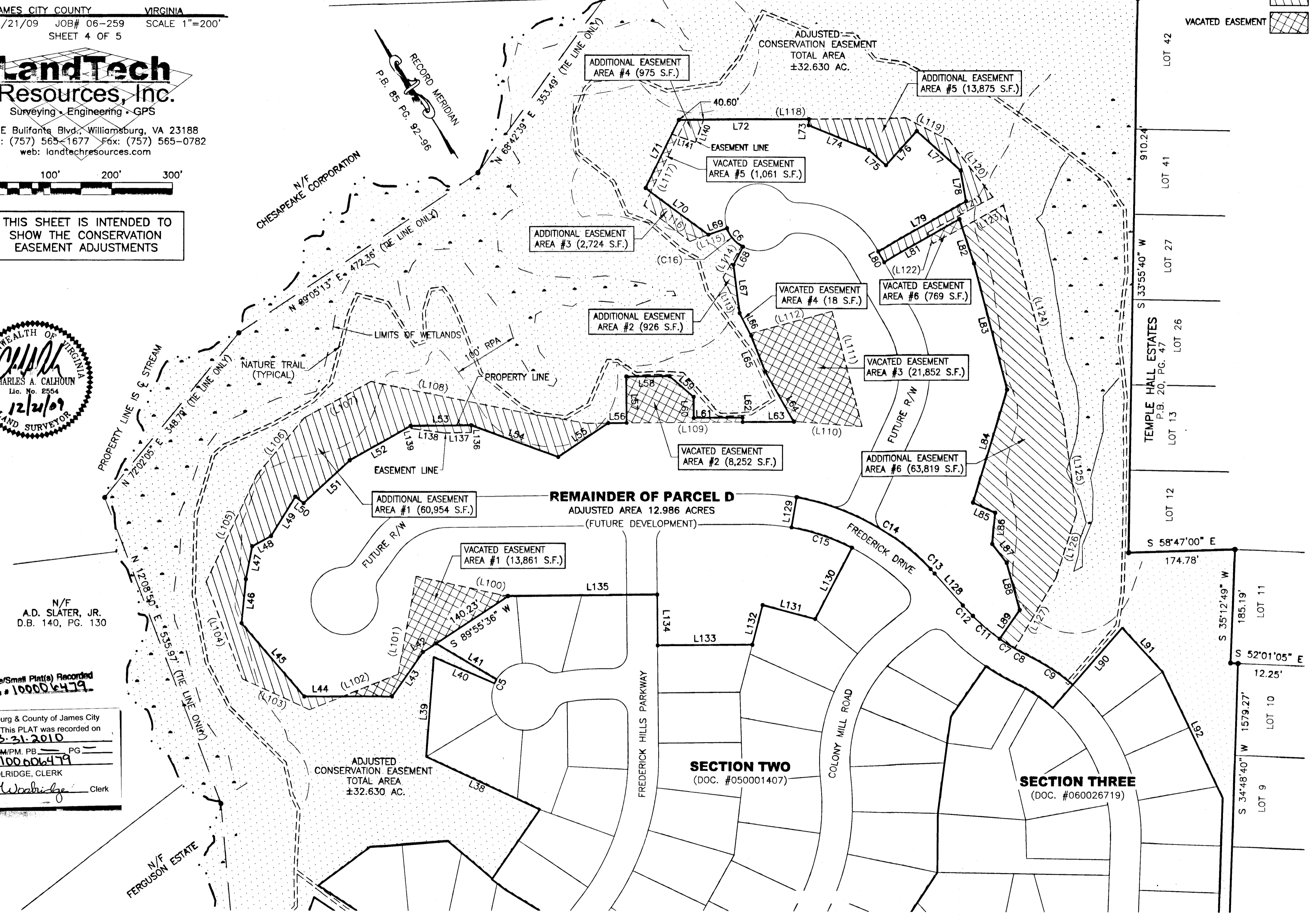
THIS SHEET IS INTENDED TO SHOW THE CONSERVATION EASEMENT ADJUSTMENTS



LEGEND

- EX. CONSERVATION EASEMENT (stippled pattern)
ADDITIONAL EASEMENT (diagonal lines)
VACATED EASEMENT (cross-hatched pattern)

INTERSTATE 64 (E.B.L.) C10



N/F A.D. SLATER, JR. D.B. 140, PG. 130

5 Large/Small Plat(s) Recorded herewith as # 100006479

City of Williamsburg & County of James City Circuit Court: This PLAT was recorded on 3-31-2010 at 1:21 PM, PG. DOCUMENT # 100006479 BETSY B. WOOLRIDGE, CLERK

N/F FERGUSON ESTATE

- LOT 42
LOT 41
LOT 27
LOT 26
LOT 13
LOT 12
LOT 11
LOT 10
LOT 9