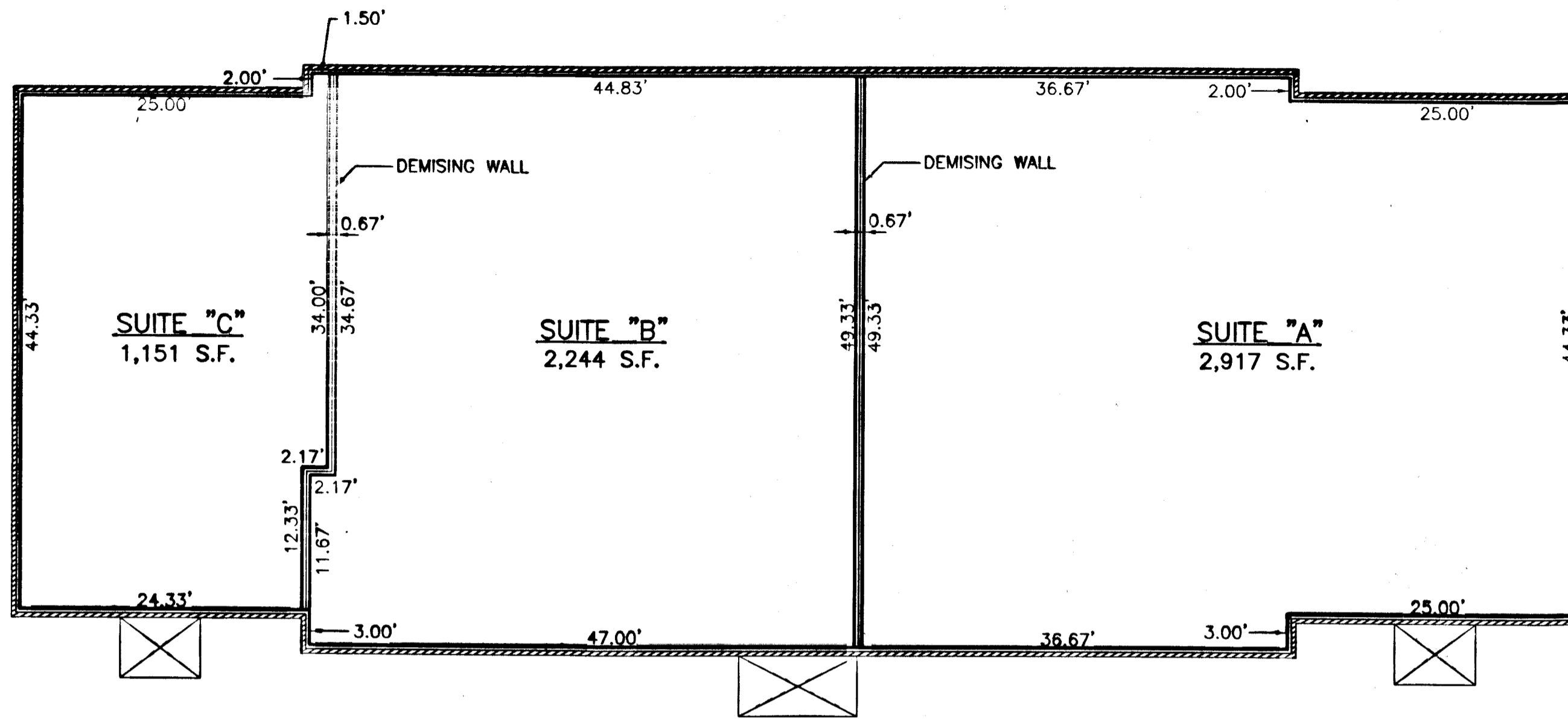
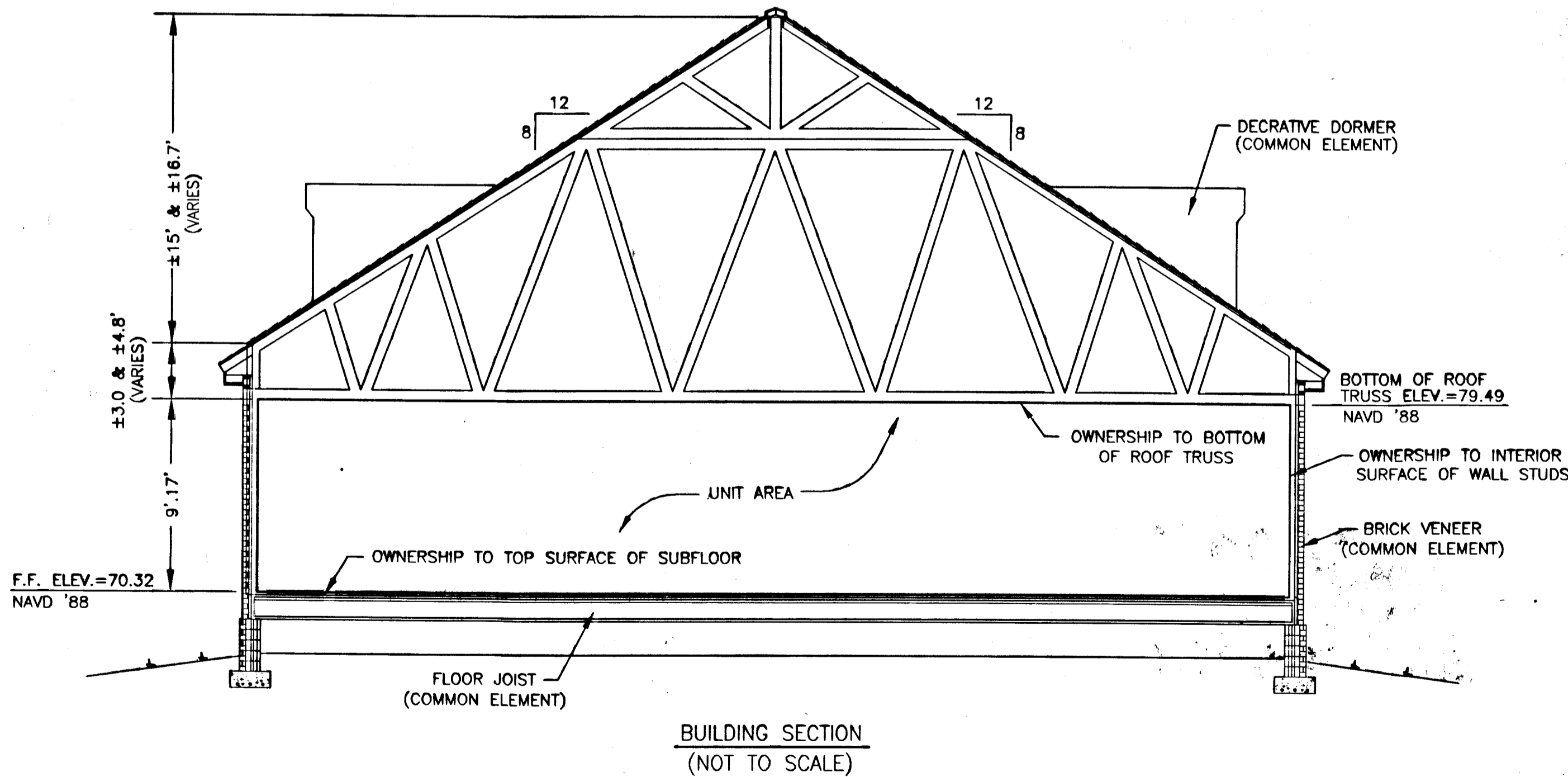


090935



BUILDING #1 FOOTPRINT (DIMENSIONS TO INTERIOR SURFACE OF WALL STUDS)  
1"=10'



BUILDING SECTION  
(NOT TO SCALE)

2 Large Plat(s) Recorded  
Herewith as # 090935

City of Williamsburg & County of James City  
Circuit Court: This PLAT was recorded on  
4-22-2009  
at 3:09 PM, PG  
DOCUMENT # 090935  
BETSY B. WOOLRIDGE, CLERK  
*Betsy Woolridge* Clerk

NOTES:

1. THIS PLAN IS INTENDED TO PROVIDE SUPPLEMENTAL INFORMATION FOR UPPER AND LOWER HORIZONTAL BOUNDARIES TO THE EXISTING PLAN(S) RECORDED.
2. VERTICAL BOUNDARIES SHOWN ARE DIMENSIONED TO THE INTERIOR SURFACE OF THE STUD AND WERE TAKEN FROM ARCHITECTURAL PLANS PROVIDED BY THE DEVELOPER. REFER TO CORRECTIVE SUPPLEMENTAL DECLARATION FOR A MORE DETAILED DESCRIPTION OF OWNERSHIP BOUNDARIES.

I CERTIFY THAT THIS PLAN IS ACCURATE AND COMPLIES WITH THE PROVISIONS OF SECTION 55-79.58(b) OF THE CODE OF VIRGINIA 1950 AS AMENDED AND THAT UNITS SHOWN HEREON HAVE BEEN SUBSTANTIALLY COMPLETED.

*Charles A. Calhoun*  
CHARLES A. CALHOUN

8/25/08  
DATE

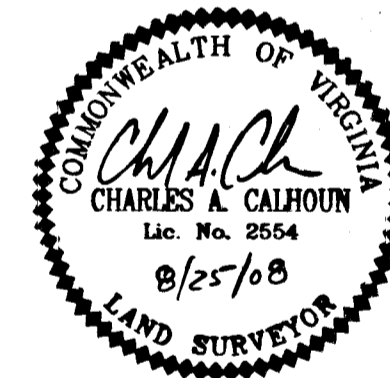


EXHIBIT #1  
PLAN OF  
BUILDING #1  
ALEXANDER COMMONS

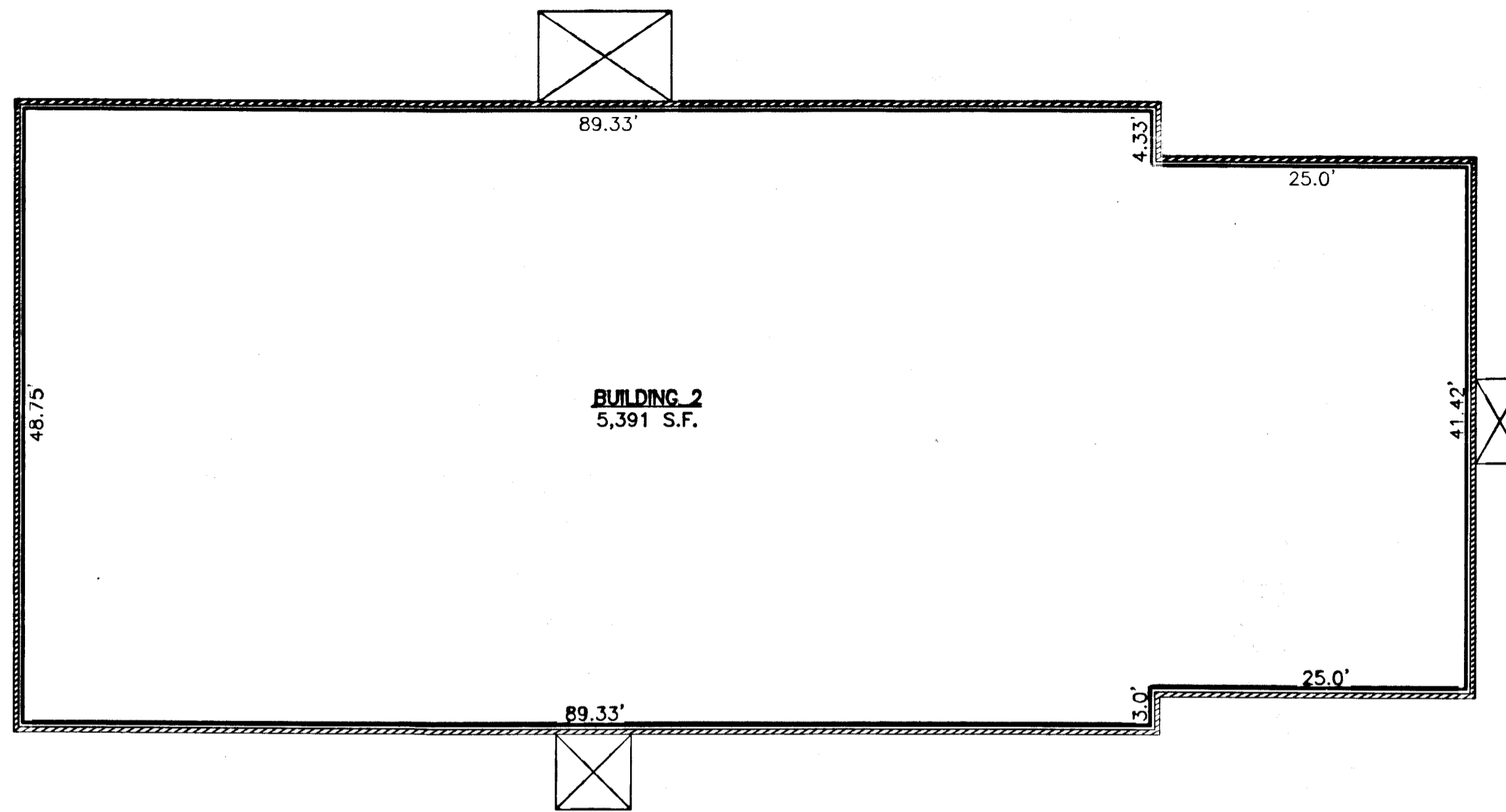
CITY OF WILLIAMSBURG, VIRGINIA

DATE: 08/25/08 SCALE: AS SHOWN JOB# 05-320

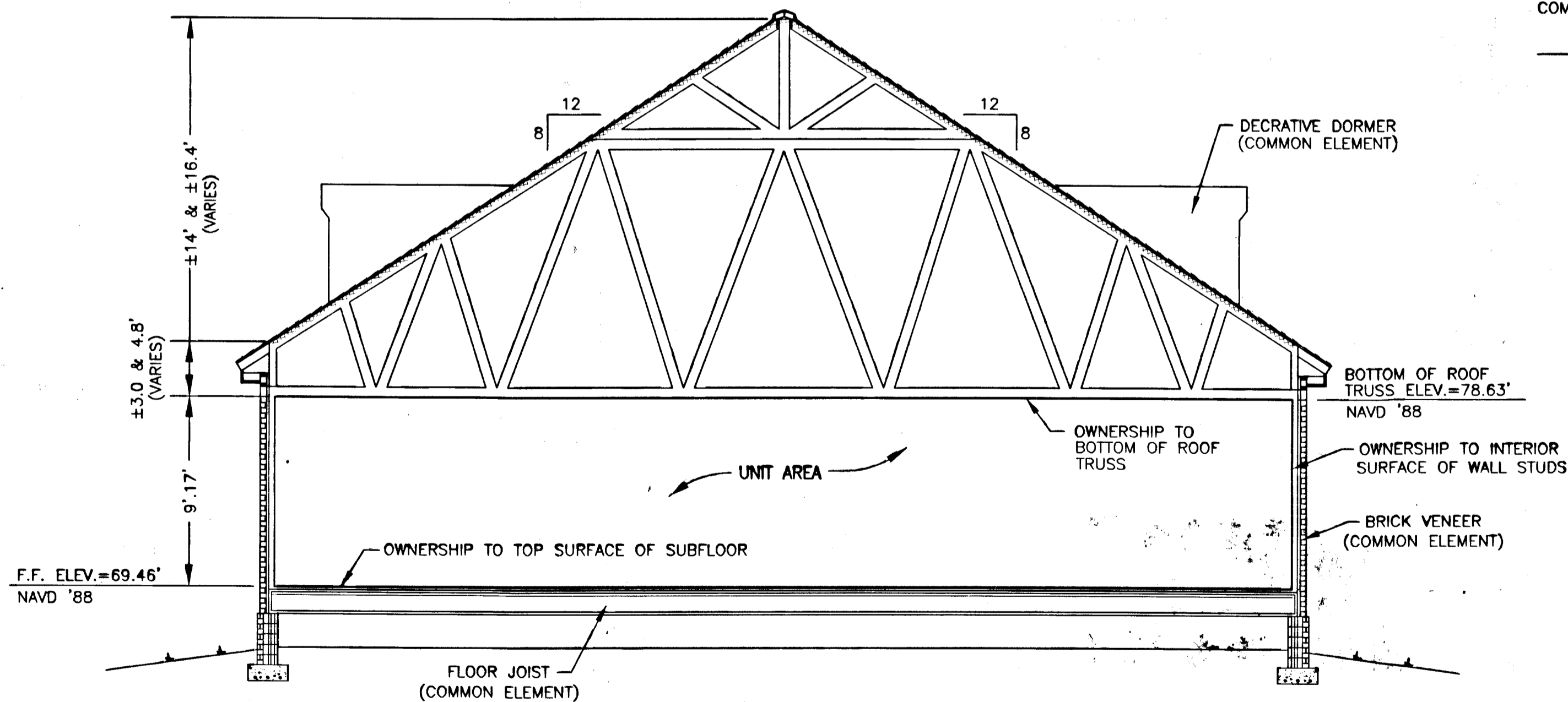
**LandTech**  
Resources, Inc.  
Surveying • Engineering • GPS

205-E Bulifants Blvd., Williamsburg, VA 23188  
Phone: (757) 565-1677 Fax: (757) 565-0782  
web: landtechresources.com

090935



BUILDING FOOTPRINT (DIMENSIONS TO INTERIOR SURFACE OF WALL STUDS)  
1"=10'



BUILDING SECTION  
(NOT TO SCALE)

2 Large/Small Plat(s) Recorded  
herewith as # 090935

City of Williamsburg & County of James City  
Circuit Court: This PLAT was recorded on  
4-22-2009  
at 3:09 PM, PG 1  
DOCUMENT # 090935  
BETSY B. WOOLRIDGE, CLERK  
*Betsy B. Woolridge* Clerk

NOTES:

1. THIS PLAN IS INTENDED TO PROVIDE SUPPLEMENTAL INFORMATION FOR UPPER AND LOWER HORIZONTAL BOUNDARIES TO THE EXISTING PLAN(S) RECORDED.
2. VERTICAL BOUNDARIES SHOWN ARE DIMENSIONED TO THE INTERIOR SURFACE OF THE STUD AND WERE TAKEN FROM ARCHITECTURAL PLANS PROVIDED BY THE DEVELOPER. REFER TO CORRECTIVE SUPPLEMENTAL DECLARATION FOR A MORE DETAILED DESCRIPTION OF OWNERSHIP BOUNDARIES.

I CERTIFY THAT THIS PLAN IS ACCURATE AND COMPLIES WITH THE PROVISIONS OF SECTION 55-79.58(b) OF THE CODE OF VIRGINIA 1950 AS AMENDED AND THAT UNITS SHOWN HEREON HAVE BEEN SUBSTANTIALLY COMPLETED.

*Chas. A. Calhoun*  
CHARLES A. CALHOUN

8/25/08  
DATE

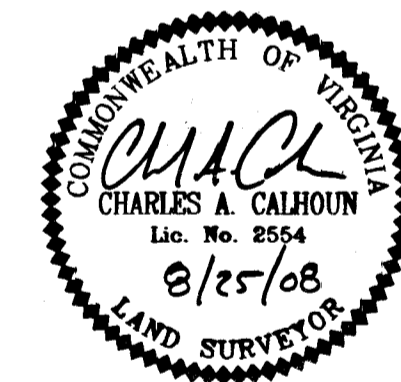
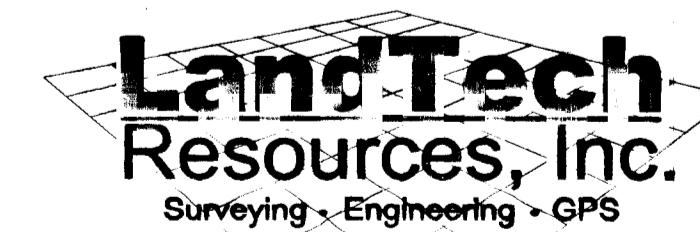


EXHIBIT A-2  
PLAN OF  
BUILDING #2  
ALEXANDER COMMONS

CITY OF WILLIAMSBURG, VIRGINIA

DATE: 8/25/08 SCALE: AS SHOWN JOB# 05-320



205-E Bulifants Blvd., Williamsburg, VA 23188  
Phone: (757) 565-1677 Fax: (757) 565-0782  
web: landtechresources.com