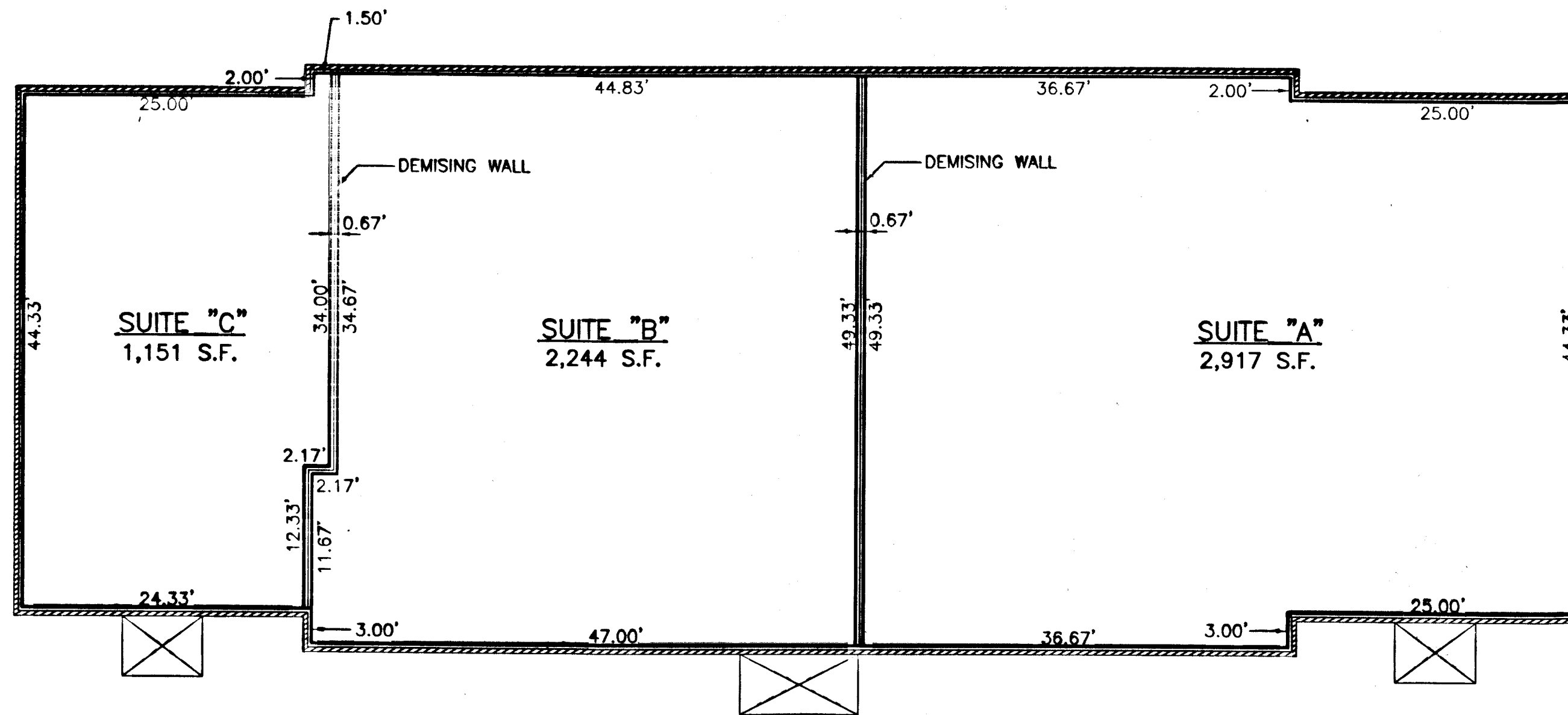
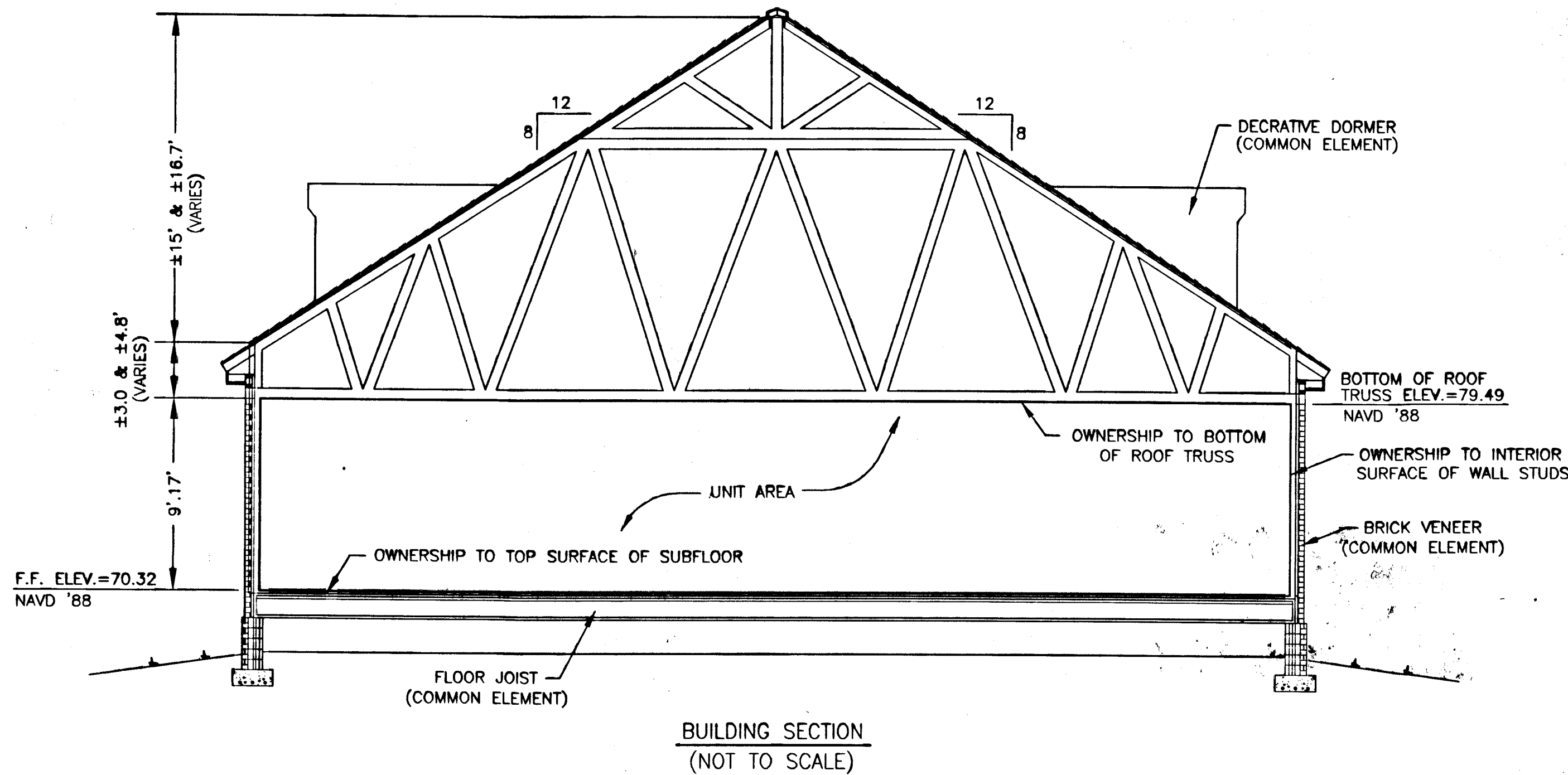


090935



BUILDING #1 FOOTPRINT (DIMENSIONS TO INTERIOR SURFACE OF WALL STUDS)
1"=10'



BUILDING SECTION
(NOT TO SCALE)

2 Large Plat(s) Recorded
Herewith as # 090935

City of Williamsburg & County of James City
Circuit Court: This PLAT was recorded on
4-22-2009
at 3:09 PM, PG
DOCUMENT # 090935
BETSY B. WOOLRIDGE, CLERK
Betsy Woolridge Clerk

NOTES:

1. THIS PLAN IS INTENDED TO PROVIDE SUPPLEMENTAL INFORMATION FOR UPPER AND LOWER HORIZONTAL BOUNDARIES TO THE EXISTING PLAN(S) RECORDED.
2. VERTICAL BOUNDARIES SHOWN ARE DIMENSIONED TO THE INTERIOR SURFACE OF THE STUD AND WERE TAKEN FROM ARCHITECTURAL PLANS PROVIDED BY THE DEVELOPER. REFER TO CORRECTIVE SUPPLEMENTAL DECLARATION FOR A MORE DETAILED DESCRIPTION OF OWNERSHIP BOUNDARIES.

I CERTIFY THAT THIS PLAN IS ACCURATE AND COMPLIES WITH THE PROVISIONS OF SECTION 55-79.58(b) OF THE CODE OF VIRGINIA 1950 AS AMENDED AND THAT UNITS SHOWN HEREON HAVE BEEN SUBSTANTIALLY COMPLETED.

Charles A. Calhoun
CHARLES A. CALHOUN

8/25/08
DATE

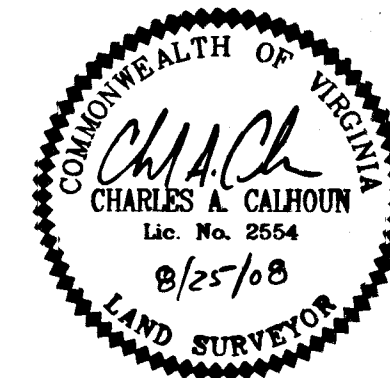
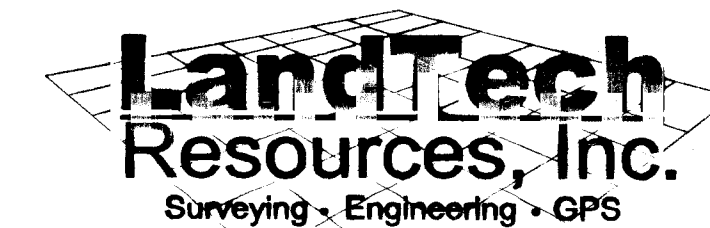


EXHIBIT #1
PLAN OF
BUILDING #1
ALEXANDER COMMONS

CITY OF WILLIAMSBURG, VIRGINIA

DATE: 08/25/08 SCALE: AS SHOWN JOB# 05-320



205-E Bulifants Blvd., Williamsburg, VA 23188
Phone: (757) 565-1677 Fax: (757) 565-0782
web: landtechresources.com