

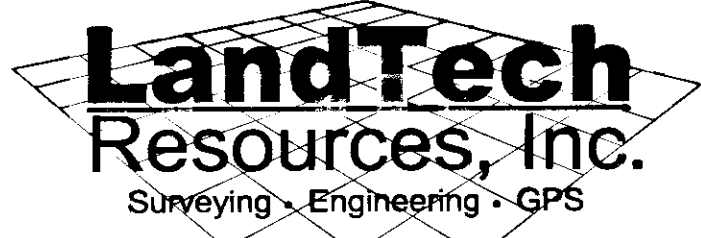
090030123

**PLAT SHOWING A CONSERVATION EASEMENT DEDICATED TO JAMES CITY COUNTY ON THE PROPERTY OF CHESTNUT GROVE DEVELOPMENT, LLC**  
 Located In The  
 Roberts Magisterial District  
 James City County, Virginia  
 DATE: 9/12/08 SCALE 1" = 60' JOB #07-313

- NOTES:
1. THIS PLAT WAS PRODUCED WITHOUT THE BENEFIT OF A TITLE REPORT.
  2. THIS PLAT IS BASED ON A PLAT RECORDED AT INSTRUMENT #070025331 AND A CURRENT FIELD SURVEY COMPLETE ON 8/28/07. IMPROVEMENTS & ENCROACHMENTS ON SAID PLAT ARE NOT SHOWN ON THIS EASEMENT PLAT.
  3. UNDERGROUND UTILITIES WERE NOT LOCATED.
  4. TOTAL CONSERVATION EASEMENT DEDICATION = 3.5554 AC.
  5. NATURAL OPEN SPACE EASEMENTS SHALL REMAIN IN A NATURAL UNDISTURBED STATE EXCEPT FOR THOSE ACTIVITIES REFERENCED IN THE DEED OF EASEMENT.

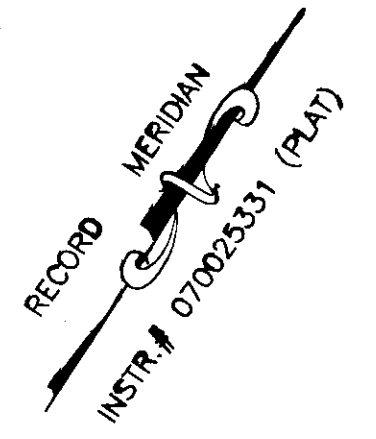
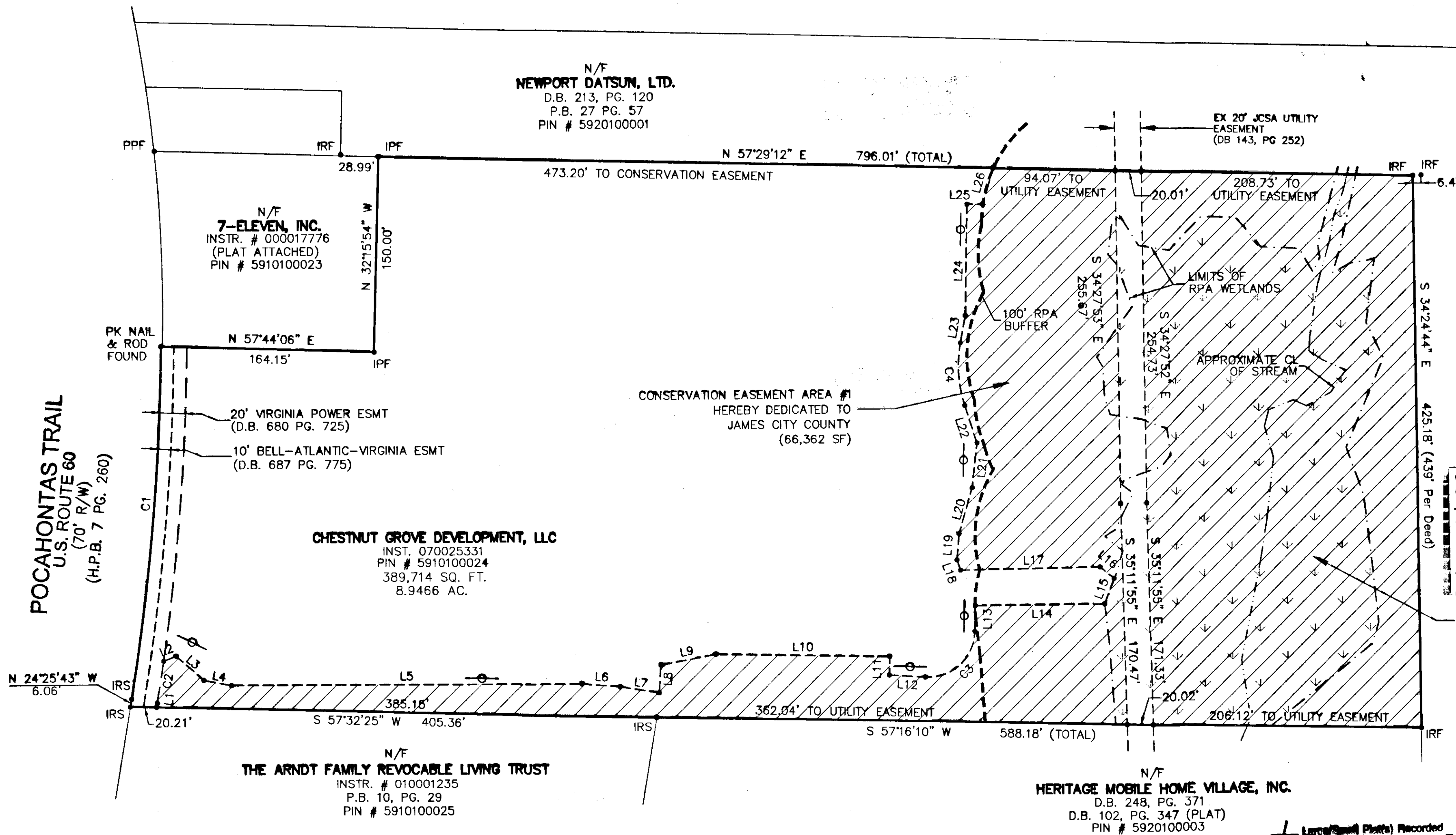
PROPERTY CURVE TABLE						
CURVE	DELTA-ANGLE	CHORD BEARING	TANGENT	RADIUS	ARC LENGTH	CHORD LENGTH
C1	8°40'46"	N 28°46'05" W	136.44'	1797.95'	272.36'	272.10'
C2	1°02'17"	N 24°56'51" E	16.47'	1817.95'	32.94'	32.94'
C3	92°19'34"	N 13°27'36" E	37.49'	36.00'	58.01'	51.93'
C4	27°57'49"	N 37°29'04" W	24.90'	100.00'	48.81'	48.32'

PROPERTY LINE TABLE		
LINE	BEARING	DISTANCE
L1	N 24°25'43" W	3.23'
L2	N 35°05'15" E	10.20'
L3	S 82°44'56" E	28.64'
L4	N 66°51'56" E	21.58'
L5	N 55°59'52" E	269.71'
L6	N 60°53'28" E	29.58'
L7	N 65°27'48" E	30.33'
L8	N 30°09'23" W	21.56'
L9	N 45°44'44" E	43.03'
L10	N 57°17'49" E	133.81'
L11	S 32°42'11" E	14.21'
L12	N 59°37'22" E	27.76'
L13	N 32°42'11" W	19.75'
L14	N 55°22'30" E	99.58'
L15	N 13°17'29" W	21.14'
L16	N 84°47'53" W	13.71'
L17	S 54°53'50" W	107.32'
L18	N 53°02'21" W	8.43'
L19	N 28°50'05" W	20.25'
L20	N 17°44'50" W	36.63'
L21	N 27°28'37" W	34.82'
L22	N 51°27'59" W	30.16'
L23	N 23°30'10" W	21.31'
L24	N 32°42'11" W	85.37'
L25	N 57°17'49" E	12.30'
L26	N 17°53'11" W	28.96'



205-E-Bulifants Blvd., Williamsburg, VA 23188  
 Phone: (757) 565-1677 Fax: (757) 565-0782  
 web: landtechresources.com

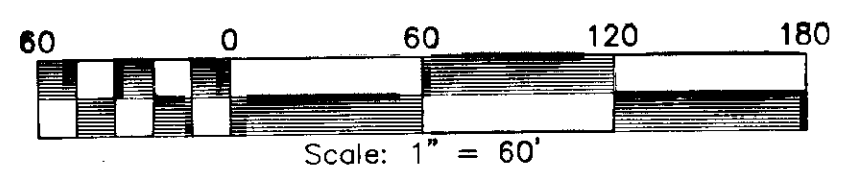
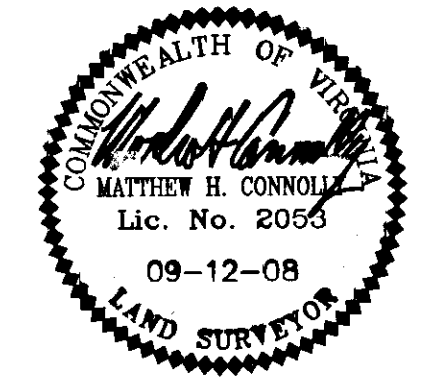
- LEGEND**
- IRF = IRON ROD FOUND
  - IPF = IRON PIPE FOUND
  - IRS = IRON ROD SET
  - PPF = PINCHED PIPE FOUND
  - = CONSERVATION EASEMENT SIGN
  - ▨ = CONSERVATION EASEMENT TO BE DEDICATED TO JAMES CITY COUNTY



N/F  
 NEWPORT DATSUN, LTD.  
 D.B. 213, PG. 120  
 P.B. 27 PG. 57  
 PIN # 5920100001

City of Williamsburg & County of James City  
 Circuit Court: This PLAT was recorded on  
 10 November 2009  
 at 12:04 AM/PM, PG. 1  
 DOCUMENT # 090030123  
 BETSY B. WOOLRIDGE, CLERK  
 Betsy B. Woolridge, Clerk

CONSERVATION EASEMENT AREA #2  
 HEREBY DEDICATED TO  
 JAMES CITY COUNTY  
 (88,511 SF)



L Large/Small Plats Recorded  
 herewith as # 090030123