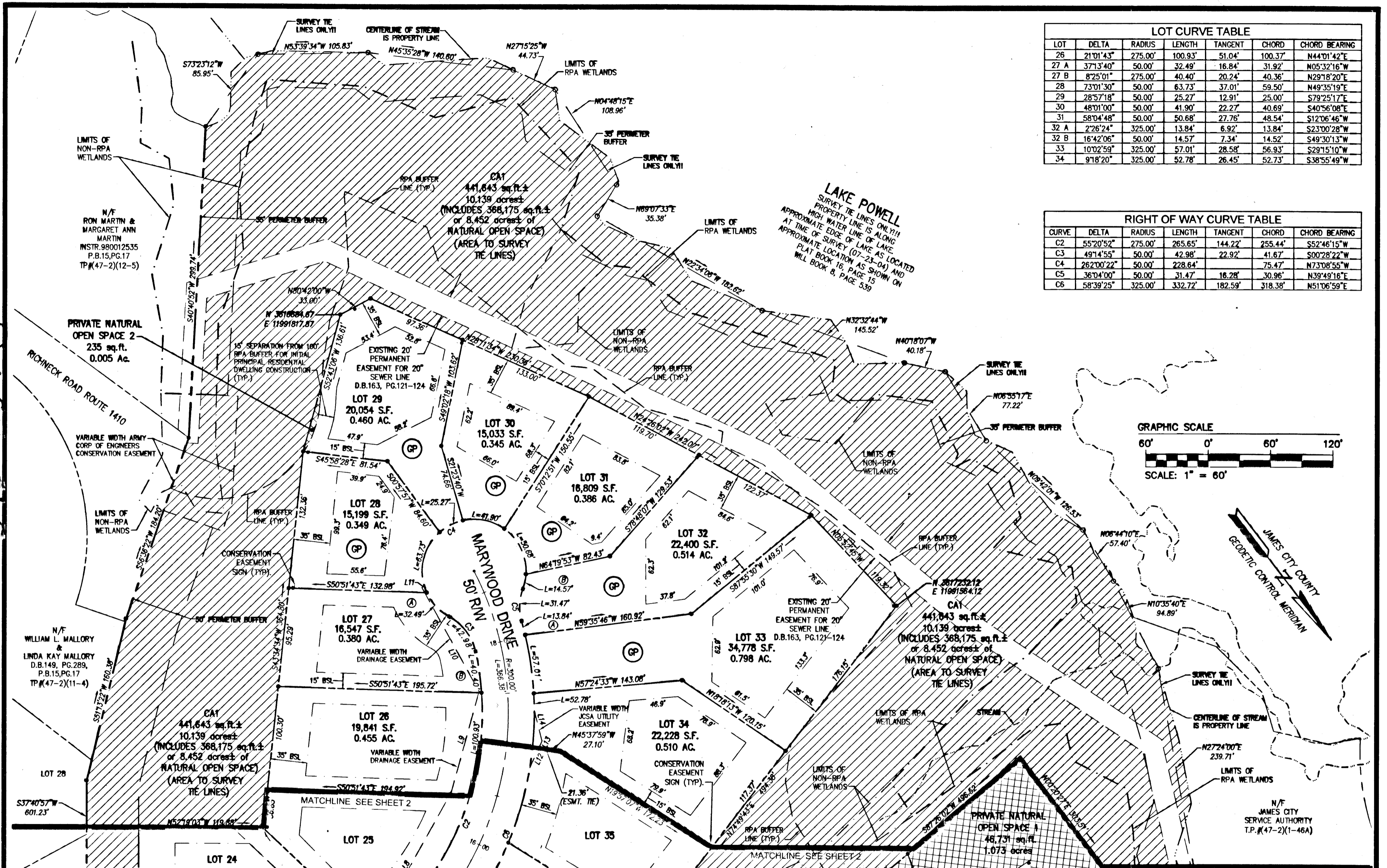
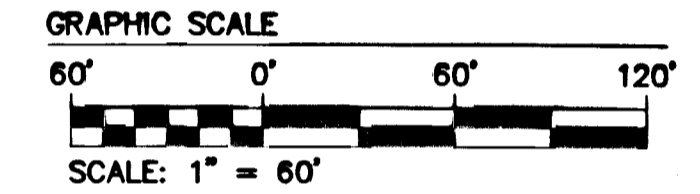


090028718

LOT CURVE TABLE						
LOT	DELTA	RADIUS	LENGTH	TANGENT	CHORD	CHORD BEARING
26	21°01'43"	275.00'	100.93'	51.04'	100.37'	N44°01'42"E
27 A	37°13'40"	50.00'	32.49'	16.84'	31.92'	N05°32'16"W
27 B	8°25'01"	275.00'	40.40'	20.24'	40.36'	N29°18'20"E
28	73°01'30"	50.00'	63.73'	37.01'	59.50'	N49°35'19"E
29	28°57'18"	50.00'	25.27'	12.91'	25.00'	S79°25'17"E
30	48°01'00"	50.00'	41.90'	22.27'	40.69'	S40°56'08"E
31	58°04'48"	50.00'	50.68'	27.76'	48.54'	S12°06'46"W
32 A	2°26'24"	325.00'	13.84'	6.92'	13.84'	S23°00'28"W
32 B	16°42'06"	50.00'	14.57'	7.34'	14.52'	S49°30'13"W
33	10°02'59"	325.00'	57.01'	28.58'	56.93'	S29°15'10"W
34	9°18'20"	325.00'	52.78'	26.45'	52.73'	S38°55'49"W

RIGHT OF WAY CURVE TABLE						
CURVE	DELTA	RADIUS	LENGTH	TANGENT	CHORD	CHORD BEARING
C2	55°20'52"	275.00'	265.65'	144.22'	255.44'	S52°46'15"W
C3	49°14'55"	50.00'	42.98'	22.92'	41.67'	S00°28'22"W
C4	26°20'22"	50.00'	228.64'		75.47'	N73°08'55"W
C5	36°04'00"	50.00'	31.47'	16.28'	30.96'	N39°49'16"E
C6	58°39'25"	325.00'	332.72'	182.59'	318.38'	N51°06'59"E



INDICATES AREA OF NATURAL OPEN SPACE TO REMAIN UNDISTURBED AND TO BE DEDICATED TO JAMES CITY COUNTY.

INDICATES AREA OF PRIVATE NATURAL OPEN SPACE TO REMAIN UNDISTURBED AND TO BE DEDICATED BY EASEMENT TO JAMES CITY COUNTY

NOTE 1: CONSERVATION EASEMENT SIGNS TO BE INSTALLED AT THE INTERSECTION OF PROPERTY LINES AND EASEMENT AND AS SHOWN.

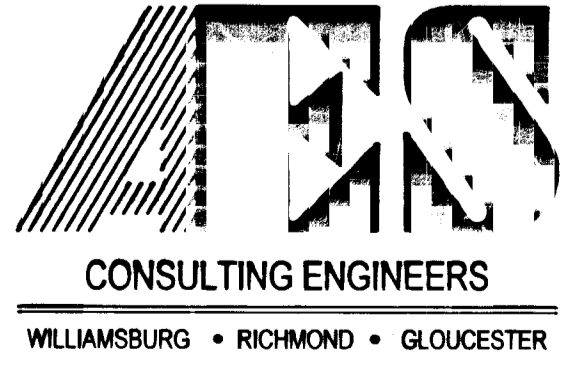
NOTE 2: CA1 - COMMON AREA 1

NOTE 3: 15' SEPARATION FROM 100' RPA BUFFER FOR INITIAL PRINCIPAL RESIDENTIAL DWELLING CONSTRUCTION (TYP.)

NOTE 4: SEE SHEET 2 FOR EASEMENT LINE TABLE

NOTE 5: GRINDER PUMP REQUIRED

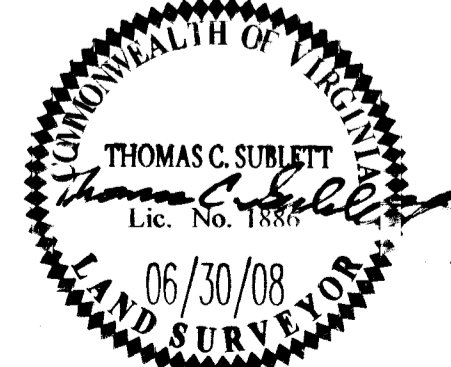
3 Large/Small Plat(s) Recorded herewith as # 090028718



5248 Olde Towne Road, Suite 1
Williamsburg, Virginia 23188
(757) 253-0040
Fax (757) 220-8994

PLAT OF SUBDIVISION MARYWOOD
PHASE IV
LOTS 20-46
PREPARED FOR CENTEX HOMES

JAMESTOWN DISTRICT JAMES CITY COUNTY VIRGINIA



City of Williamsburg & County of James City
Circuit Court: This PLAT was recorded on 26 October 2007
at 11:29 AM/PM, PB PG
DOCUMENT # 090028718
BETSY B. WOOLRIDGE, CLERK
Betsy B. Woolridge Clerk

No.	DATE	REVISION / COMMENT / NOTE	BY
2	10/07/09	REPRINTED SHEET 1 FOR SIGNATURES	JFS
1	10/01/08	REVISED PER COUNTY COMMENTS	JFS

Designed JAG/MJR	Drawn JFS
Scale 1"=60'	Date 6/30/08
Project No. 9272	
Drawing No. 3 of 3	