

# #090027398

LINE	LENGTH	BEARING
L1	7.90'	N64°17'59"W
L2	45.28'	N64°09'54"W
L3	24.52'	N64°25'59"W
L4	42.66'	N63°56'42"W
L5	27.67'	N63°06'06"W
L6	57.11'	N63°56'29"W
L7	80.16'	N64°11'24"W
L8	67.35'	N64°17'10"W
L9	51.27'	N65°02'42"W
L10	12.33'	S25°45'24"W
L11	7.26'	N65°18'57"W
L12	24.27'	N64°14'20"W
L13	3.02'	N65°48'13"W
L14	13.82'	N04°49'27"E
L15	8.53'	S63°02'33"W
L16	8.87'	N45°15'41"W
L17	8.53'	S63°02'33"W
L18	11.19'	N45°15'41"W
L19	101.28'	N27°12'12"E
L20	28.67'	N52°41'59"E
L21	50.13'	S62°47'48"E
L22	24.61'	N25°45'38"E
L23	17.20'	S64°14'20"E
L24	314.33'	S25°45'24"W
L25	35.68'	N64°14'36"W
L26	1.50'	N64°24'03"W
L27	162.91'	N25°35'57"E
L28	126.27'	N64°14'09"W
L29	97.43'	S25°35'57"W
L30	143.31'	N64°51'18"W
L31	142.94'	S64°51'18"E
L32	111.11'	S25°35'57"W
L33	391.26'	S13°03'52"W
L34	274.48'	S13°03'52"W
L35	29.55'	N67°26'56"W
L36	17.57'	S25°33'49"W
L37	79.47'	S47°14'01"W
L38	86.07'	N47°16'22"E
L39	9.96'	S67°26'56"E
L40	45.34'	S67°26'56"E
L41	34.88'	N22°42'25"E
L42	8.43'	N67°17'32"W
L43	211.57'	N25°45'24"E
L44	173.24'	S67°17'32"E
L45	393.58'	S22°17'02"W
L46	20.00'	S22°17'02"W
L47	33.70'	S22°17'02"W
L48	34.32'	N10°13'09"E
L49	7.18'	S68°44'57"E
L50	135.99'	S68°44'57"E

LINE	LENGTH	BEARING
L51	10.00'	S21°22'12"W
L52	10.00'	S21°22'12"W
L53	132.11'	N68°44'57"W
L54	11.44'	N68°44'57"W
L55	37.41'	N10°14'54"E
L56	15.00'	N67°48'52"W
L57	193.64'	S22°11'49"W
L58	110.06'	N67°26'56"W
L59	48.87'	S29°01'47"W
L60	69.21'	S21°33'23"W
L61	161.42'	N71°01'30"W
L62	3.94'	N16°45'07"E
L63	160.37'	S71°01'30"E
L64	11.98'	S23°59'37"W
L65	57.67'	S28°17'40"W
L66	147.27'	N71°28'09"W
L67	5.00'	S16°45'07"W
L68	5.00'	S16°45'07"W
L69	145.23'	S71°28'09"E
L70	23.99'	S22°14'08"W
L71	38.20'	S22°28'52"W
L72	22.68'	S27°28'28"W
L73	11.96'	S40°22'38"W
L74	121.29'	N52°25'07"W
L75	119.60'	S52°25'07"E
L76	10.93'	S40°22'38"W
L77	32.07'	S43°53'27"W
L78	30.83'	S41°21'21"W
L79	26.23'	S49°41'11"W
L80	28.49'	N82°36'15"W
L81	18.17'	N82°52'10"W
L82	206.42'	S22°17'02"W
L83	27.75'	N13°02'56"E
L84	30.01'	N78°16'06"W
L85	37.27'	S78°25'08"W
L86	106.08'	N86°45'12"E
L87	186.50'	N49°22'38"E
L88	187.06'	N78°16'06"W
L89	238.49'	N13°02'56"E
L90	51.19'	N52°59'46"E
L91	69.53'	N14°21'28"E
L92	75.54'	N10°00'29"W
L93	27.01'	N73°15'29"W
L94	57.22'	N05°31'46"W
L95	81.36'	N08°25'48"E
L96	65.05'	N19°01'39"E
L97	51.05'	N07°38'38"E
L98	10.94'	N79°51'12"W
L99	7.22'	N07°16'37"E
L100	61.21'	N07°01'26"W

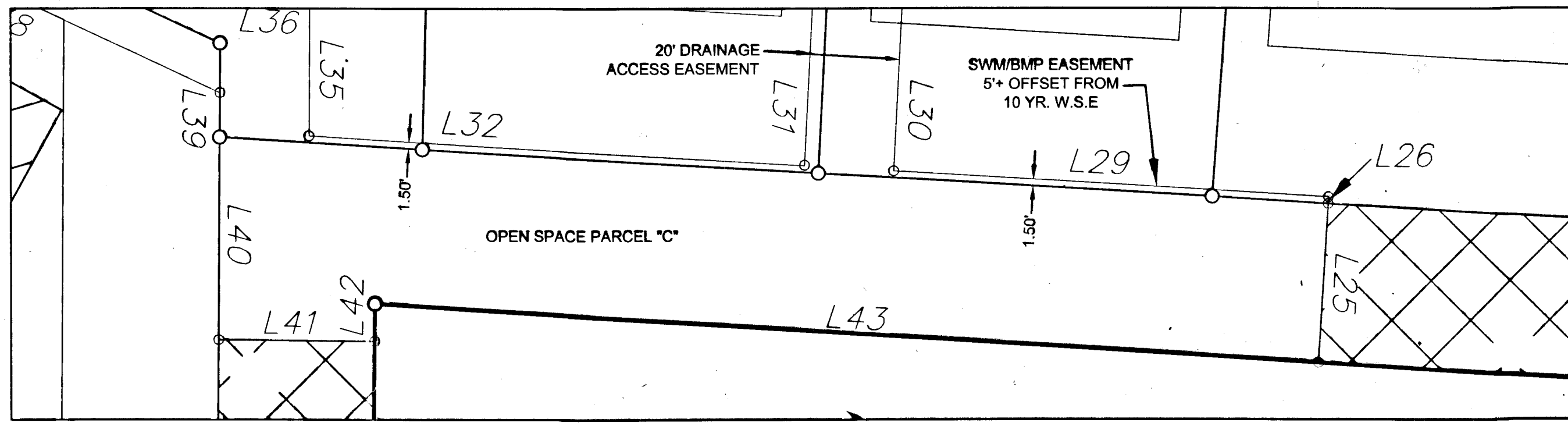
LINE	LENGTH	BEARING
L101	20.12'	N69°06'34"W
L102	65.84'	N12°43'35"W
L103	139.22'	N83°25'47"W
L104	5.08'	S16°45'07"W
L105	151.46'	N83°25'47"W
L106	4.28'	N12°43'35"W
L107	118.76'	S77°40'53"E
L108	27.89'	N13°03'52"E
L109	39.32'	S76°56'08"E
L110	178.32'	S13°03'52"W
L111	39.32'	N76°56'08"W
L112	130.43'	N13°03'52"E
L113	118.17'	N77°40'53"W
L114	26.77'	N76°08'56"W
L115	135.52'	S71°25'36"E
L116	22.46'	S13°03'52"W
L117	8.29'	N13°03'52"E
L118	39.44'	S76°56'08"E
L119	22.46'	S13°03'52"W
L120	96.71'	S25°17'09"W
L121	83.71'	S22°21'10"W
L122	39.44'	S67°38'50"W
L123	84.72'	N22°21'10"E
L124	83.33'	N25°17'09"E
L125	136.47'	N71°27'06"W
L126	5.44'	S24°09'11"W
L127	34.22'	S50°49'20"E
L128	51.04'	S04°16'13"E
L129	181.06'	S26°43'40"W
L130	140.51'	S41°04'17"W
L131	131.85'	N76°54'52"W
L132	71.14'	S22°18'20"W
L133	37.66'	N67°41'40"W
L134	145.53'	S22°08'09"W
L135	12.28'	S70°14'19"W
L136	7.26'	S79°00'17"W
L137	27.67'	S23°46'10"W
L138	44.22'	S23°59'37"W
L139	38.28'	S48°11'54"W
L140	44.54'	S79°00'17"W
L141	99.54'	N13°03'52"E
L142	23.59'	S13°52'45"E
L143	40.44'	S27°21'24"E
L144	30.01'	S45°05'51"E
L145	25.28'	S58°14'31"E

LINE	LENGTH	BEARING
L146	31.83'	S74°03'35"E
L147	54.39'	N86°25'24"E
L148	16.79'	S71°20'29"E
L149	31.78'	S12°59'58"W
L150	89.50'	N13°04'04"E
L151	55.57'	S77°29'28"W
L152	46.05'	S45°35'44"W
L153	29.38'	S41°15'32"W
L154	1.03'	S14°21'28"W

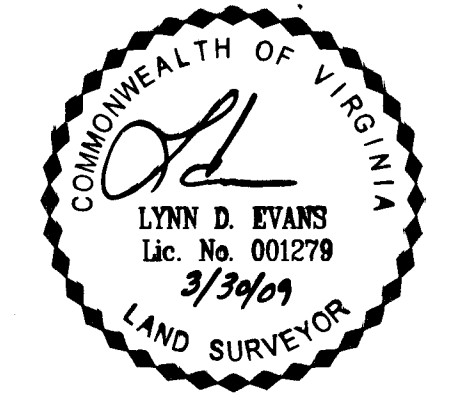
CURVE	DELTA	RADIUS	LENGTH	CHORD BEARING	CHORD LENGTH
C1	76°24'36"	25.00'	32.94'	S65°52'10"W	30.61'
C2	1°13'48"	4325.00'	92.84'	S26°35'18"W	92.84'
C3	1°12'44"	4325.00'	91.51'	S25°22'02"W	91.50'
C4	1°13'26"	4325.00'	92.39'	S24°08'57"W	92.39'
C5	0°25'59"	4325.00'	32.68'	S23°19'14"W	32.68'
C6	2°16'04"	1505.00'	59.57'	S21°58'13"W	59.56'
C7	83°23'57"	10.00'	14.56'	S20°51'47"E	13.30'
C8	20°02'02"	225.00'	78.67'	N52°32'45"W	78.27'
C9	19°04'44"	225.00'	74.92'	N32°59'21"W	74.58'
C10	80°31'01"	175.00'	245.93'	N18°53'19"W	226.18'
C11	102°44'13"	10.00'	17.93'	S69°29'04"W	15.62'
C12	3°24'15"	1555.00'	92.39'	S20°15'56"W	92.38'
C13	1°08'11"	1555.00'	30.84'	S22°32'09"W	30.84'
C14	0°43'56"	4375.00'	55.90'	S23°28'13"W	55.90'
C15	1°14'13"	4375.00'	94.46'	S24°27'17"W	94.45'
C16	1°14'53"	4375.00'	95.29'	S25°41'50"W	95.29'
C17	0°52'55"	4375.00'	67.35'	S26°45'44"W	67.35'
C18	79°13'23"	25.00'	35.40'	N13°22'02"W	32.52'
C19	16°43'50"	225.00'	65.70'	N15°05'04"W	65.47'
C20	23°55'17"	225.00'	93.94'	N05°14'29"E	93.26'
C21	4°10'04"	225.00'	16.37'	N19°17'10"E	16.36'
C22	32°19'21"	135.00'	76.16'	N37°31'52"E	75.15'
C23	9°21'00"	135.00'	22.03'	N58°22'03"E	22.01'
C24	45°34'30"	85.00'	67.61'	S40°15'18"W	65.84'
C25	45°01'01"	16.00'	12.57'	S05°45'24"E	12.25'
C26	59°03'06"	42.00'	43.29'	N01°15'39"E	41.40'
C27	51°21'14"	42.00'	37.64'	N56°27'49"E	36.40'
C28	60°11'12"	42.00'	44.12'	S67°45'58"E	42.12'
C29	51°21'27"	42.00'	37.65'	S11°59'39"E	36.40'
C30	48°05'03"	42.00'	35.25'	S37°43'37"W	34.22'
C31	45°01'01"	16.00'	12.57'	N39°15'38"E	12.25'
C32	13°06'33"	135.00'	30.89'	S23°18'23"W	30.82'
C33	75°07'20"	13.00'	17.04'	N07°42'00"W	15.85'
C34	8°09'17"	135.00'	19.21'	S41°11'02"E	19.20'
C35	31°24'49"	135.00'	74.02'	S21°24'00"E	73.09'
C36	11°20'59"	135.00'	26.74'	S00°01'06"E	26.70'
C37	2°10'17"	1555.00'	58.93'	S06°44'32"W	58.93'
C38	3°32'42"	1555.00'	96.21'	S09°36'01"W	96.19'
C39	3°39'00"	1555.00'	99.06'	S13°11'52"W	99.04'
C40	3°32'26"	1555.00'	96.09'	S16°47'35"W	96.08'
C41	41°40'21"	85.00'	61.82'	N42°12'22"E	60.47'
C42	4°20'09"	135.00'	10.22'	S60°52'29"W	10.21'
C43	76°01'55"	10.00'	13.27'	S83°16'38"E	12.32'
C44	50°55'04"	85.00'	75.54'	S19°48'08"E	73.08'
C45	12°27'34"	1505.00'	327.27'	S11°53'11"W	326.63'
C46	0°42'56"	85.00'	1.06'	S17°06'35"W	1.06'
C47	2°32'50"	225.00'	10.00'	N43°48'08"W	10.00'
C48	2°32'51"	225.00'	10.00'	N41°15'18"W	10.00'
C49	3°22'15"	85.00'	5.00'	S19°09'10"W	5.00'
C50	6°56'10"	42.00'	5.08'	N27°19'07"E	5.08'

CURVE	DELTA	RADIUS	LENGTH	CHORD BEARING	CHORD LENGTH
C51	6°50'13"	42.00'	5.01'	N34°12'18"E	5.01'
C54	0°22'02"	1555.00'	9.96'	S11°33'23"W	9.96'
C55	0°22'12"	1555.00'	10.04'	S11°11'16"W	10.04'
C56	0°22'09"	1555.00'	10.02'	S22°09'08"W	10.02'
C57	0°22'09"	1555.00'	10.02'	S21°46'59"W	10.02'
C61	0°13'21"	4325.00'	16.80'	S24°52'20"W	16.80'
C62	0°02'33"	4325.00'	3.20'	S24°44'23"W	3.20'

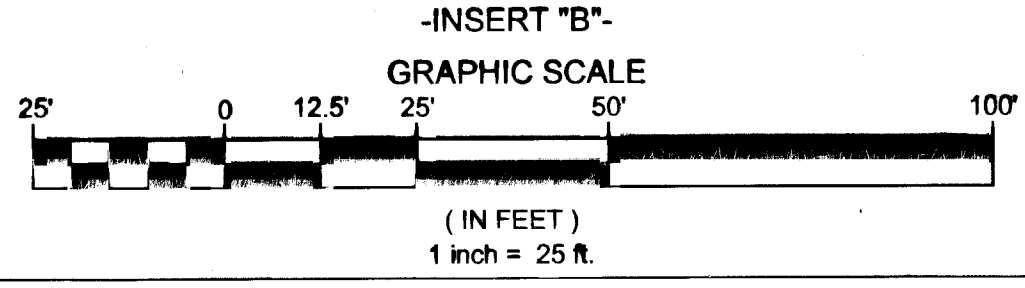
<b>OPEN SPACE AREAS:</b>	<b>NATURAL OPEN SPACE AREAS:</b>
"A" = 25,415 SF OR 0.583 AC	"1" = 16,829 SF OR 0.386 AC
"B" = 23,633 SF OR 0.543 AC	"2" = 22,106 SF OR 0.507 AC
"C" = 9,074 SF OR 0.208 AC	"3" = 28,361 SF OR 0.651 AC
"D" = 3,216 SF OR 0.074 AC	"4" = 49,357 SF OR 1.133 AC
"E" = 4,509 SF OR 0.104 AC	"5" = 18,188 SF OR 0.418 AC
"F" = 51,795 SF OR 1.189 AC	"6" = 2,171 SF OR 0.050 AC
<b>TOTAL</b> 117,641 SF OR 2.701 AC	<b>TOTAL</b> 143,805 SF OR 3.301 AC



VIRGINIA STATE PLANE  
COORDINATE SYSTEM  
MAD83 SOUTH ZONE



City of Williamsburg & County of James City  
Circuit Court: This PLAT was recorded on  
5 October 2009  
at 11:17 AM/PM, PB - PG -  
DOCUMENT # 090027398  
BETSY B. WOOLRIDGE, CLERK  
*Betsy B. Woolridge* Clerk



5 Large/Small Plats Recorded  
herein as # 090027398

**Bury+Partners**  
ENGINEERING SOLUTIONS  
4095 Ironbound Road, Suite 200  
Williamsburg, Virginia 23188  
Tel. (5757)229-1776 Fax (757)229-4683  
Bury+Partners, Inc. ©Copyright 2007

Checked By: LDE	Drawn By: KTL	Scale: 1"=50'	Date: 3/31/09	Project No.: 210770002
--------------------	------------------	------------------	------------------	---------------------------

REV. 3/30/09

SHEET C5