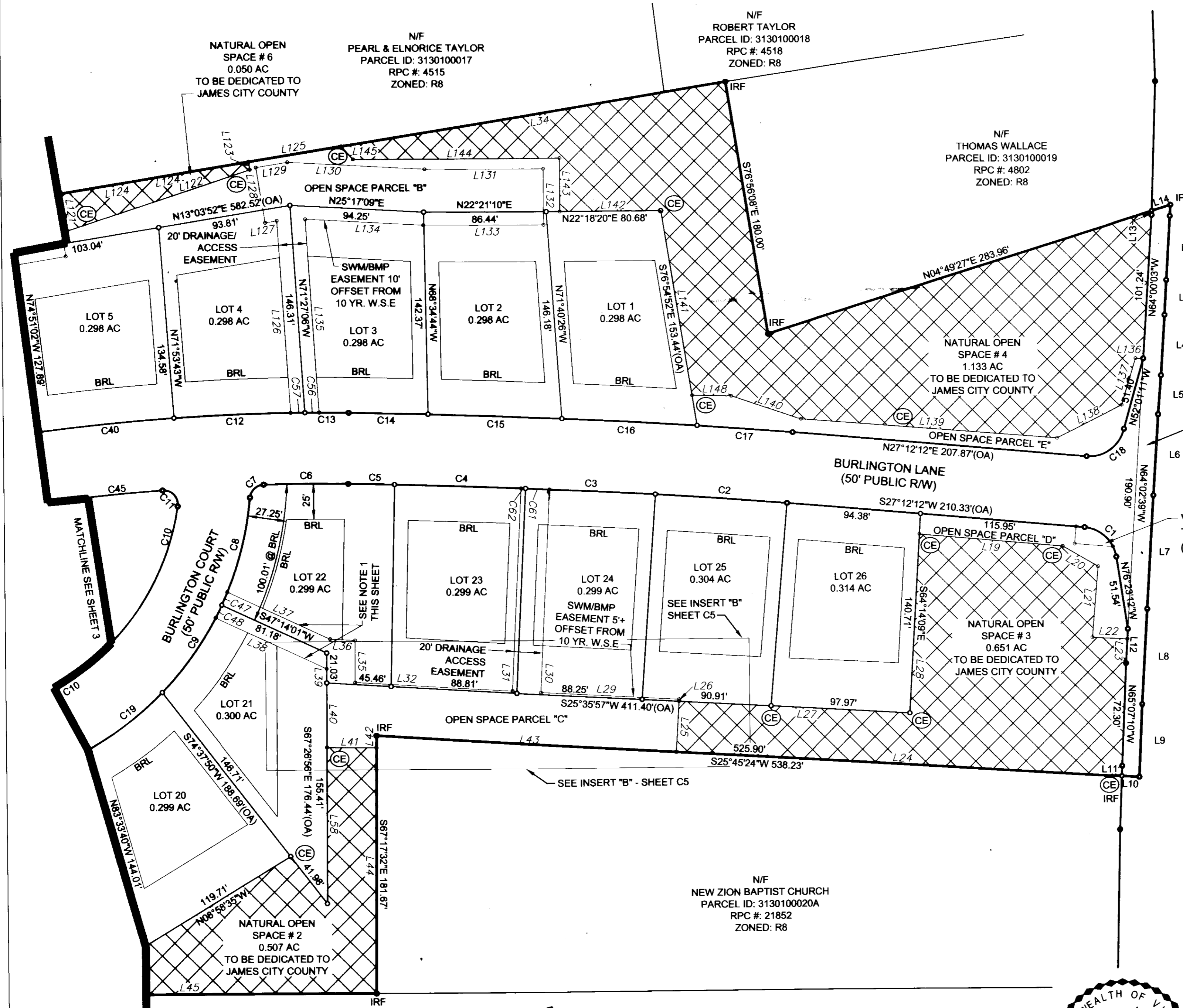
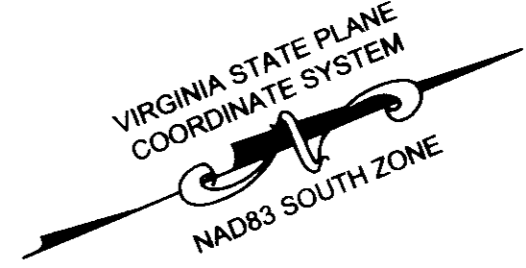


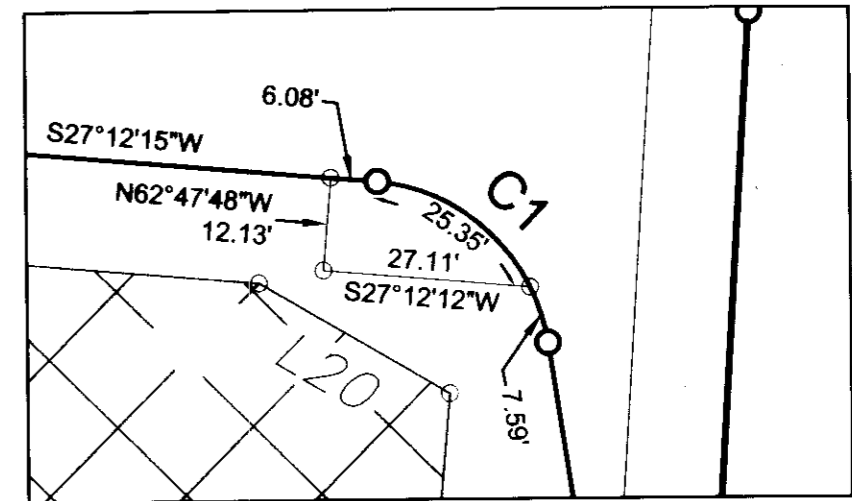
#090027398



LONGHILL ROAD (ROUTE 612)
(VARIABLE WIDTH R/W)

VARIABLE WIDTH STRIP TO BE DEDICATED TO V.D.O.T.
AREA = 5,115 S.F. OR 0.117 AC.

VARIABLE WIDTH UTILITY EASEMENT TO BE DEDICATED TO J.C.S.A.
(SEE INSERT "C" THIS SHEET)



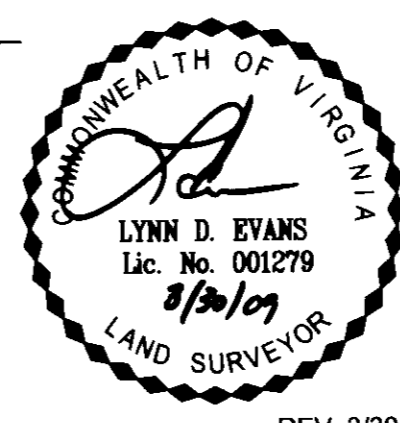
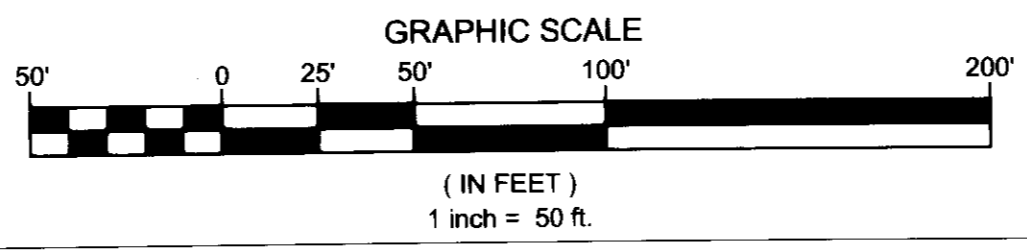
-INSERT "C"-
1"=25'

OPEN SPACE AREAS:		NATURAL OPEN SPACE AREAS:	
"A"	= 25,415 SF OR 0.583 AC	"1"	= 16,829 SF OR 0.386 AC
"B"	= 23,633 SF OR 0.543 AC	"2"	= 22,106 SF OR 0.507 AC
"C"	= 9,074 SF OR 0.208 AC	"3"	= 28,361 SF OR 0.651 AC
"D"	= 3,216 SF OR 0.074 AC	"4"	= 49,357 SF OR 1.133 AC
"E"	= 4,509 SF OR 0.104 AC	"5"	= 18,188 SF OR 0.418 AC
"F"	= 51,795 SF OR 1.189 AC	"6"	= 2,171 SF OR 0.050 AC
TOTAL	117,641 SF OR 2.701 AC	"7"	= 6,793 SF OR 0.156 AC
		TOTAL	143,805 SF OR 3.301 AC

City of Williamsburg & County of James City
Circuit Court: This PLAT was recorded on
5 October 2009
at 11:17 AM/P.M. PB PG
DOCUMENT # 090027398
BETSY B. WOOLRIDGE, CLERK
Betsy B. Woolridge Clerk

- NOTES:**
- VARIABLE WIDTH DRAINAGE EASEMENT.
 - ALL DRAINAGE AND ACCESS EASEMENTS ARE PRIVATE UNLESS SPECIFIED OTHERWISE.
 - NATURAL OPEN SPACE EASEMENTS SHALL REMAIN IN A NATURAL UNDISTURBED STATE EXCEPT FOR THOSE ACTIVITIES REFERENCED ON THE DEED OF EASEMENT.

Large/Small Plat(s) Recorded
howarth no # 090027398



REV. 3/30/09

SHEET C4

Bury+Partners
ENGINEERING SOLUTIONS
4095 Ironbound Road, Suite 200
Williamsburg, Virginia 23188
Tel. (575)229-1776 Fax (757)229-4683
Bury+Partners, Inc. ©Copyright 2007

Checked By: LDE	Drawn By: KTL	Scale: 1"=50'	Date: 3/31/09	Project No.: 210770002
--------------------	------------------	------------------	------------------	---------------------------