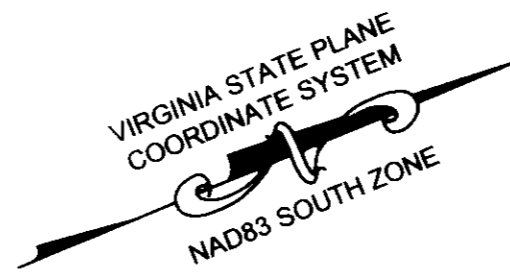
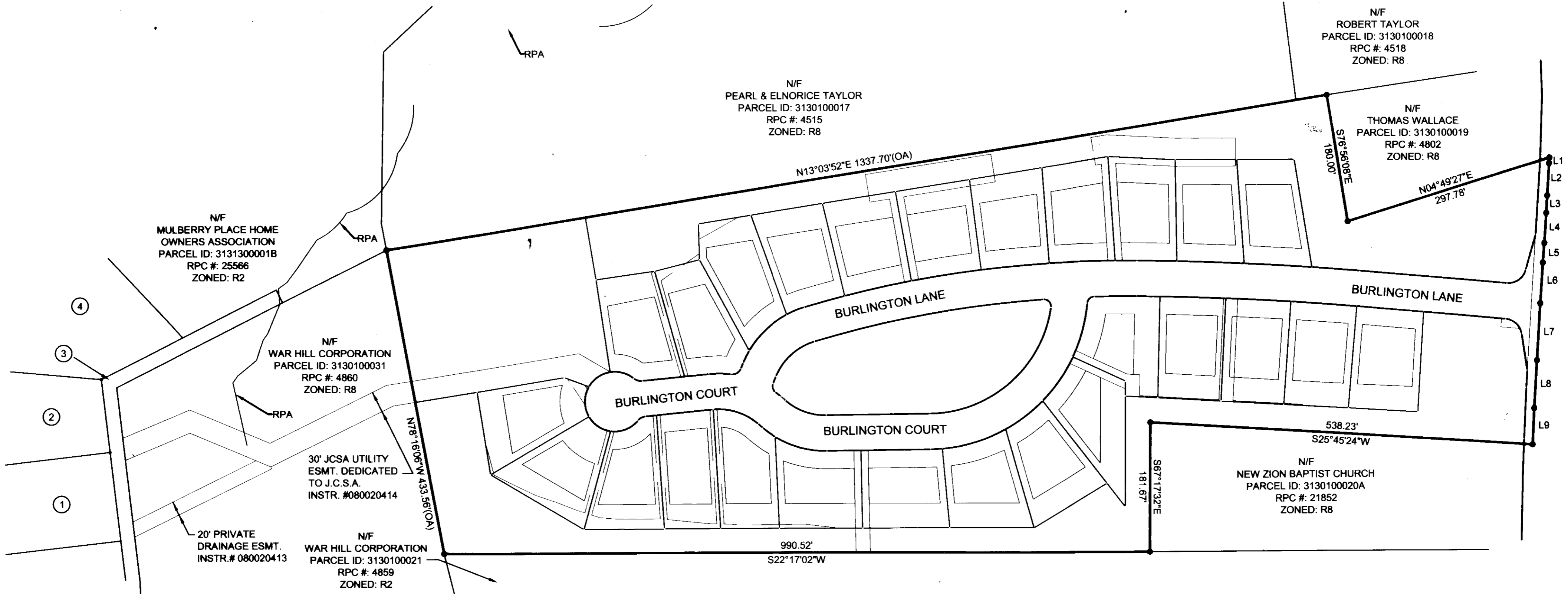


090027398

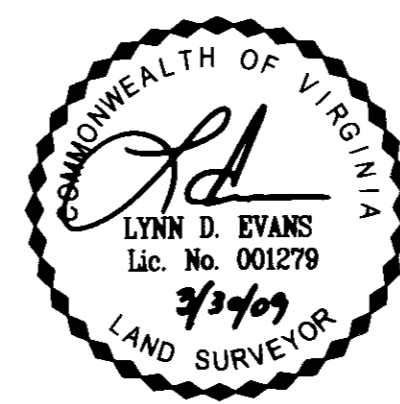
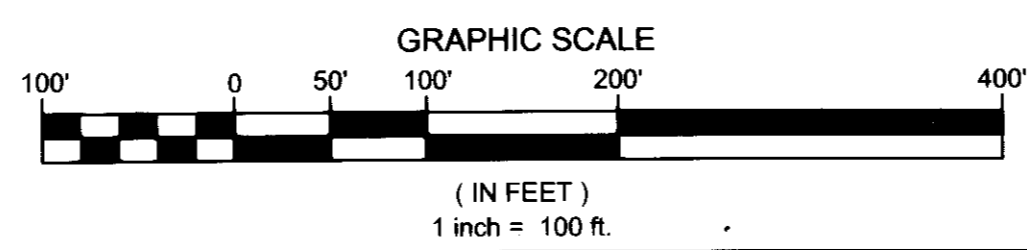


LINE	LENGTH	BEARING
L1	7.90'	N64°17'59"W
L2	45.28'	N64°09'54"W
L3	24.52'	N64°25'59"W
L4	42.66'	N63°56'42"W
L5	27.67'	N63°06'06"W
L6	57.11'	N63°56'29"W
L7	80.16'	N64°11'24"W
L8	67.35'	N64°17'10"W
L9	51.27'	N65°02'42"W



- ① N/F CATHLEEN A. TRUSTEE & JAMES F. AHERN
PARCEL ID: 3131000012
RPC #: 10387
ZONED: R4
 - ② N/F RICHARD P. & CATHERINE S. SCHIFFER
PARCEL ID: 3131000013
RPC #: 10388
ZONED: R4
 - ③ N/F FORD'S COLONY AT WILLIAMSBURG
PARCEL ID: 313100001A
RPC #: 10377
ZONED: R4
 - ④ N/F KURT N. & PAULINE T. DETWEILER
PARCEL ID: 3131000014
RPC #: 10389
ZONED: R4
- City of Williamsburg & County of James City
Circuit Court: This PLAT was recorded on 5 October 2009
at 11:17 AM/PM, PB. PG. —
DOCUMENT # 090027398
BETSY B. WOOLRIDGE, CLERK
Betsy B. Woolridge Clerk

5 Large/Small Plats Recorded
herewith as # 090027398



SHEET C2

Bury+Partners
ENGINEERING SOLUTIONS
4095 Ironbound Road, Suite 200
Williamsburg, Virginia 23188
Tel. (575)229-1776 Fax (757)229-4683
Bury+Partners, Inc. ©Copyright 2007

Checked By: LDE	Drawn By: KTL	Scale: 1"=100'	Date: 3/31/09	Project No.: 210770002
--------------------	------------------	-------------------	------------------	---------------------------

REV. 3/30/09