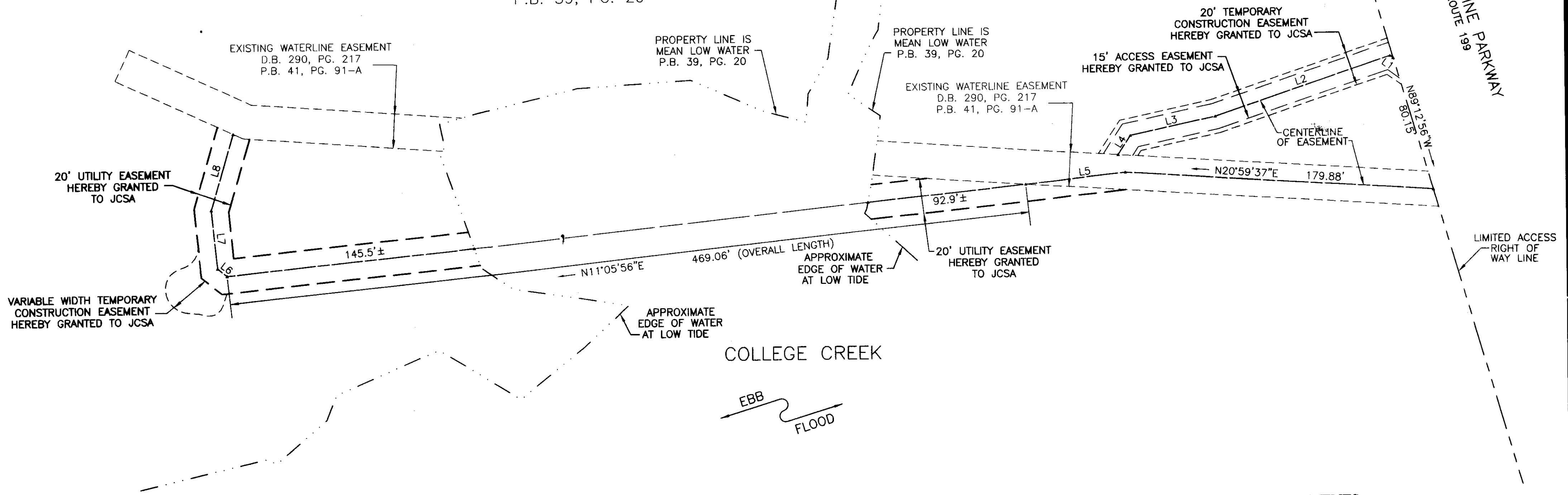


#090027396

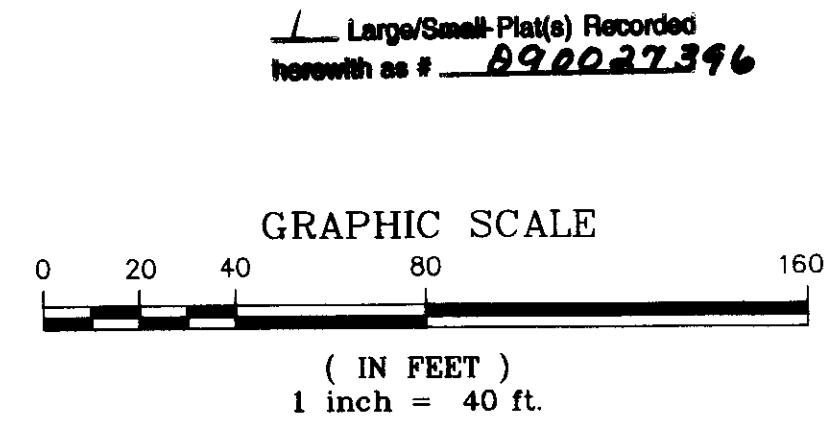
LINE TABLE		
LINE	LENGTH	BEARING
L1	2.28'	N53°37'05"E
L2	107.85'	N01°18'52"W
L3	50.70'	N05°00'20"E
L4	13.22'	N39°46'26"W
L5	58.19'	N11°05'56"E
L6	7.06'	N56°13'40"E
L7	34.19'	S78°38'36"E
L8	46.25'	S56°08'36"E

WILLIAMSBURG LANDING, INC.
 TAX PARCEL ID: 4820100002
 D.B. 246, PG. 116
 P.B. 39, PG. 20

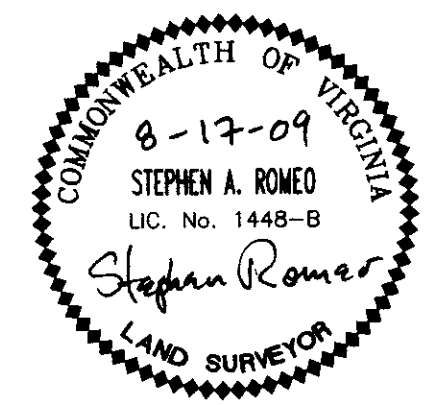


PLAT SHOWING EASEMENTS
 TO BE CONEYED BY
WILLIAMSBURG LANDING, INC.
 TO
JAMES CITY SERVICE AUTHORITY

JAMES CITY COUNTY, VIRGINIA
 DATE: 08-17-09 SCALE: 1"=40'



City of Williamsburg & County of James City
 Circuit Court: This PLAT was recorded on
5 October 2009
 at 10:39 AM/PM, PG. —
 DOCUMENT # 090027396
 BETSY B. WOOLRIDGE, CLERK
Betsy B. Woolridge Clerk



LANDMARK
DESIGN GROUP
 Engineers • Planners • Surveyors
 Landscape Architects • Environmental Consultants

4029 Ironbound Road
 Suite 100
 Williamsburg, VA 23188
 Tel. (757) 253-2975
 Fax (757) 229-0049
 Email: lmdg@landmarkdg.com