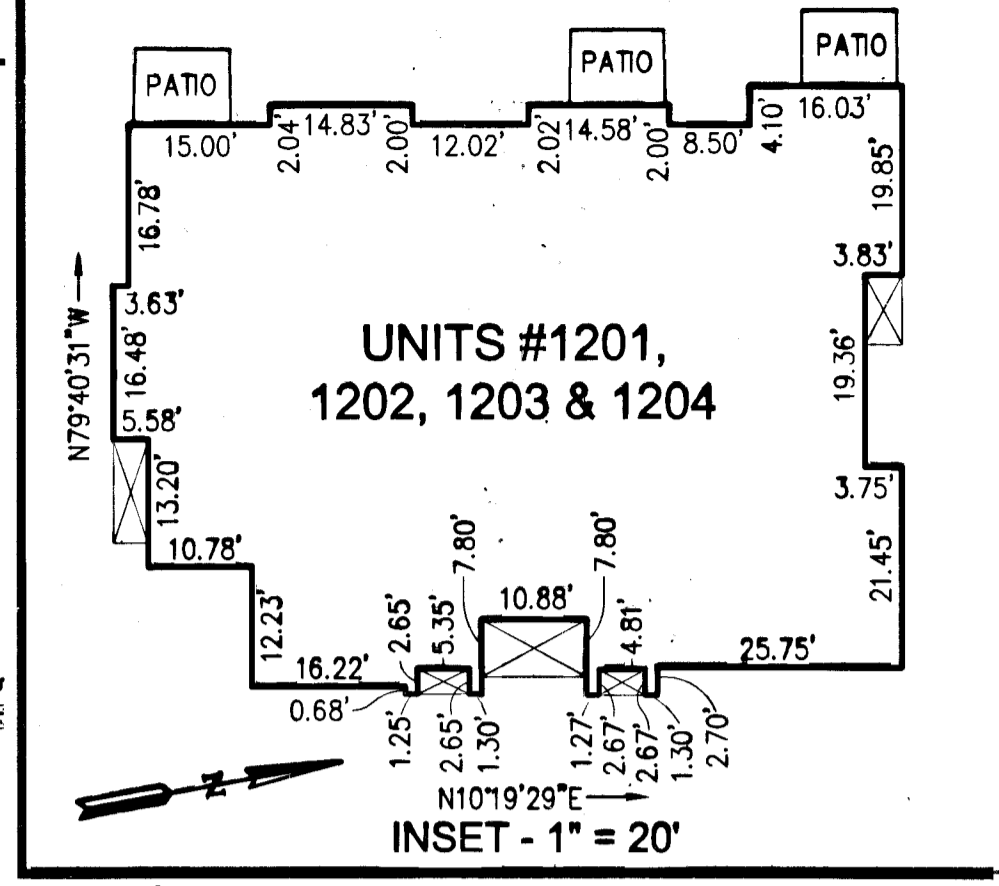
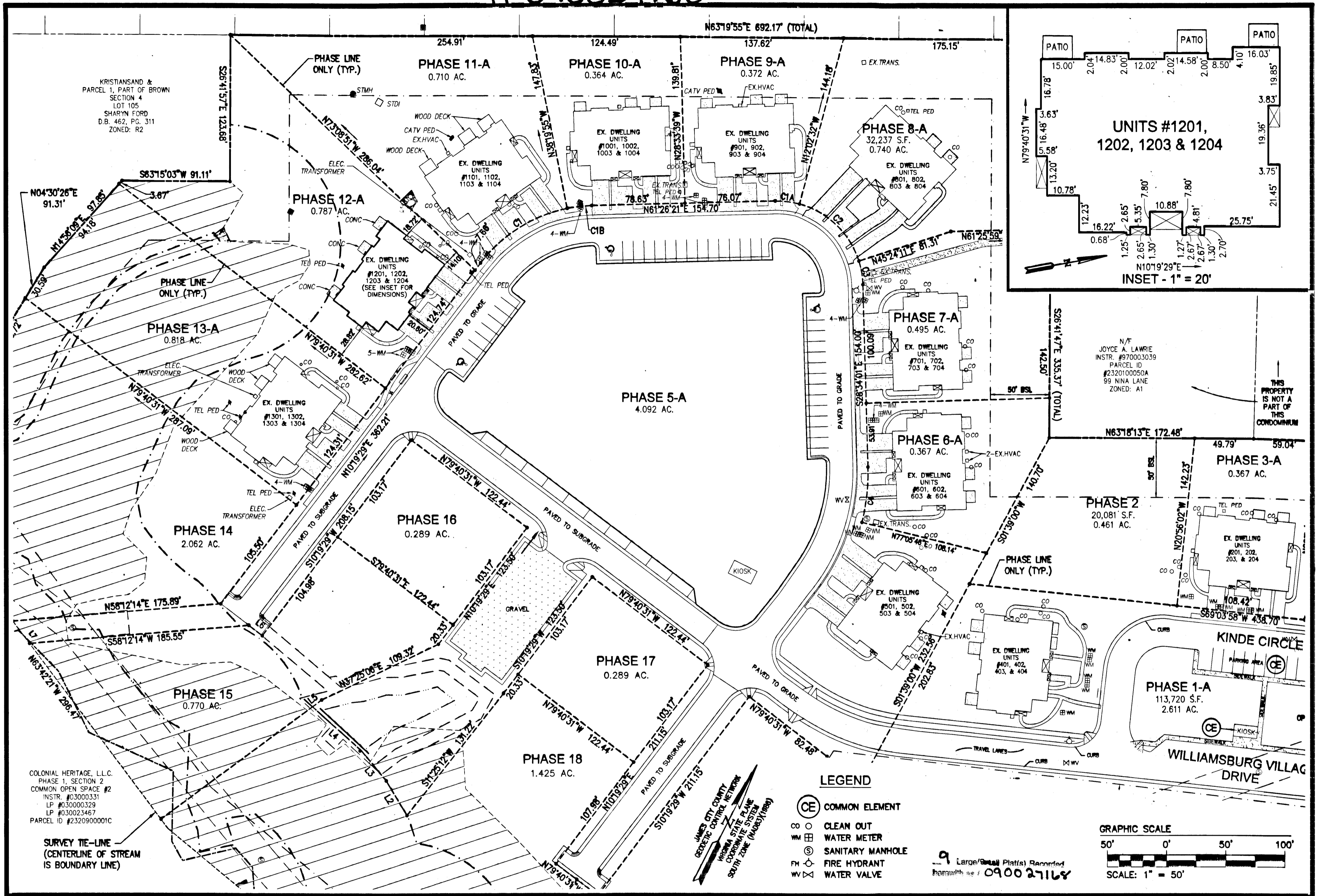


# 090027168



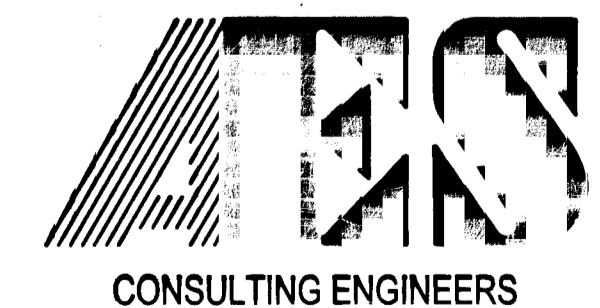
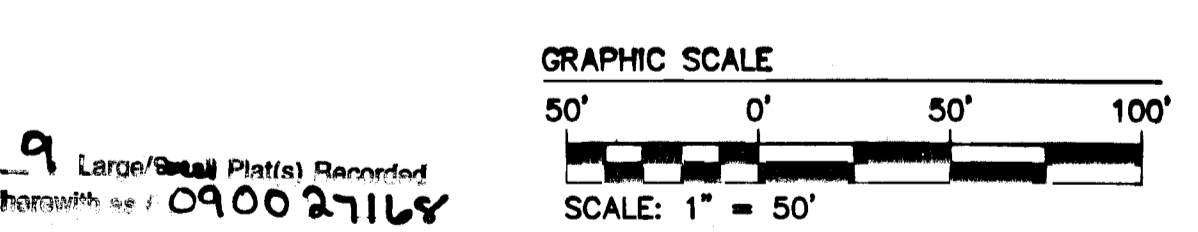
KRISTIANSSAND &  
PARCEL 1, PART OF BROWN  
SECTION 4  
LOT 105  
SHARVIN FORD  
D.B. 462, PG. 311  
ZONED: R2

N/F  
JOYCE A. LAWRIE  
INSTR. #970003039  
PARCEL ID  
#2320100050A  
99 NINA LANE  
ZONED: A1

COLONIAL HERITAGE, L.L.C.  
PHASE 1, SECTION 2  
COMMON OPEN SPACE #2  
INSTR. #03000331  
LP #030000329  
LP #030023467  
PARCEL ID #2320900001C

SURVEY TIE-LINE  
(CENTERLINE OF STREAM  
IS BOUNDARY LINE)

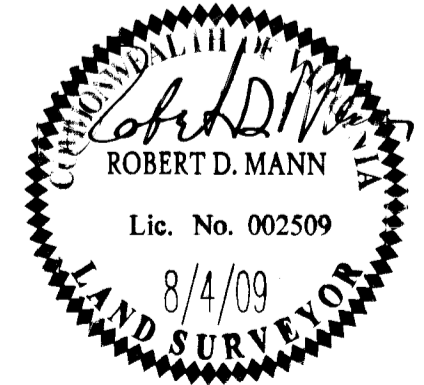
- LEGEND**
- CE COMMON ELEMENT
  - CO CLEAN OUT
  - WM WATER METER
  - SM SANITARY MANHOLE
  - FH FIRE HYDRANT
  - WV WATER VALVE



5248 Olde Towne Road, Suite 1  
Williamsburg, Virginia 23188  
(757) 253-0040  
Fax (757) 220-8994

WILLIAMSBURG • RICHMOND • GLOUCESTER • FREDERICKSBURG

"EXHIBIT 1"  
PLAN OF CONDOMINIUM  
**WILLIAMSBURG VILLAGE AT NORGE CONDOMINIUM**  
PHASE 12-A  
UNITS #1201, 1202, 1203, AND 1204  
STONEHOUSE DISTRICT COUNTY OF JAMES CITY VIRGINIA



City of Williamsburg & County of James City	
Circuit Court: This PLAT was recorded on	
9-30-2009	
at 2:16 PM, PG	
DOCUMENT # 090027168	
BETSY B. WOOLRIDGE, CLERK	
<i>Betsy B. Woolridge</i> Clerk	
No.	DATE
REVISION / COMMENT / NOTE	
BY	

Designed AES	Drawn AES
Scale 1"=50'	Date 8/4/09
Project No. 9286-2	
Drawing No. 2 of 9	