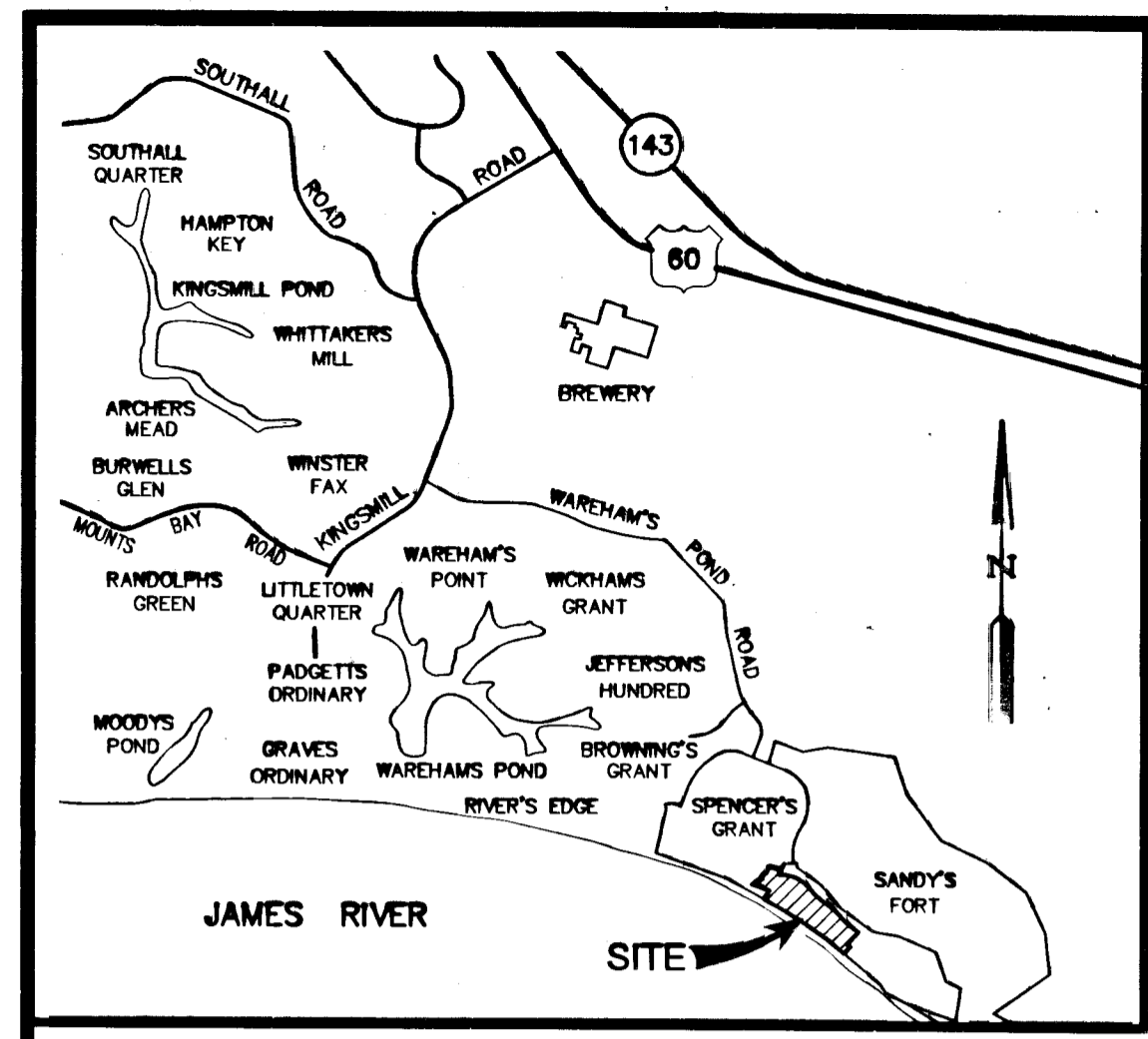
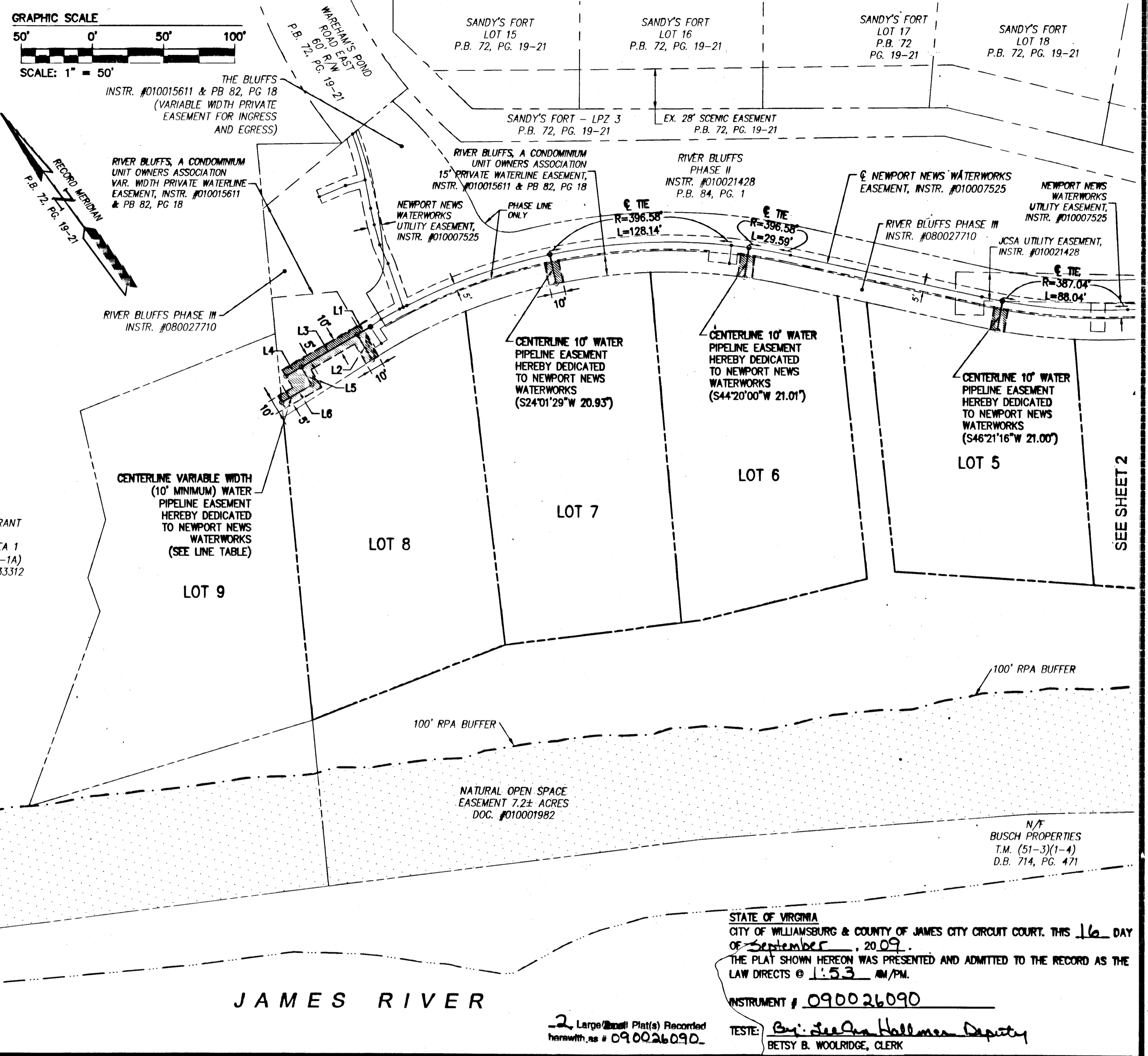
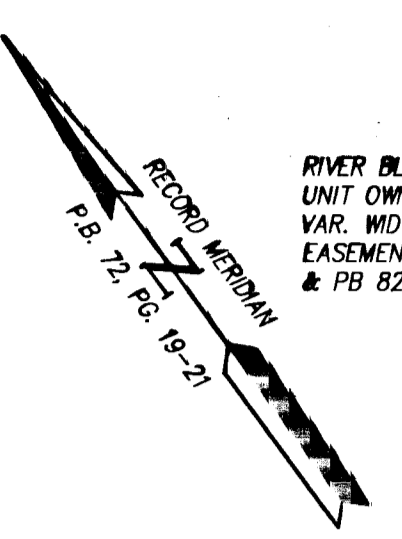
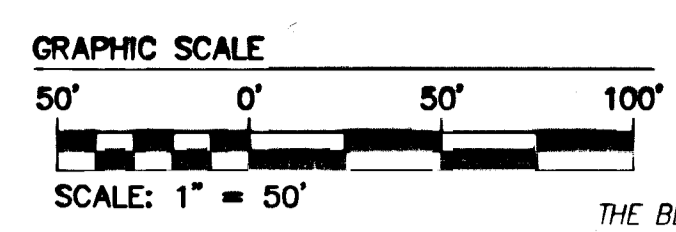


#090026090



VICINITY MAP
SCALE: 1"=2000'

LINE TABLE		
LINE	BEARING	LENGTH
L1	N84°08'27"W	10.68'
L2	S05°51'33"W	20.78'
L3	N84°08'27"W	45.56'
L4	N84°08'27"W	12.50'
L5	S05°51'33"W	14.40'
L6	N84°08'27"W	24.26'



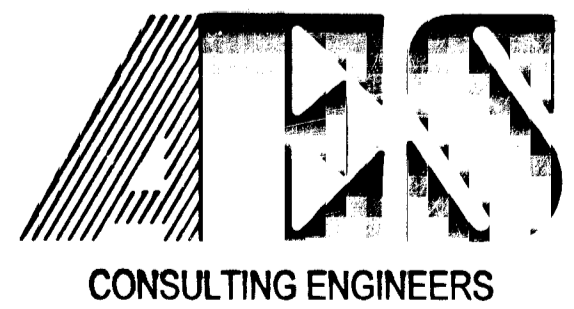
SPENCER'S GRANT
PHASE 1
COMMON AREA 1
T.M. (51-3)(1-1A)
INSTR. #070033312

N/F
BUSCH PROPERTIES
T.M. (51-3)(1-4)
D.B. 714, PG. 471

N/F
BUSCH PROPERTIES
T.M. (51-3)(1-4)
D.B. 714, PG. 471

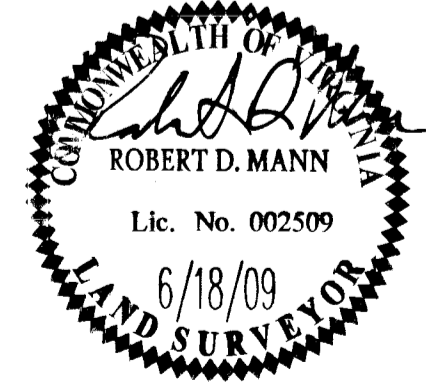
STATE OF VIRGINIA
CITY OF WILLIAMSBURG & COUNTY OF JAMES CITY CIRCUIT COURT. THIS 16 DAY
OF September, 2009.
THE PLAT SHOWN HEREON WAS PRESENTED AND ADMITTED TO THE RECORD AS THE
LAW DIRECTS @ 1:53 AM/PM.
INSTRUMENT # 090026090
TESTE: Betsy B. Woolridge
BETSY B. WOOLRIDGE, CLERK

S:\Jobs\75308-3-RiverBluffs-SingleFamily.dwg:SurfPlate\N\WW Easement\753-8-3 N\WW ESMT Lots 1-9 SH 1-2.dwg, 8/31/2009 9:10:14 AM, stephen.cooke



5248 Olde Towne Road, Suite 1
Williamsburg, Virginia 23188
(757) 253-0040
Fax (757) 220-8994

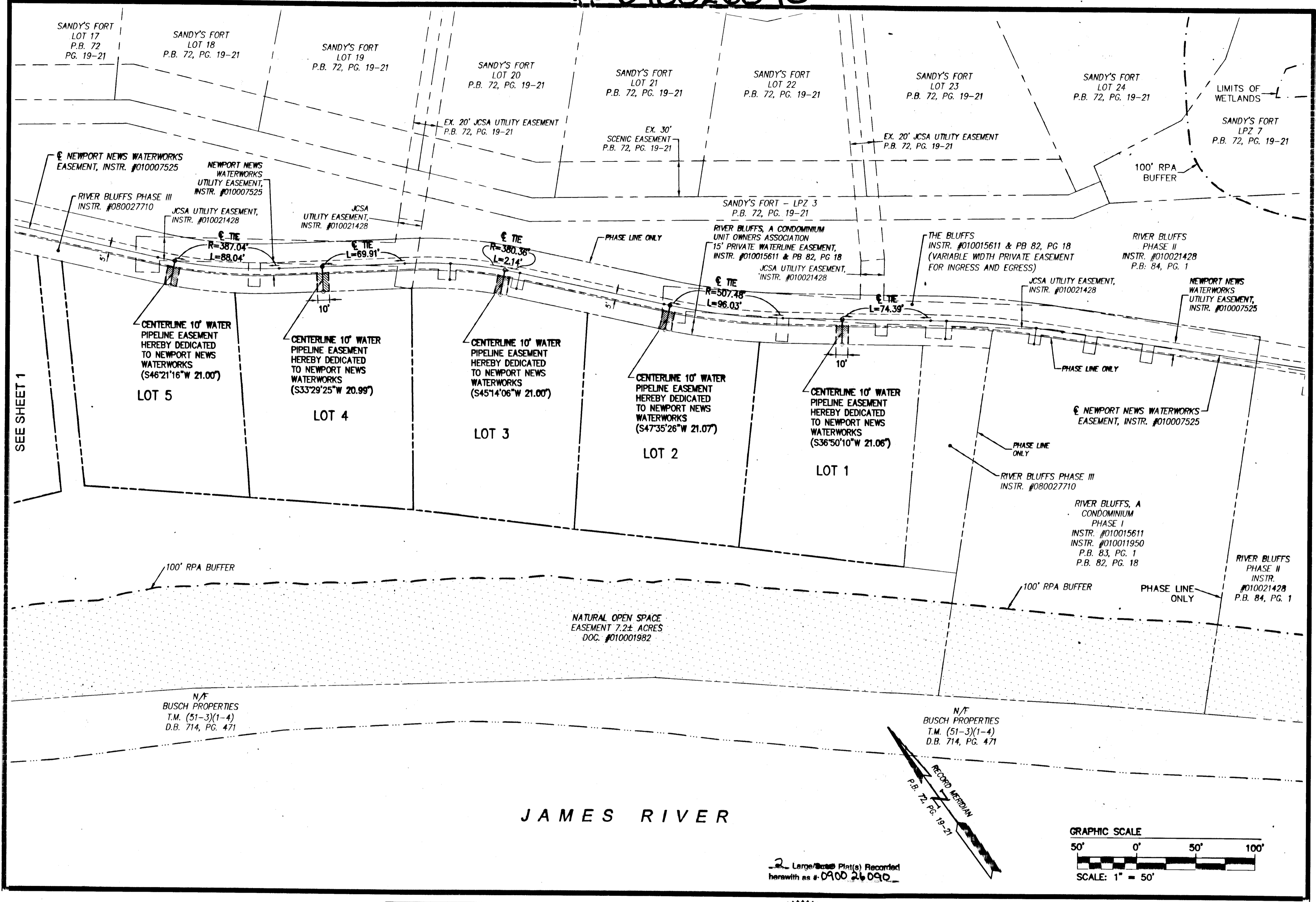
PLAT SHOWING WATERLINE EASEMENT
TO BE CONVEYED TO THE CITY OF NEWPORT NEWS
DEPARTMENT OF PUBLIC UTILITIES
FROM BUSCH PROPERTIES, INC.
RIVER BLUFFS
KINGSMILL ON THE JAMES
ROBERTS DISTRICT JAMES CITY COUNTY VIRGINIA



No.	DATE	REVISION / COMMENT / NOTE	BY

Designed AES	Drawn CMA
Scale 1"=50'	Date 6/18/09
Project No. 7753-8-3	
Drawing No. 1 of 2	

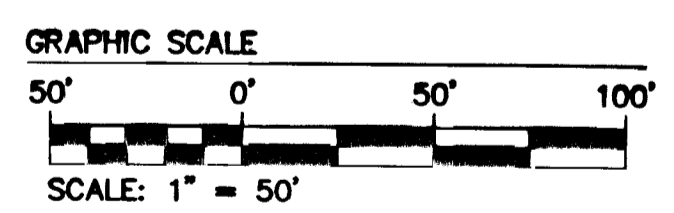
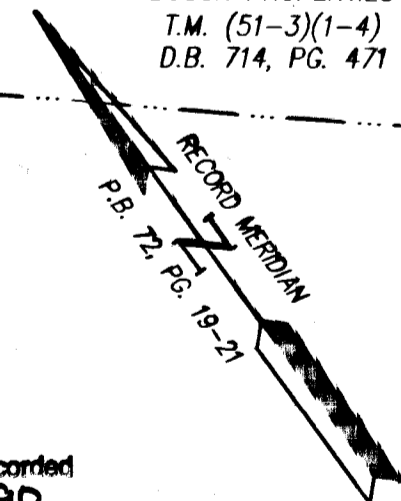
#090026090



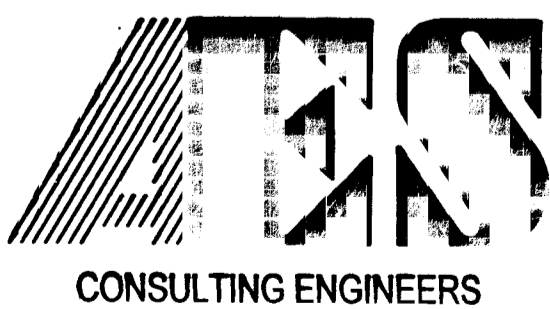
S:\Jobs\1753\08-3-RiverBluffs-SingleFamily.dwg (SurfPlat)\N\WW Easement\753-3-3 NN\WW ESMT Lots 1-9 SH 1-2.dwg, 8/31/2009 9:09:45 AM, stephen.cooke

SEE SHEET 1

JAMES RIVER



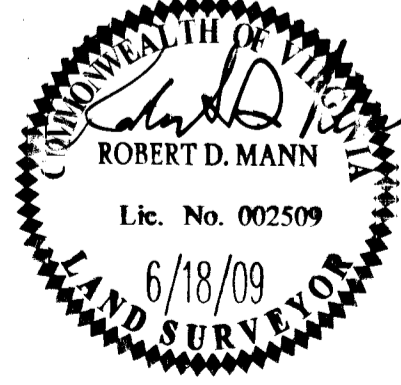
2 Large/Small Plat(s) Recorded herewith as # 0900 26 090



5248 Olde Towne Road, Suite 1
Williamsburg, Virginia 23188
(757) 253-0040
Fax (757) 220-8994

WILLIAMSBURG • RICHMOND • GLOUCESTER • FREDERICKSBURG

PLAT SHOWING WATERLINE EASEMENT
TO BE CONVEYED TO THE CITY OF NEWPORT NEWS
DEPARTMENT OF PUBLIC UTILITIES
FROM BUSCH PROPERTIES, INC.
RIVER BLUFFS
KINGSMILL ON THE JAMES
ROBERTS DISTRICT JAMES CITY COUNTY VIRGINIA



City of Williamsburg & County of James City	
Circuit Court: This PLAT was recorded on	
9-16-2009	
at 1:53 PM, PG. 1	
DOCUMENT # 090026090	
BETSY B. WOOLRIDGE, CLERK	
Betsy B. Woolridge Clerk	
No.	DATE
REVISION / COMMENT / NOTE	
BY	

Designed AES	Drawn CMA
Scale 1"=50'	Date 6/18/09
Project No. 7753-8-3	
Drawing No. 2 of 2	