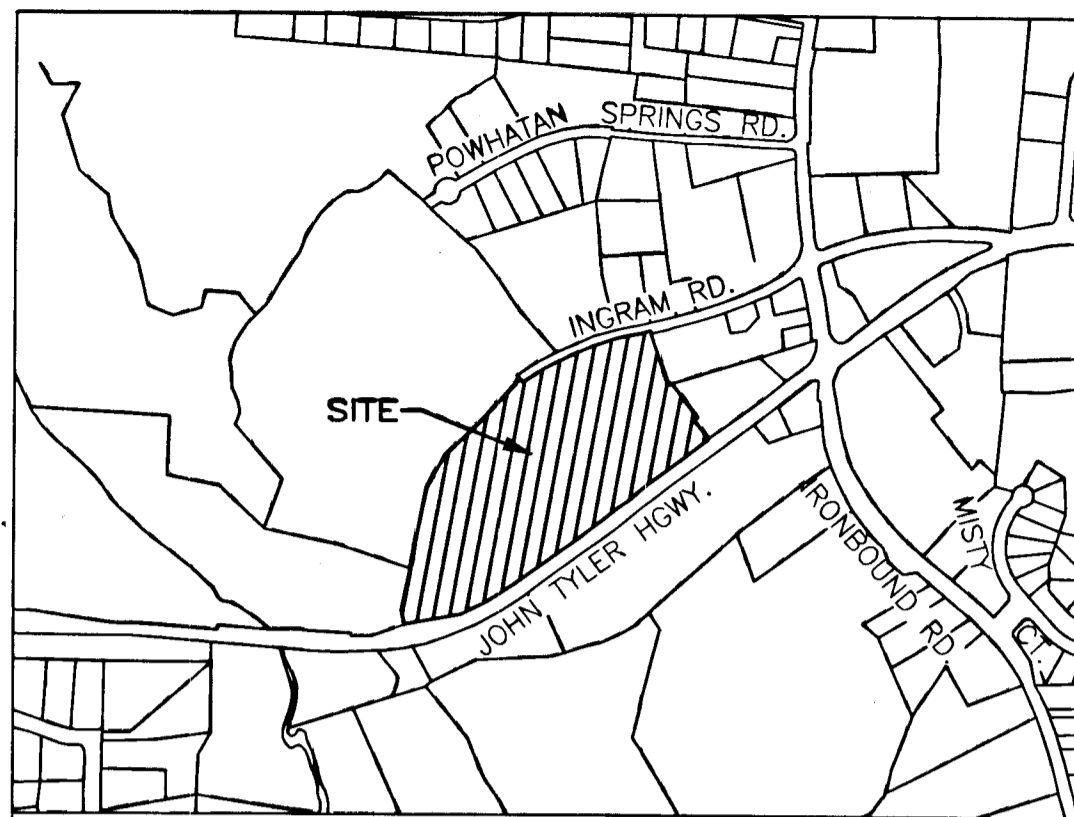


090022560

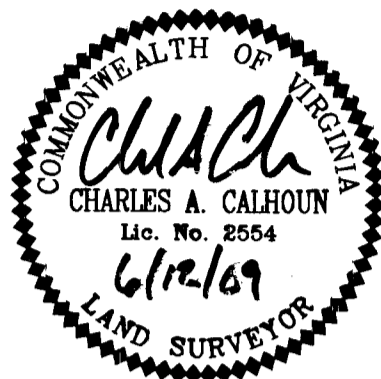


VICINITY MAP - NOT TO SCALE

SURVEYORS CERTIFICATE

I HEREBY CERTIFY THAT THIS PLAT IS ACCURATE AND COMPLIES WITH THE PROVISIONS OF SECTION 55-79.58 (A) OF THE CODE OF VIRGINIA 1950 AS AMENDED.

Charles A. Calhoun
 CHARLES A. CALHOUN LIC.# 2554 DATE 6/12/09



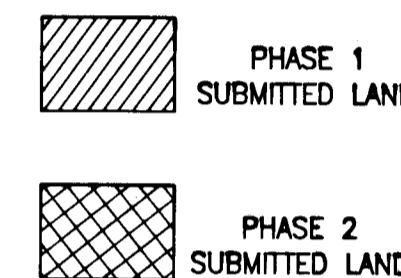
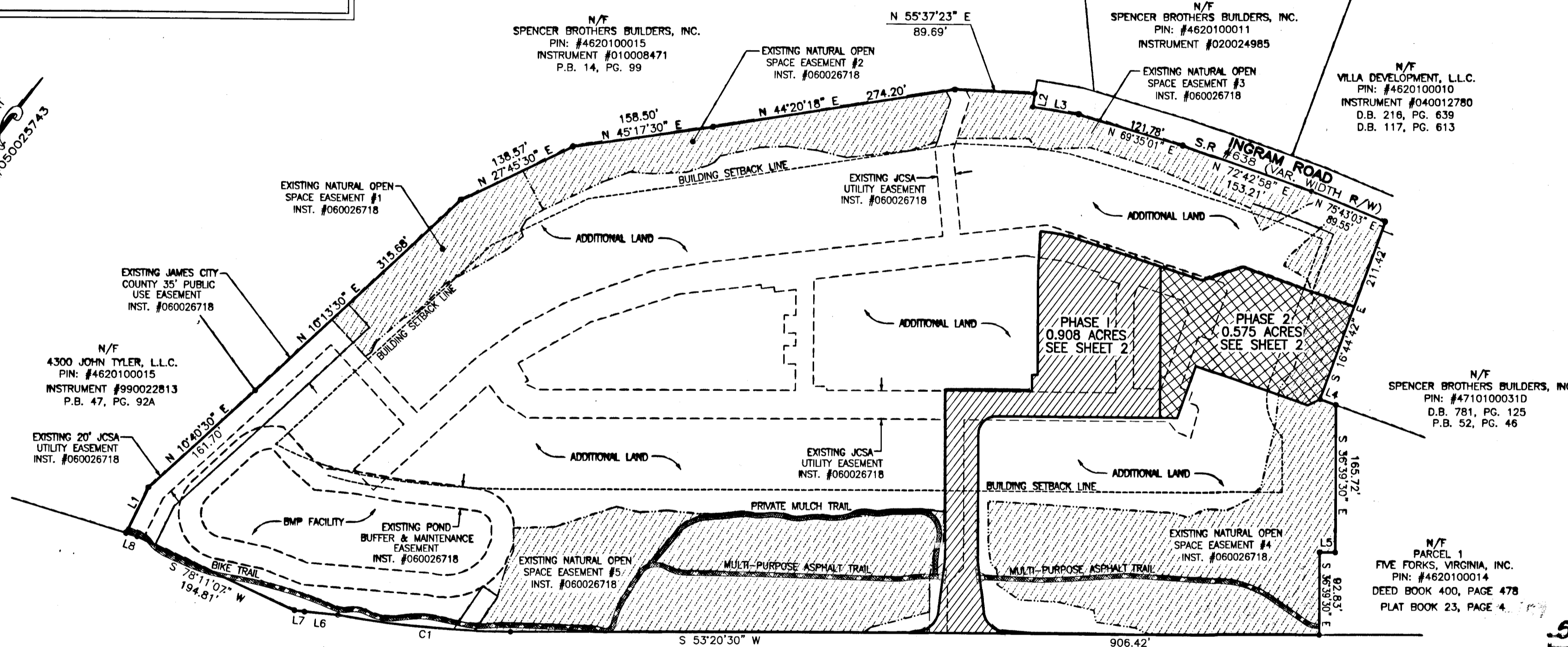
AREA TABLE

PARCEL	SQ. FT.	ACRES
PHASE 1 SUBMITTED LAND	39,547	0.908
PHASE 2 SUBMITTED LAND	25,064	0.575
PREVIOUSLY SUBMITTED LAND	-	-
ADDITIONAL LAND	588,625	13.513
TOTAL	653,236	14.996

PLAT OF
PHASE 1 AND PHASE 2
GOVERNOR'S GROVE AT FIVE FORKS
 A CONDOMINIUM
 LOCATED IN THE BERKELEY DISTRICT
 JAMES CITY COUNTY, VIRGINIA
 DATE: 6/12/09 SCALE: 1" = 100' JOB# 06-460
 SHEET 1 OF 2

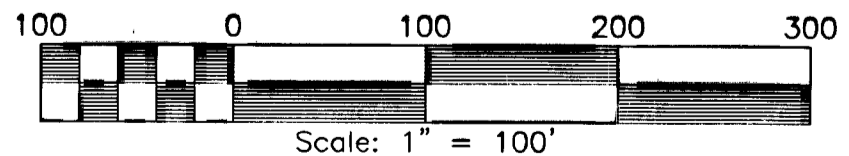
LandTech Resources, Inc.
 Surveying - Engineering - GPS
 205-E Bulfoahs Blvd. Williamsburg, VA 23188
 Phone: (757) 565-1677 Fax: (757) 565-0782
 web: landtechresources.com

RECORD PLAT
 DOC. #090022743



GENERAL NOTES

- THIS PLAT WAS PRODUCED WITHOUT A TITLE REPORT AND MAY NOT REFLECT ALL MATTERS AFFECTING PROPERTY.
- THIS PROPERTY APPEARS TO FALL IN ZONE "X" AS SHOWN ON COMMUNITY PANEL 51095C0205C DATED SEPTEMBER 28, 2007.
- ALL UNITS TO BE SERVED BY PUBLIC WATER AND SEWER.
- ALL LAND AND IMPROVEMENTS OUTSIDE OF BUILDINGS AND WITHIN PHASE LIMITS SHALL BE KNOWN AS COMMON ELEMENT EXCEPT FOR LIMITED COMMON ELEMENTS DESIGNATED ON PLAT AND BUILDING PLANS.
- THIS PARCEL OF LAND WAS CONVEYED TO GOVERNOR'S GROVE AT FIVE FORKS, L.L.C. BY DEED RECORDED IN INSTRUMENT #070006512.
- THE STREETS WITHIN THIS CONDOMINIUM SHALL BE KNOWN AS COMMON ELEMENT AND NOT A PUBLIC DEDICATED RIGHT-OF-WAY.
- PHASE 1 AND 2 IS SUBMITTED LAND. THE REMAINING PROPERTY IS ADDITIONAL LAND. ALL ADDITIONAL LAND AND ALL COMMON ELEMENTS ARE WITHDRAWABLE LAND.
- PROFFERED COVENANTS, RESTRICTIONS, AND CONDITIONS AFFECTING THIS PROPERTY HAVE BEEN RECORDED AS INST. #050019045.
- THE LOCATION OF THE PRIVATE MULCH TRAIL AND THE ASPHALT MULTI-PURPOSE TRAIL ARE APPROXIMATE ONLY AND SUBJECT TO CHANGE.



JOHN TYLER HIGHWAY
 STATE ROUTE #5
 (VARIABLE WIDTH PUBLIC R/W)

City of Williamsburg & County of James City
 Circuit Court: This PLAT was recorded on
 16 August 2009
 at 3:59 AM/PM, PG. -
 DOCUMENT # 090022560
 BETSY B. WOOLRIDGE, CLERK
Betsy B. Woolridge Clerk

CURVE TABLE

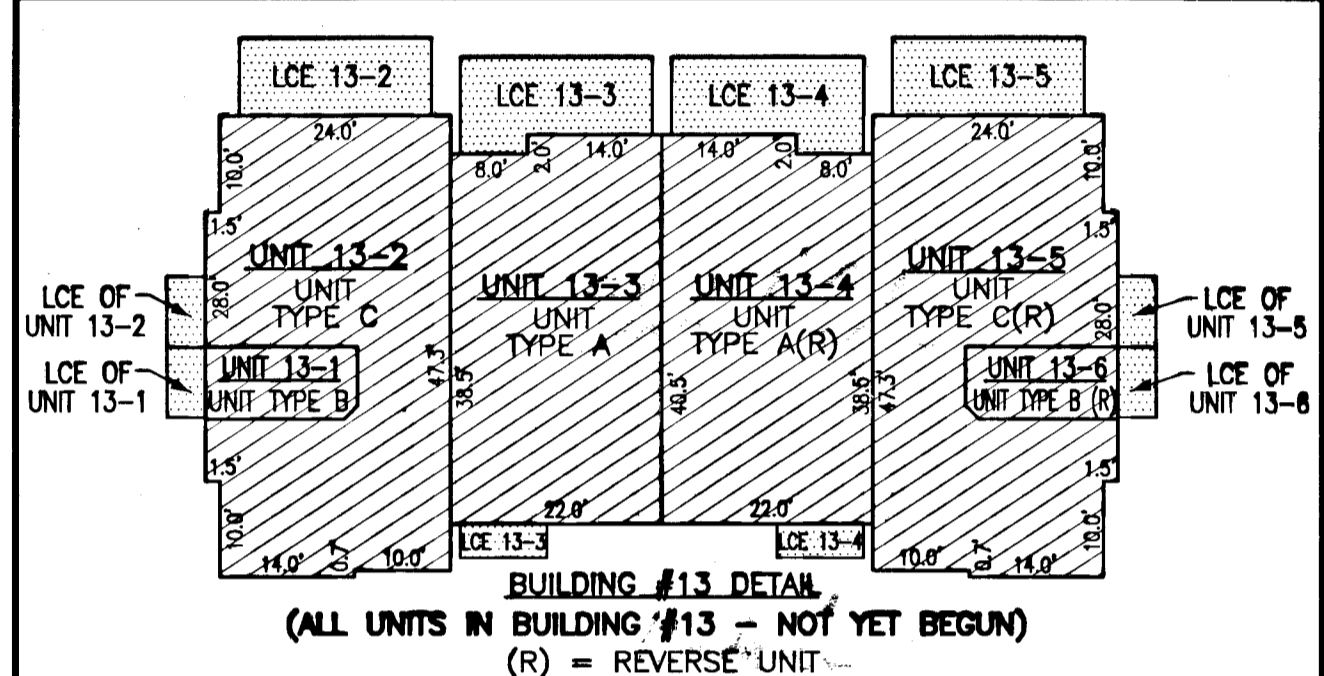
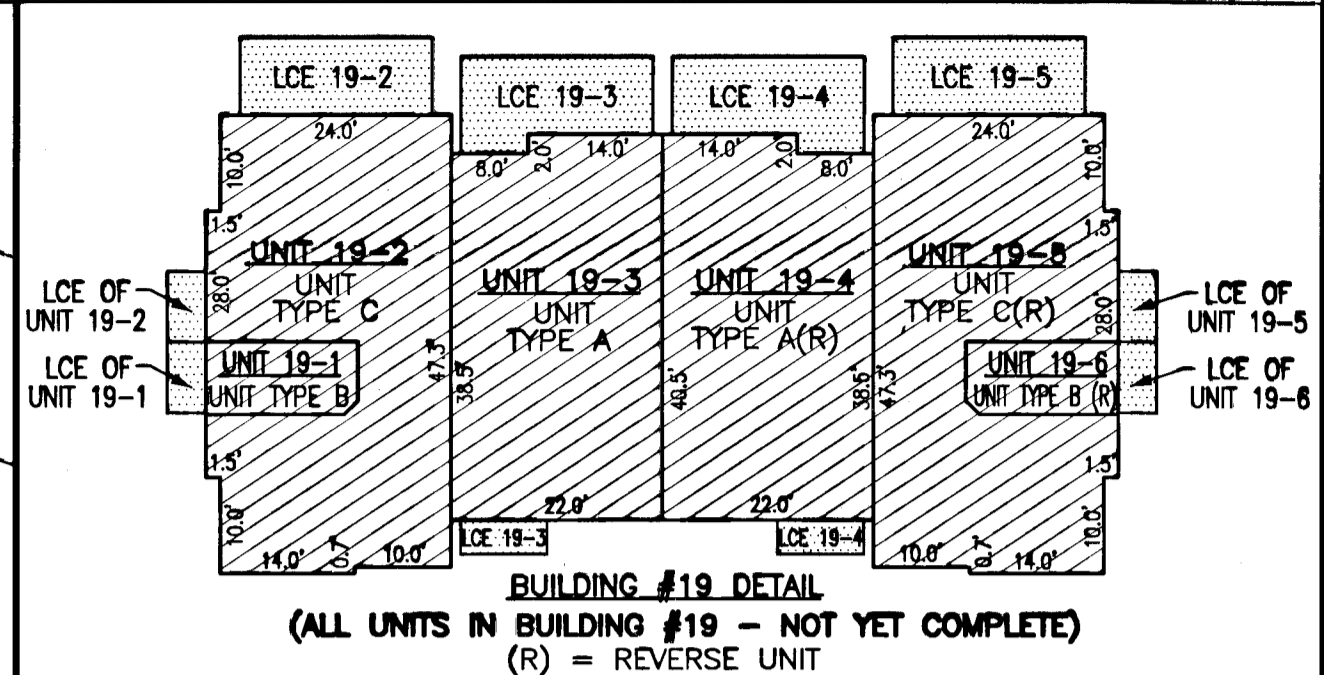
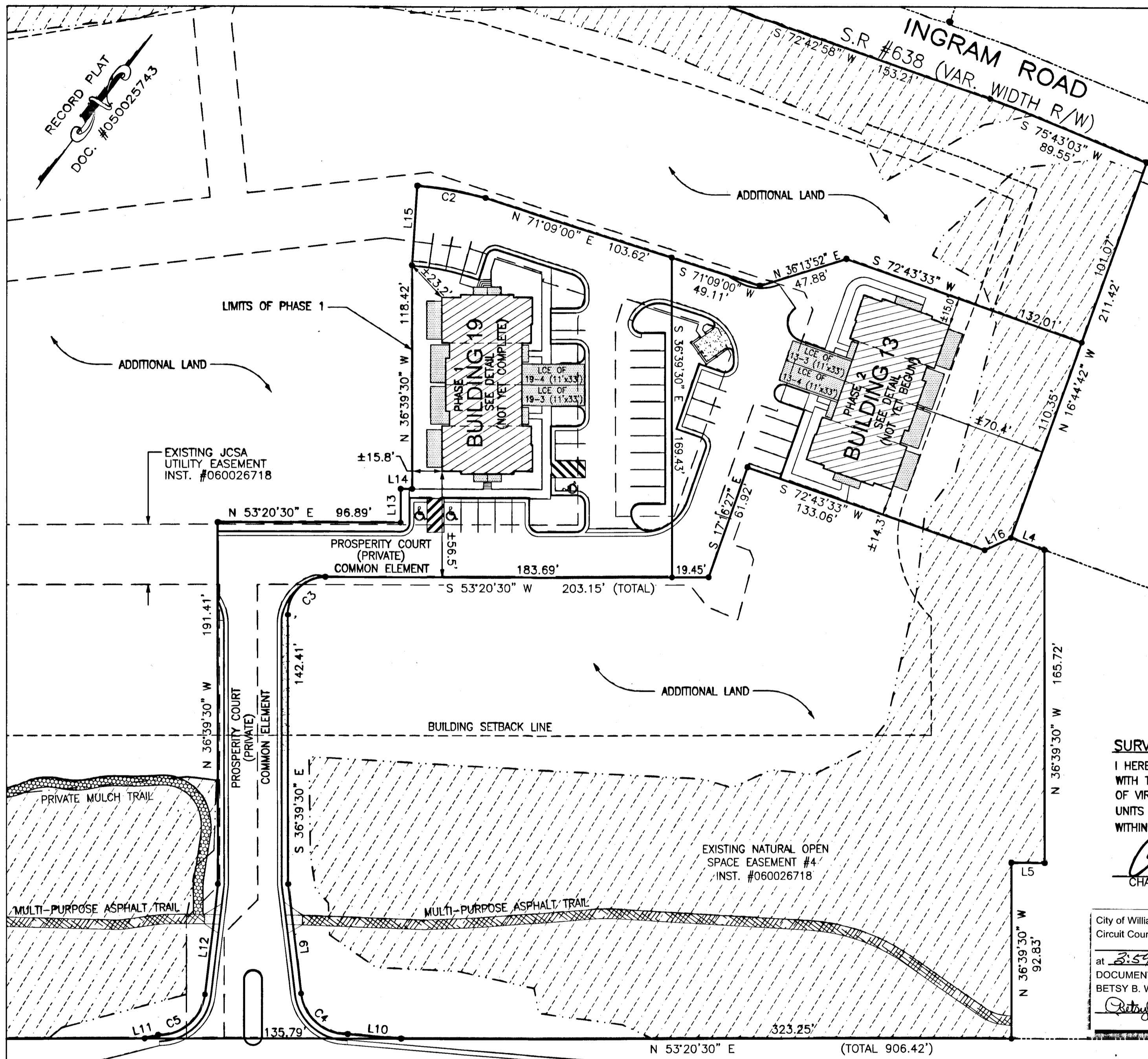
NO.	DELTA	CHORD BEARING	TANGENT	RADIUS	ARC	CHORD
C1	10°00'21"	S 58°20'41" W	97.69'	1116.00'	194.89'	194.64'
C2	11°06'17"	N 63°13'01" E	18.47'	190.00'	36.82'	36.77'
C3	90°00'00"	S 08°20'30" W	20.00'	20.00'	31.42'	28.28'
C4	84°00'29"	S 85°30'40" E	22.07'	24.50'	35.92'	32.79'
C5	84°19'24"	N 12°20'41" E	22.18'	24.50'	36.06'	32.89'

LINE TABLE

NO.	DIRECTION	DISTANCE
L1	N 10°44'30" W	57.40'
L2	S 27°48'08" E	15.00'
L3	N 62°11'52" E	52.25'
L4	N 73°15'18" E	18.75'
L5	S 53°20'30" W	17.63'
L6	S 58°14'37" W	37.63'
L7	S 60°24'36" W	11.43'
L8	S 70°12'23" W	12.96'
L9	S 43°30'04" E	58.08'
L10	N 58°05'32" E	28.38'
L11	N 39°07'58" E	7.31'
L12	N 29°48'56" W	58.64'
L13	N 36°39'30" W	18.00'
L14	N 53°25'22" E	6.19'
L15	N 32°56'08" W	42.10'
L16	S 27°43'33" W	15.46'

5 Large/Small Plat(s) Recorded
 herewith as # 090022560

090022560



INDICATES LIMITED COMMON ELEMENT

INDICATES UNIT AREA

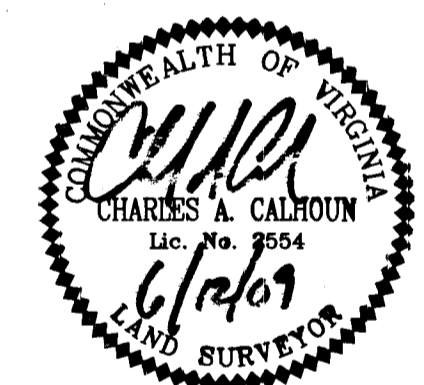
INDICATES COMMON ELEMENT

*LCE=LIMITED COMMON ELEMENT

SURVEYORS CERTIFICATE

I HEREBY CERTIFY THAT THIS PLAT IS ACCURATE AND COMPLIES WITH THE PROVISIONS OF SECTION 55-79.58 (A) OF THE CODE OF VIRGINIA 1950 AS AMENDED AND I FURTHER CERTIFY THAT UNITS WITHIN BUILDING 19 ARE NOT YET COMPLETE AND UNITS WITHIN BUILDING 13 HAVE NOT YET BEGUN.

Charles A. Calhoun
CHARLES A. CALHOUN LIC.# 2554 DATE 6/12/09



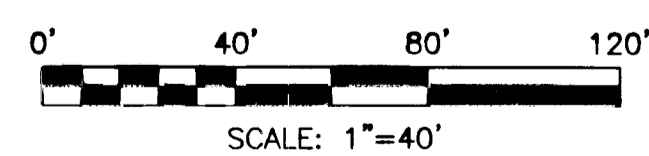
City of Williamsburg & County of James City Circuit Court: This PLAT was recorded on 6 August 2009 at 3:59 AM/PM, PG. DOCUMENT # 090022560 Betsy B. Woolridge, Clerk

5 Large/Small Plat(s) Recorded herewith as # 090022560

PLAT OF PHASE 1 AND PHASE 2 GOVERNOR'S GROVE AT FIVE FORKS A CONDOMINIUM LOCATED IN THE BERKELEY DISTRICT JAMES CITY COUNTY, VIRGINIA

DATE: 6/12/09 SCALE: 1" = 40' JOB# 06-460 SHEET 2 OF 2

JOHN TYLER HIGHWAY STATE ROUTE #5 (VARIABLE WIDTH PUBLIC R/W)



UNIT NUMBER	UNIT TYPE	STREET ADDRESS	PARCEL ID#
19-1	B	1901 PROSPERITY CT.	4622001901
19-2	C	1902 PROSPERITY CT.	4622001902
19-3	A	1903 PROSPERITY CT.	4622001903
19-4	A-(R)	1904 PROSPERITY CT.	4622001904
19-5	C-(R)	1905 PROSPERITY CT.	4622001905
19-6	B-(R)	1906 PROSPERITY CT.	4622001906

UNIT NUMBER	UNIT TYPE	STREET ADDRESS	PARCEL ID#
13-1	B	1301 PROSPERITY CT.	4712101301
13-2	C	1302 PROSPERITY CT.	4712101302
13-3	A	1303 PROSPERITY CT.	4712101303
13-4	A-(R)	1304 PROSPERITY CT.	4712101304
13-5	C-(R)	1305 PROSPERITY CT.	4712101305
13-6	B-(R)	1306 PROSPERITY CT.	4712101306

LardTech Resources, Inc.
Surveying • Engineering • GPS

205-E Bulifants Blvd. Williamsburg, VA 23188
Phone: (757) 565-1677 Fax: (757) 565-0782
web: landtechresources.com

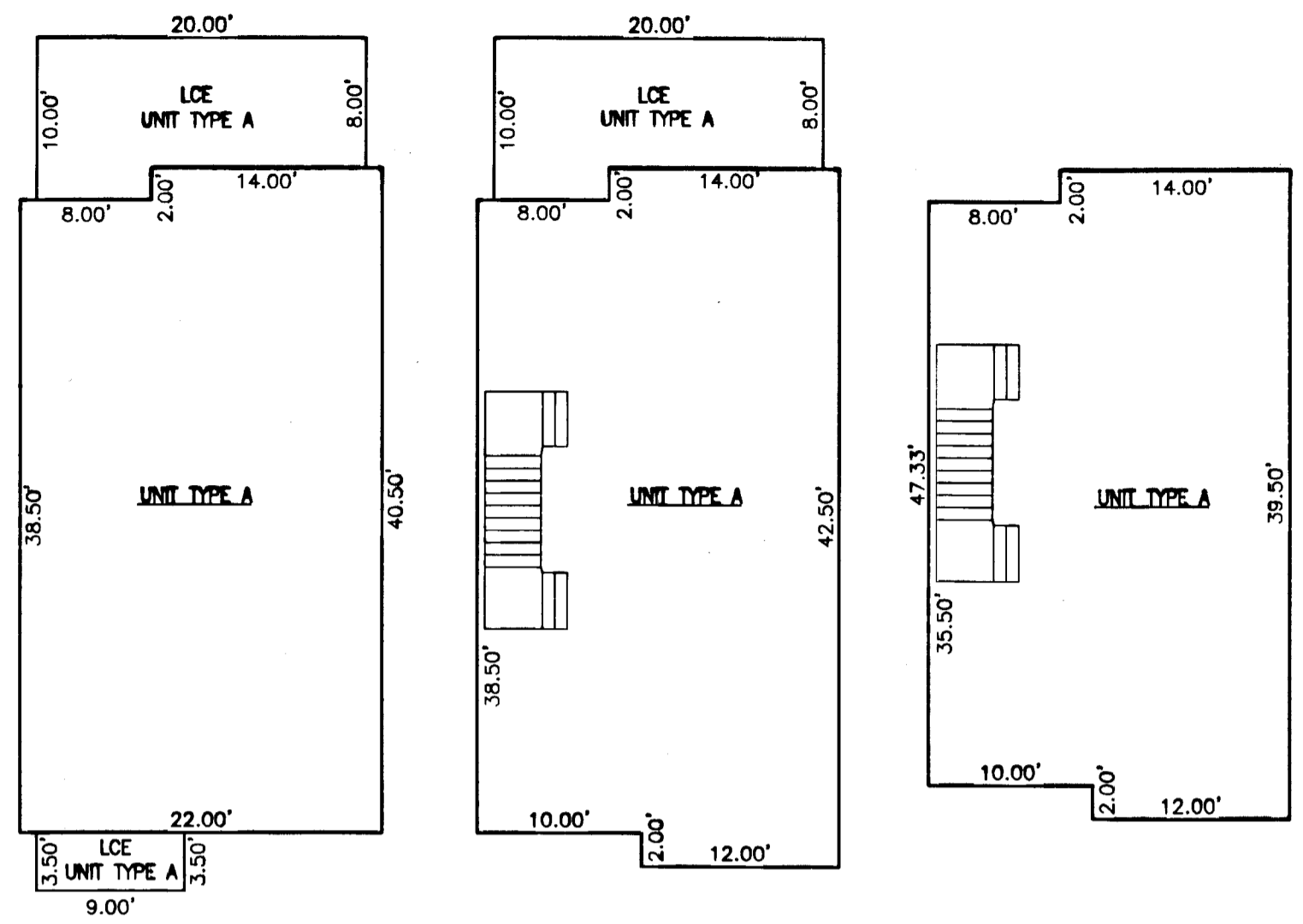
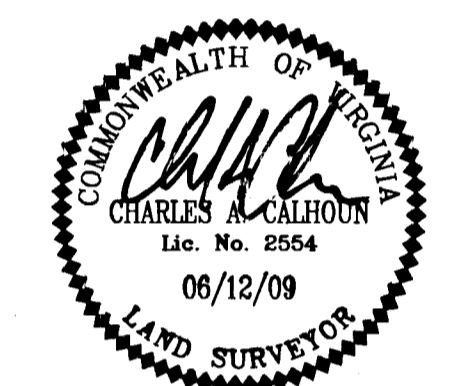
090022560

PLAN OF
GOVERNOR'S GROVE AT FIVE FORKS
 A CONDOMINIUM
 LOCATED IN THE BERKELEY DISTRICT
 JAMES CITY COUNTY, VIRGINIA
 DATE: 6/12/09 SCALE: 1" = 10' JOB# 06-460
 SHEET 1 OF 3

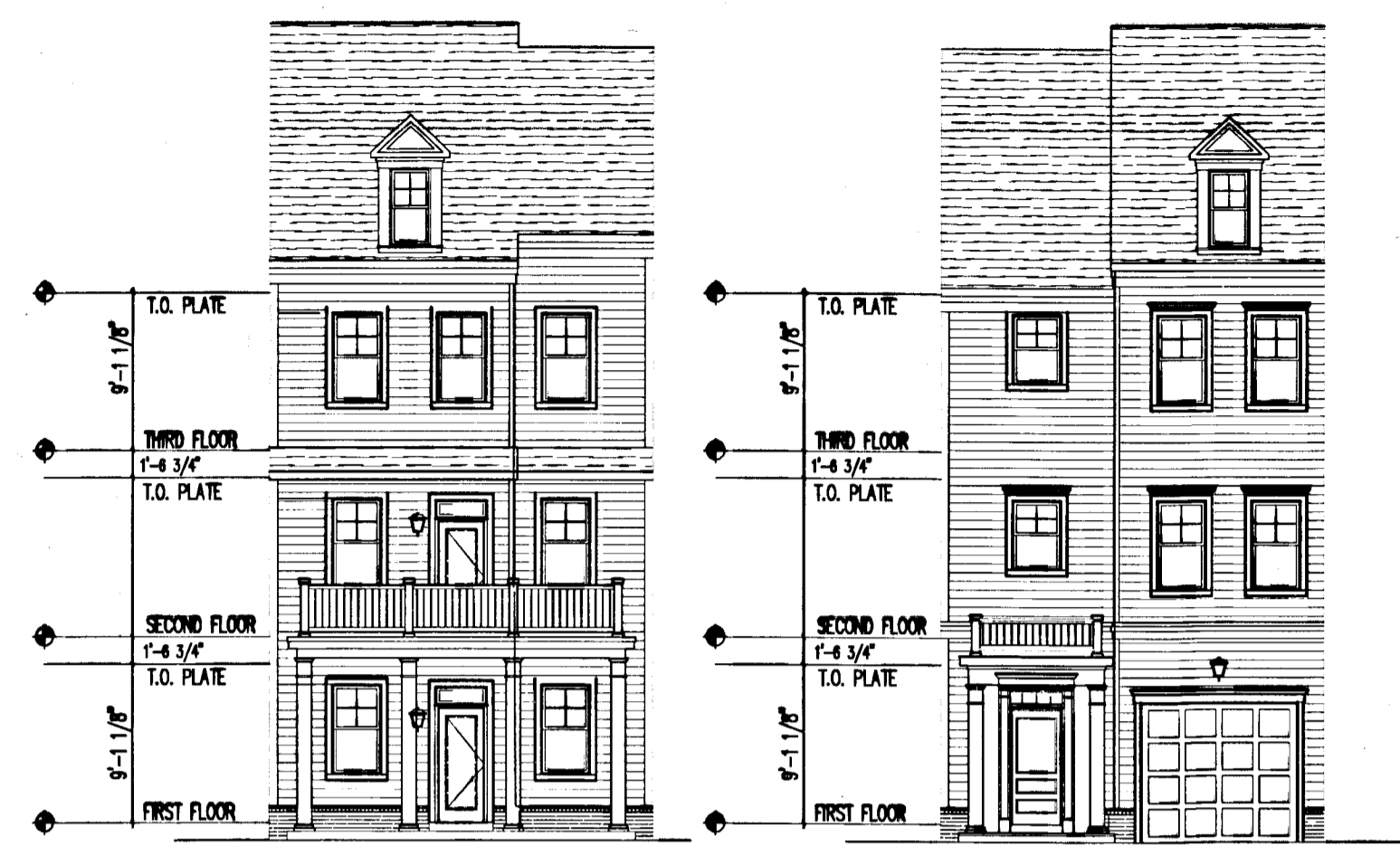
LandTech Resources, Inc.
 Surveying - Engineering - GPS
 205-E Bulifants Blvd., Williamsburg, VA 23188
 Phone: (757) 565-1677 Fax: (757) 565-0782
 web: landtechresources.com

SURVEYORS CERTIFICATE
 I HEREBY CERTIFY THAT THIS PLAN IS ACCURATE AND COMPLIES WITH THE PROVISIONS OF SECTION 55-79.58 (B) OF THE CODE OF VIRGINIA 1950 AS AMENDED.

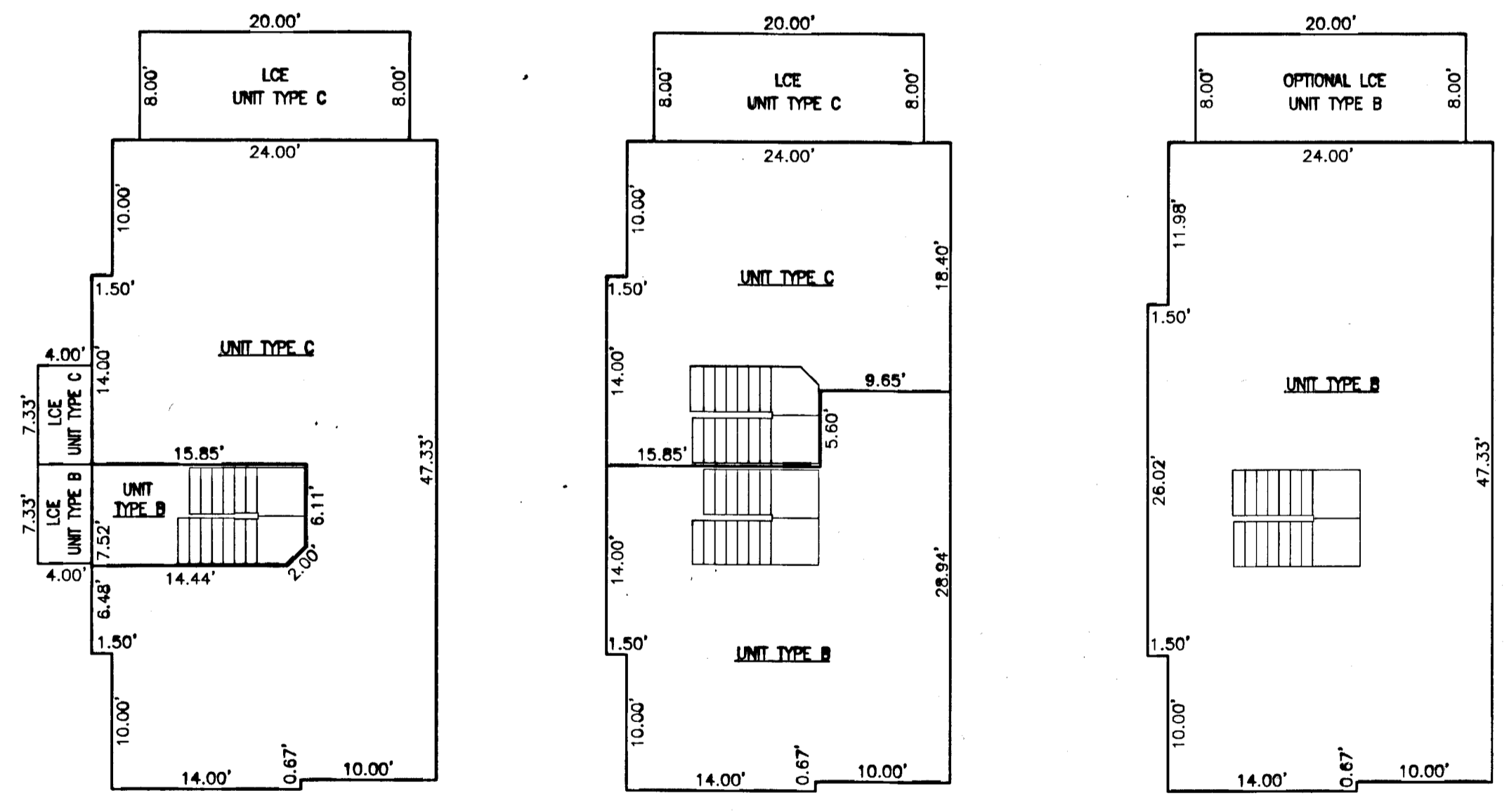
SIGNED: *Charles A. Calhoun*
 CHARLES A. CALHOUN, L.S. #2554



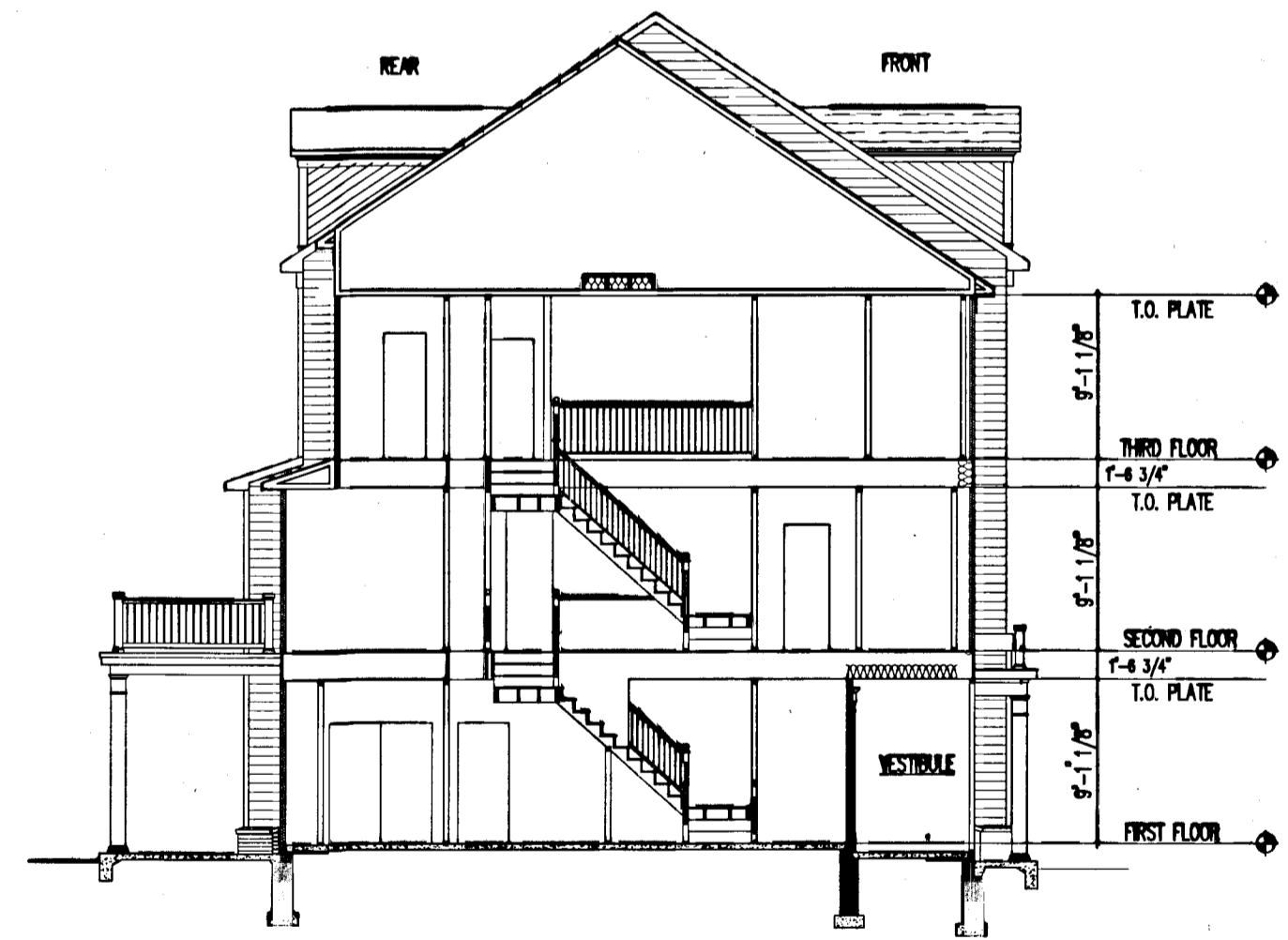
UNIT TYPE A FIRST FLOOR PLAN UNIT TYPE A SECOND FLOOR PLAN UNIT TYPE A THIRD FLOOR PLAN



UNIT TYPE A REAR ELEVATION UNIT TYPE A FRONT ELEVATION



UNIT TYPES B & C FIRST FLOOR PLAN UNIT TYPES B & C SECOND FLOOR PLAN UNIT TYPE B THIRD FLOOR PLAN



UNIT TYPE A BUILDING SECTION

5 Large/Small Plat(s) Recorded hereon as # 090022560

City of Williamsburg & County of James City
 Circuit Court: This PLAT was recorded on
 at 3:59 AM/PM, PB PG
 DOCUMENT # 090022560
 BETSY B. WOOLRIDGE, CLERK
Betsy Woolridge Clerk

*LCE=LIMITED COMMON ELEMENT

090022560

PLAN OF
GOVERNOR'S GROVE AT FIVE FORKS
A CONDOMINIUM
LOCATED IN THE BERKELEY DISTRICT
JAMES CITY COUNTY, VIRGINIA

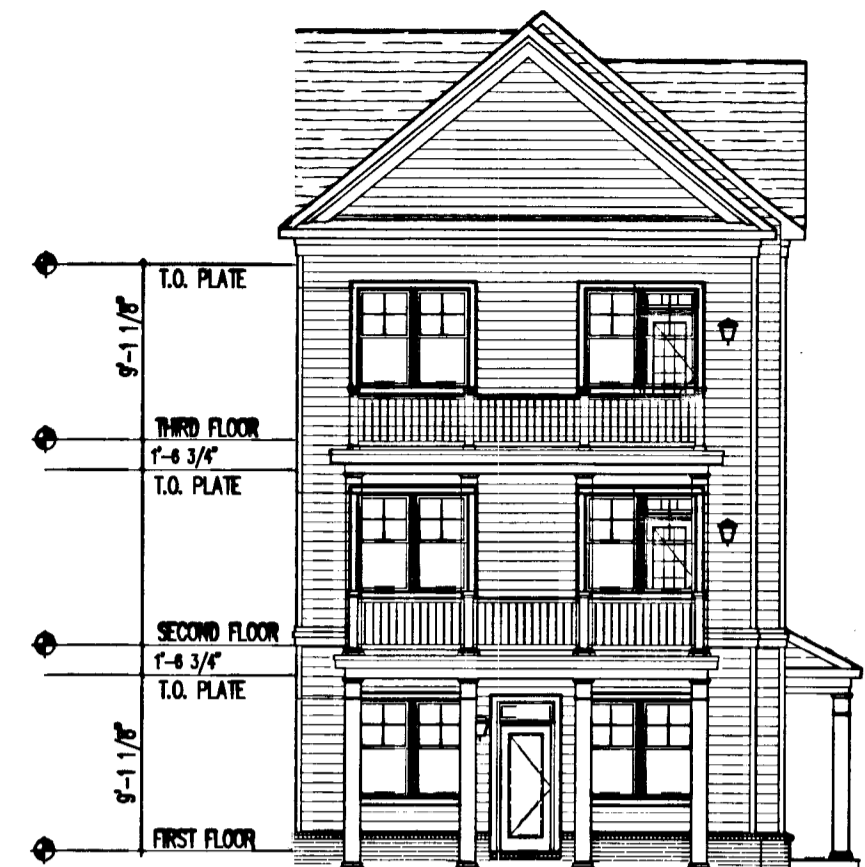
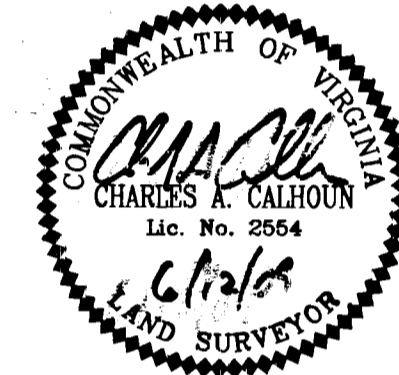
DATE: 6/12/09 SCALE: 1" = 10' JOB# 06-460
SHEET 2 OF 3

LandTech
Resources, Inc.
Surveying • Engineering • GPS
205-E Bulfinch Blvd., Williamsburg, VA 23188
Phone: (757) 565-1677 Fax: (757) 565-0782
web: landtechresources.com

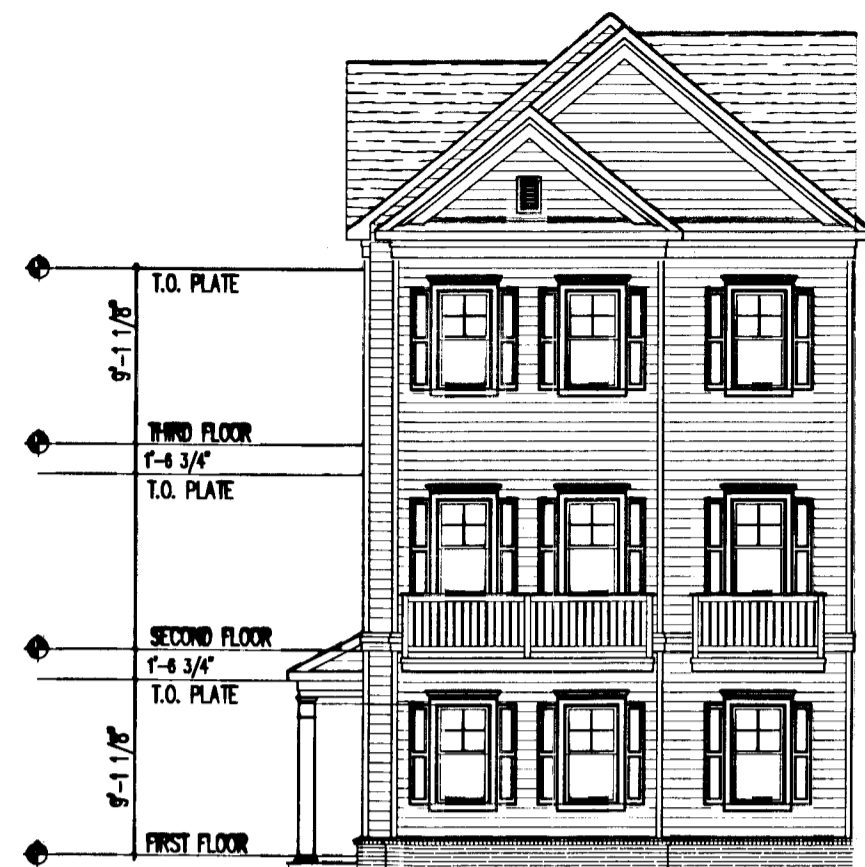
SURVEYORS CERTIFICATE

I HEREBY CERTIFY THAT THIS PLAN IS ACCURATE AND COMPLIES WITH THE PROVISIONS OF SECTION 55-79.58 (B) OF THE CODE OF VIRGINIA 1950 AS AMENDED.

SIGNED: *Charles A. Calhoun*
CHARLES A. CALHOUN, L.S. #2554



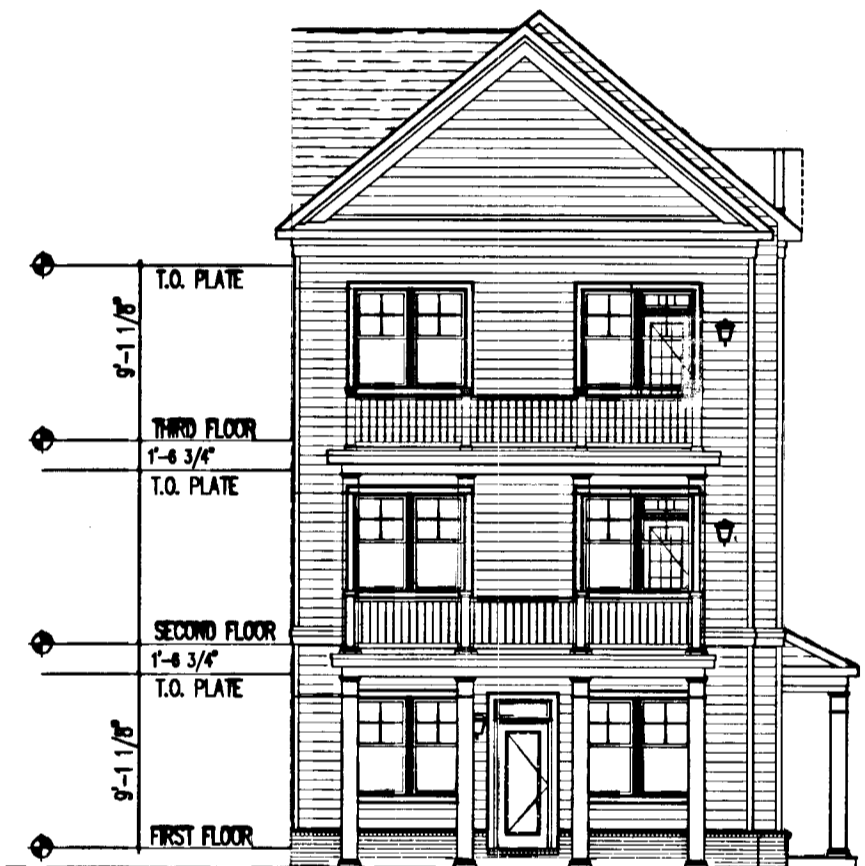
UNIT TYPES B-C
REAR ELEVATION TYPE 3



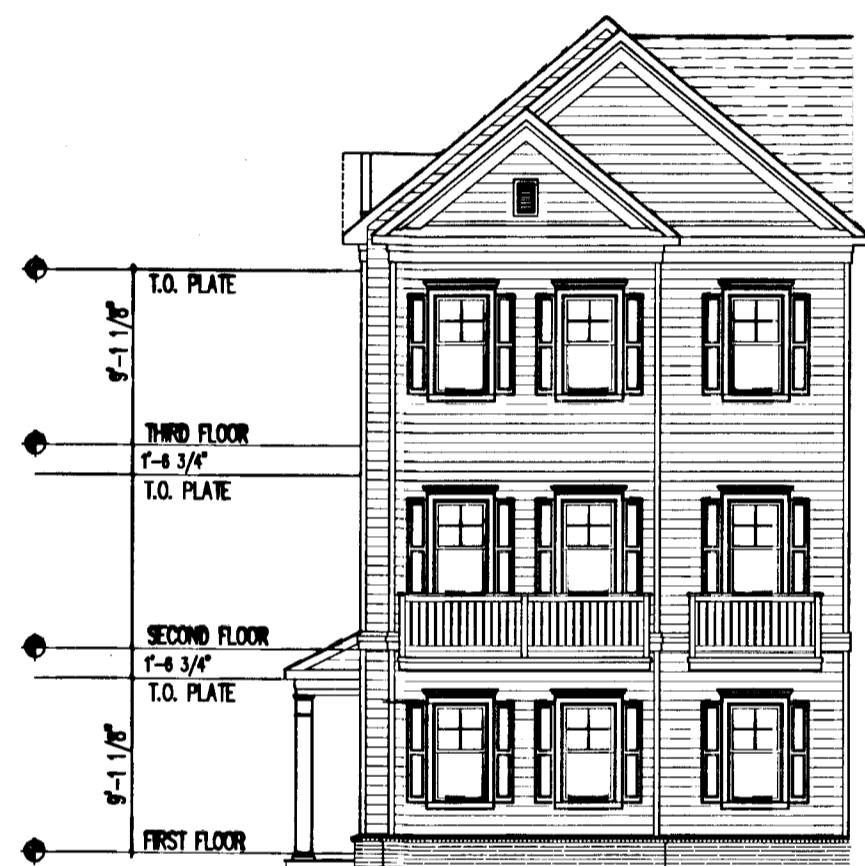
UNIT TYPES B-C
FRONT ELEVATION TYPE 3



UNIT TYPES B-C
SIDE ELEVATION TYPE 3



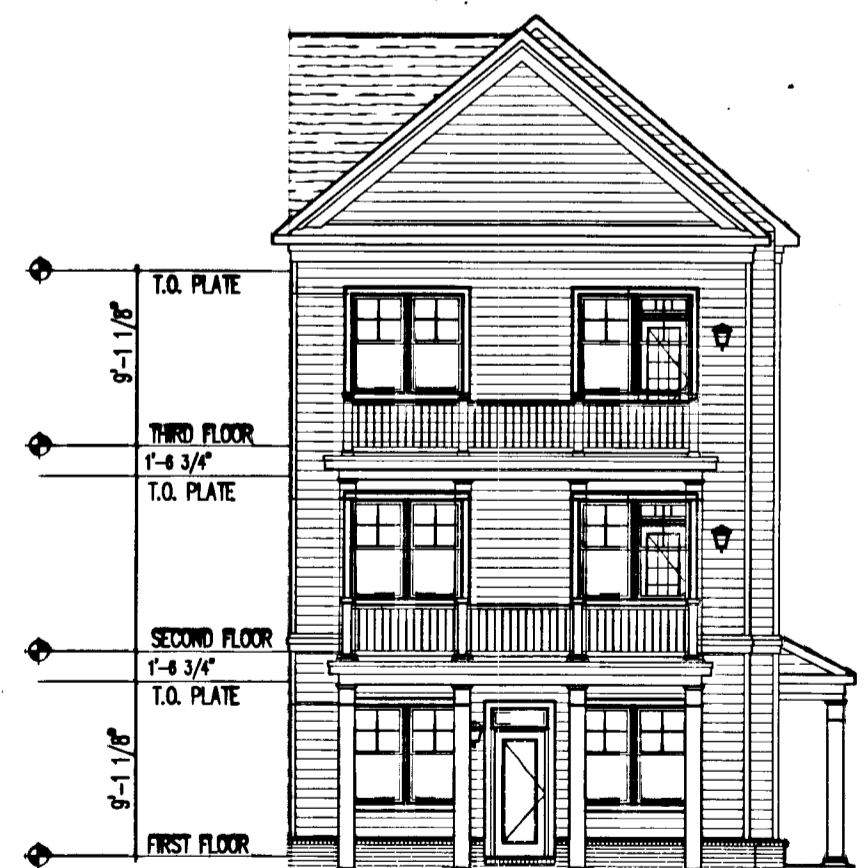
UNIT TYPES B-C
REAR ELEVATION TYPE 2



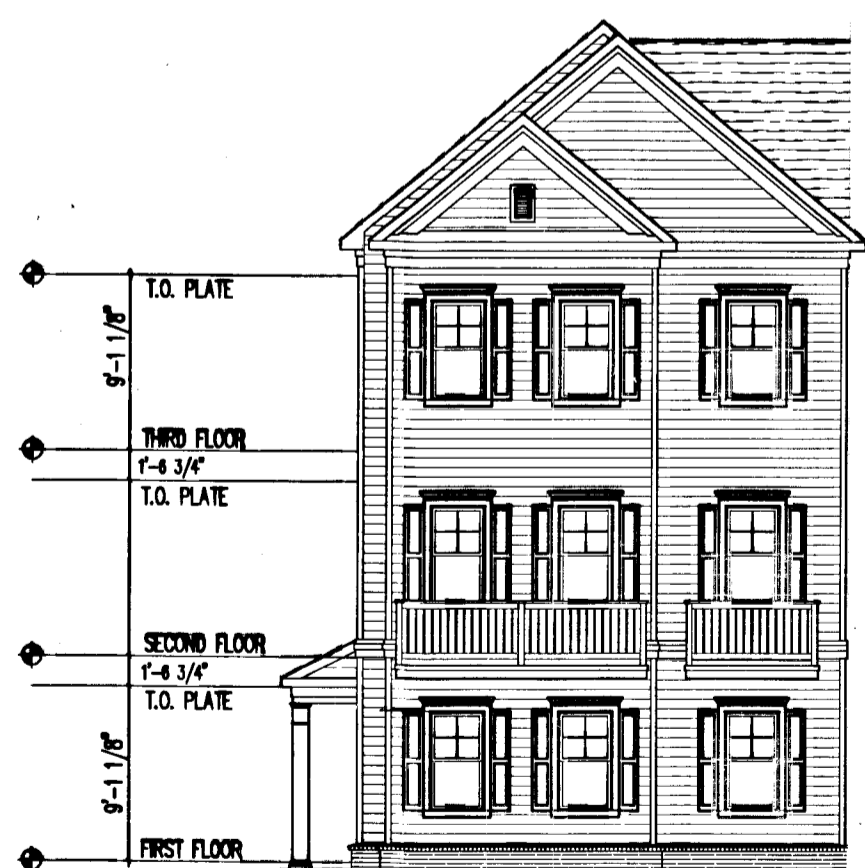
UNIT TYPES B-C
FRONT ELEVATION TYPE 2



UNIT TYPES B-C
SIDE ELEVATION TYPE 2



UNIT TYPES B-C
REAR ELEVATION TYPE 1



UNIT TYPES B-C
FRONT ELEVATION TYPE 1



UNIT TYPES B-C
SIDE ELEVATION TYPE 1

5 Large/Small Plats Recorded
herewith as # 090022560

City of Williamsburg & County of James City
Circuit Court: This PLAT was recorded on
6 August 2009
at 3:59 AM/PM, PB PG
DOCUMENT # 090022560
BETSY B. WOOLRIDGE, CLERK
Betsy B. Woolridge Clerk

*LCE=LIMITED COMMON ELEMENT

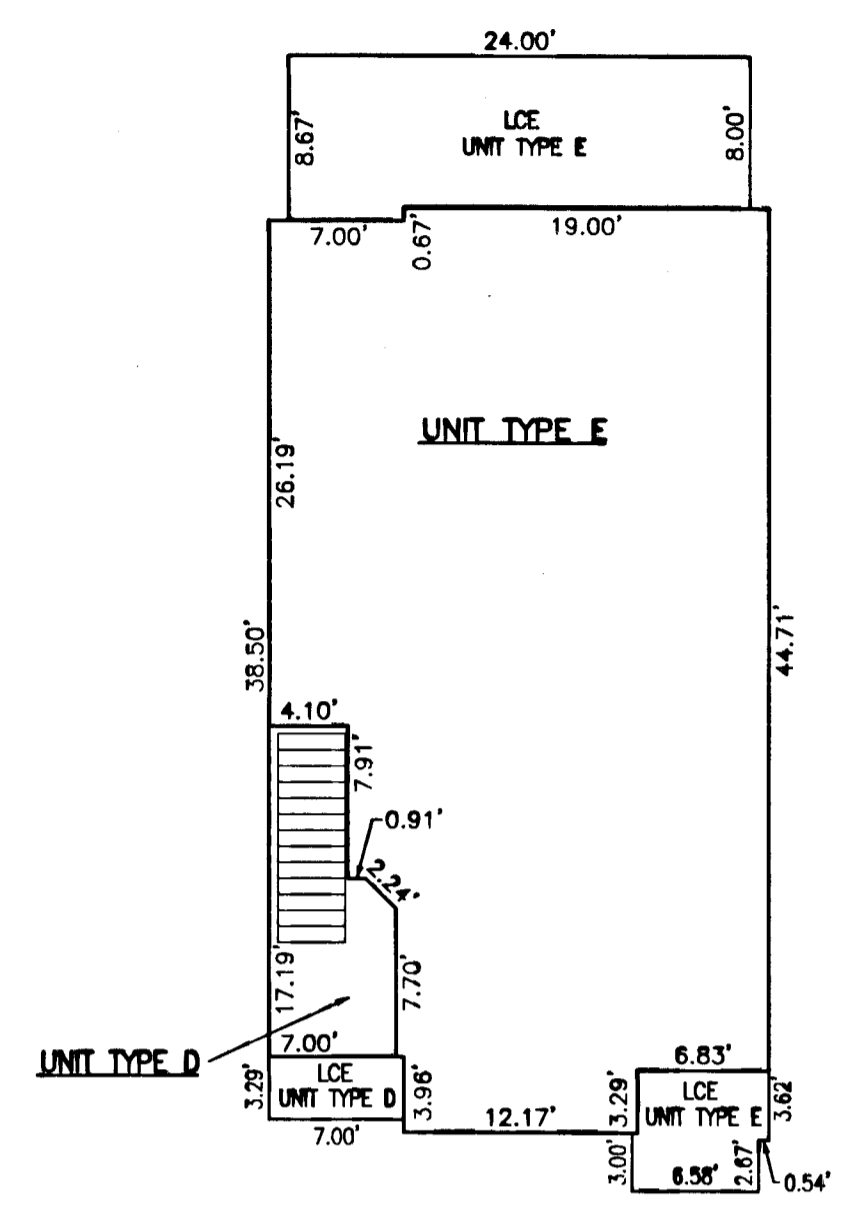
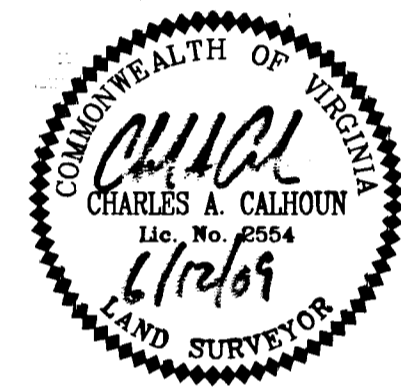
090022560

PLAN OF
GOVERNOR'S GROVE AT FIVE FORKS
 A CONDOMINIUM
 LOCATED IN THE BERKELEY DISTRICT
 AMES CITY COUNTY, VIRGINIA
 DATE: 6/12/09 SCALE: 1" = 10' JOB# 06-460
 SHEET 3 OF 3

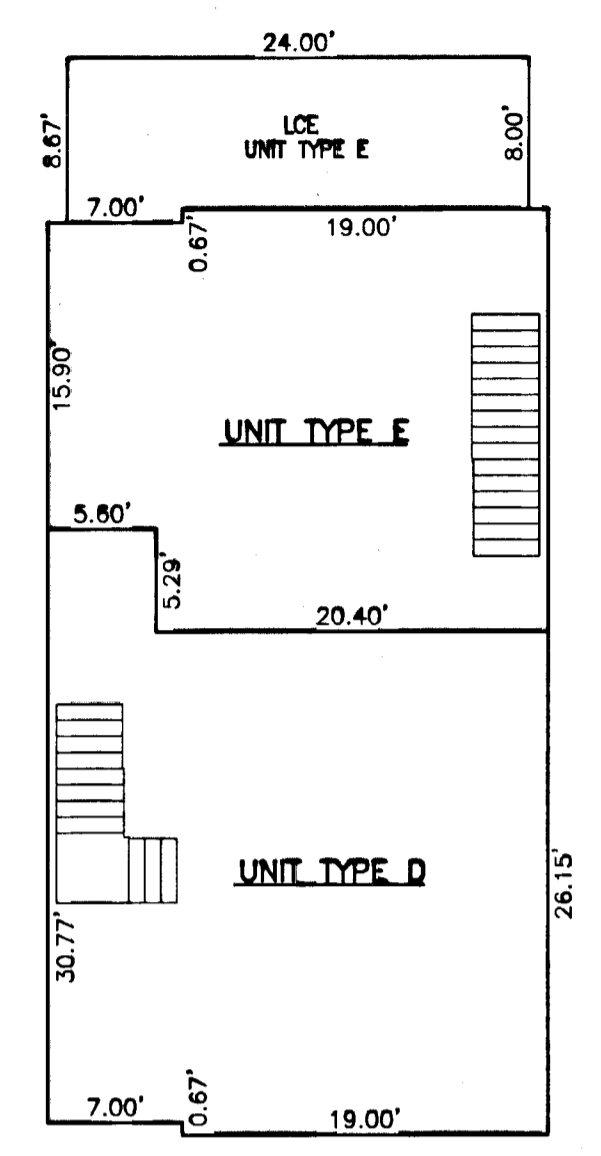
LandTech
Resources, Inc.
 Surveying • Engineering • GPS
 205-E Bulfinch Blvd., Williamsburg, VA 23188
 Phone: (757) 565-1677 Fax: (757) 565-0782
 web: landtechresources.com

SURVEYORS CERTIFICATE
 I HEREBY CERTIFY THAT THIS PLAN IS ACCURATE AND COMPLIES
 WITH THE PROVISIONS OF SECTION 55-79.58 (B) OF THE CODE
 OF VIRGINIA 1950 AS AMENDED.

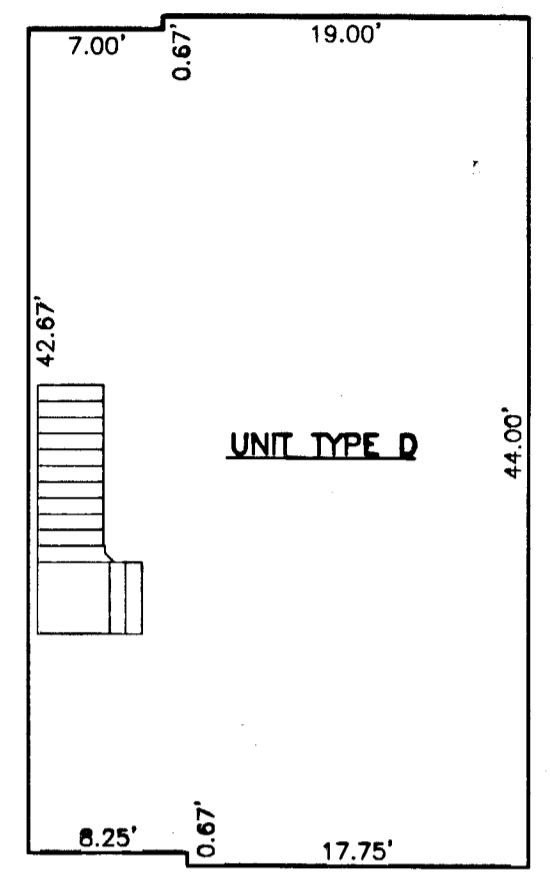
SIGNED: *Charles A. Calhoun*
 CHARLES A. CALHOUN, L.S. #2554



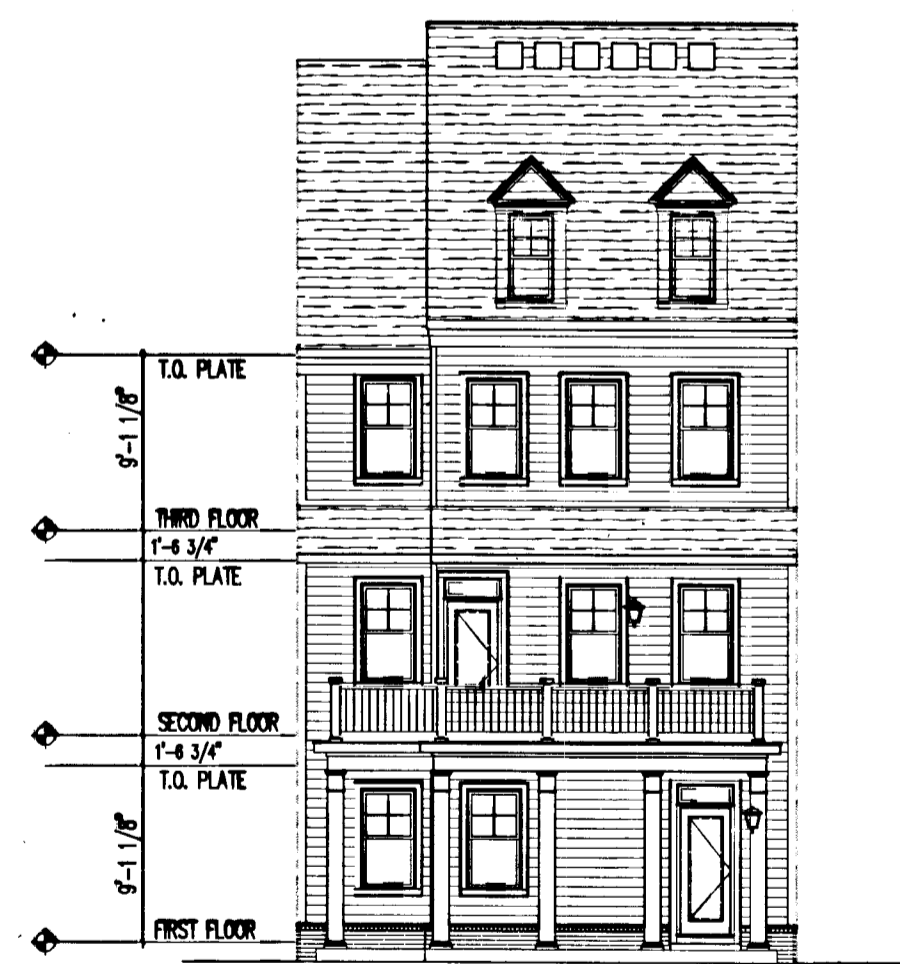
UNIT TYPES D & E
 FIRST FLOOR PLAN



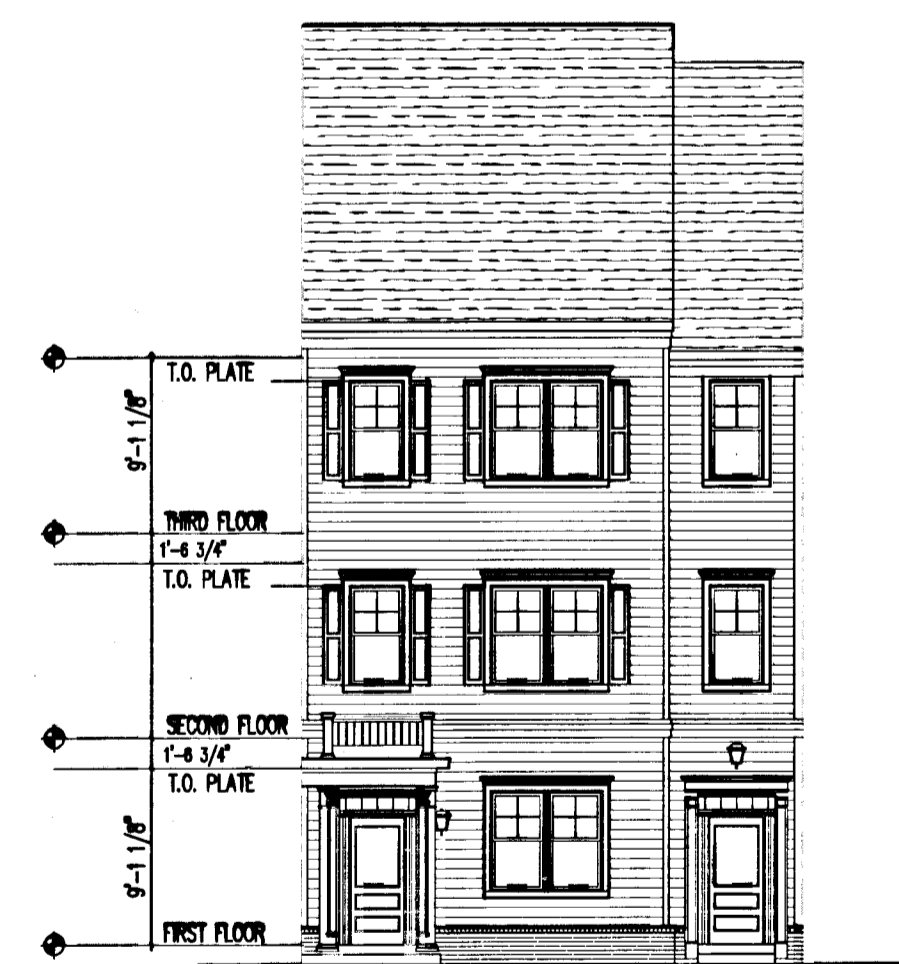
UNIT TYPES D & E
 SECOND FLOOR PLAN



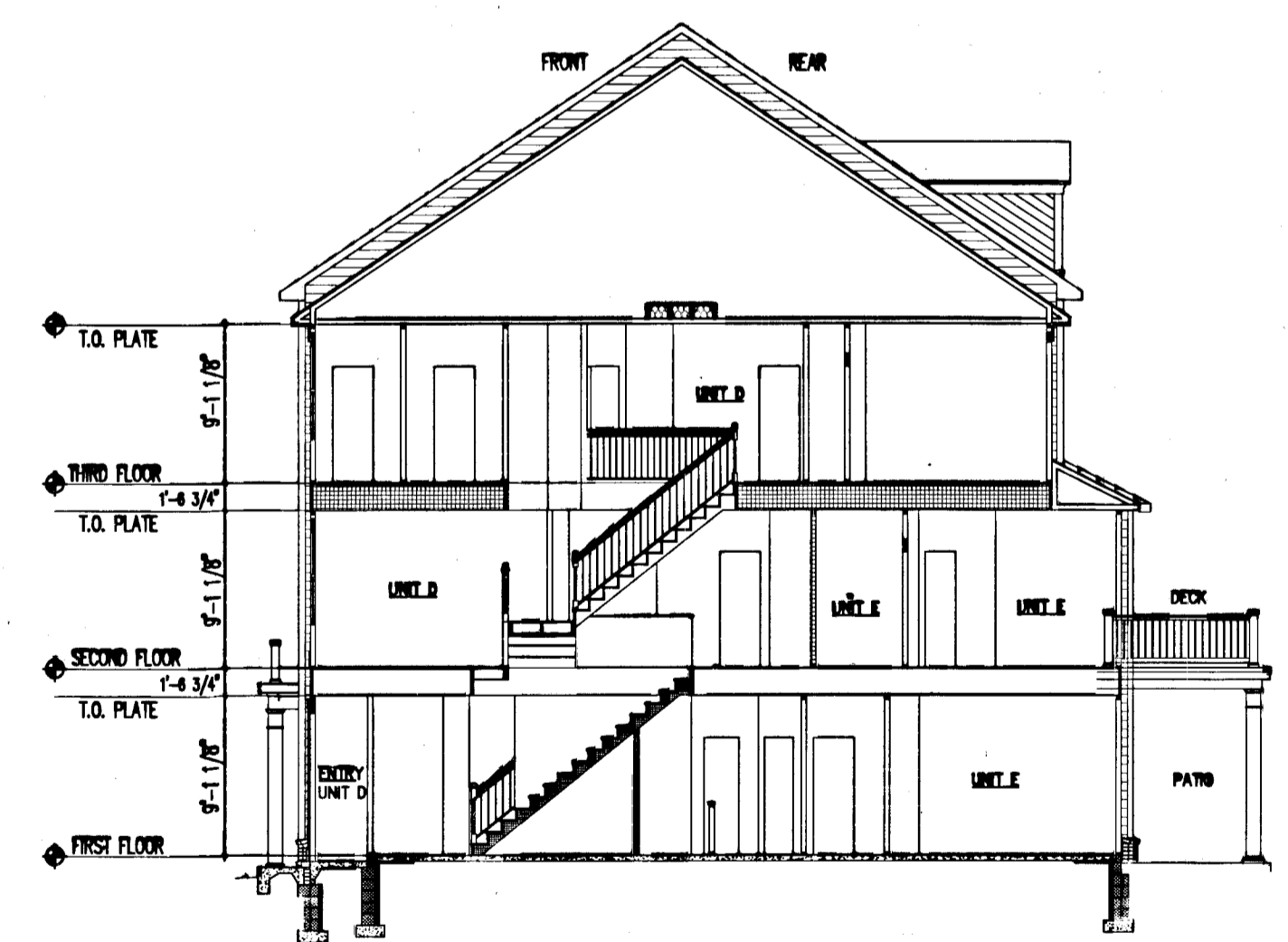
UNIT TYPE D
 THIRD FLOOR PLAN



UNITS D & E
 REAR ELEVATION



UNITS D & E
 FRONT ELEVATION



UNITS D & E
 BUILDING SECTION 1

City of Williamsburg & County of James City
 Circuit Court: This PLAT was recorded on
 6 August 2009
 at 3:59 AM/PM. PG. —
 DOCUMENT # 090022560
 BETSY B. WOOLRIDGE, CLERK
Betsy B. Woolridge Clerk

5 Large/Small Plat(s) Recorded
 hereon as # 090022560

*LCE=LIMITED COMMON ELEMENT

090022560

PLAN OF
GOVERNOR'S GROVE AT FIVE FORKS
A CONDOMINIUM
LOCATED IN THE BERKELEY DISTRICT
JAMES CITY COUNTY, VIRGINIA

DATE: 6/12/09 SCALE: 1" = 10' JOB# 06-460
SHEET 3 OF 3

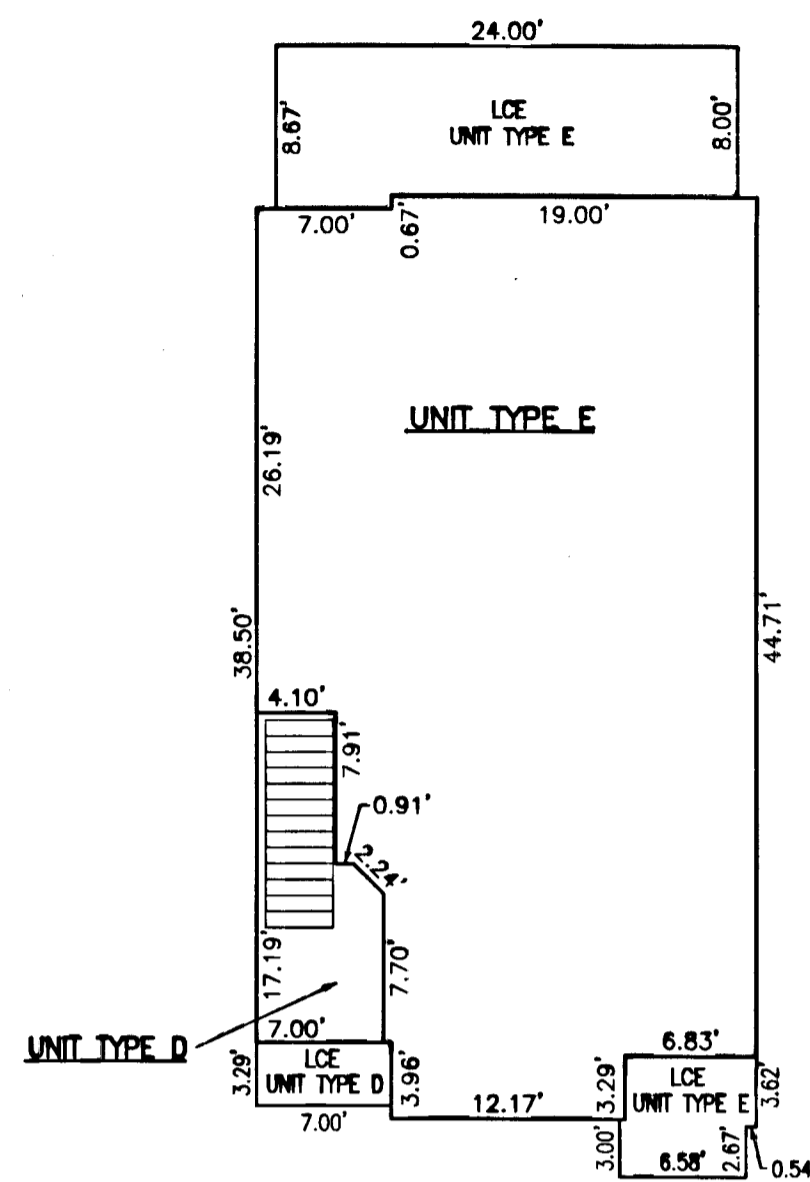
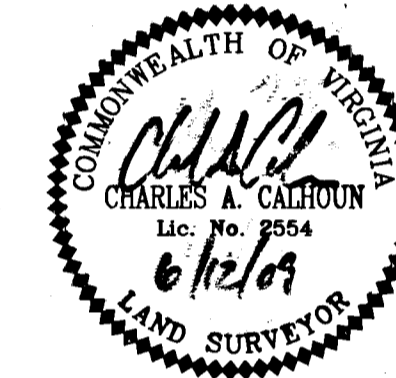
LandTech
Resources, Inc.
Surveying • Engineering • GPS

205-E Bulfinch Blvd., Williamsburg, VA 23188
Phone: (757) 565-1677 Fax: (757) 565-0782
web: landtechresources.com

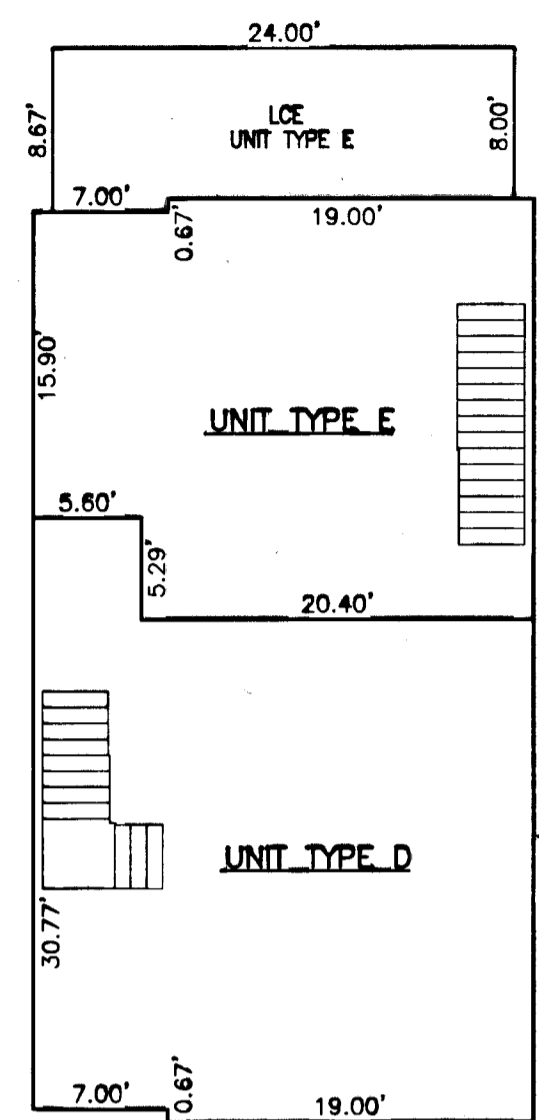
SURVEYORS CERTIFICATE

I HEREBY CERTIFY THAT THIS PLAN IS ACCURATE AND COMPLIES WITH THE PROVISIONS OF SECTION 55-79.58 (B) OF THE CODE OF VIRGINIA 1950 AS AMENDED.

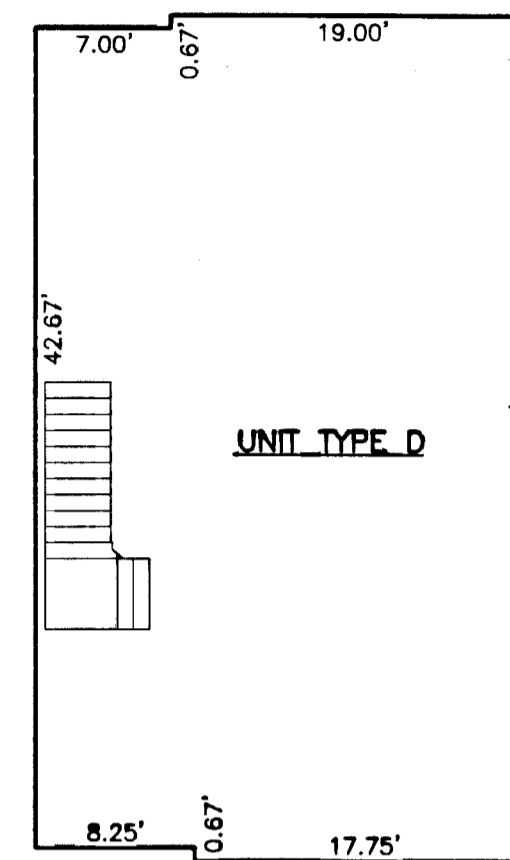
SIGNED: *Charles A. Calhoun*
CHARLES A. CALHOUN, L.S. #2554



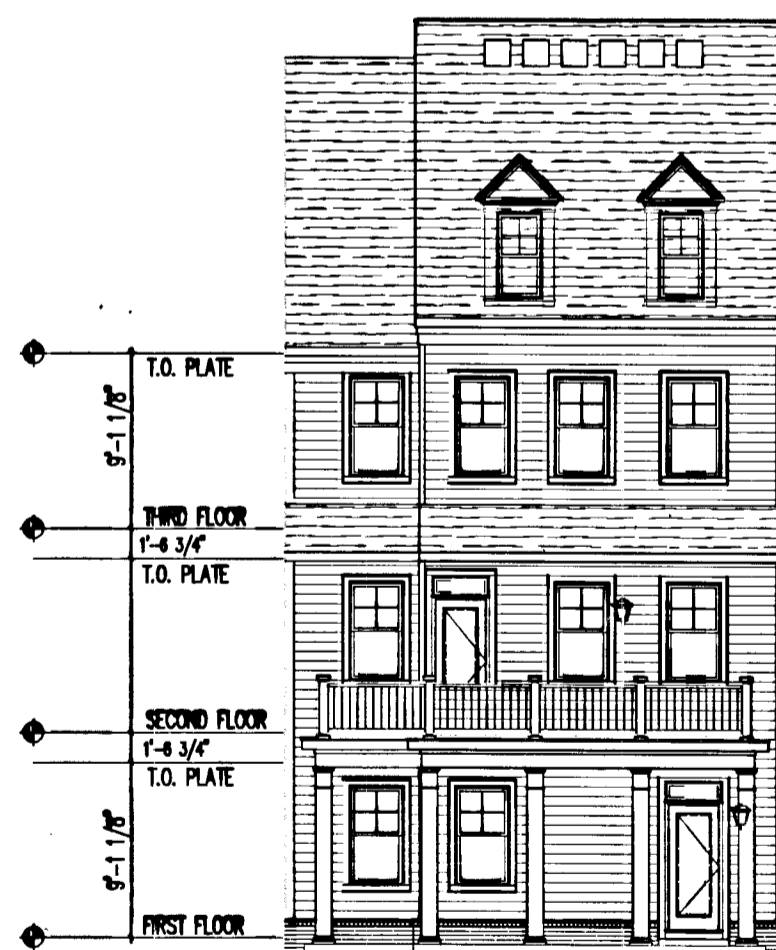
UNIT TYPES D & E
FIRST FLOOR PLAN



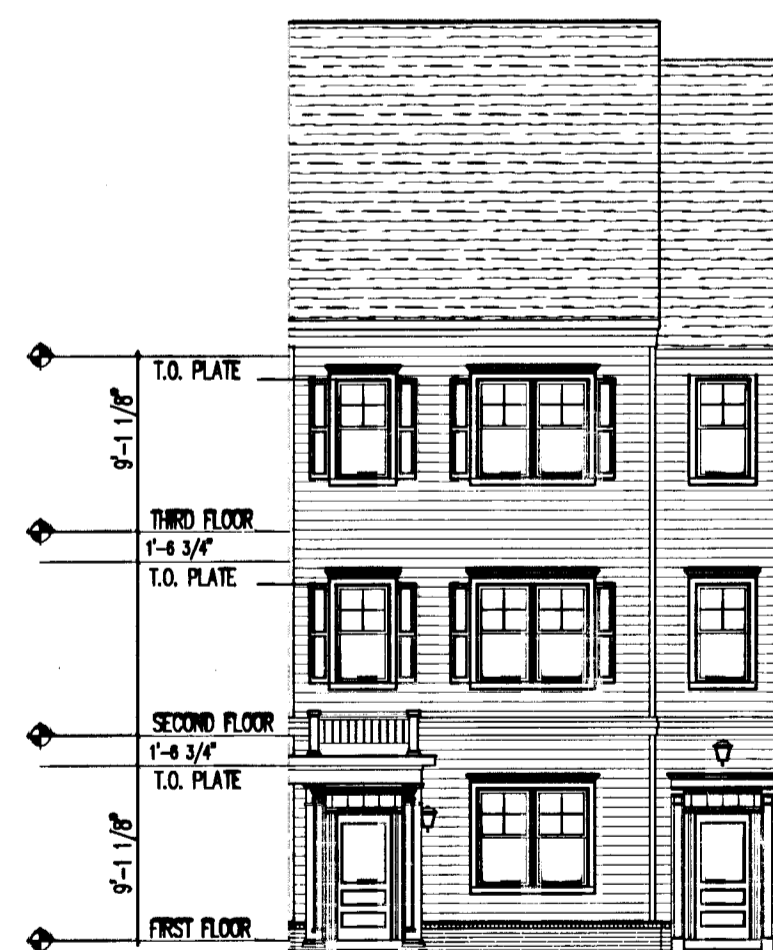
UNIT TYPES D & E
SECOND FLOOR PLAN



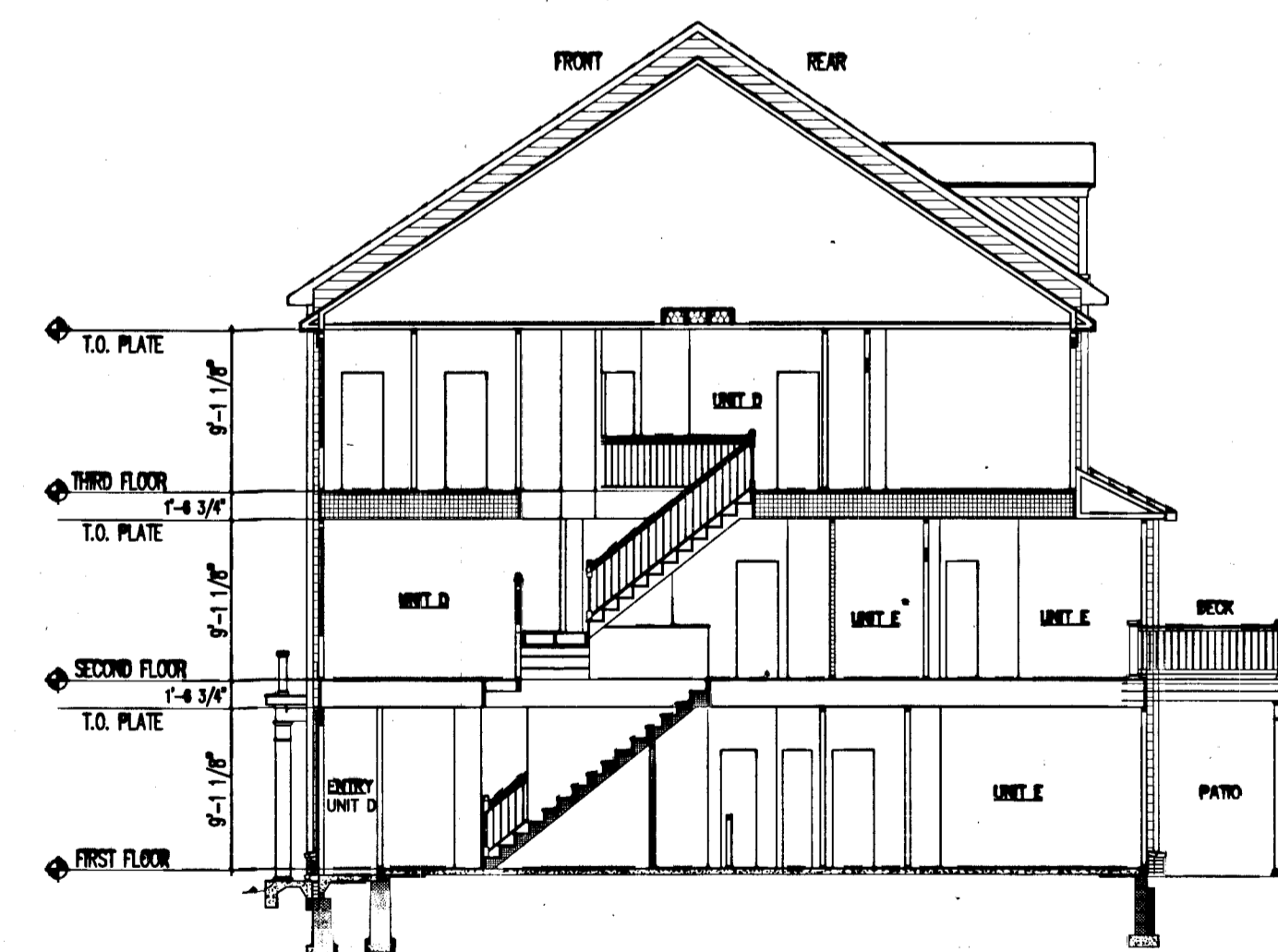
UNIT TYPE D
THIRD FLOOR PLAN



UNITS D & E
REAR ELEVATION



UNITS D & E
FRONT ELEVATION



UNITS D & E
BUILDING SECTION 1

5 Large/Small Plat(s) Recorded
herewith as # 090022560

City of Williamsburg & County of James City
Circuit Court: This PLAT was recorded on
10 August 2009
at *3:59* AM/PM, *EB* PG *—*
DOCUMENT # *090022560*
BETSY B. WOOLRIDGE, CLERK
Betsy B. Woolridge Clerk

*LCE=LIMITED COMMON ELEMENT