

090022560

PLAN OF
GOVERNOR'S GROVE AT FIVE FORKS
 A CONDOMINIUM
 LOCATED IN THE BERKELEY DISTRICT
 JAMES CITY COUNTY, VIRGINIA

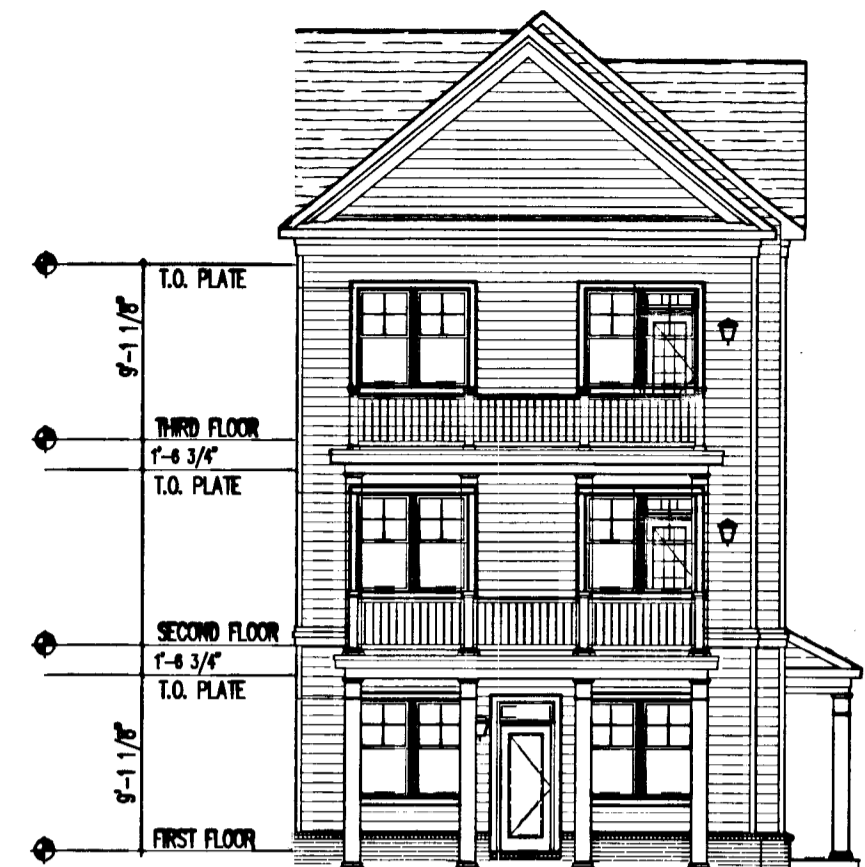
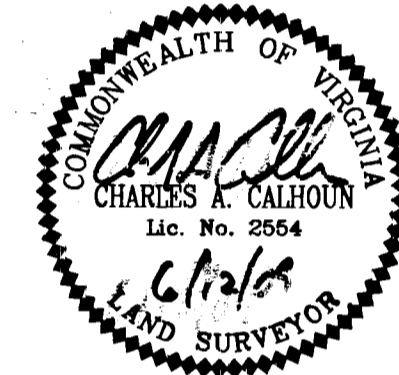
DATE: 6/12/09 SCALE: 1" = 10' JOB# 06-460
 SHEET 2 OF 3

LandTech
Resources, Inc.
 Surveying • Engineering • GPS
 205-E Bulfinch Blvd., Williamsburg, VA 23188
 Phone: (757) 565-1677 Fax: (757) 565-0782
 web: landtechresources.com

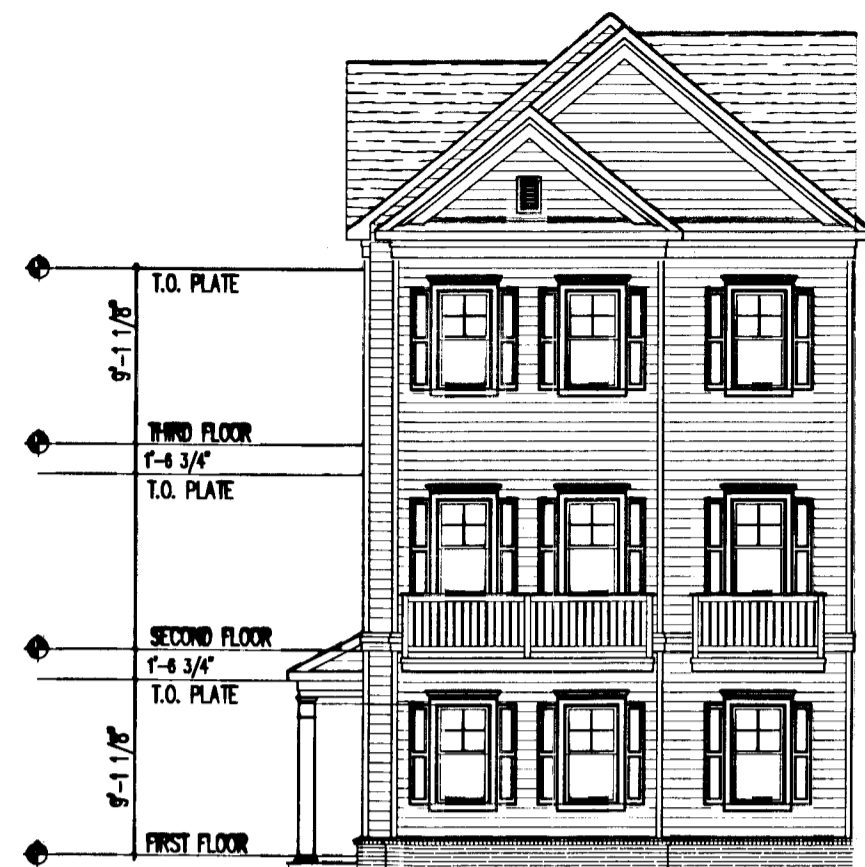
SURVEYORS CERTIFICATE

I HEREBY CERTIFY THAT THIS PLAN IS ACCURATE AND COMPLIES WITH THE PROVISIONS OF SECTION 55-79.58 (B) OF THE CODE OF VIRGINIA 1950 AS AMENDED.

SIGNED: *Charles A. Calhoun*
 CHARLES A. CALHOUN, L.S. #2554



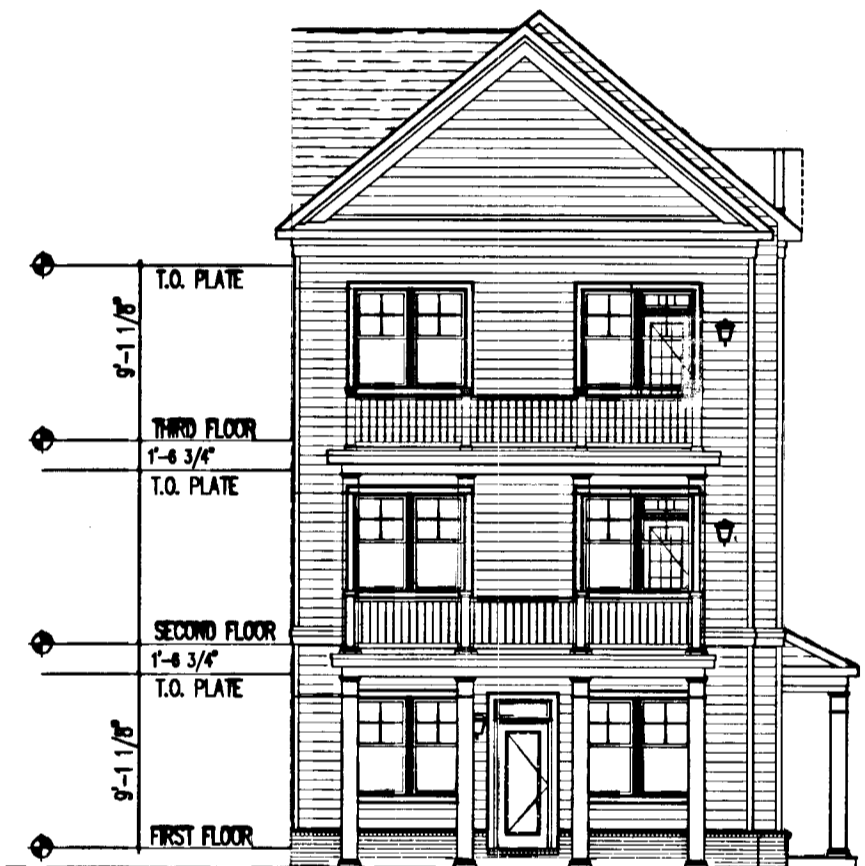
UNIT TYPES B-C
 REAR ELEVATION TYPE 3



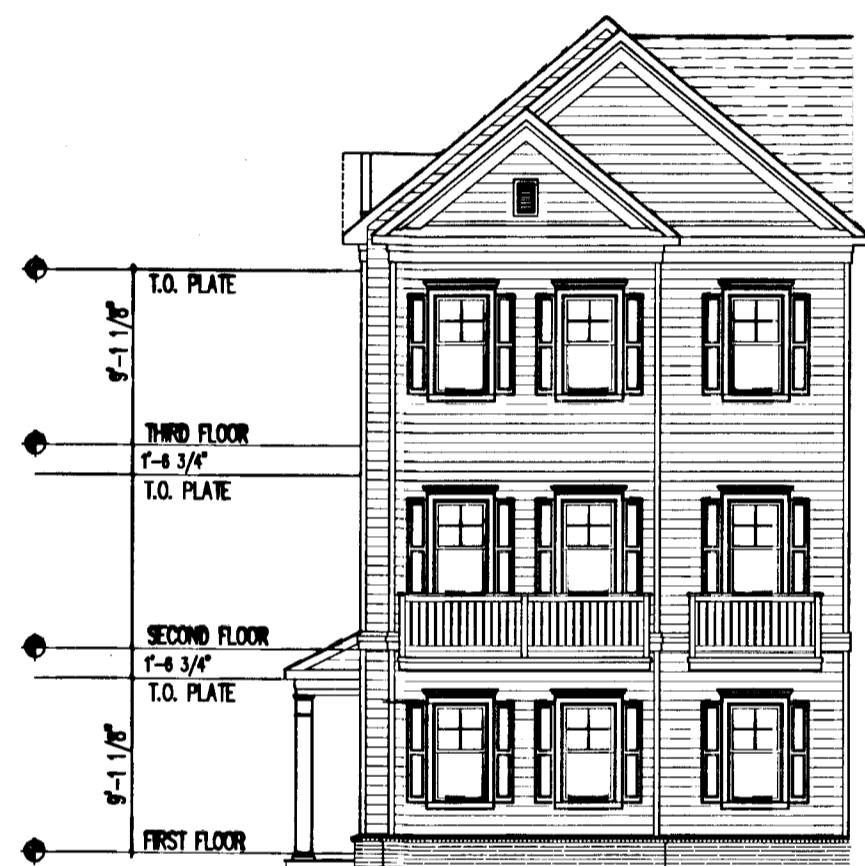
UNIT TYPES B-C
 FRONT ELEVATION TYPE 3



UNIT TYPES B-C
 SIDE ELEVATION TYPE 3



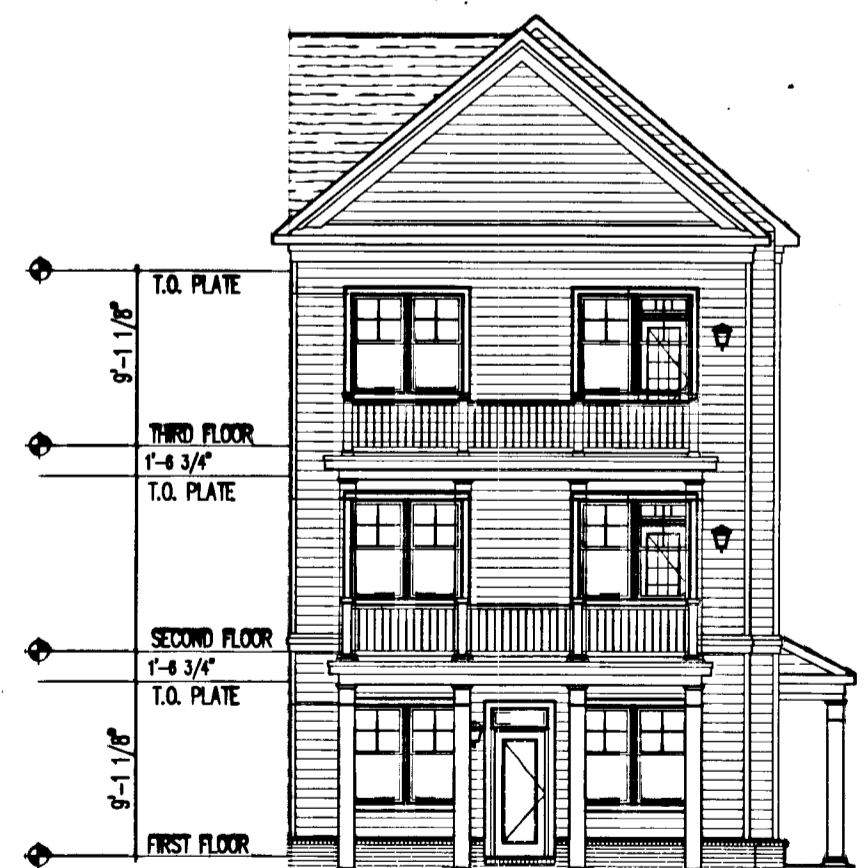
UNIT TYPES B-C
 REAR ELEVATION TYPE 2



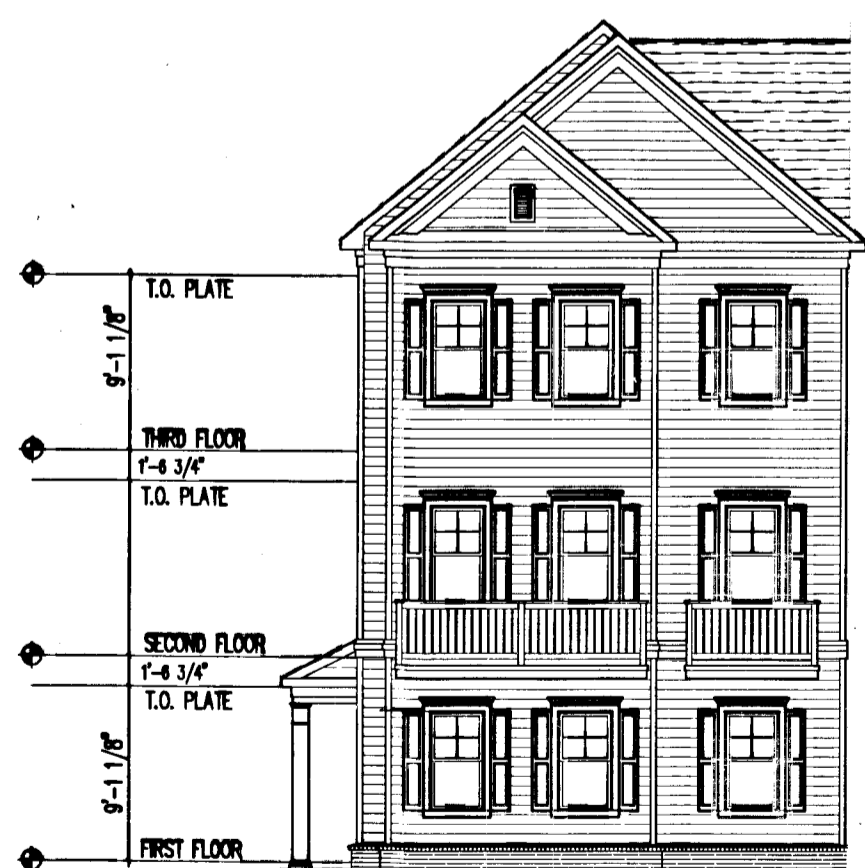
UNIT TYPES B-C
 FRONT ELEVATION TYPE 2



UNIT TYPES B-C
 SIDE ELEVATION TYPE 2



UNIT TYPES B-C
 REAR ELEVATION TYPE 1



UNIT TYPES B-C
 FRONT ELEVATION TYPE 1



UNIT TYPES B-C
 SIDE ELEVATION TYPE 1

5 Large/Small Plats Recorded
 herewith as # 090022560

City of Williamsburg & County of James City
 Circuit Court: This PLAT was recorded on
 6 August 2009
 at 3:59 AM/PM, PG. PG.
 DOCUMENT # 090022560
 BETSY B. WOOLRIDGE, CLERK
Betsy B. Woolridge Clerk

*LCE=LIMITED COMMON ELEMENT