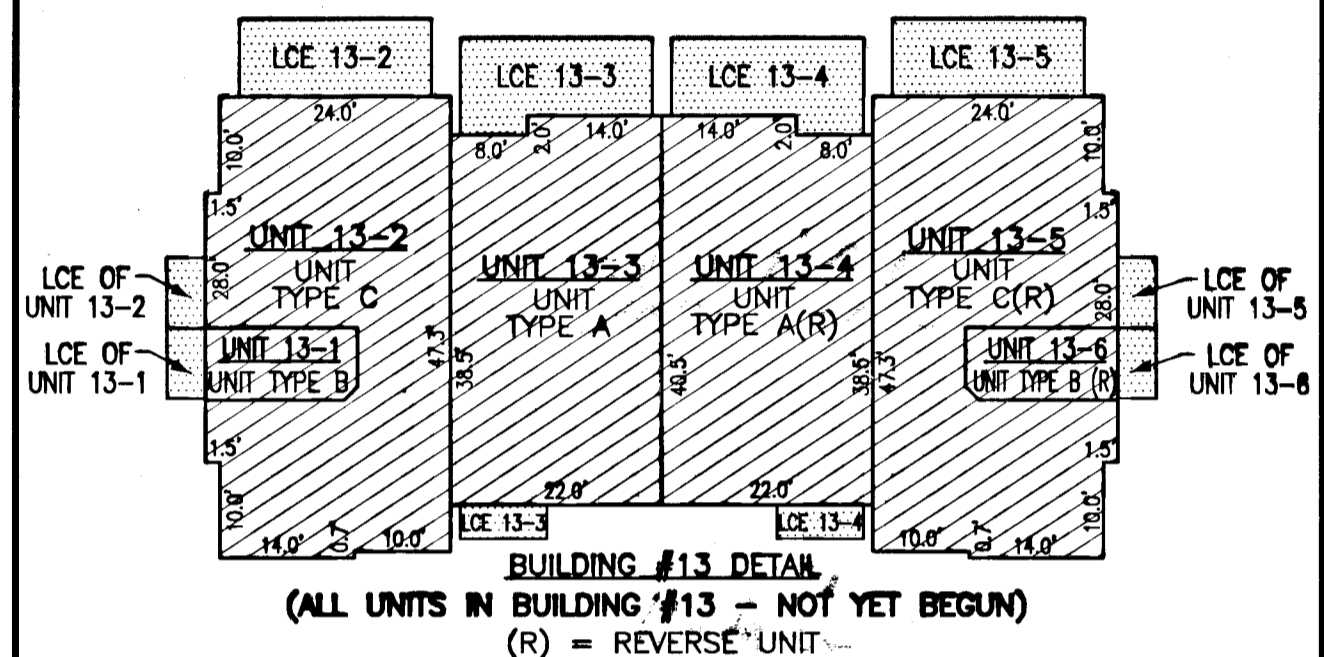
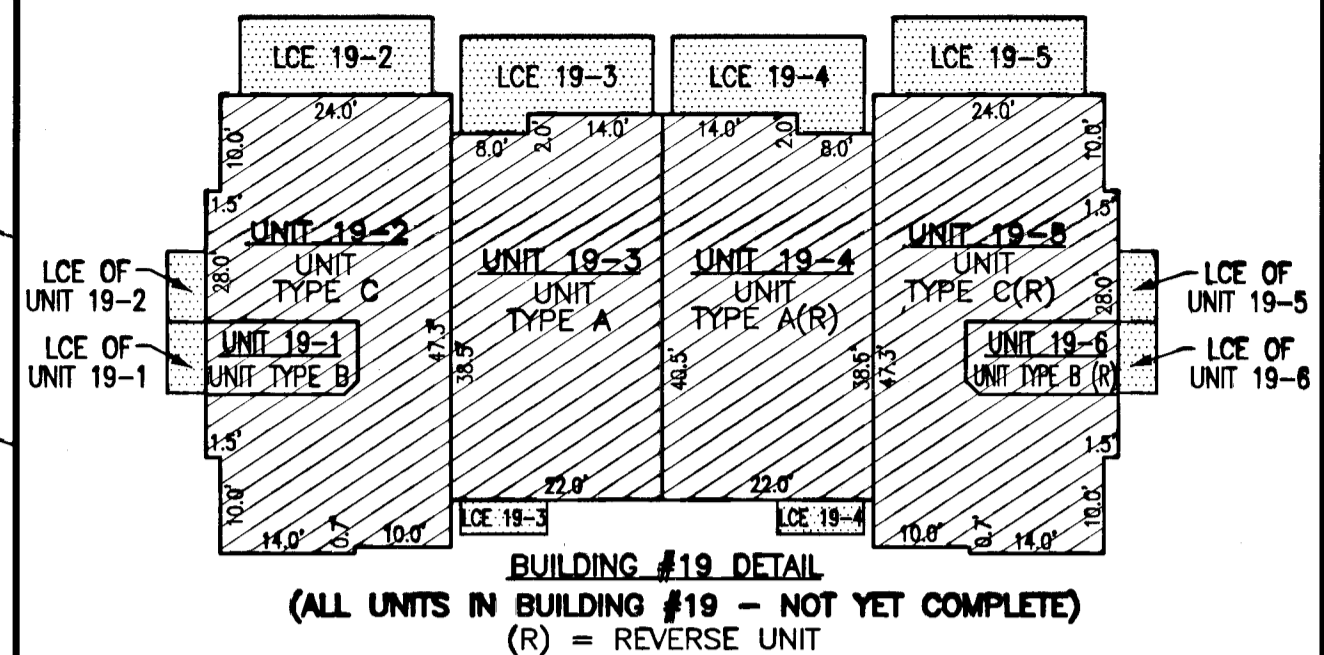
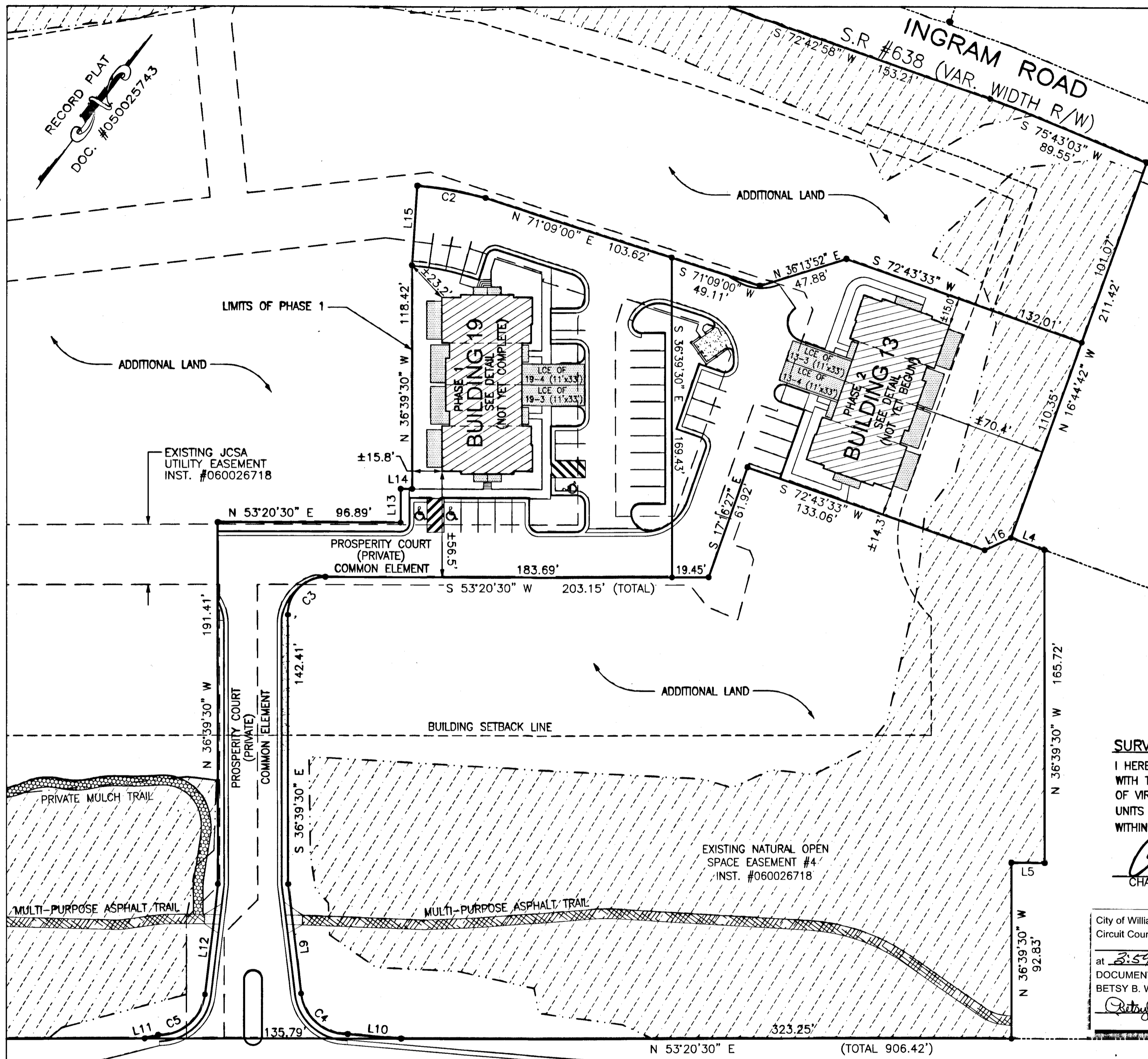


090022560



INDICATES LIMITED COMMON ELEMENT

INDICATES UNIT AREA

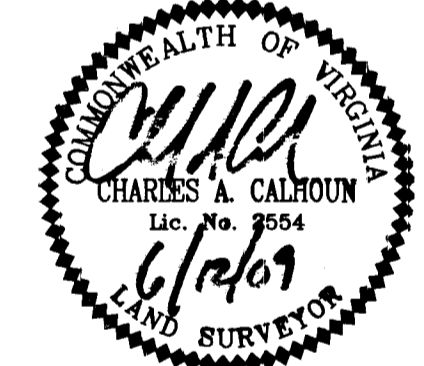
INDICATES COMMON ELEMENT

\*LCE=LIMITED COMMON ELEMENT

**SURVEYORS CERTIFICATE**

I HEREBY CERTIFY THAT THIS PLAT IS ACCURATE AND COMPLIES WITH THE PROVISIONS OF SECTION 55-79.58 (A) OF THE CODE OF VIRGINIA 1950 AS AMENDED AND I FURTHER CERTIFY THAT UNITS WITHIN BUILDING 19 ARE NOT YET COMPLETE AND UNITS WITHIN BUILDING 13 HAVE NOT YET BEGUN.

*Charles A. Calhoun*  
CHARLES A. CALHOUN LIC.# 2554 DATE 6/12/09



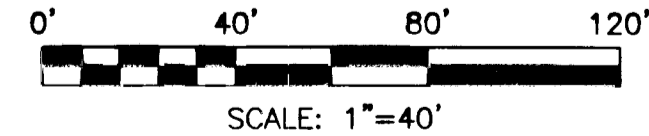
City of Williamsburg & County of James City Circuit Court: This PLAT was recorded on 6 August 2009 at 3:59 AM/PM, PG. DOCUMENT # 090022560 Betsy B. Woolridge, Clerk

5 Large/Small Plat(s) Recorded herewith as # 090022560

PLAT OF PHASE 1 AND PHASE 2 GOVERNOR'S GROVE AT FIVE FORKS A CONDOMINIUM LOCATED IN THE BERKELEY DISTRICT JAMES CITY COUNTY, VIRGINIA

DATE: 6/12/09 SCALE: 1" = 40' JOB# 06-460 SHEET 2 OF 2

JOHN TYLER HIGHWAY STATE ROUTE #5 (VARIABLE WIDTH PUBLIC R/W)



UNIT NUMBER	UNIT TYPE	STREET ADDRESS	PARCEL ID#
19-1	B	1901 PROSPERITY CT.	4622001901
19-2	C	1902 PROSPERITY CT.	4622001902
19-3	A	1903 PROSPERITY CT.	4622001903
19-4	A-(R)	1904 PROSPERITY CT.	4622001904
19-5	C-(R)	1905 PROSPERITY CT.	4622001905
19-6	B-(R)	1906 PROSPERITY CT.	4622001906

UNIT NUMBER	UNIT TYPE	STREET ADDRESS	PARCEL ID#
13-1	B	1301 PROSPERITY CT.	4712101301
13-2	C	1302 PROSPERITY CT.	4712101302
13-3	A	1303 PROSPERITY CT.	4712101303
13-4	A-(R)	1304 PROSPERITY CT.	4712101304
13-5	C-(R)	1305 PROSPERITY CT.	4712101305
13-6	B-(R)	1306 PROSPERITY CT.	4712101306

**LardTech Resources, Inc.**  
Surveying • Engineering • GPS

205-E Bulifants Blvd. Williamsburg, VA 23188  
Phone: (757) 565-1677 Fax: (757) 565-0782  
web: landtechresources.com