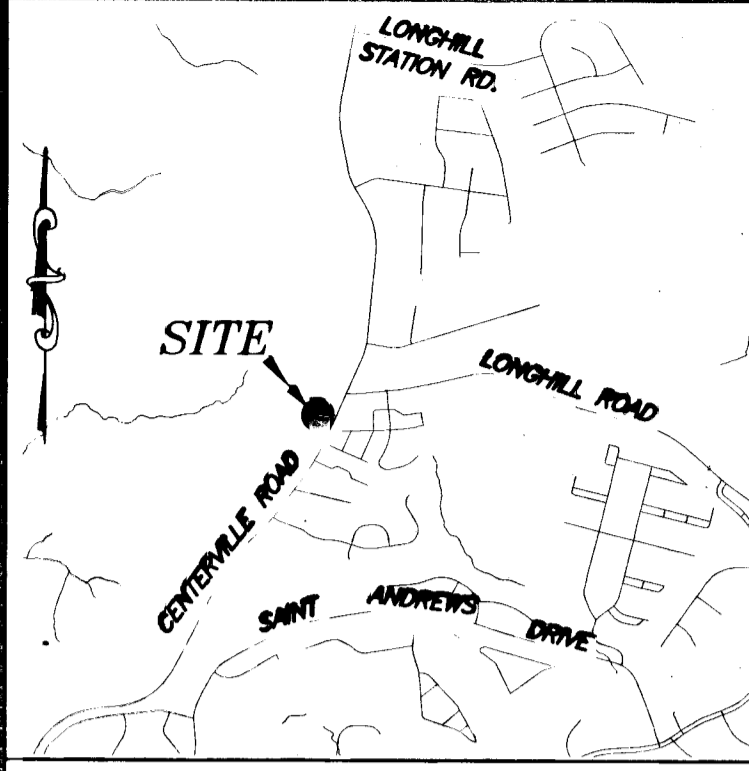


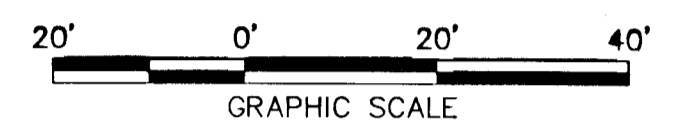
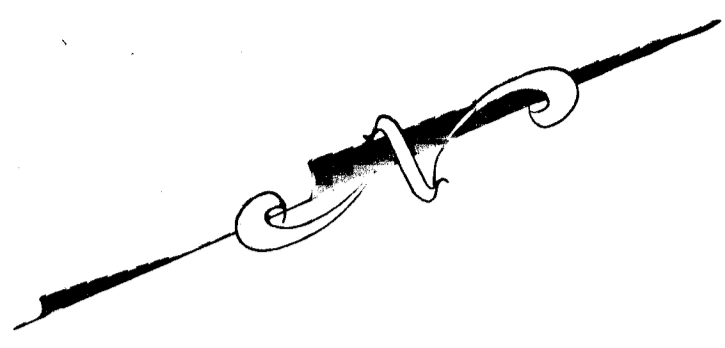
#090021200

PLAT OF DRAINAGE EASEMENT ACQUISITION
 FROM: IRENE PIERCE BROWN ESTATE
 C/O CHARLETTE M. BROWN
 TO: JAMES CITY COUNTY
 POWHATAN MAGISTERIAL DISTRICT
 SCALE: 1" = 20' DATE: APRIL 14, 2009
 JAMES CITY COUNTY - VIRGINIA

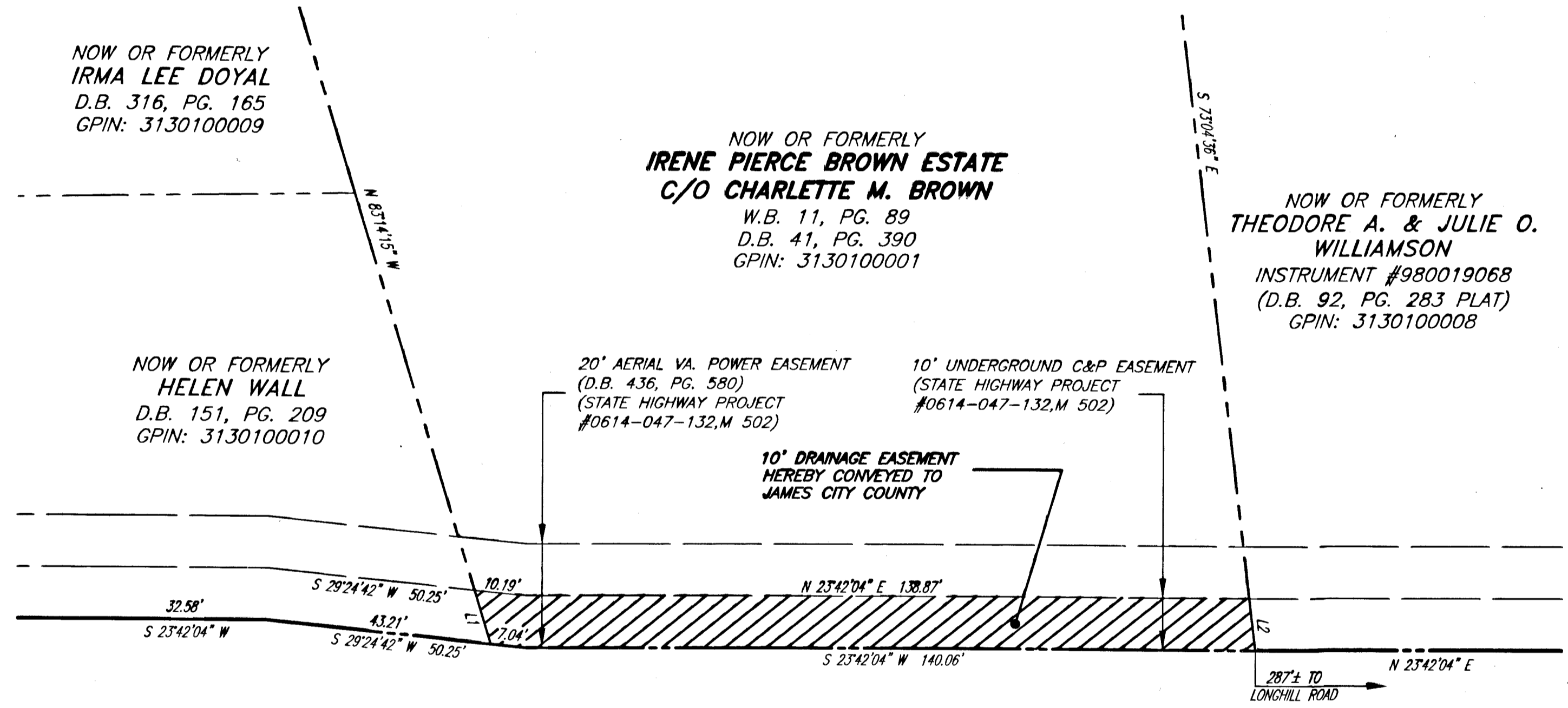
PRECISION MEASUREMENTS, INC.
 SURVEYORS - GPS - GIS - MAPPING - 3-D LASER SCANNING
 813 DILIGENCE DRIVE, SUITE 119
 NEWPORT NEWS, VIRGINIA 23606
 (757) 595-7570 (757) 595-7571 FAX
 SHEET 2 OF 2



VICINITY MAP SCALE: 1" = 2000'



#090021200



CENTERVILLE ROAD
 (VARIABLE WIDTH R/W) (ROUTE 614)

City of Williamsburg & County of James City
 Circuit Court: This PLAT was recorded on
 24 July 2009
 at 10:56 AM/PM PG _____
 DOCUMENT # 090021200
 BETSY B. WOOLRIDGE, CLERK
 Betsy B. Woolridge Clerk

LINE TABLE

LINE	BEARING	DISTANCE
L1	N 83°14'15" W	10.78'
L2	S 73°04'36" E	10.07'

HATCH LEGEND

10' DRAINAGE EASEMENT
 HEREBY CONVEYED TO
 JAMES CITY COUNTY
 1,480 SQ.FT. OR 0.034 ACRES

2 Large/Small Plat(s) Recorded
 herewith as # 090021200

SEE SHEET 1 FOR NOTES AND OWNER'S CERTIFICATE