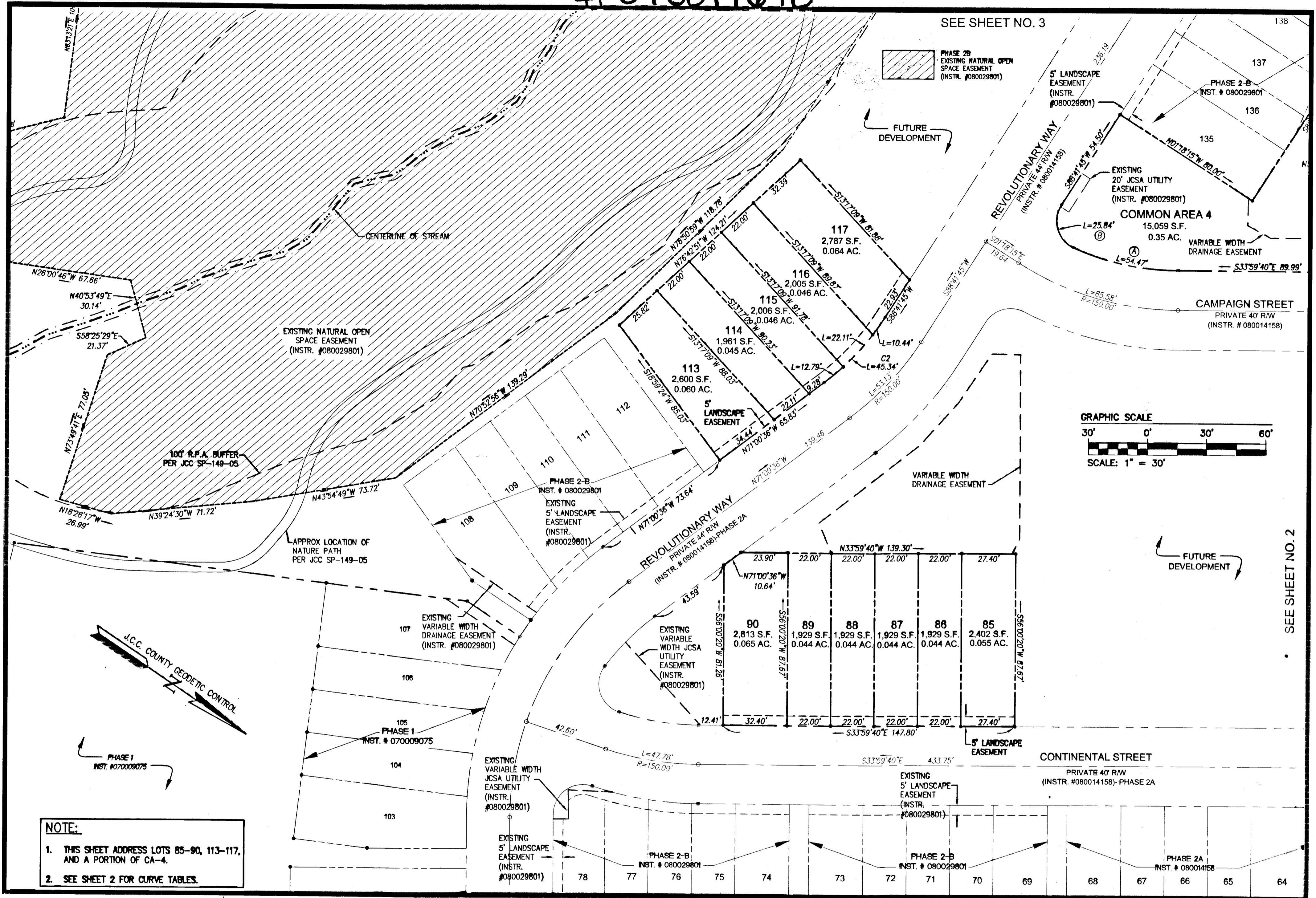
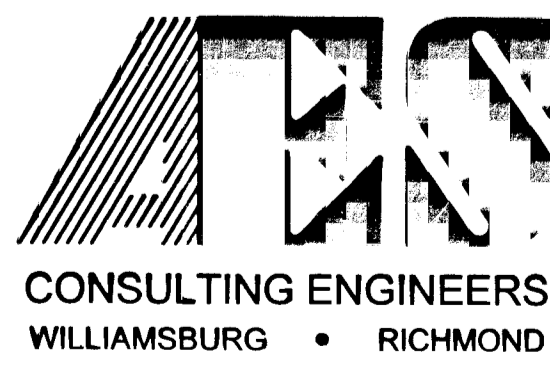


#090019678

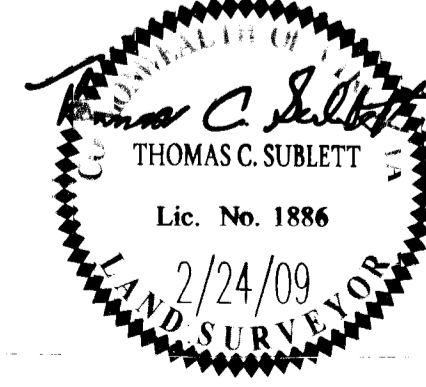


SEE SHEET NO. 2



5248 Olde Towne Road, Suite 1  
Williamsburg, Virginia 23188  
(757) 253-0040  
Fax (757) 220-8994

PLAT OF SUBDIVISION  
**PHASE 2-C**  
**LIBERTY CROSSING**  
LOTS  
6-10, 26-28, 35-48, 85-90, 113-117  
& 131-134  
STONEHOUSE DISTRICT JAMES CITY COUNTY VIRGINIA



City of Williamsburg & County of James City	
Circuit Court: This PLAT was recorded on	
9 July 2009	
at 11:58 AM/PM, PG	
DOCUMENT # 090019678	
BETSY B. WOOLRIDGE, CLERK	
Betsy B. Woolridge Clerk	
No.	DATE
REVISION / COMMENT / NOTE	
BY	

Designed AES	Drawn JFS
Scale 1"=30'	Date 2/24/09
Project No. 9353-05	
Drawing No. 4 OF 4	