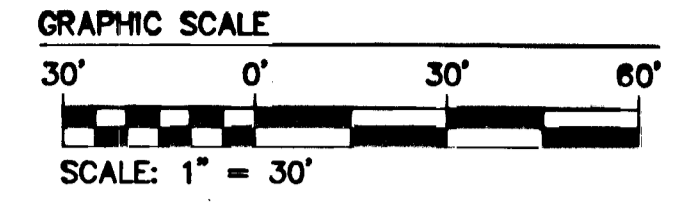
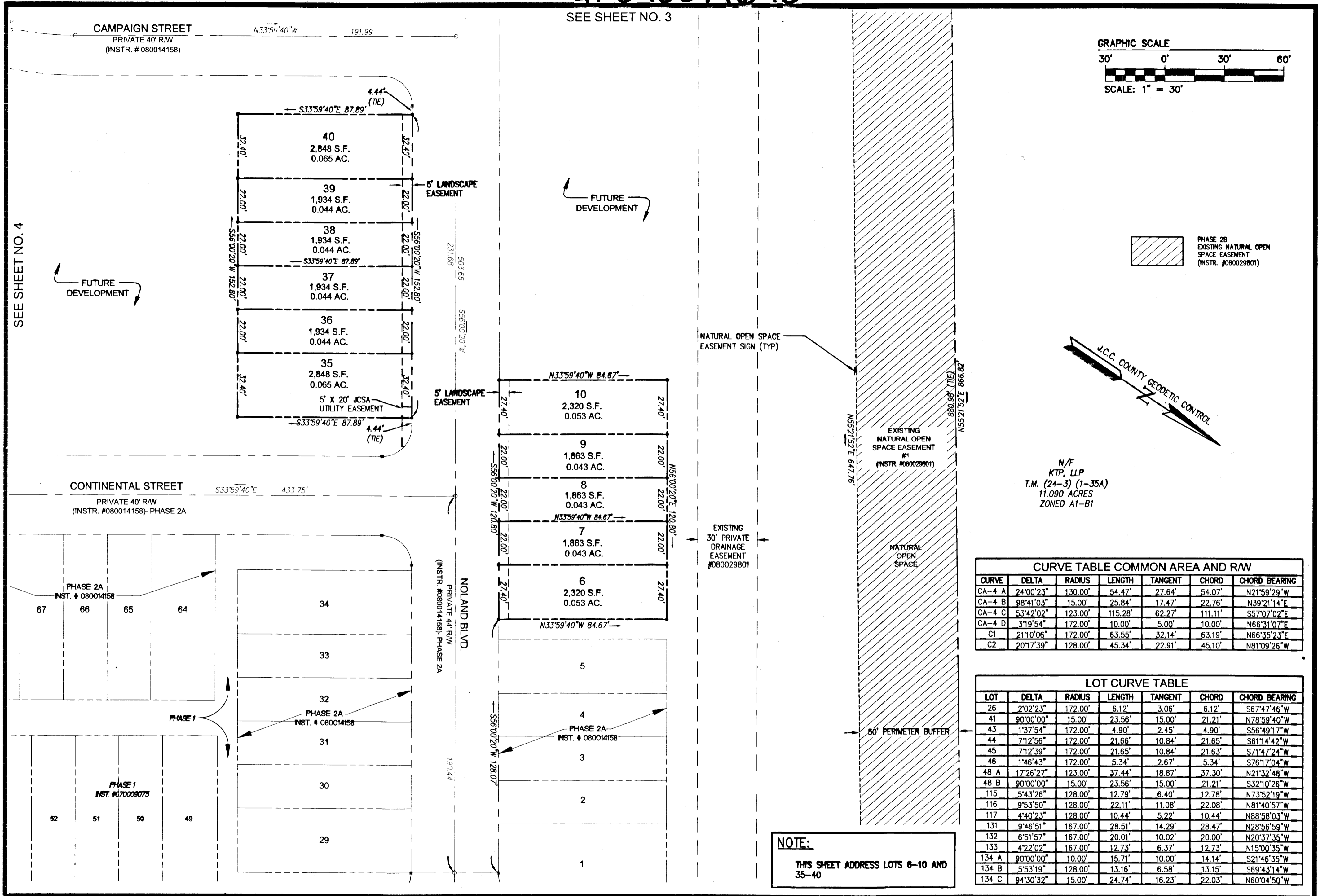
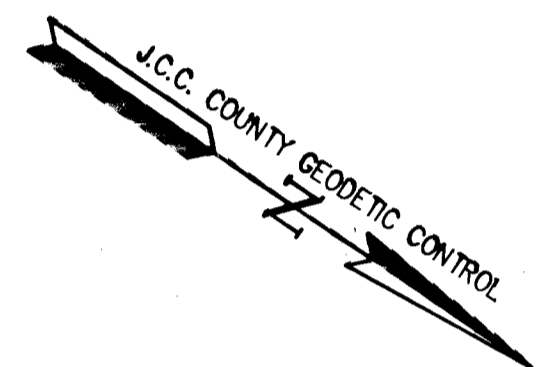


#090019678

SEE SHEET NO. 3



PHASE 2B
EXISTING NATURAL OPEN
SPACE EASEMENT
(INSTR. #080029801)



N/F
KTP, LLP
T.M. (24-3) (1-35A)
11.090 ACRES
ZONED A1-B1

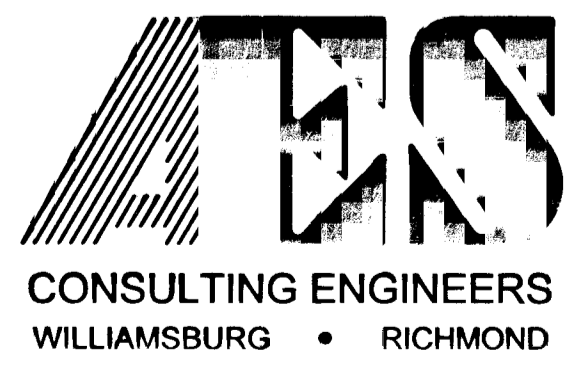
CURVE TABLE COMMON AREA AND R/W

CURVE	DELTA	RADIUS	LENGTH	TANGENT	CHORD	CHORD BEARING
CA-4 A	24°00'23"	130.00'	54.47'	27.64'	54.07'	N21°59'29"W
CA-4 B	98°41'03"	15.00'	25.84'	17.47'	22.76'	N39°21'14"E
CA-4 C	53°42'02"	123.00'	115.28'	62.27'	111.11'	S57°07'02"E
CA-4 D	3°19'54"	172.00'	10.00'	5.00'	10.00'	N66°31'07"E
C1	21°10'06"	172.00'	63.55'	32.14'	63.19'	N66°35'23"E
C2	20°17'39"	128.00'	45.34'	22.91'	45.10'	N81°09'26"W

LOT CURVE TABLE

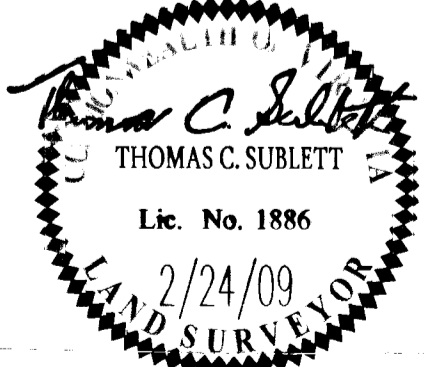
LOT	DELTA	RADIUS	LENGTH	TANGENT	CHORD	CHORD BEARING
26	2°02'23"	172.00'	6.12'	3.06'	6.12'	S67°47'46"W
41	90°00'00"	15.00'	23.56'	15.00'	21.21'	N78°59'40"W
43	1°37'54"	172.00'	4.90'	2.45'	4.90'	S56°49'17"W
44	7°12'56"	172.00'	21.66'	10.84'	21.65'	S61°14'42"W
45	7°12'39"	172.00'	21.65'	10.84'	21.63'	S71°47'24"W
46	1°46'43"	172.00'	5.34'	2.67'	5.34'	S76°17'04"W
48 A	17°26'27"	123.00'	37.44'	18.87'	37.30'	N21°32'48"W
48 B	90°00'00"	15.00'	23.56'	15.00'	21.21'	S32°10'26"W
115	5°43'26"	128.00'	12.79'	6.40'	12.78'	N73°52'19"W
116	9°53'50"	128.00'	22.11'	11.08'	22.08'	N81°40'57"W
117	4°40'23"	128.00'	10.44'	5.22'	10.44'	N88°58'03"W
131	9°46'51"	167.00'	28.51'	14.29'	28.47'	N28°56'59"W
132	6°51'57"	167.00'	20.01'	10.02'	20.00'	N20°37'35"W
133	4°22'02"	167.00'	12.73'	6.37'	12.73'	N15°00'35"W
134 A	90°00'00"	10.00'	15.71'	10.00'	14.14'	S21°46'35"W
134 B	5°53'19"	128.00'	13.16'	6.58'	13.15'	S69°43'14"W
134 C	94°30'32"	15.00'	24.74'	16.23'	22.03'	N60°04'50"W

NOTE:
THIS SHEET ADDRESS LOTS 6-10 AND 35-40



4 Large/Small Plat(s) Recorded
herein as # 090019678
5248 Olde Towne Road, Suite 1
Williamsburg, Virginia 23188
(757) 253-0040
Fax (757) 220-8994

PLAT OF SUBDIVISION
PHASE 2-C
LIBERTY CROSSING
LOTS
6-10, 26-28, 35-48, 85-90, 113-117
& 131-134
STONEHOUSE DISTRICT JAMES CITY COUNTY VIRGINIA



No.	DATE	REVISION / COMMENT / NOTE	BY

City of Williamsburg & County of James City
Circuit Court: This PLAT was recorded on
at 11:58 AM/PM-PB - PG -
DOCUMENT # 090019678
BETSY B. WOOLRIDGE, CLERK
Betsy B. Woolridge Clerk

Designed AES	Drawn JFS
Scale 1" = 30'	Date 2/24/09
Project No. 9353-05	
Drawing No. 2 OF 4	