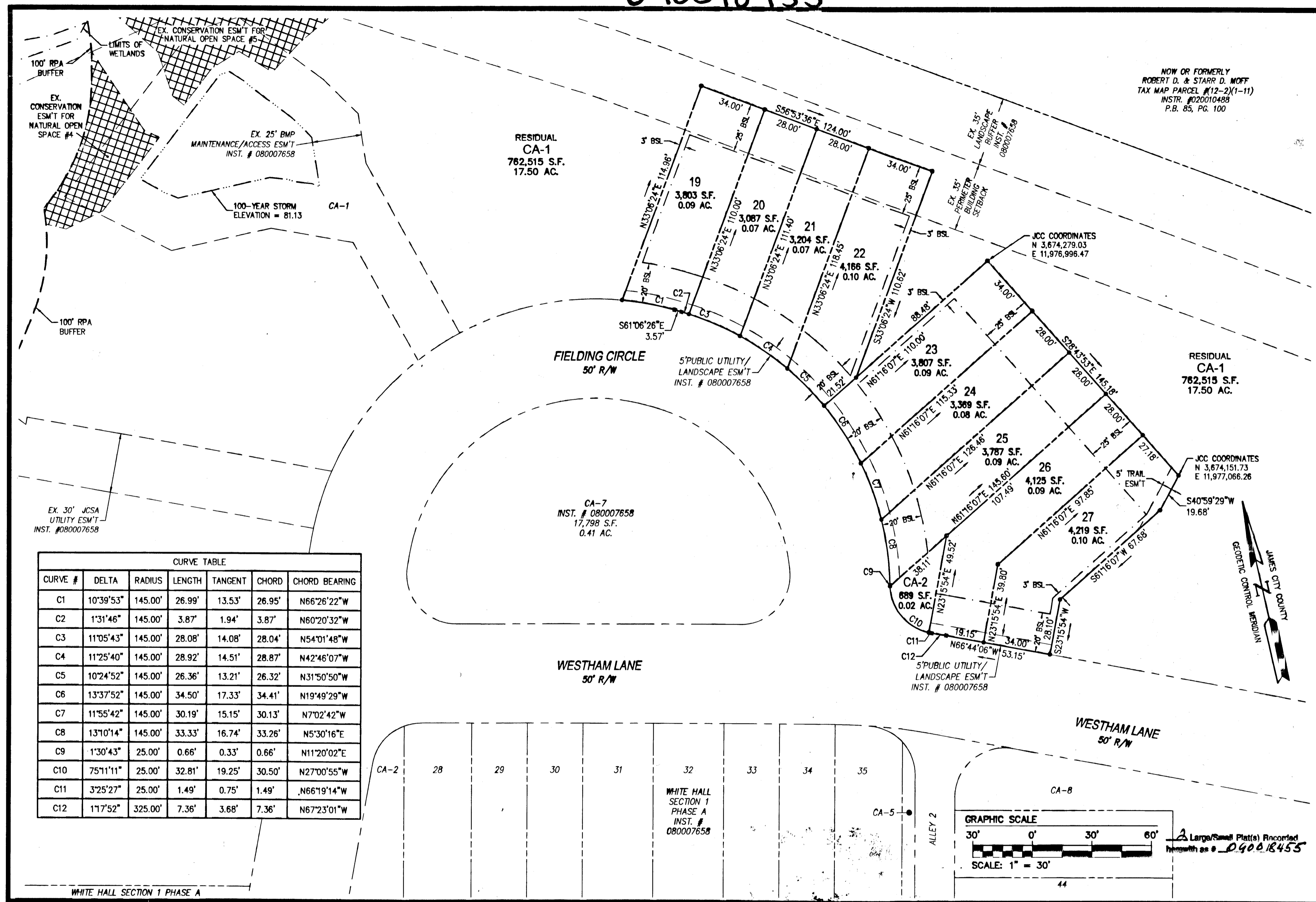


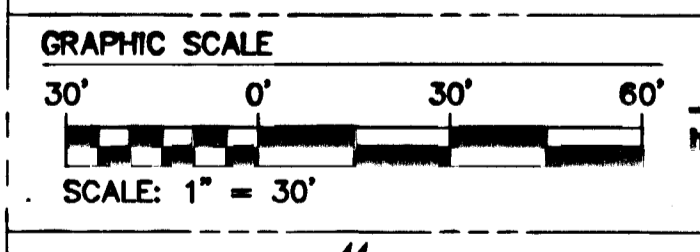
090018455

NOW OR FORMERLY  
ROBERT D. & STARR D. MOFF  
TAX MAP PARCEL #12-2(1-11)  
INSTR. #020010488  
P.B. 85, PG. 100

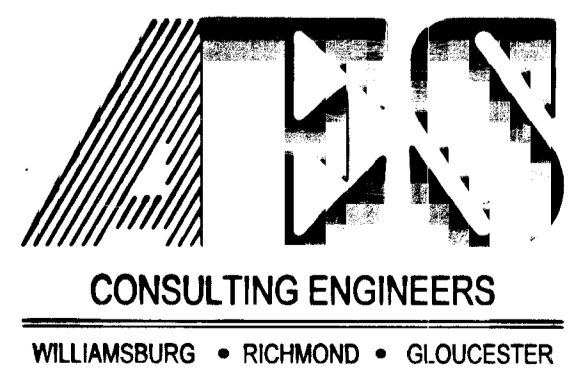


CURVE TABLE

CURVE #	DELTA	RADIUS	LENGTH	TANGENT	CHORD	CHORD BEARING
C1	10°39'53"	145.00'	26.99'	13.53'	26.95'	N66°26'22"W
C2	1°31'46"	145.00'	3.87'	1.94'	3.87'	N60°20'32"W
C3	11°05'43"	145.00'	28.08'	14.08'	28.04'	N54°01'48"W
C4	11°25'40"	145.00'	28.92'	14.51'	28.87'	N42°46'07"W
C5	10°24'52"	145.00'	26.36'	13.21'	26.32'	N31°50'50"W
C6	13°37'52"	145.00'	34.50'	17.33'	34.41'	N19°49'29"W
C7	11°55'42"	145.00'	30.19'	15.15'	30.13'	N7°02'42"W
C8	13°10'14"	145.00'	33.33'	16.74'	33.26'	N5°30'16"E
C9	1°30'43"	25.00'	0.66'	0.33'	0.66'	N11°20'02"E
C10	75°11'11"	25.00'	32.81'	19.25'	30.50'	N27°00'55"W
C11	3°25'27"	25.00'	1.49'	0.75'	1.49'	N66°19'14"W
C12	11°7'52"	325.00'	7.36'	3.68'	7.36'	N67°23'01"W



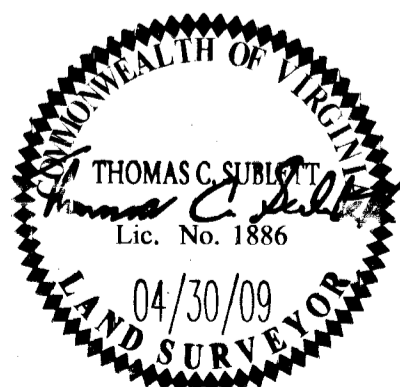
A Large/Small Plat(s) Recorded  
with # 090018455



5248 Olde Towne Road, Suite 1  
Williamsburg, Virginia 23188  
(757) 253-0040  
Fax (757) 220-8994

PLAT OF SUBDIVISION OF PARCEL CA-1  
**WHITE HALL**  
SECTION 1, PHASE B  
DEVELOPER: HHHUNT COMMUNITIES

STONEHOUSE DISTRICT      JAMES CITY COUNTY      VIRGINIA



City of Williamsburg & County of James City  
Circuit Court: This PLAT was recorded on  
29 June 2009  
at 9:44 AM/PM-PB PG  
DOCUMENT # 090018455  
BETSY B. WOOLRIDGE, CLERK  
Betsy B. Woolridge Clerk

No.	DATE	REVISION / COMMENT / NOTE	REVIEWED BY	TCS
1	5/21/09	REVISED PER COUNTY COMMENTS	MWP	TCS

Designed	Drawn
AES	MWP
Scale	Date
1"=30'	04/30/09
Project No.	9048-10
Drawing No.	2 of 2