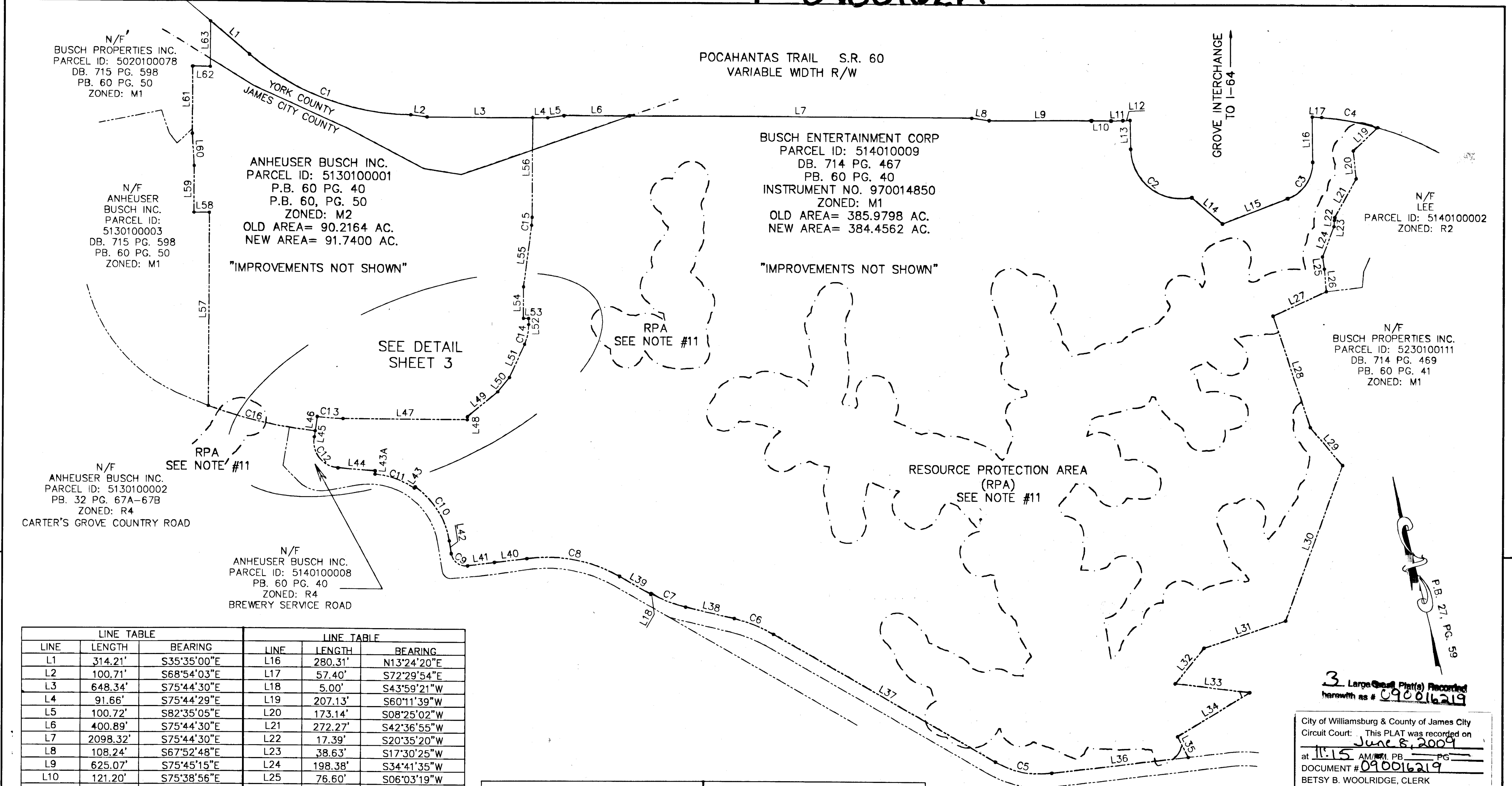


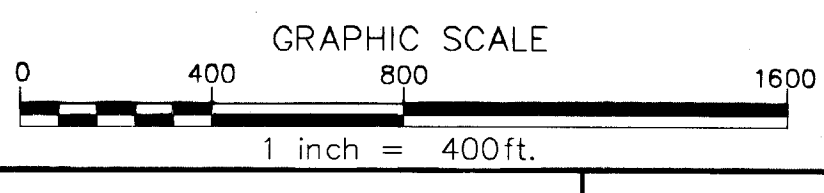
090016219



LINE TABLE			LINE TABLE		
LINE	LENGTH	BEARING	LINE	LENGTH	BEARING
L1	314.21'	S35°35'00"E	L16	280.31'	N13°24'20"E
L2	100.71'	S68°54'03"E	L17	57.40'	S72°29'54"E
L3	648.34'	S75°44'30"E	L18	5.00'	S43°59'21"W
L4	91.66'	S75°44'29"E	L19	207.13'	S60°11'39"W
L5	100.72'	S82°35'05"E	L20	173.14'	S08°25'02"W
L6	400.89'	S75°44'30"E	L21	272.27'	S42°36'55"W
L7	2098.32'	S75°44'30"E	L22	17.39'	S20°35'20"W
L8	108.24'	S67°52'48"E	L23	38.63'	S17°30'25"W
L9	625.07'	S75°45'15"E	L24	198.38'	S34°41'35"W
L10	121.20'	S75°38'56"E	L25	76.60'	S06°03'19"W
L11	72.29'	S77°27'20"E	L26	139.99'	S08°58'47"W
L12	44.50'	S77°26'26"E	L27	359.40'	S79°22'16"W
L13	178.50'	S12°56'32"W	L28	727.08'	S04°20'18"E
L14	247.46'	S35°14'47"E	L29	306.35'	S26°08'49"E
L15	430.24'	N82°58'56"E	L30	1019.28'	S34°00'07"W

CURVE TABLE						
CURVE	LENGTH	RADIUS	TANGENT	CHORD	CHORD BEARING	DELTA
C1	1077.55'	1537.40'	561.97'	1055.63'	S55°39'45"E	40°09'29"
C2	548.38'	313.01'	375.55'	480.89'	S37°16'24"E	100°22'42"
C3	290.17'	239.00'	166.00'	272.68'	N48°11'14"E	69°33'53"
C4	350.02'	1861.00'	175.53'	349.50'	N65°31'26"W	10°46'34"
C5	358.23'	562.74'	185.42'	352.21'	N64°16'51"W	36°28'23"
C6	259.50'	897.11'	130.66'	258.59'	N54°19'52"W	16°34'23"
C7	228.31'	787.82'	114.96'	227.51'	N54°18'55"W	16°36'16"
C8	589.51'	890.12'	306.03'	578.80'	N64°59'11"W	37°56'46"
C9	139.69'	90.00'	88.33'	126.08'	N39°29'42"W	88°55'39"
C10	402.13'	496.98'	212.81'	391.25'	N18°12'40"W	46°21'39"
C11	257.93'	486.98'	132.07'	254.92'	N56°33'53"W	30°20'47"
C12	272.16'	160.33'	182.05'	240.64'	N23°06'29"W	97°15'32"
C13	158.30'	1139.42'	79.28'	158.17'	S71°49'46"E	7°57'36"
C14	125.58'	286.40'	63.82'	124.58'	N25°37'45"E	25°07'22"
C15	50.16'	404.38'	25.11'	50.13'	N17°48'42"E	7°06'25"
C16	675.68'	2647.96'	339.68'	673.85'	S62°46'47"E	14°37'13"

LINE TABLE			LINE TABLE		
LINE	LENGTH	BEARING	LINE	LENGTH	BEARING
L31	526.52'	S85°38'35"W	L47	762.92'	N75°48'35"W
L32	282.00'	S52°55'37"W	L48	18.75'	S14°11'31"W
L33	460.57'	S69°00'26"E	L49	241.92'	S64°09'57"W
L34	518.70'	S72°36'47"W	L50	114.97'	S53°04'12"W
L35	143.63'	N12°49'48"W	L51	225.16'	S38°11'27"W
L36	840.70'	N82°31'03"W	L52	36.52'	S13°04'04"W
L37	1568.86'	N46°02'41"W	L53	31.96'	S74°08'31"E
L38	306.52'	N62°37'02"W	L54	195.47'	S14°10'56"W
L39	220.23'	N46°00'49"W	L55	381.43'	S21°21'54"W
L40	200.06'	N82°31'37"W	L56	613.49'	S14°15'29"W
L41	166.08'	N83°57'37"W	L57	1192.00'	N14°15'30"E
L42	80.16'	N04°58'06"E	L58	94.67'	N75°44'30"W
L43	10.00'	S48°36'30"W	L59	287.92'	N14°15'29"E
L43A	20.00'	N18°15'43"E	L60	198.71'	N10°24'51"E
L44	229.99'	N71°44'17"W	L61	414.00'	N14°15'30"E
L45	36.49'	N22°09'07"E	L62	108.00'	S75°04'00"E
L46	88.91'	S22°09'07"W	L63	280.14'	N14°15'30"E



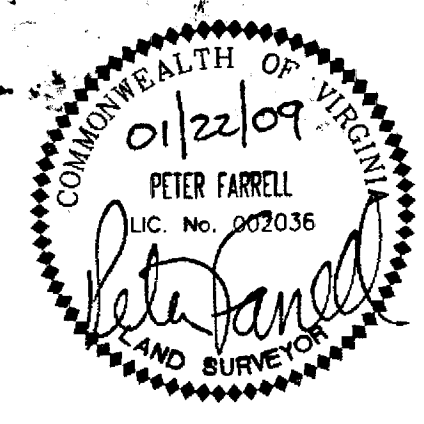
3 Large Scale Plat(s) Recorded herewith as # 090016219

City of Williamsburg & County of James City Circuit Court: This PLAT was recorded on June 8, 2009 at 11:15 AM/PM, PG. 1 DOCUMENT # 090016219 BETSY B. WOOLRIDGE, CLERK *Betsy B. Woolridge* Clerk

BOUNDARY LINE ADJUSTMENT
 BETWEEN THE PROPERTIES OF
ANHEUSER BUSCH, INC.
 AND
BUSCH ENTERTAINMENT, CORP.
 ROBERTS DISTRICT, JAMES CITY COUNTY, VIRGINIA

DATE: 01/22/09 SCALE: 1"=400'

SHEET 2 OF 3



4029 Ironbound Road Suite 200 Williamsburg, VA 23185 Tel. (757) 253-2975 Fax (757) 229-0049 Email: lmdg@landmarkdg.com

5544 Greenwich Road Suite 200 Virginia Beach, VA 23462 Tel. (757) 473-2000 Fax (757) 497-7933 Email: lmdg@landmarkdg.com