

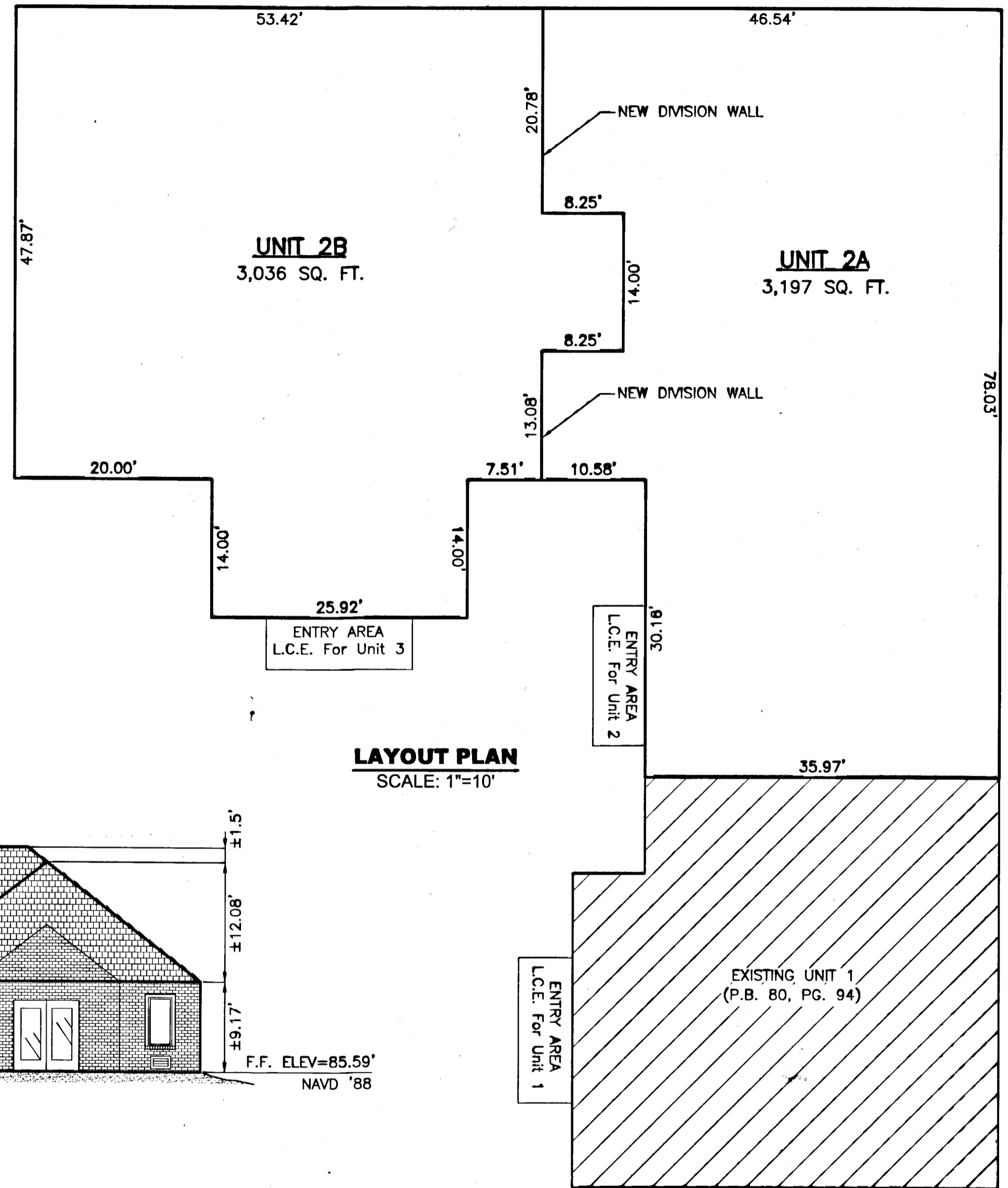
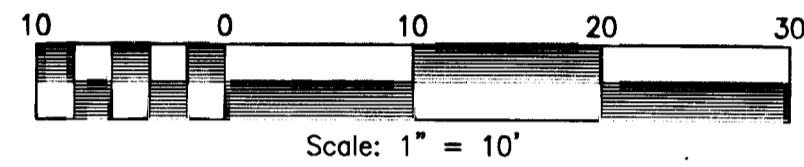
090015545

AMENDED PLAN TO SUBDIVIDE UNIT 2
QUARTERLAND COMMONS PHASE IX
OFFICE CONDOMINIUM
ROBERTS DISTRICT, JAMES CITY COUNTY, VIRGINIA
PROJECT #09-038 SCALE: AS SHOWN DATE: 04-06-09

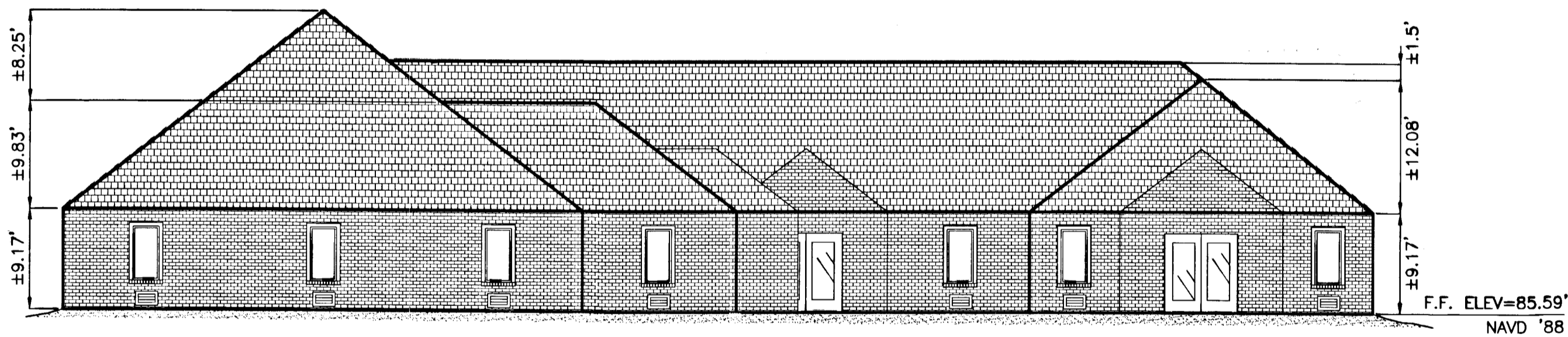


205 Bulifants Blvd., Ste. E, Williamsburg, VA 23188
Phone: (757) 565-1877 Fax: (757) 565-0782
web: landtechresources.com

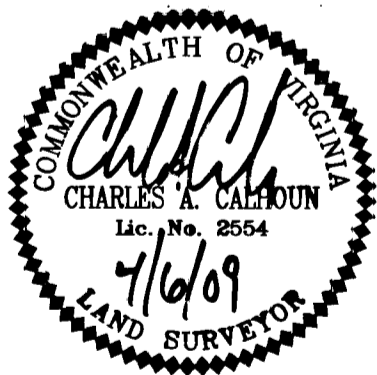
SHEET 1 OF 1



LAYOUT PLAN
SCALE: 1"=10'



FRONT BUILDING ELEVATION
SCALE: 1"=10'



I CERTIFY THAT THIS PLAN IS ACCURATE AND COMPLIES WITH THE PROVISIONS OF SECTION 55-79.58(b) OF THE CODE OF VIRGINIA 1950 AS AMENDED AND THAT UNITS SHOWN HEREON HAVE BEEN SUBSTANTIALLY COMPLETED.

Charles A. Calhoun
CHARLES A. CALHOUN #2554

1 Large/Small Plat(s) Recorded herewith as # 090015545

City of Williamsburg & County of James City
Circuit Court: This PLAT was recorded on
at 1:57 PM, P.B. 6-2-2009 PG. 1
DOCUMENT # 090015545
BETSY B. WOOLRIDGE, CLERK
Betsy B. Woolridge Clerk

NOTES:

- 1. THIS PLAN IS INTENDED TO SUBDIVIDE THE EXISTING UNIT 2 AS SHOWN IN P.B. 80, PG. 94. NO ADDITIONAL AREA IS BEING CREATED BY THIS PLAN. SEE P.B. 80, PG. 93 FOR PLAT.
- 2. THE EXISTING PLAN FOR UNIT 2 RECORDED IN P.B. 80 PG. 94 SHOWS THE DIMENSIONS TO THE INTERIOR FACE OF STUD. DIMENSIONS SHOWN ON THIS PLAN ARE TO OUTSIDE FACE OF STUD PER CONDOMINIUM DECLARATION RECORDED IN INST. #010004948. REFER TO SAID DECLARATION FOR A MORE DETAILED DESCRIPTION OF OWNERSHIP LIMITS.
- 3. L.C.E. = LIMITED COMMON ELEMENT.