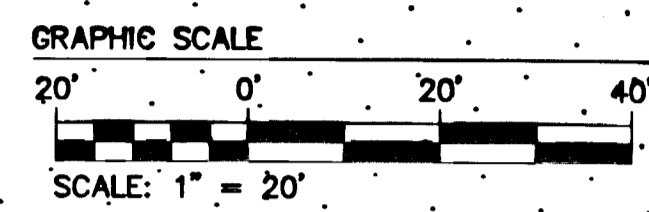
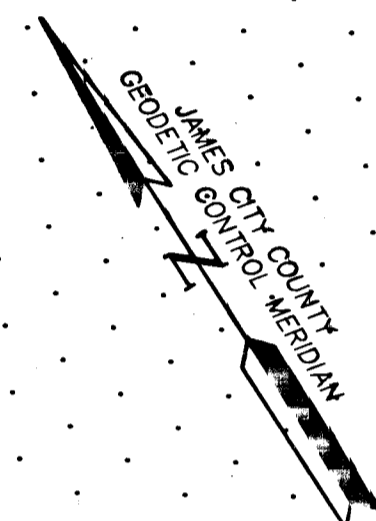
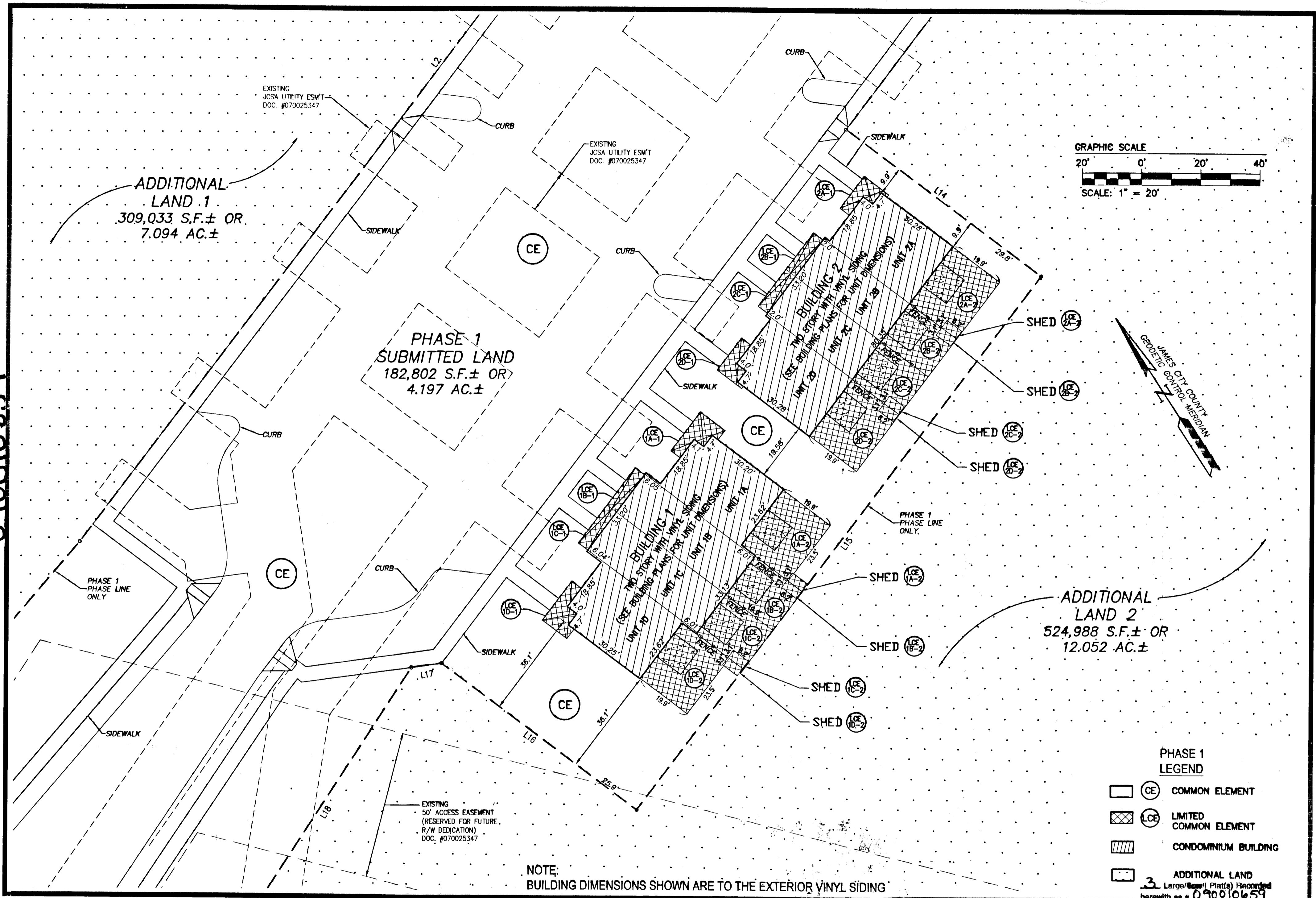


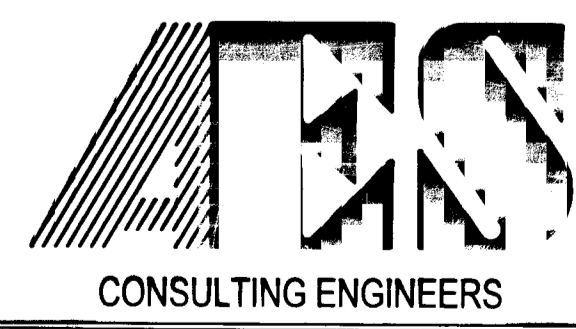
090010659



PHASE 1 LEGEND

- CE COMMON ELEMENT
- LCE LIMITED COMMON ELEMENT
- CONDOMINIUM BUILDING
- 3 ADDITIONAL LAND
Large/Small Plat(s) Recorded herewith as # 090010659

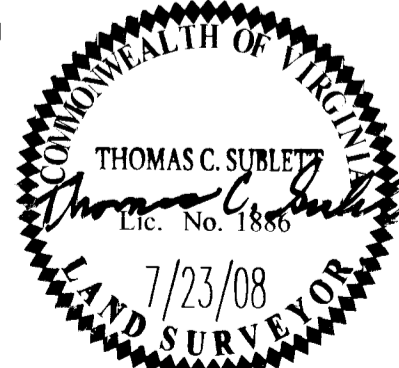
NOTE:
BUILDING DIMENSIONS SHOWN ARE TO THE EXTERIOR VINYL SIDING



5248 Olde Towne Road, Suite 1
Williamsburg, Virginia 23188
(757) 253-0040
Fax (757) 220-8994

**PLAT OF CONDOMINIUM
WEATHERLY AT WHITEHALL
PHASE 1**

STONEHOUSE DISTRICT JAMES CITY COUNTY VIRGINIA



City of Williamsburg & County of James City		Circuit Court: This PLAT was recorded on	
		4-15-2009	
at 1:57 PM, PG			
DOCUMENT # 090010659			
BETSY B. WOOLRIDGE, CLERK			
<i>Betsy B. Woolridge</i> Clerk			
1 8/26/08		ADDED SHEETS	
No.	DATE	REVISION / COMMENT / NOTE	REVIEWED BY
			JFS TCS

Designed	Drawn
AES	JFS
Scale	Date
1"=20'	7/23/08
Project No.	
9048-09	
Drawing No.	
3 OF 3	

WILLIAMSBURG • RICHMOND • GLOUCESTER • FREDERICKSBURG