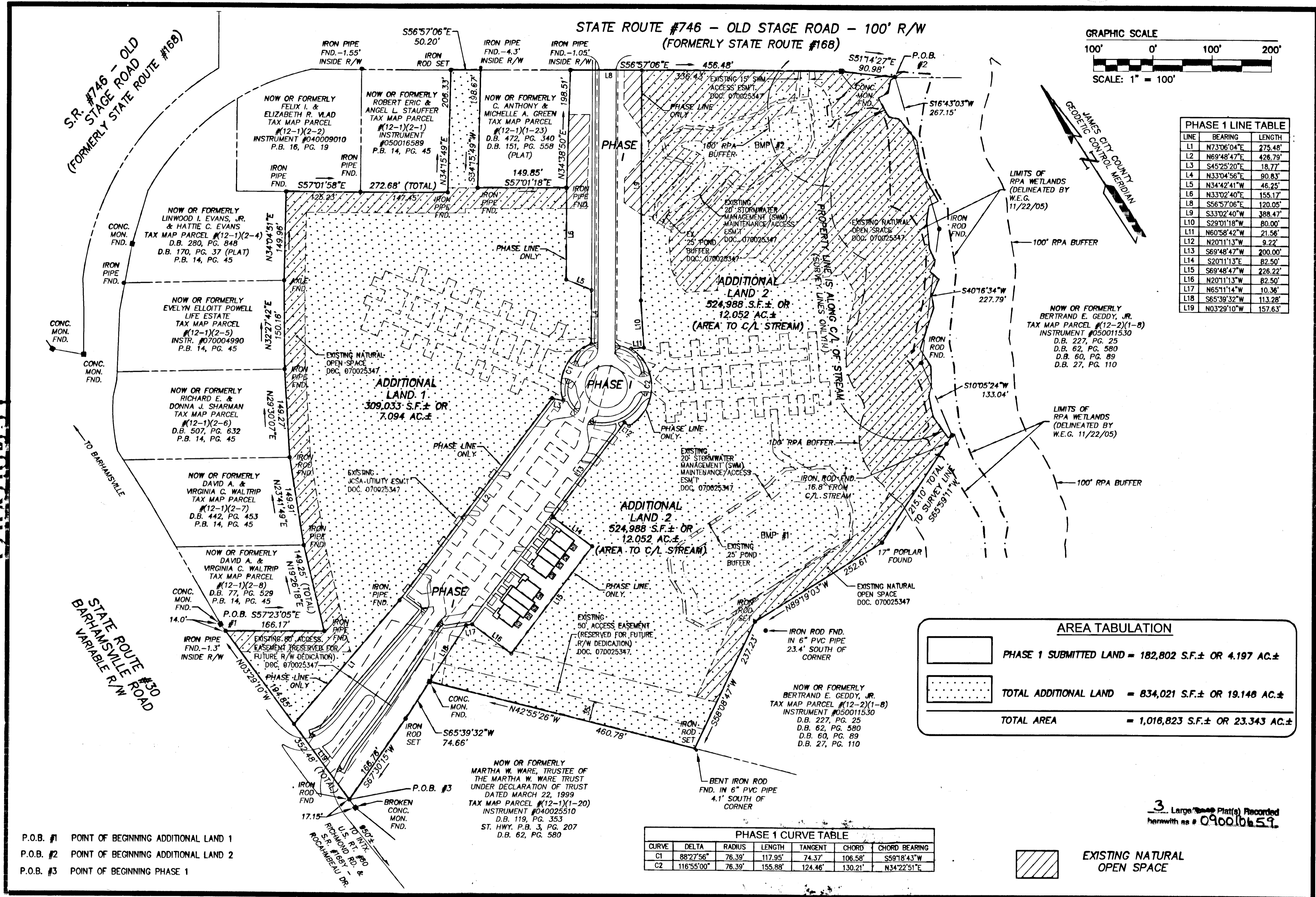


090010659



**PHASE 1 LINE TABLE**

LINE	BEARING	LENGTH
L1	N73°06'04\"E	275.48'
L2	N69°48'47\"E	426.79'
L3	S45°25'20\"E	18.77'
L4	N33°04'56\"E	90.83'
L5	N34°42'41\"W	46.25'
L6	N33°02'40\"E	155.17'
L8	S56°57'06\"E	120.05'
L9	S33°02'40\"W	388.47'
L10	S29°01'18\"W	80.00'
L11	N6°58'42\"W	21.56'
L12	N2°01'13\"W	9.22'
L13	S69°48'47\"W	200.00'
L14	S2°01'13\"E	82.50'
L15	S69°48'47\"W	226.22'
L16	N2°01'13\"W	82.50'
L17	N65°11'4\"W	10.36'
L18	S65°39'32\"W	113.28'
L19	N03°29'10\"W	157.63'

**AREA TABULATION**

	PHASE 1 SUBMITTED LAND = 182,802 S.F. ± OR 4.197 AC. ±
	TOTAL ADDITIONAL LAND = 834,021 S.F. ± OR 19.148 AC. ±
	TOTAL AREA = 1,016,823 S.F. ± OR 23.343 AC. ±

**PHASE 1 CURVE TABLE**

CURVE	DELTA	RADIUS	LENGTH	TANGENT	CHORD	CHORD BEARING
C1	88°27'56\"	76.39'	117.95'	74.37'	106.58'	S59°18'43\"W
C2	116°55'00\"	76.39'	155.88'	124.46'	130.21'	N34°22'51\"E

P.O.B. #1 POINT OF BEGINNING ADDITIONAL LAND 1  
P.O.B. #2 POINT OF BEGINNING ADDITIONAL LAND 2  
P.O.B. #3 POINT OF BEGINNING PHASE 1

3 Large Plat(s) Recorded herewith as # 090010659.

**T&N CONSULTING ENGINEERS**  
5248 Olde Towne Road, Suite 1  
Williamsburg, Virginia 23188  
(757) 253-0040  
Fax (757) 220-8994

**PLAT OF CONDOMINIUM WEATHERLY AT WHITEHALL PHASE 1**

STONEHOUSE DISTRICT JAMES CITY COUNTY VIRGINIA

City of Williamsburg & County of James City  
Circuit Court: This PLAT was recorded on 4-15-2009  
at 1:57 PM, PG.         
DOCUMENT # 090010659  
BETSY B. WOOLRIDGE, CLERK  
Betsy B. Woolridge Clerk

No.	DATE	REVISION / COMMENT / NOTE
1	8/26/08	ADDED SHEETS

Designed	Drawn
AES	JFS
Scale	Date
1"=100'	7/23/08
Project No.	
9048-09	
Drawing No.	
2 OF 3	