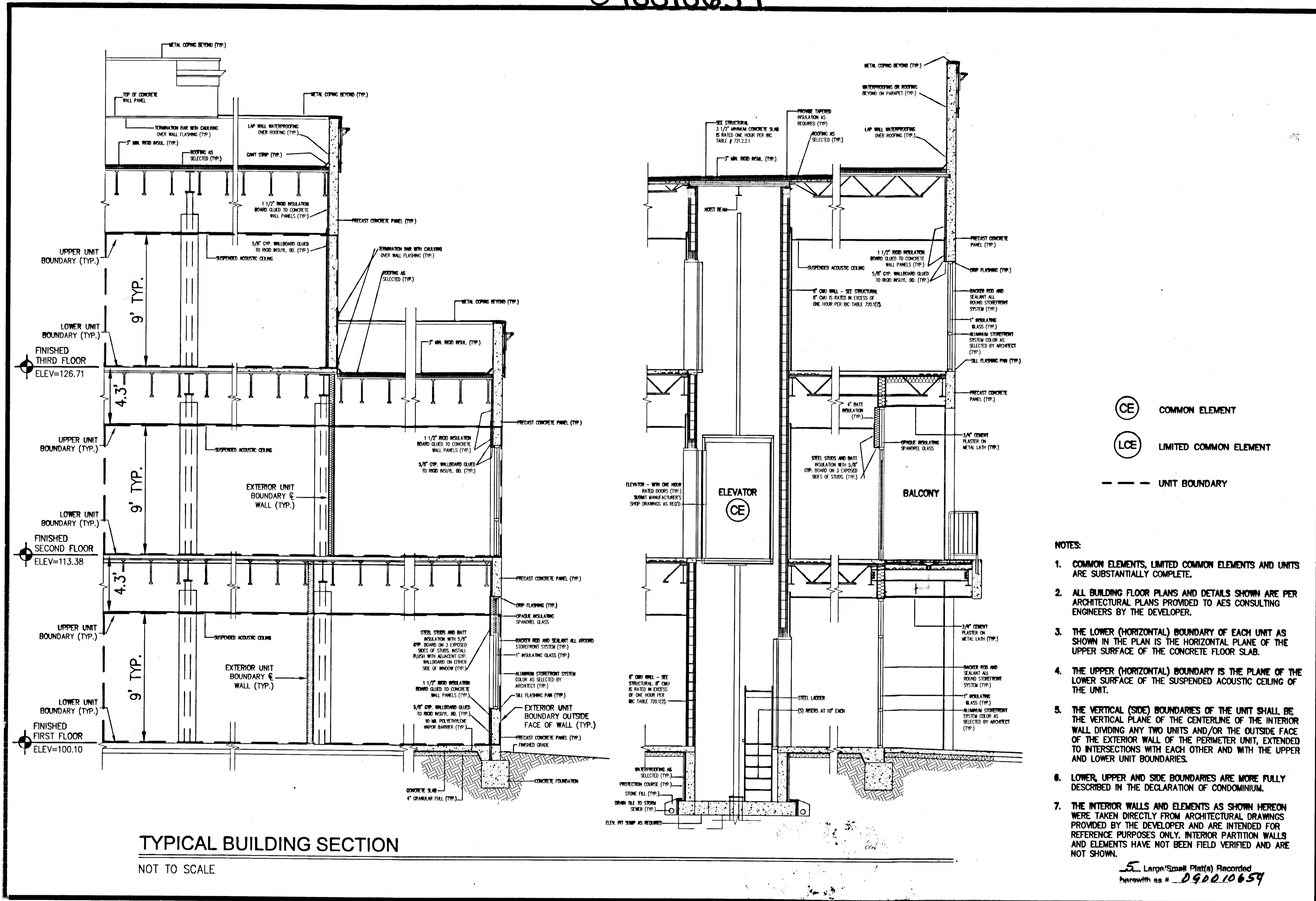


090010654

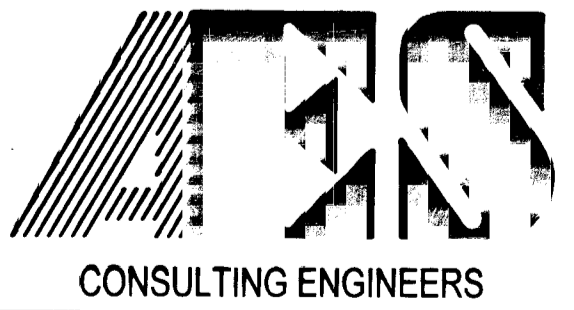


TYPICAL BUILDING SECTION  
NOT TO SCALE

- NOTES:
1. COMMON ELEMENTS, LIMITED COMMON ELEMENTS AND UNITS ARE SUBSTANTIALLY COMPLETE.
  2. ALL BUILDING FLOOR PLANS AND DETAILS SHOWN ARE PER ARCHITECTURAL PLANS PROVIDED TO AES CONSULTING ENGINEERS BY THE DEVELOPER.
  3. THE LOWER (HORIZONTAL) BOUNDARY OF EACH UNIT AS SHOWN IN THE PLAN IS THE HORIZONTAL PLANE OF THE UPPER SURFACE OF THE CONCRETE FLOOR SLAB.
  4. THE UPPER (HORIZONTAL) BOUNDARY IS THE PLANE OF THE LOWER SURFACE OF THE SUSPENDED ACOUSTIC CEILING OF THE UNIT.
  5. THE VERTICAL (SIDE) BOUNDARIES OF THE UNIT SHALL BE THE VERTICAL PLANE OF THE CENTERLINE OF THE INTERIOR WALL DIVIDING ANY TWO UNITS AND/OR THE OUTSIDE FACE OF THE EXTERIOR WALL OF THE PERIMETER UNIT, EXTENDED TO INTERSECTIONS WITH EACH OTHER AND WITH THE UPPER AND LOWER UNIT BOUNDARIES.
  6. LOWER, UPPER AND SIDE BOUNDARIES ARE MORE FULLY DESCRIBED IN THE DECLARATION OF CONDOMINIUM.
  7. THE INTERIOR WALLS AND ELEMENTS AS SHOWN HEREON WERE TAKEN DIRECTLY FROM ARCHITECTURAL DRAWINGS PROVIDED BY THE DEVELOPER AND ARE INTENDED FOR REFERENCE PURPOSES ONLY. INTERIOR PARTITION WALLS AND ELEMENTS HAVE NOT BEEN FIELD VERIFIED AND ARE NOT SHOWN.

5. Large/Small Plat(s) Recorded herewith as # 090010654

S:\Jobs\663215615D-VenturEast\dwg\SunPlat\Phase 09 Unit 210\663215615D Condo Unit 210 05 SECTIONS.dwg, 9/8/2008 3:19:25 PM, Tony Taylor



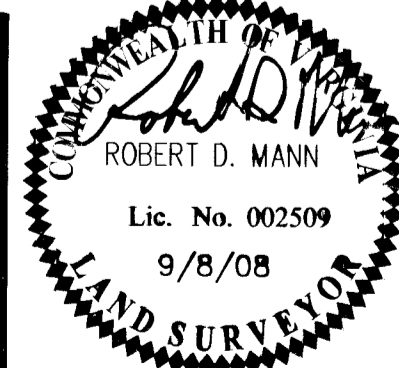
5248 Olde Towne Road, Suite 1  
Williamsburg, Virginia 23188  
(757) 253-0040  
Fax (757) 220-8994

WILLIAMSBURG • RICHMOND • GLOUCESTER • FREDERICKSBURG

"EXHIBIT 1"

PLAN OF CONDOMINIUM  
**PATRIOT PARK, A CONDOMINIUM**  
PHASE 9, UNIT 210  
OWNER/DEVELOPER: PATRIOT DEVELOPMENT ASSOCIATES, LLC

BERKELEY DISTRICT      JAMES CITY COUNTY      VIRGINIA



City of Williamsburg & County of James City Circuit Court: This PLAT was recorded on <i>15 April 2009</i> at <i>1:23</i> AM/PM, PB PG DOCUMENT # <i>090010654</i> BETSY B. WOOLRIDGE, CLERK <i>Betsy Woolridge</i> Clerk		
No.	DATE	REVISION / COMMENT / NOTE

Designed AES	Drawn AWT
Scale NTS	Date 9/8/08
Project No. 6632-0-15D	
Drawing No. 5 of 5	
REVISION BY	REVIEWED BY