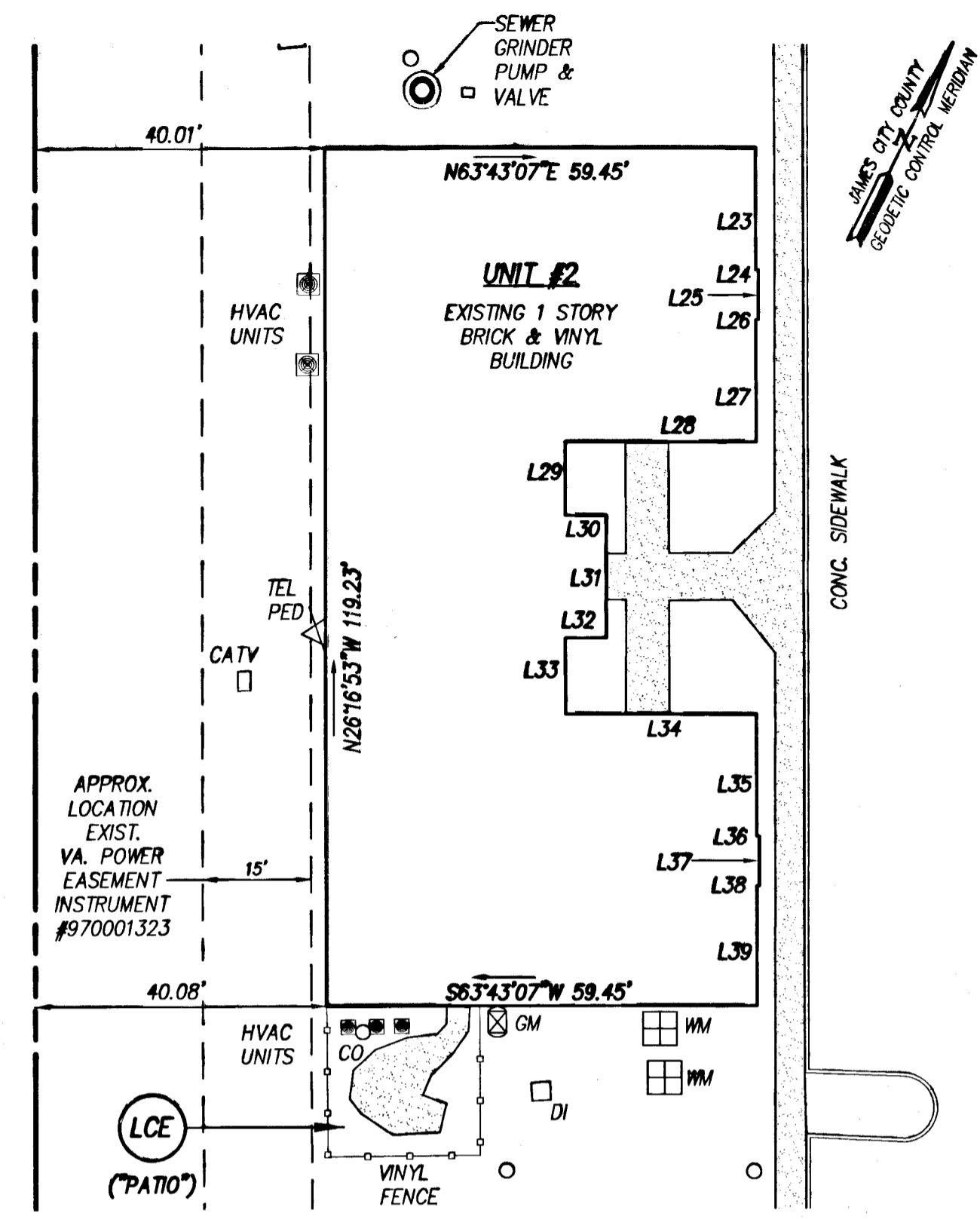


INSET UNIT #1
SCALE: 1"=20'

UNIT #1

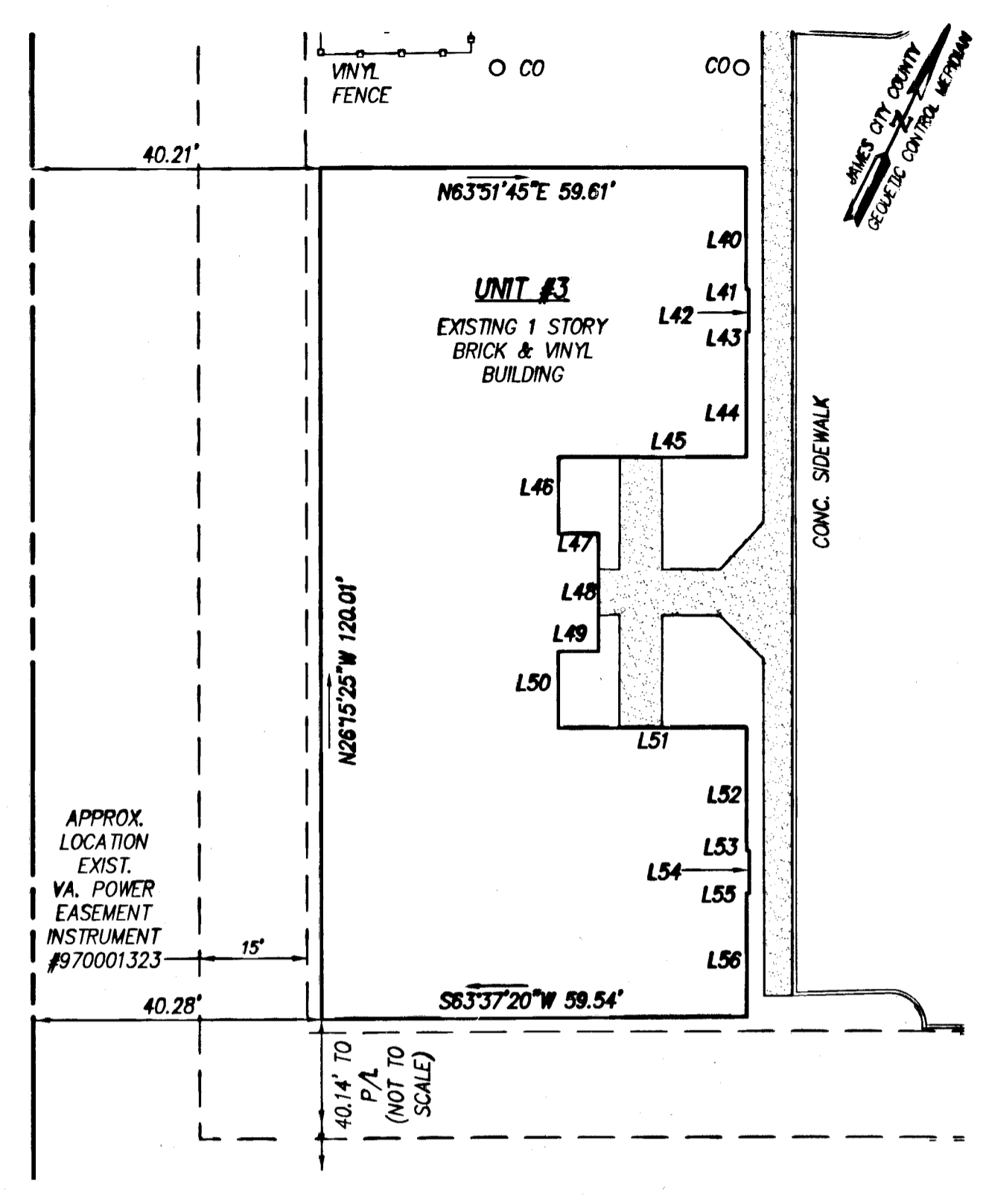
LINE	BEARING	DISTANCE
L1	S26°14'51"E	17.12'
L2	N63°45'09"E	0.35'
L3	S26°14'51"E	6.70'
L4	S63°45'09"W	0.35'
L5	S26°14'51"E	17.21'
L6	S63°45'09"W	26.39'
L7	S26°14'51"E	10.81'
L8	N63°45'09"E	5.59'
L9	S26°14'51"E	16.03'
L10	S63°45'09"W	5.59'
L11	S26°14'51"E	10.81'
L12	N63°45'09"E	26.39'
L13	S26°14'51"E	17.14'
L14	N63°45'09"E	0.35'
L15	S26°14'51"E	6.71'
L16	S63°45'09"W	0.35'
L17	S26°14'51"E	17.00'
L18	S63°45'09"W	24.40'
L19	S26°14'51"E	0.30'
L20	S63°45'09"W	12.04'
L21	N26°14'51"W	0.30'
L22	S63°45'09"W	23.11'



INSET UNIT #2
SCALE: 1"=20'

UNIT #2

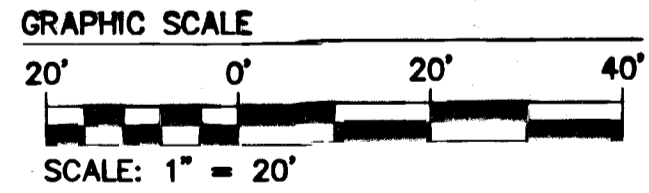
LINE	BEARING	DISTANCE
L23	S26°16'53"E	16.90'
L24	N63°43'07"E	0.35'
L25	S26°16'53"E	6.90'
L26	S63°43'07"W	0.35'
L27	S26°16'53"E	17.00'
L28	S63°43'07"W	26.35'
L29	S26°16'53"E	10.26'
L30	N63°43'07"E	5.64'
L31	S26°16'53"E	17.07'
L32	S63°43'07"W	5.64'
L33	S26°16'53"E	10.60'
L34	N63°43'07"E	26.35'
L35	S26°16'53"E	16.98'
L36	N63°43'07"E	0.35'
L37	S26°16'53"E	6.89'
L38	S63°43'07"W	0.35'
L39	S26°16'53"E	16.63'



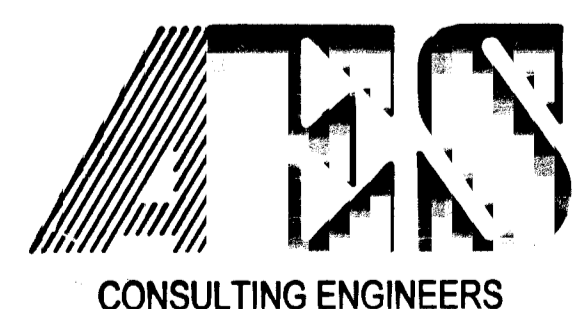
INSET UNIT #3
SCALE: 1"=20'

UNIT #3

LINE	BEARING	DISTANCE
L40	S26°14'22"E	17.20'
L41	N63°45'38"E	0.35'
L42	S26°14'22"E	5.98'
L43	S63°45'38"W	0.35'
L44	S26°14'22"E	17.60'
L45	S63°45'38"W	26.30'
L46	S26°14'22"E	10.82'
L47	N63°45'38"E	5.60'
L48	S26°14'22"E	16.56'
L49	S63°45'38"W	5.65'
L50	S26°14'22"E	10.80'
L51	N63°45'38"E	26.32'
L52	S26°14'22"E	17.40'
L53	N63°45'38"E	0.35'
L54	S26°14'22"E	6.00'
L55	S63°45'38"W	0.35'
L56	S26°14'22"E	17.40'



5 Large/Small Plat(s) Recorded
herewith as # 090008301

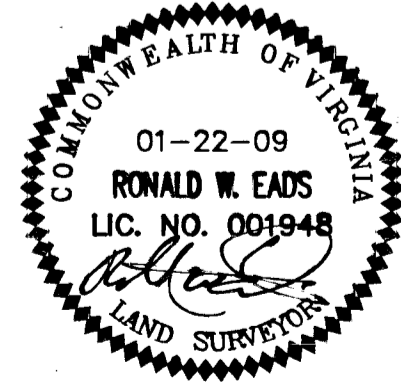


5248 Olde Towne Road, Suite 1
Williamsburg, Virginia 23188
(757) 253-0040
Fax (757) 220-8994

WILLIAMSBURG • RICHMOND • GLOUCESTER • FREDERICKSBURG

EXHIBIT "C"
PLAT FOR CONDOMINIUM
PHASE 1
"GREENSPRINGS COMMONS", A CONDOMINIUM

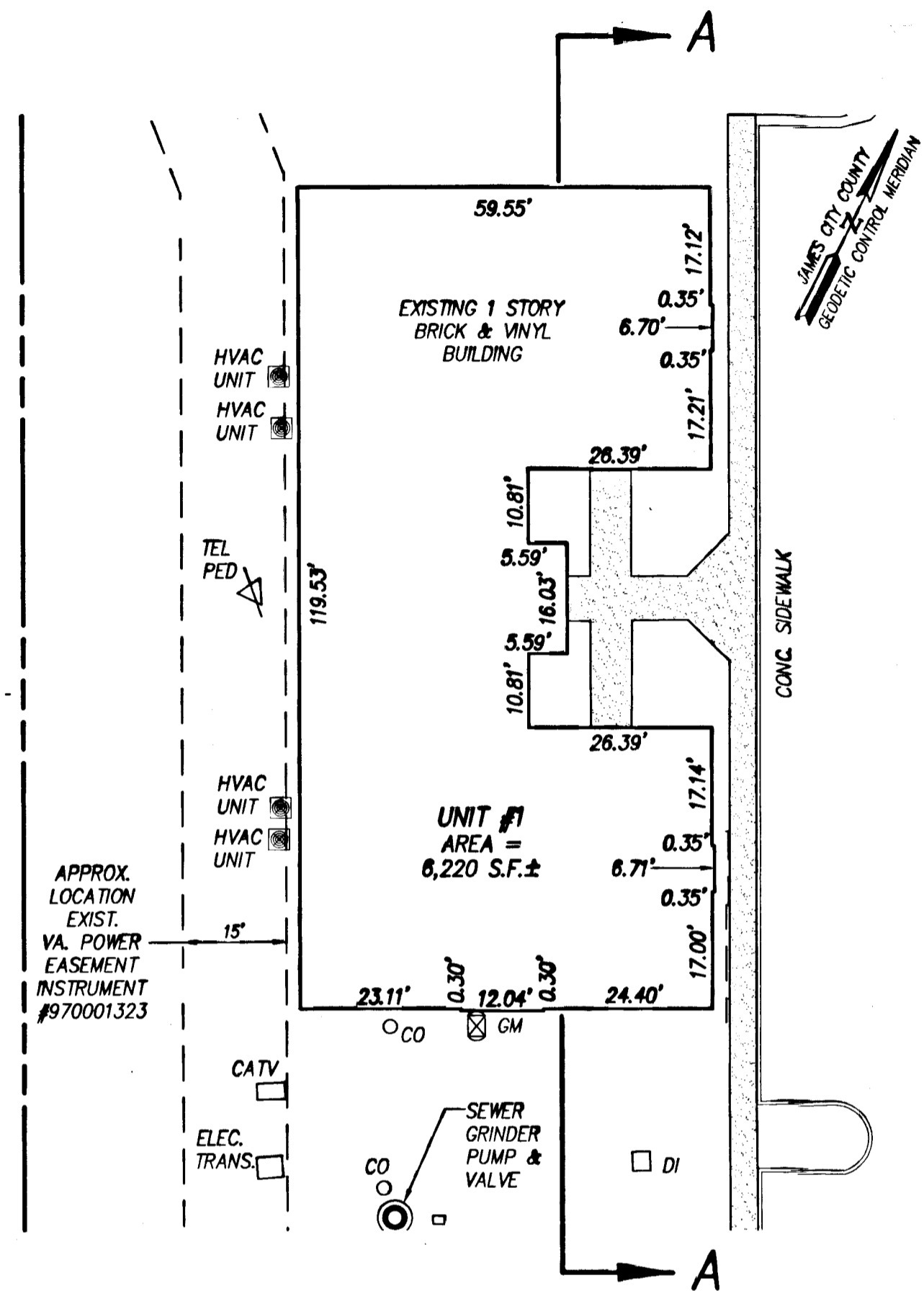
JAMESTOWN DISTRICT JAMES CITY COUNTY VIRGINIA



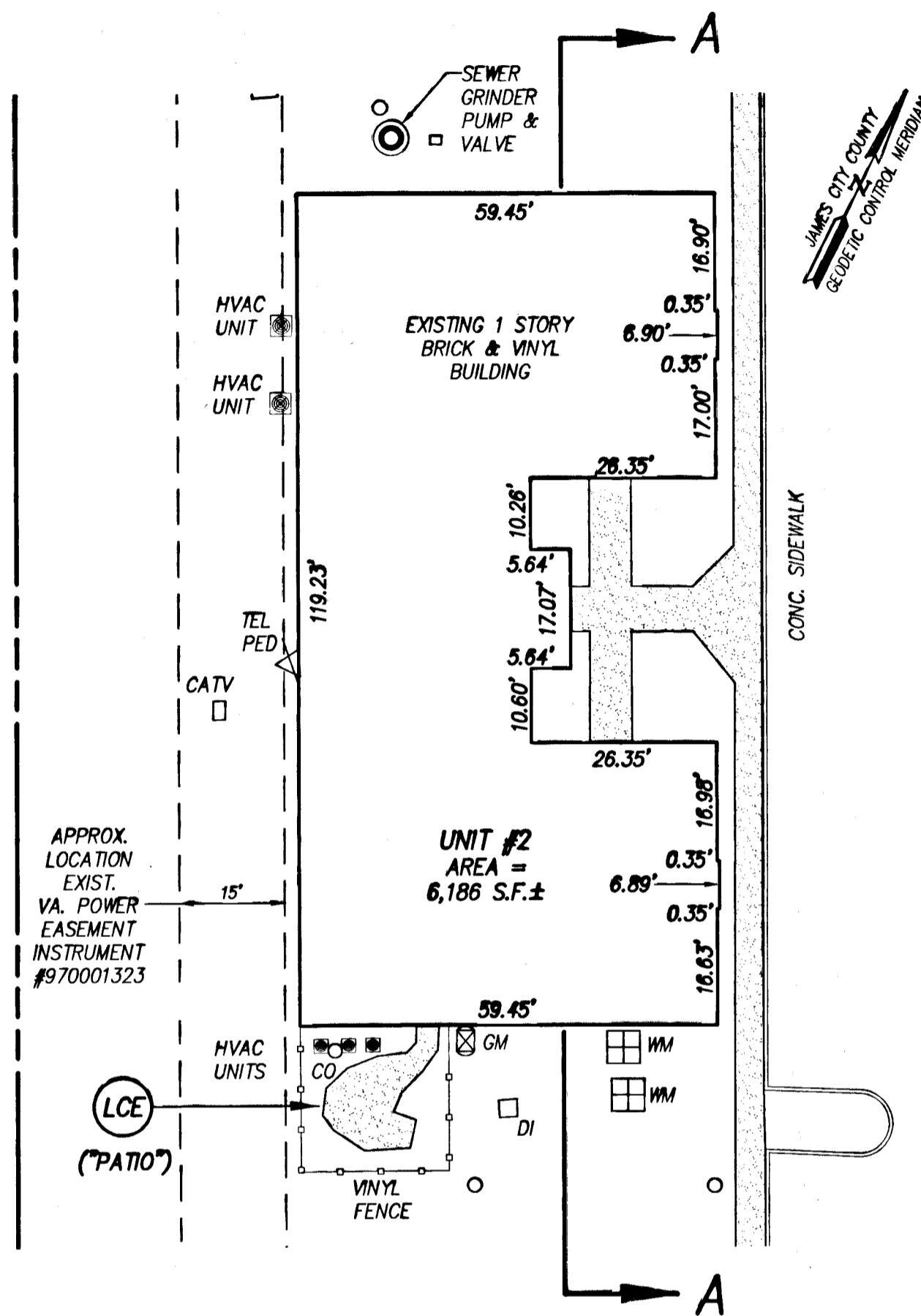
City of Williamsburg & County of James City		Circuit Court: This PLAT was recorded on	
		at 12:04 PM, PB PG	
		DOCUMENT # 090008301	
		BETSY B. WOOLRIDGE, CLERK	
		<i>Betsy B. Woolridge</i> Clerk	
No.	DATE	REVISION / COMMENT / NOTE	BY

Designed AES	Drawn JDB/RWL
Scale 1" = 20'	Date 01/22/09
Project No. 9997-01	
Drawing No. 3 of 5	

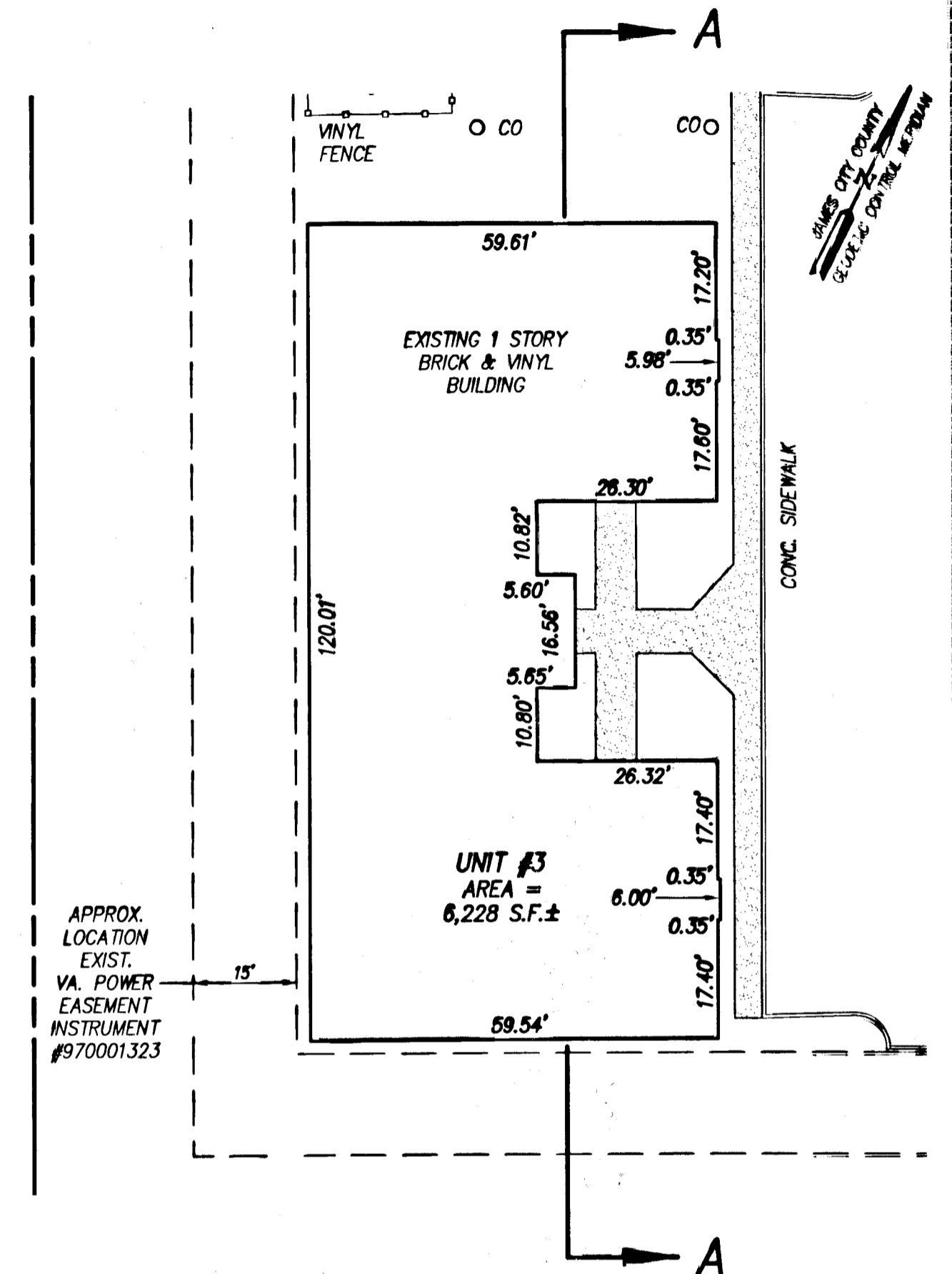
090008301



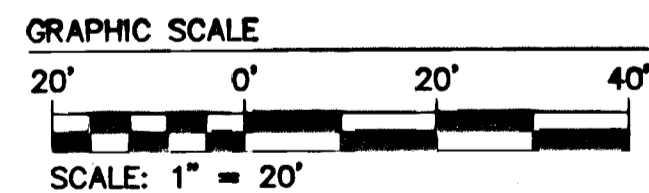
PLAN VIEW - UNIT #1
SCALE: 1"=20'



PLAN VIEW - UNIT #2
SCALE: 1"=20'

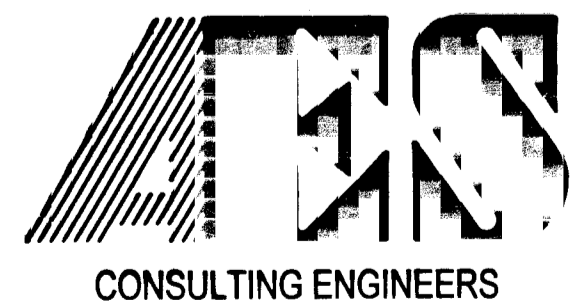


PLAN VIEW - UNIT #3
SCALE: 1"=20'



THE UNDERSIGNED VIRGINIA LAND SURVEYOR HEREBY CERTIFIES TO THE BEST OF MY KNOWLEDGE AND BELIEF, THAT I HAVE READ SECTION 55-79.58(B) OF THE CODE OF VIRGINIA AND FIND THE PLANS TO BE ACCURATE AND IN COMPLIANCE WITH THE CODE. UNITS #1, #2 AND #3 ARE SUBSTANTIALLY COMPLETE.

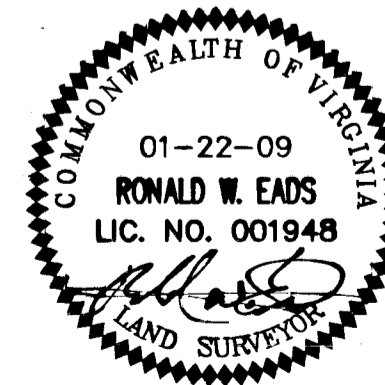
Ronald W. Eads
RONALD W. EADS, L.S. #001948
5 Large/Small Plat(s) Recorded
herewith as # 090008301



5248 Olde Towne Road, Suite 1
Williamsburg, Virginia 23188
(757) 253-0040
Fax (757) 220-8994

WILLIAMSBURG • RICHMOND • GLOUCESTER • FREDERICKSBURG

EXHIBIT "D"
PLAN FOR CONDOMINIUM
PHASE 1
"GREENSPRINGS COMMONS", A CONDOMINIUM
JAMESTOWN DISTRICT JAMES CITY COUNTY VIRGINIA



No.	DATE	REVISION / COMMENT / NOTE	BY

City of Williamsburg & County of James City
Circuit Court: This PLAT was recorded on
24 March 2009
at 12:03 AM/PM, PG. 1
DOCUMENT # 090008301
BETSY B. WOOLRIDGE, CLERK
Betsy B. Woolridge Clerk

Designed AES	Drawn JDR/RWE
Scale 1" = 20'	Date 01/22/09
Project No. 9997-01	
Drawing No. 4 of 5	

09.0008301



1.7'
TOP OF CHIMNEY ELEVATION = 53.6'
ROOF PEAK ELEVATION = 51.9'
21.8'
0.5'
FINISH FLOOR ELEVATION = 30.1'
GROUND ELEVATION = 29.6'

UNIT #1 VIEW A-A
SCALE: NOT TO SCALE



1.80'
TOP OF CHIMNEY ELEVATION = 54.9'
ROOF PEAK ELEVATION = 53.1'
21.75'
0.15'
FINISH FLOOR ELEVATION = 31.35'
GROUND ELEVATION = 31.2'

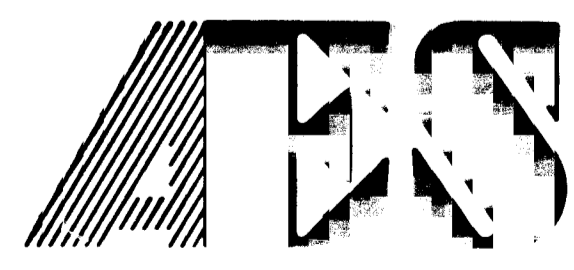
UNIT #2 VIEW A-A
SCALE: NOT TO SCALE



1.25'
TOP OF CHIMNEY ELEVATION = 56.0'
ROOF PEAK ELEVATION = 54.75'
22.45'
NO FINISH FLOOR ELEVATION
GROUND ELEVATION = 32.3'

UNIT #3 VIEW A-A
SCALE: NOT TO SCALE

5 Large/Small Plat(s) Recorded
herewith as # 090008301

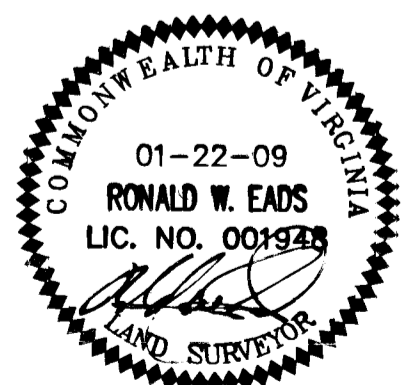


CONSULTING ENGINEERS

WILLIAMSBURG • RICHMOND • GLOUCESTER • FREDERICKSBURG

5248 Olde Towne Road, Suite 1
Williamsburg, Virginia 23188
(757) 253-0040
Fax (757) 220-8994

EXHIBIT "D"
PLAN FOR CONDOMINIUM
PHASE 1
"GREENSPRINGS COMMONS", A CONDOMINIUM
JAMESTOWN DISTRICT JAMES CITY COUNTY VIRGINIA



No.	DATE	REVISION / COMMENT / NOTE	BY

City of Williamsburg & County of James City
Circuit Court: This PLAT was recorded on
24 March 2009
at *12:04* AM/PM, PG.
DOCUMENT # *090008301*
BETSY B. WOOLRIDGE, CLERK
Betsy Woolridge Clerk

Designed AES	Drawn JOB/RWF
Scale 1" = 20'	Date 01/22/09
Project No. 9997-01	
Drawing No. 5 of 5	