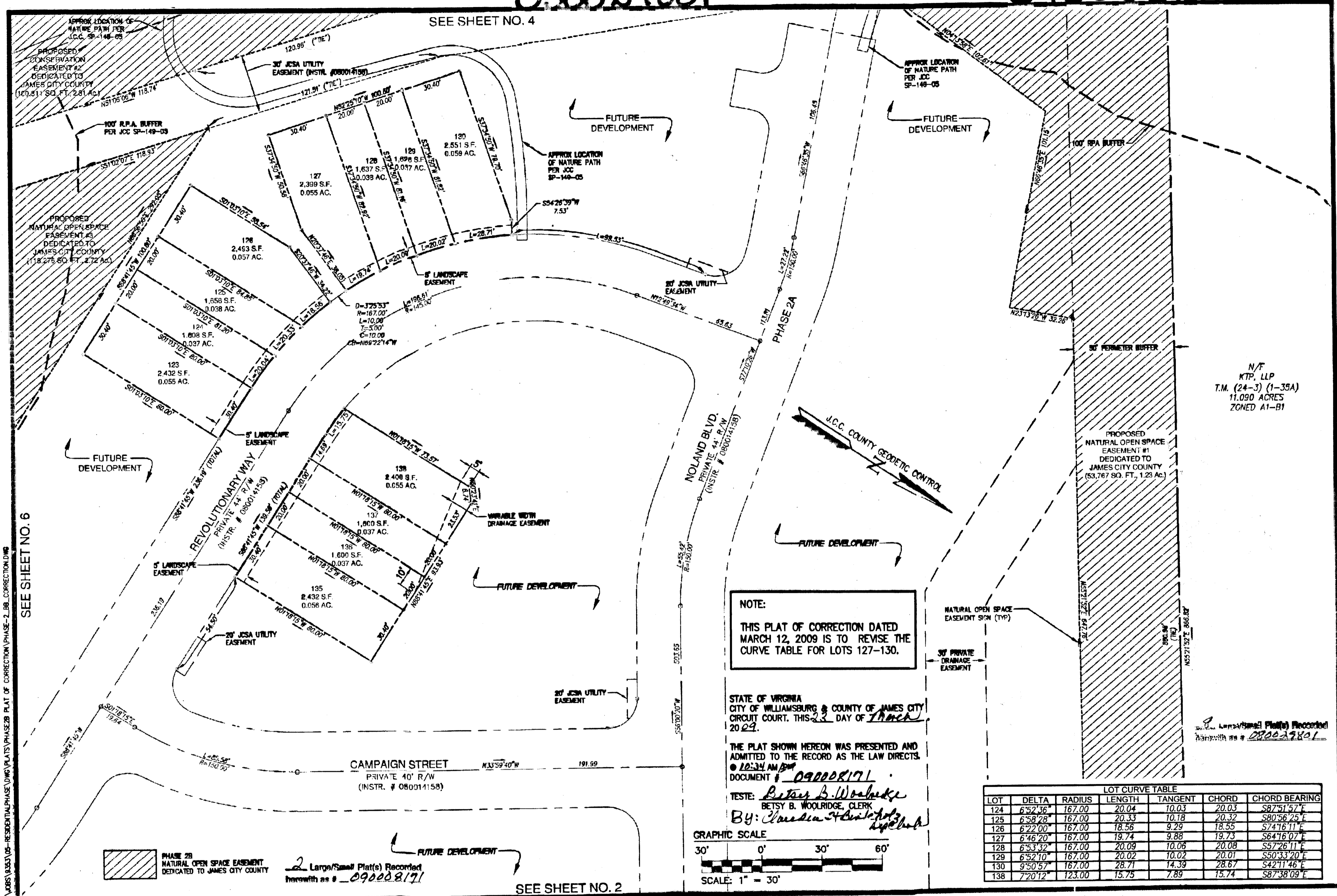


090029801

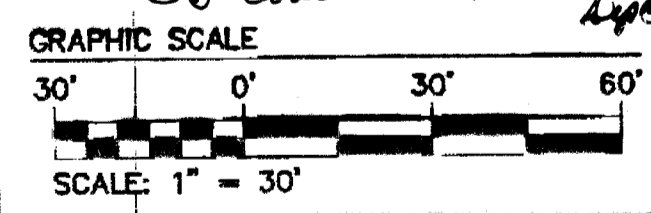
090008171

SEE SHEET NO. 4



**NOTE:**  
THIS PLAT OF CORRECTION DATED MARCH 12, 2009 IS TO REVISE THE CURVE TABLE FOR LOTS 127-130.

STATE OF VIRGINIA  
CITY OF WILLIAMSBURG & COUNTY OF JAMES CITY  
CIRCUIT COURT. THIS 23 DAY OF March 20 09.  
THE PLAT SHOWN HEREON WAS PRESENTED AND ADMITTED TO THE RECORD AS THE LAW DIRECTS.  
DOCUMENT # 090008171  
TESTE: *Betsy B. Woolridge*  
BETSY B. WOOLRIDGE, CLERK  
By: *Thomas C. Sublett*



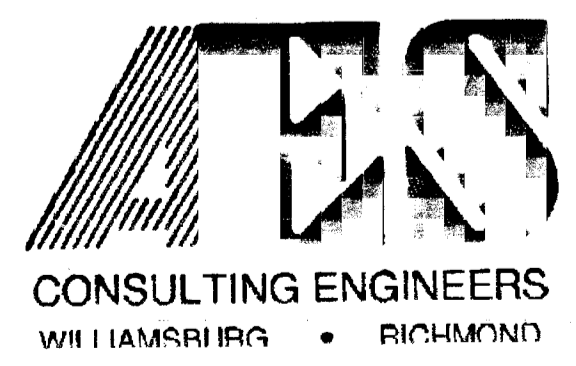
LOT	DELTA	RADIUS	LENGTH	TANGENT	CHORD	CHORD BEARING
124	6°52'36"	167.00	20.04	10.03	20.03	S87°51'57"E
125	6°58'28"	167.00	20.33	10.18	20.32	S80°56'25"E
126	6°22'00"	167.00	18.56	9.29	18.55	S74°16'11"E
127	6°46'20"	167.00	19.74	9.88	19.73	S64°16'07"E
128	6°53'32"	167.00	20.09	10.06	20.08	S57°26'11"E
129	6°52'10"	167.00	20.02	10.02	20.01	S50°33'20"E
130	9°50'57"	167.00	28.71	14.39	28.67	S42°11'46"E
138	7°20'12"	123.00	15.75	7.89	15.74	S87°38'09"E

SEE SHEET NO. 6

PHASE 2B  
NATURAL OPEN SPACE EASEMENT  
DEDICATED TO JAMES CITY COUNTY

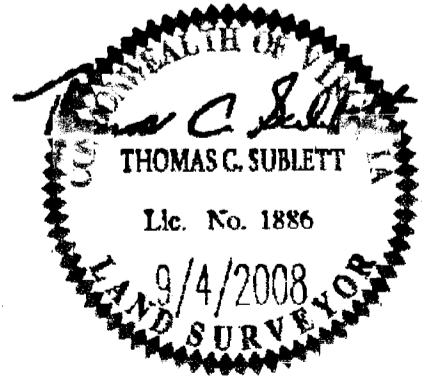
2 Large/Small Plat(s) Recorded  
herewith as # 090008171

SEE SHEET NO. 2



5248 Olde Towne Road, Suite 1  
Williamsburg, Virginia 23188  
(757) 253-0040  
Fax (757) 220-8994

PLAT OF CORRECTION  
PHASE 2-B  
LIBERTY CROSSING  
LOTS  
69-78, 108-112, 123-130, 135-138 &  
NATURAL OPEN SPACE  
STONEHOUSE DISTRICT JAMES CITY COUNTY VIRGINIA



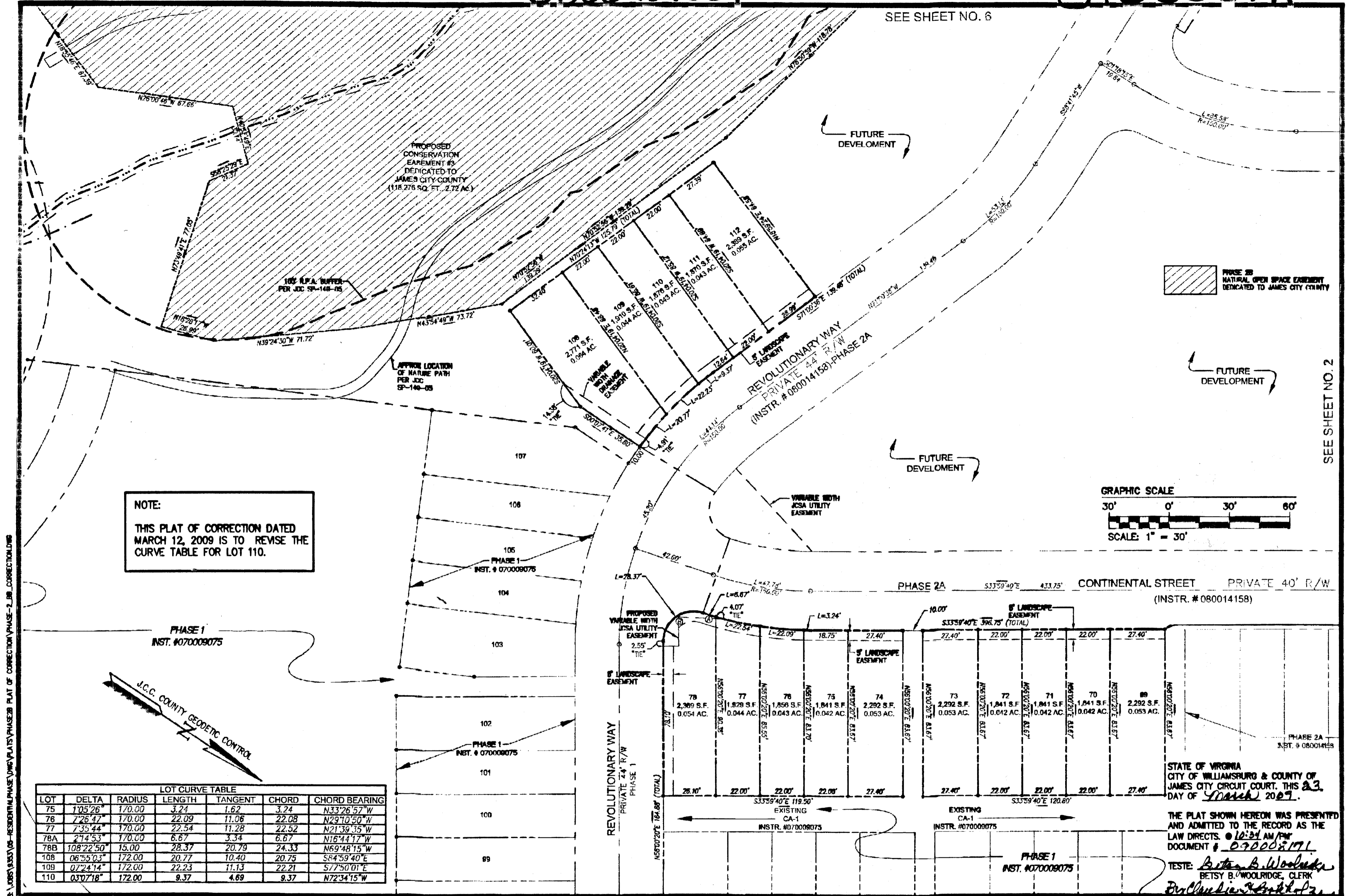
No.	DATE	REVISION / COMMENT / NOTE	BY

City of Williamsburg & County of James City Circuit Court. This PLAT was recorded on 11 November 2008 at 10:06 AM/PM: PB - PG DOCUMENT # 090029801 BETSY B. WOOLRIDGE, CLERK <i>Betsy B. Woolridge</i> Clerk	Designed AES	Drawn MEG
Scale 1" = 30'	Date 9/04/08	Project No. 9353-05
		Drawing No. 1 OF 2

080024801

090008171

SEE SHEET NO. 6



S:\WORK\2008\RESIDENTIAL\PHASE 2\PHASE 2B\PLAT OF CORRECTION PHASE 2-B CORRECTING CURVE

SEE SHEET NO. 2

**CONSULTING ENGINEERS**  
WILLIAMSBURG • RICHMOND

8 Large/Small Plat(s) Recorded  
herein as # 080024801

5248 Olde Towne Road, Suite 1  
Williamsburg, Virginia 23188  
(757) 253-0040  
Fax (757) 220-8994

2 Large/Small Plat(s) Recorded  
herein as # 090008171

**PLAT OF CORRECTION**  
**PHASE 2-B**  
**LIBERTY CROSSING**  
LOTS  
69-78, 108-112, 123-130, 135-138 &  
NATURAL OPEN SPACE  
STONEHOUSE DISTRICT JAMES CITY COUNTY VIRGINIA

THOMAS C. SUBLETT  
Lic. No. 1886  
9/4/2008  
LAND SURVEYOR

No.	DATE	REVISION / COMMENT / NOTE	BY

City of Williamsburg & County of James City  
Circuit Court: This PLAT was recorded on  
at 10:06 AM/PM: PG  
DOCUMENT # 080024801  
BETSY B. WOOLRIDGE, CLERK  
Betsy B. Woolridge Clerk

Designed AES	Drawn MEG
Scale 1"=30'	Date 9/04/08
Project No. 9353-05	Drawing No. 2 OF 2

STATE OF VIRGINIA  
CITY OF WILLIAMSBURG & COUNTY OF  
JAMES CITY CIRCUIT COURT, THIS 23  
DAY OF March 2009.

THE PLAT SHOWN HEREON WAS PRESENTED  
AND ADMITTED TO THE RECORD AS THE  
LAW DIRECTS. 10:06 AM/PM  
DOCUMENT # 080024801

TESTE: *Betsy B. Woolridge*  
BETSY B. WOOLRIDGE, CLERK