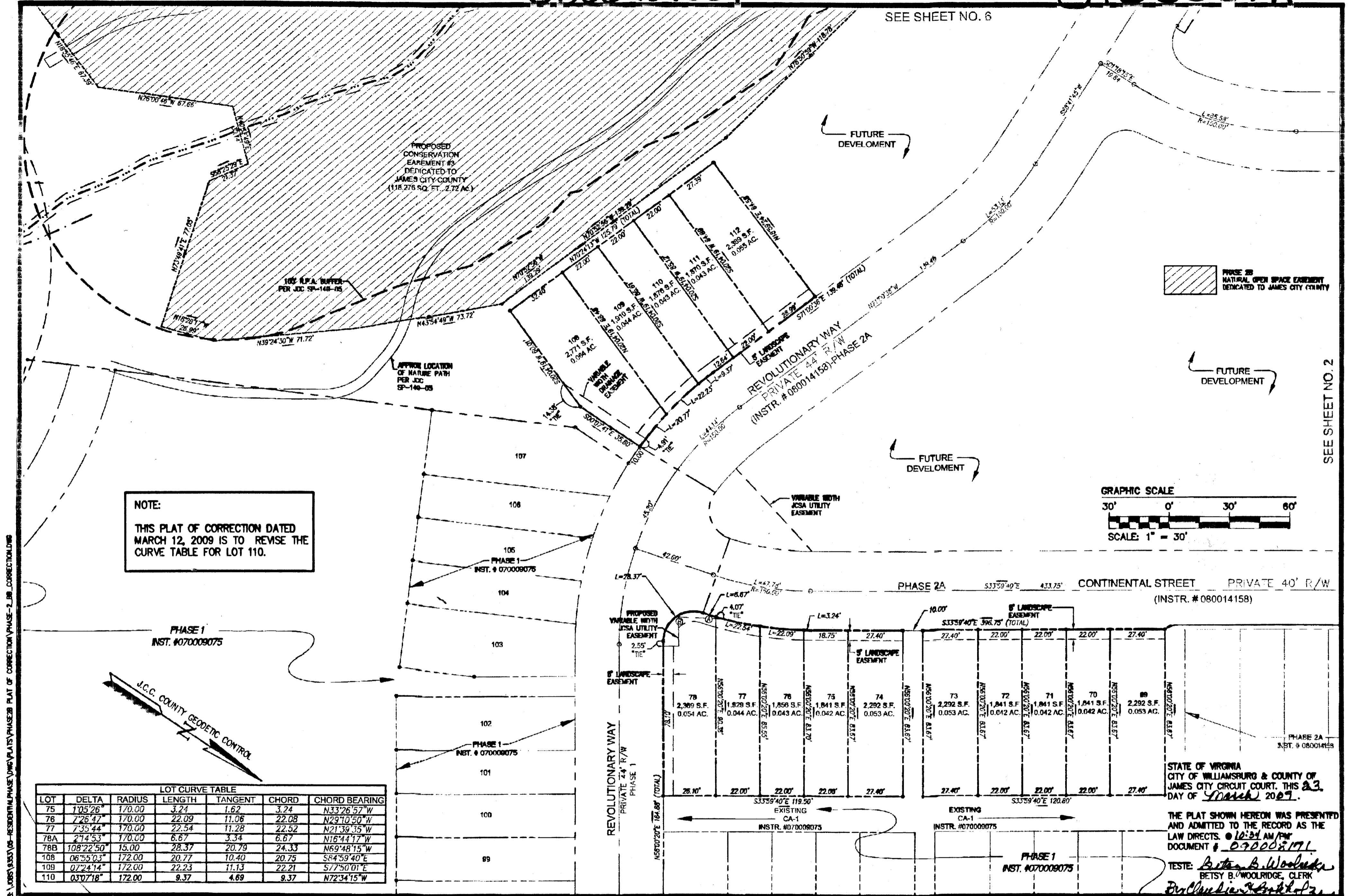


080024801

090008171

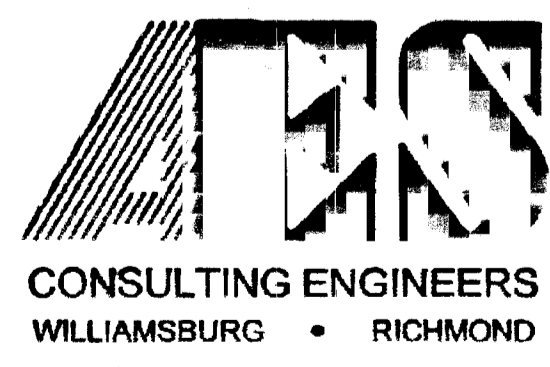
SEE SHEET NO. 6



LOT	DELTA	RADIUS	LENGTH	TANGENT	CHORD	CHORD BEARING
75	105°26'	170.00	3.24	1.62	3.24	N33°26'57"W
76	72°47'	170.00	22.09	11.06	22.08	N29°10'50"W
77	73°44'	170.00	22.54	11.28	22.52	N21°39'35"W
78A	214°53'	170.00	6.67	3.34	6.67	N16°44'17"W
78B	108°22'50"	15.00	28.37	20.79	24.33	N69°48'15"W
108	06°55'03"	172.00	20.77	10.40	20.75	S84°59'40"E
109	07°24'14"	172.00	22.23	11.13	22.21	S77°50'01"E
110	030°7'18"	172.00	9.37	4.69	9.37	N72°34'15"W

S:\WORK\2008\RESIDENTIAL\PHASE 2\PHASE 2-B CORRECTING\PHASE 2-B CORRECTING.DWG

SEE SHEET NO. 2

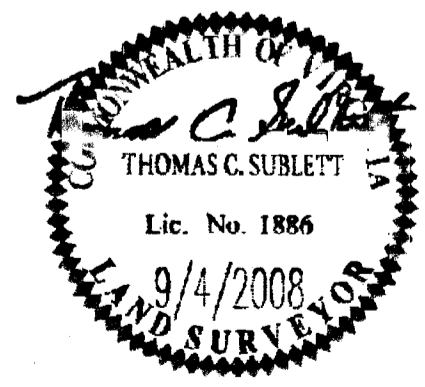


8 Large/Small Plat(s) Recorded
herein as # 080024801

5248 Olde Towne Road, Suite 1
Williamsburg, Virginia 23188
(757) 253-0040
Fax (757) 220-8994

2 Large/Small Plat(s) Recorded
herein as # 090008171

PLAT OF CORRECTION
PHASE 2-B
LIBERTY CROSSING
LOTS
69-78, 108-112, 123-130, 135-138 &
NATURAL OPEN SPACE
STONEHOUSE DISTRICT JAMES CITY COUNTY VIRGINIA



No.	DATE	REVISION / COMMENT / NOTE	BY

City of Williamsburg & County of James City
Circuit Court: This PLAT was recorded on
11 November 2008
at 10:06 AM/PM: PB PG
DOCUMENT # 080024801
BETSY B. WOOLRIDGE, CLERK
Betsy B. Woolridge Clerk

Designed AES	Drawn MEG
Scale 1"=30'	Date 9/04/08
Project No. 9353-05	Drawing No. 2 OF 2

STATE OF VIRGINIA
CITY OF WILLIAMSBURG & COUNTY OF
JAMES CITY CIRCUIT COURT, THIS 23
DAY OF March 2009.

THE PLAT SHOWN HEREON WAS PRESENTED
AND ADMITTED TO THE RECORD AS THE
LAW DIRECTS. @ 10:06 AM/PM
DOCUMENT # 080024801
TESTE: *Betsy B. Woolridge*
BETSY B. WOOLRIDGE, CLERK