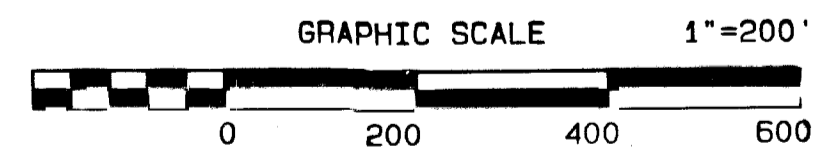
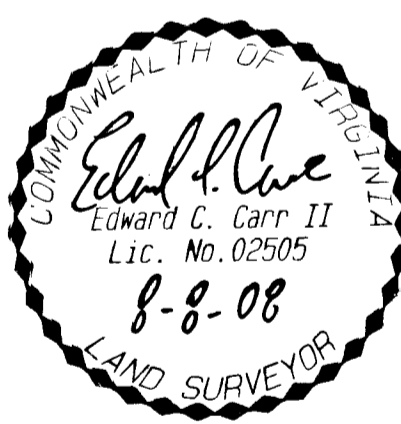
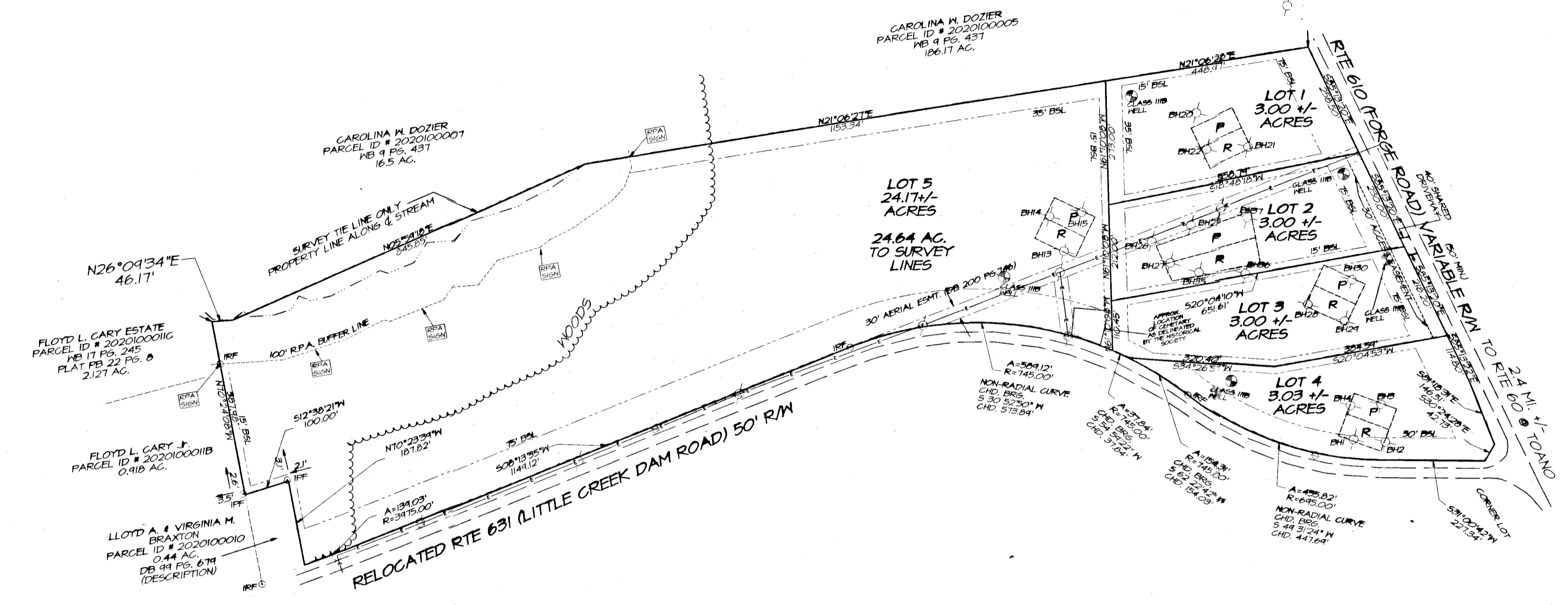
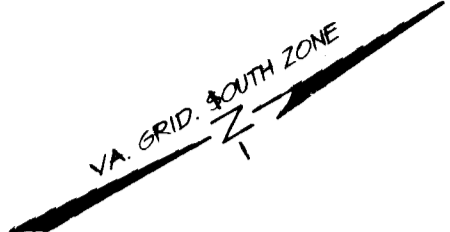
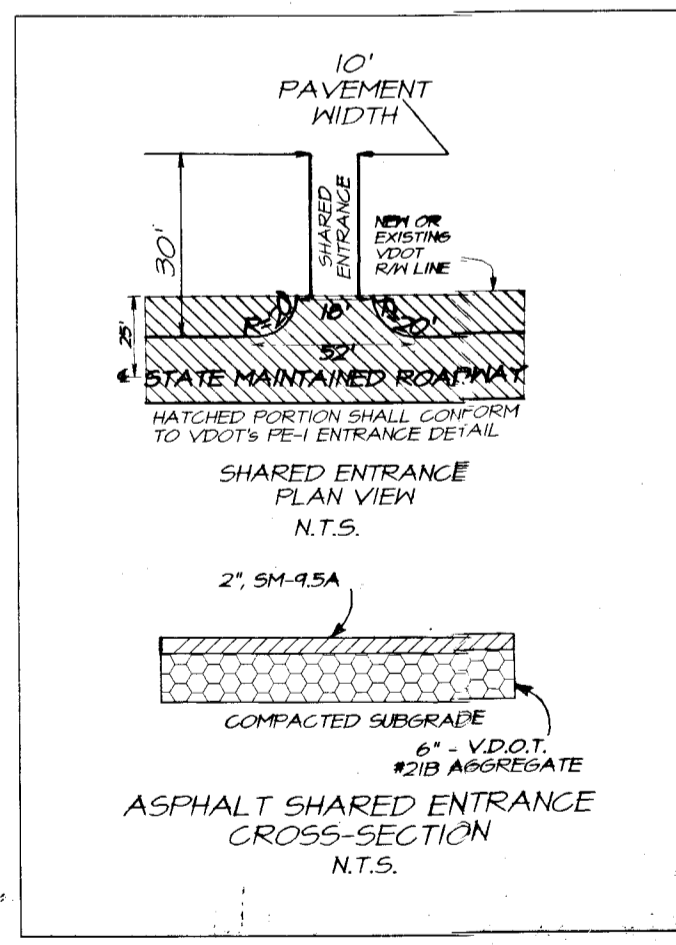


090006351

MINOR SUBDIVISION
(PHASE I)
OF THE PROPERTY OF
CHARLES W. DOZIER



SHARED ENTRANCE DETAIL



4 Large Plat(s) Recorded
herewith as # 090006351

City of Williamsburg & County of James City
Circuit Court: This PLAT was recorded on
at 1:47 PM, PB PG
DOCUMENT # 090006351
BETSY B. WOOLRIDGE, CLERK
Betsy B. Woolridge Clerk