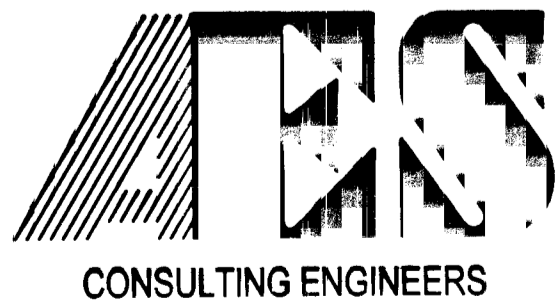
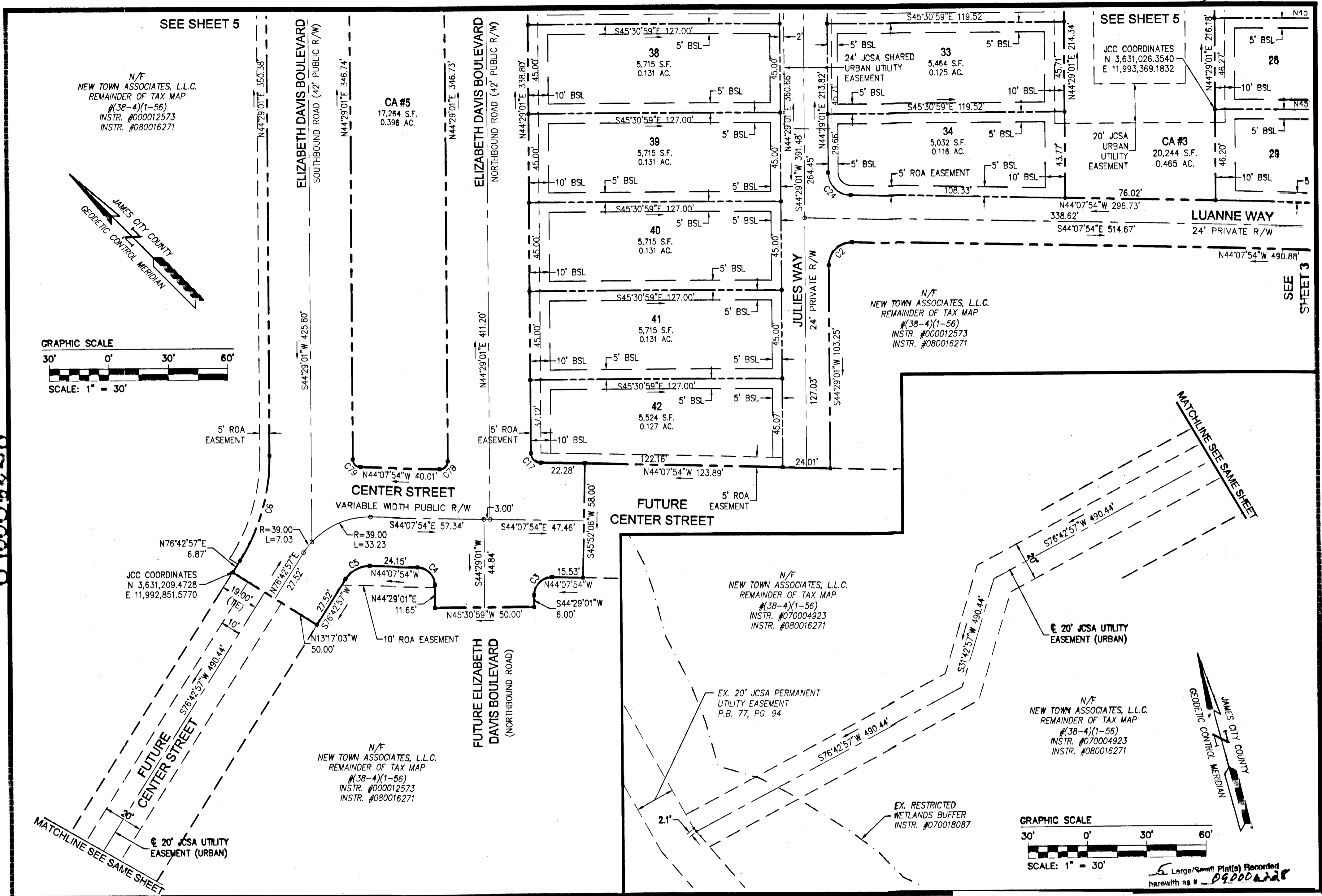


S:\Jobs\6632\S7\02-Phase9\dwg\SurfPlats\6632S7 PH IX SUBD SH 4.dwg, 1/17/2009 1:33:45 PM, stephen.cooke

090006228

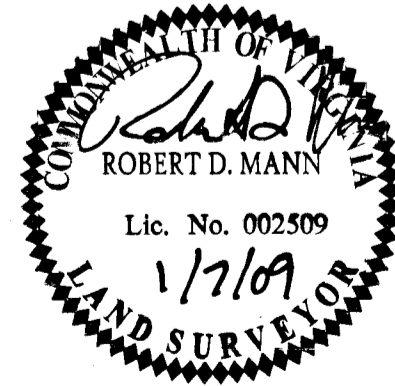


5248 Olde Towne Road, Suite 1
Williamsburg, Virginia 23188
(757) 253-0040
Fax (757) 220-8994

WILLIAMSBURG • RICHMOND • GLOUCESTER • FREDERICKSBURG

**PLAT OF SUBDIVISION
PHASE IX, SECTION 7
NEW TOWN
OWNED BY NEW TOWN ASSOCIATES, LLC.**

BERKELEY DISTRICT JAMES CITY COUNTY VIRGINIA



City of Williamsburg & County of James City Circuit Court: This PLAT was recorded on				
at 1:29 AM/PM, PG 3 March 2009				
DOCUMENT # 090006228				
BETSY B. WOOLRIDGE, CLERK				
Betsy B. Woolridge Clerk				
1	1/7/09	REVISED PER COUNTY COMMENTS	RDM	RDM
No.	DATE	REVISION / COMMENT / NOTE	REVISED BY	REVIEWED BY

Designed AES	Drawn AWT
Scale 1"=30'	Date 11/18/08
Project No. 6632-07-02	
Drawing No. 4 of 5	