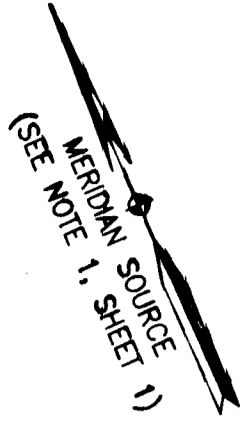


090004678

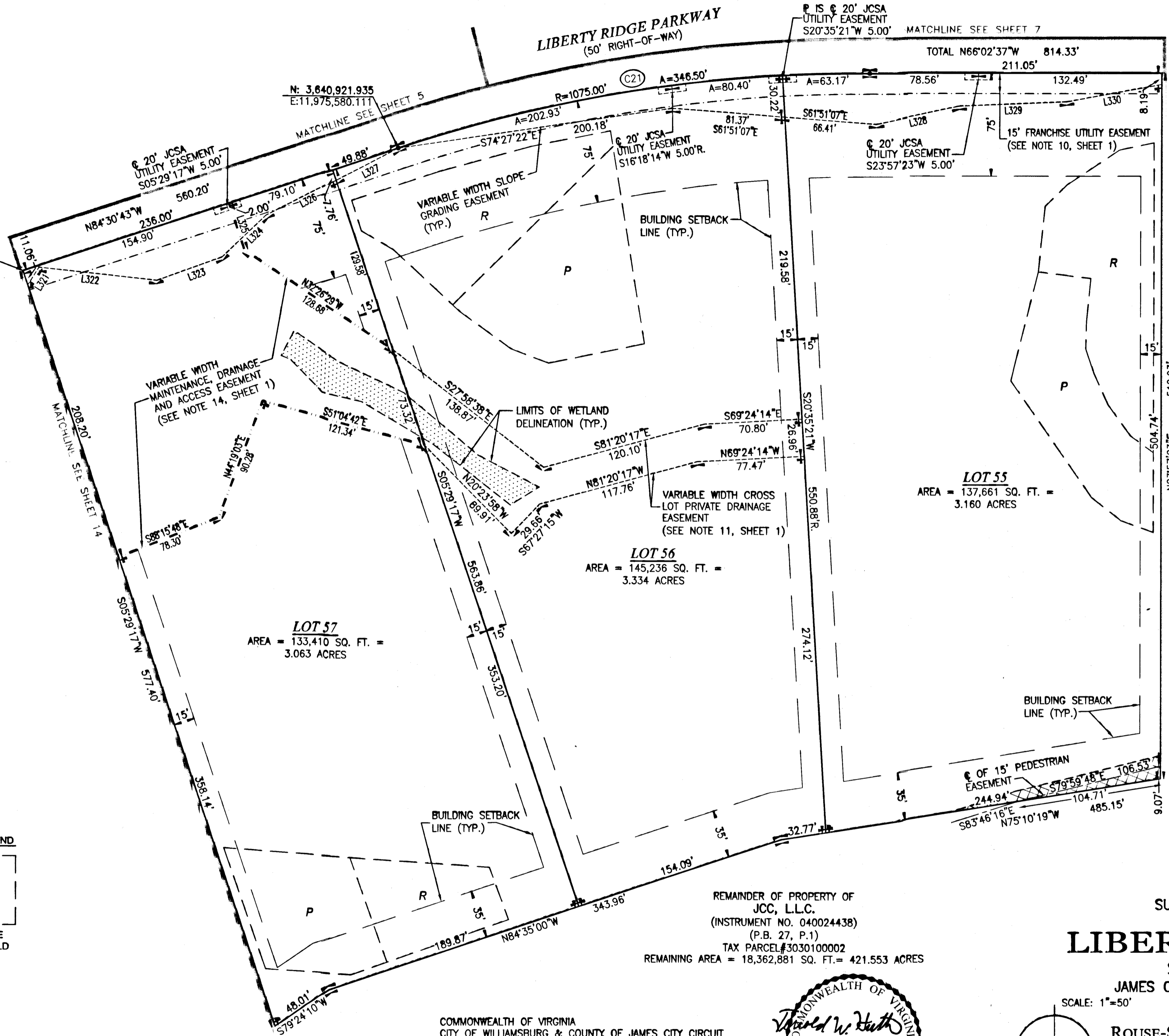


N: 3,640,949.277
E: 11,975,295.537

N: 3,640,921.935
E: 11,975,580.111

R IS 6' 20' JCSA
UTILITY EASEMENT
S20°35'21"W 5.00'

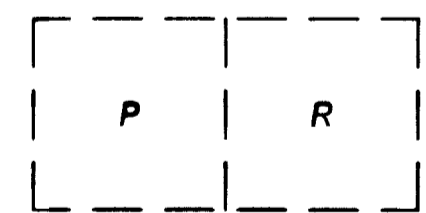
TOTAL N66°02'37"W 814.33'
211.05'



MATCHLINE SEE SHEET 12
512.93'
N23°57'23"E

- DELINEATED WETLANDS
- PEDESTRIAN EASEMENT

SEPTIC DRAINFIELD LEGEND



PRIMARY DRAINFIELD
RESERVE DRAINFIELD
(SEE NOTE 8, SHEET 1)

• - DENOTES IRON PIN TO BE SET

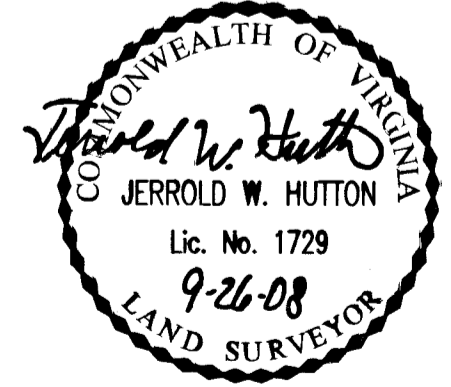
SEE SHEET 1 FOR NOTES AND CERTIFICATIONS
SEE SHEET 3 FOR LINE, CURVE AND AREA TABLES

16 Large/Small Plat(s) Recorded
Instrument # 090004678

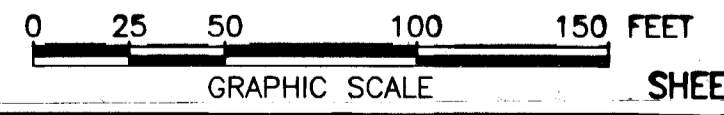
REMAINDER OF PROPERTY OF
JCC, L.L.C.
(INSTRUMENT NO. 040024438)
(P.B. 27, P.1)
TAX PARCEL #3030100002
REMAINING AREA = 18,362,881 SQ. FT. = 421.553 ACRES

**SUBDIVISION PLAT
OF
LIBERTY RIDGE
SECTION 1
JAMES CITY COUNTY, VIRGINIA**

SCALE: 1"=50'
JANUARY 28, 2008
REVISED: SEPTEMBER 26, 2008



ROUSE-SIRINE ASSOCIATES, LTD.
LAND SURVEYORS & MAPPING CONSULTANTS
333 OFFICE SQUARE LANE
VIRGINIA BEACH, VIRGINIA 23462
TEL: (757)490-2308; FAX: (757)499-9138
www.rouse-sirine.com



SHEET 13 OF 16