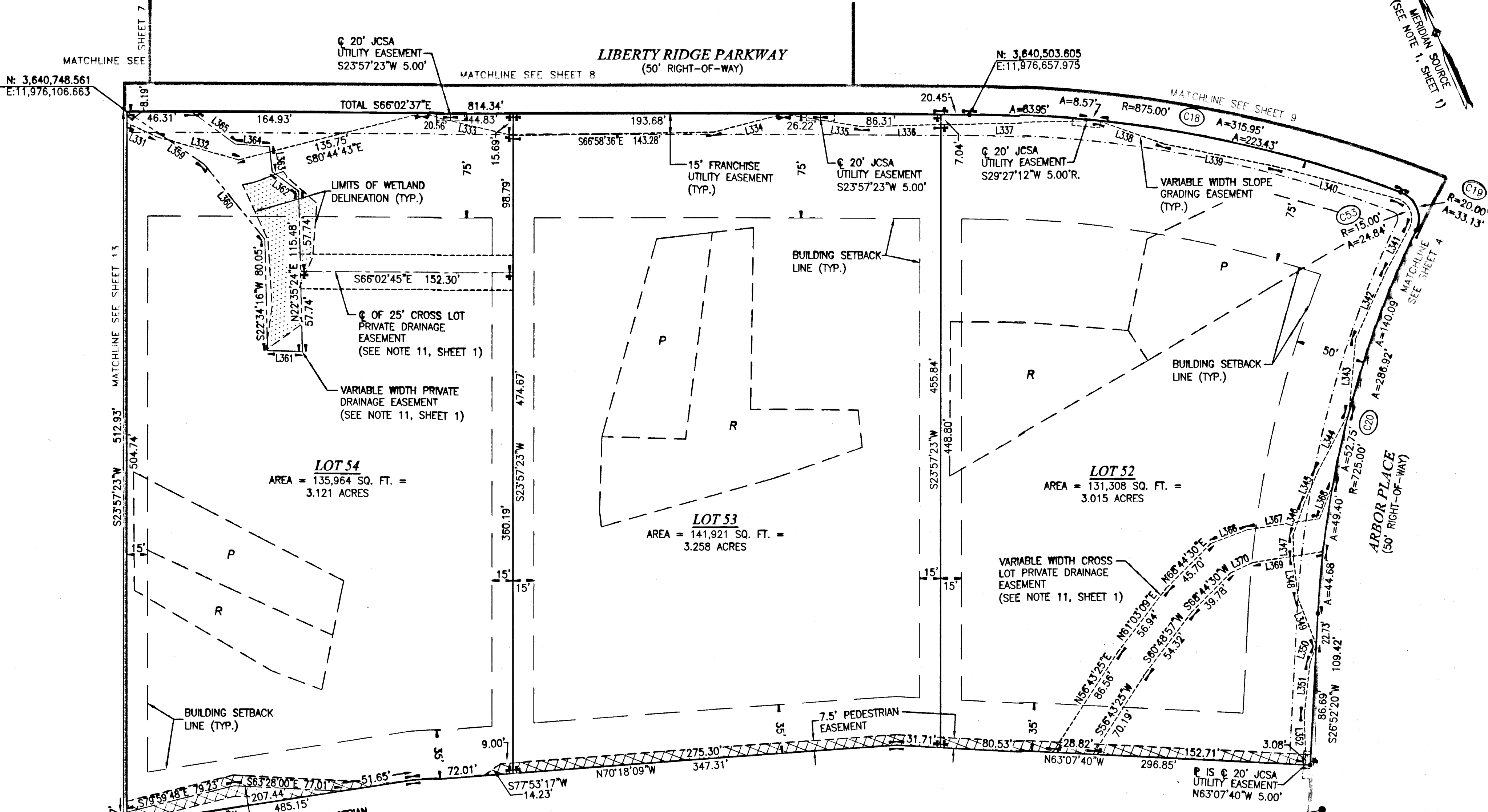
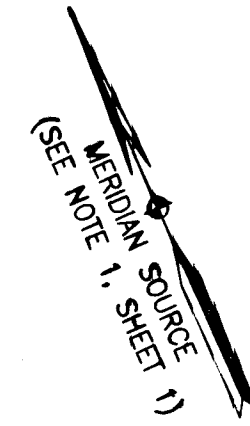


090004678

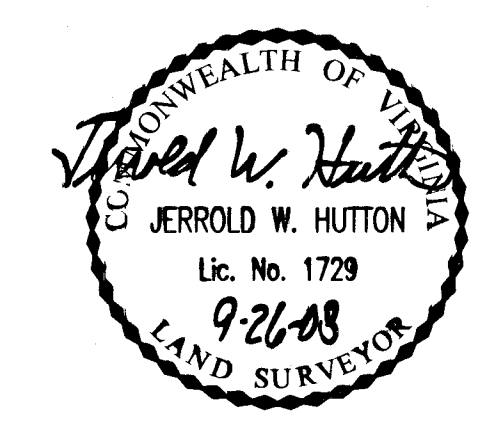


LOT 54
AREA = 135,964 SQ. FT. =
3.121 ACRES

LOT 53
AREA = 141,921 SQ. FT. =
3.258 ACRES

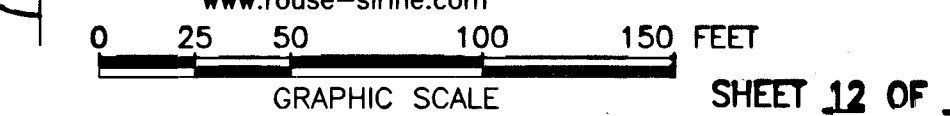
LOT 52
AREA = 131,308 SQ. FT. =
3.015 ACRES

REMAINDER OF PROPERTY OF
JCC, L.L.C.
(INSTRUMENT NO. 040024438)
(P.B. 27, P.1)
TAX PARCEL #3030100002
REMAINING AREA = 18,362,881 SQ. FT. = 421.553 ACRES

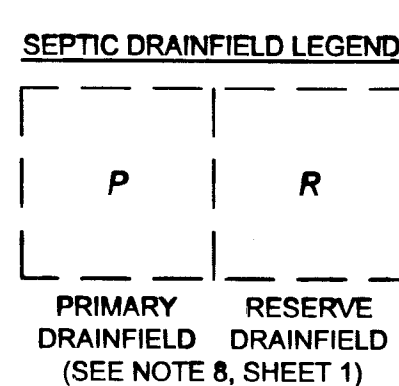


SUBMISSION PLAT
OF
LIBERTY RIDGE
SECTION 1
JAMES CITY COUNTY, VIRGINIA
SCALE: 1"=50'
JANUARY 28, 2008
REVISED: SEPTEMBER 26, 2008

ROUSE-SIRINE ASSOCIATES, LTD.
LAND SURVEYORS & MAPPING CONSULTANTS
333 OFFICE SQUARE LANE
VIRGINIA BEACH, VIRGINIA 23462
TEL. (757)490-2308; FAX: (757)499-9136
www.rouse-sirine.com



- DELINEATED WETLANDS
- PEDESTRIAN EASMENT
- - DENOTES IRON PIN TO BE SET



COMMONWEALTH OF VIRGINIA
CITY OF WILLIAMSBURG & COUNTY OF JAMES CITY CIRCUIT
COURT. THIS 12 DAY OF February, 2008
THE PLAT SHOWN HEREON WAS PRESENTED AND ADMITTED
TO THE RECORD AS THE LAW DIRECTS. AT 10:41 AM/PM
INSTRUMENT # 090004678

TESTE: Betsy B. Woolridge
BETSY B. WOOLRIDGE, CLERK
By Christina H. ...

1 Large/Small Plat(s) Recorded
herewith as # 090004678

SEE SHEET 1 FOR NOTES AND CERTIFICATIONS
SEE SHEET 3 FOR LINE, CURVE AND AREA TABLES