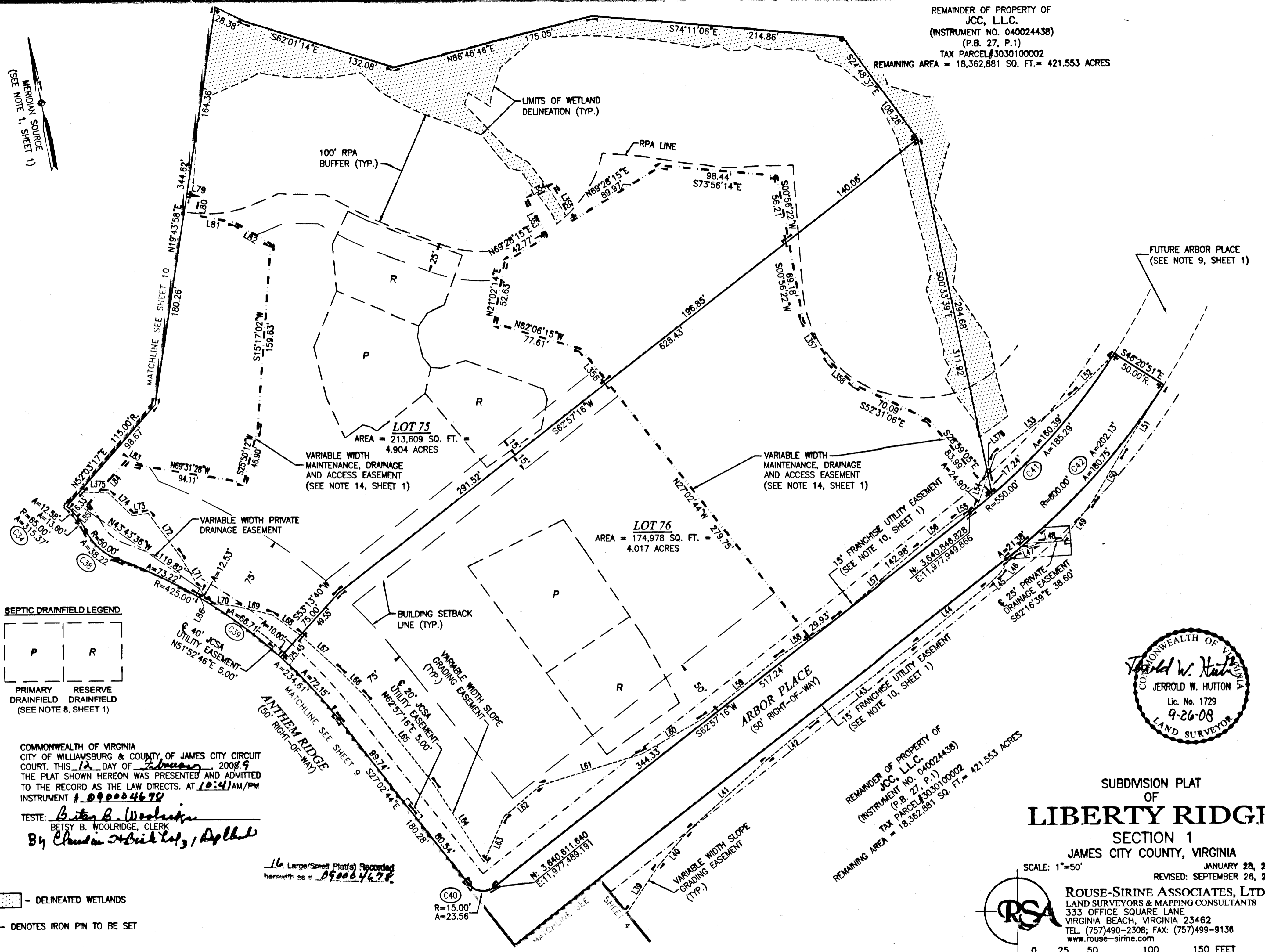
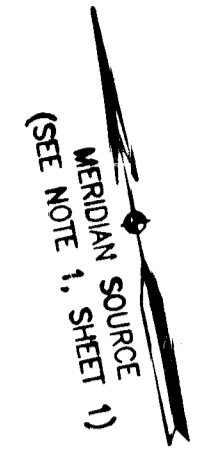


090004678

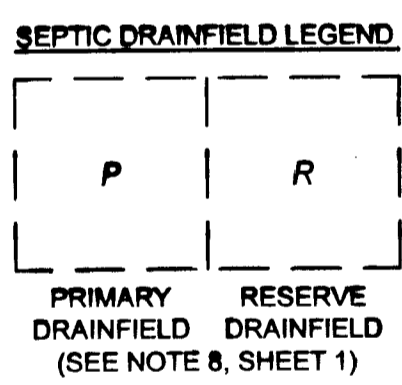
REMAINDER OF PROPERTY OF
JCC, L.L.C.
(INSTRUMENT NO. 040024438)
(P.B. 27, P.1)
TAX PARCEL #3030100002
REMAINING AREA = 18,362,881 SQ. FT. = 421.553 ACRES



FUTURE ARBOR PLACE
(SEE NOTE 9, SHEET 1)

LOT 75
AREA = 213,609 SQ. FT. = 4.904 ACRES
VARIABLE WIDTH MAINTENANCE, DRAINAGE AND ACCESS EASEMENT (SEE NOTE 14, SHEET 1)

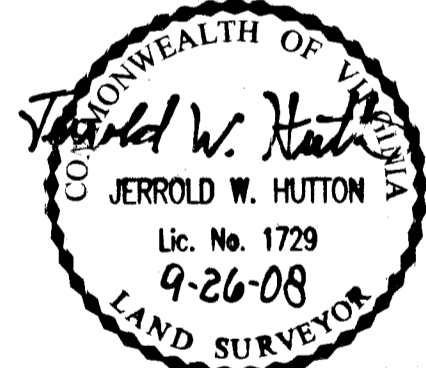
LOT 76
AREA = 174,978 SQ. FT. = 4.017 ACRES



COMMONWEALTH OF VIRGINIA
CITY OF WILLIAMSBURG & COUNTY OF JAMES CITY CIRCUIT COURT, THIS 12 DAY OF February, 2008
THE PLAT SHOWN HEREON WAS PRESENTED AND ADMITTED TO THE RECORD AS THE LAW DIRECTS. AT 10:41 AM/PM
INSTRUMENT # 090004678

TESTE: *Betsy B. Woolridge*
BETSY B. WOOLRIDGE, CLERK
By *Charles H. Hinkley, III*, Depled

16 Large/Small Plats Recorded
herewith as # 090004678

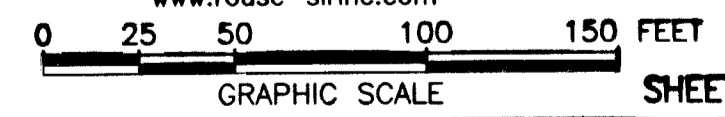


SUBDIVISION PLAT
OF
LIBERTY RIDGE
SECTION 1

JAMES CITY COUNTY, VIRGINIA
SCALE: 1"=50'
JANUARY 28, 2008
REVISED: SEPTEMBER 26, 2008



ROUSE-SIRINE ASSOCIATES, LTD.
LAND SURVEYORS & MAPPING CONSULTANTS
333 OFFICE SQUARE LANE
VIRGINIA BEACH, VIRGINIA 23462
TEL (757)490-2308; FAX: (757)499-9138
www.rouse-sirine.com



SEE SHEET 1 FOR NOTES AND CERTIFICATIONS
SEE SHEET 3 FOR LINE, CURVE AND AREA TABLES