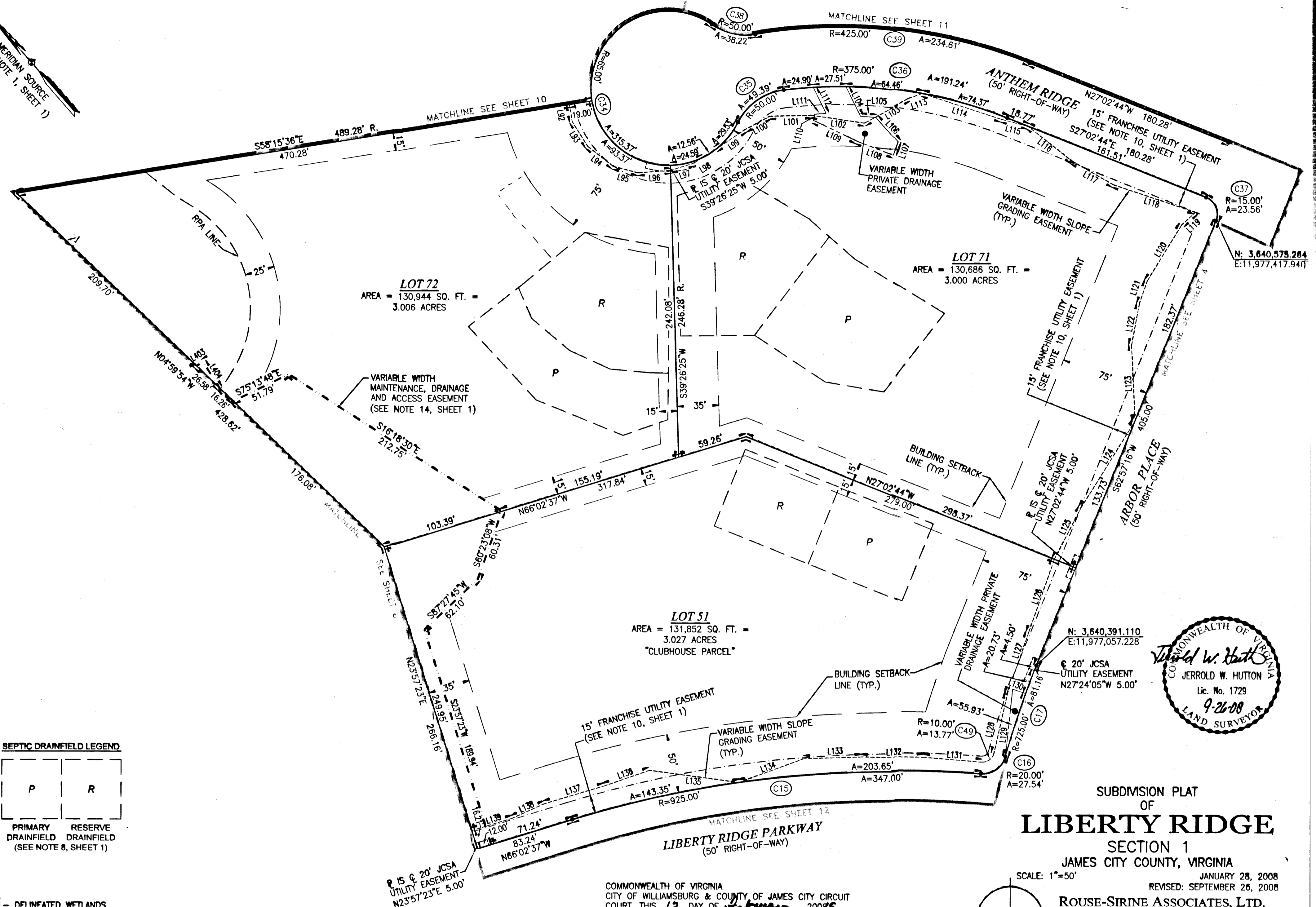


090004678



SEPTIC DRAINFIELD LEGEND

P	R
PRIMARY DRAINFIELD (SEE NOTE 8, SHEET 1)	RESERVE DRAINFIELD

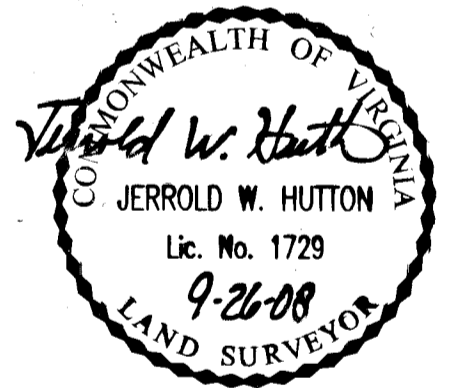
- DELINEATED WETLANDS
- - DENOTES IRON PIN TO BE SET

SEE SHEET 1 FOR NOTES AND CERTIFICATIONS
SEE SHEET 3 FOR LINE, CURVE AND AREA TABLES

16 Large/Small Plats Recorded
herewith as # 090004678

COMMONWEALTH OF VIRGINIA
CITY OF WILLIAMSBURG & COUNTY OF JAMES CITY CIRCUIT COURT, THIS 12 DAY OF February, 2008
THE PLAT SHOWN HEREON WAS PRESENTED AND ADMITTED TO THE RECORD AS THE LAW DIRECTS, AT 10:41 AM/PM
INSTRUMENT # 090004678

TESTE: Betsy B. Woolridge
BETSY B. WOOLRIDGE, CLERK
By: Claudia H. Binkley, Esq.



SUBMISSION PLAT
OF
LIBERTY RIDGE
SECTION 1
JAMES CITY COUNTY, VIRGINIA

SCALE: 1"=50'
JANUARY 28, 2008
REVISED: SEPTEMBER 26, 2008

ROUSE-SIRINE ASSOCIATES, LTD.
LAND SURVEYORS & MAPPING CONSULTANTS
333 OFFICE SQUARE LANE
VIRGINIA BEACH, VIRGINIA 23462
TEL: (757)490-2308; FAX: (757)499-9138
www.rouse-sirine.com

