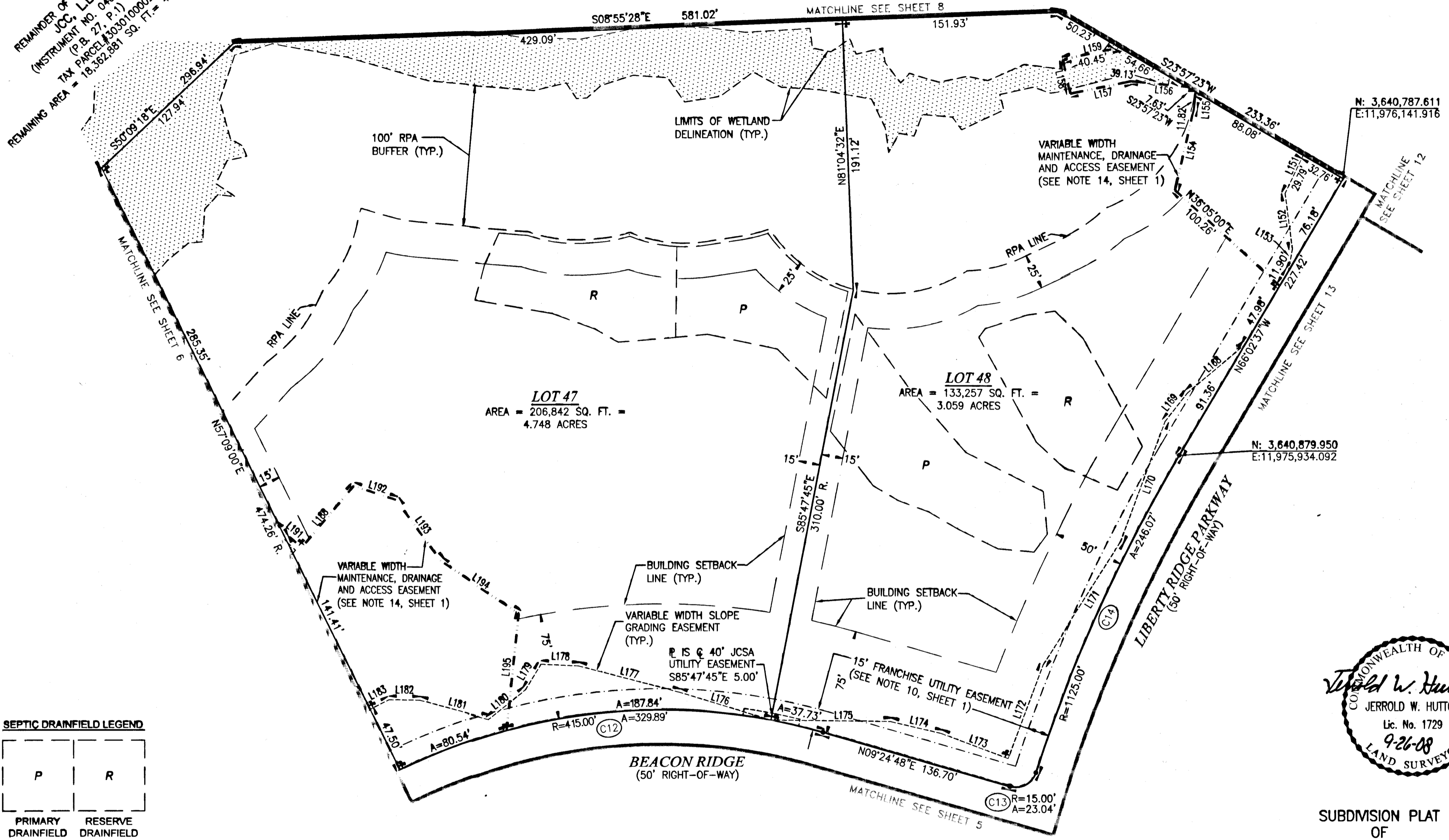


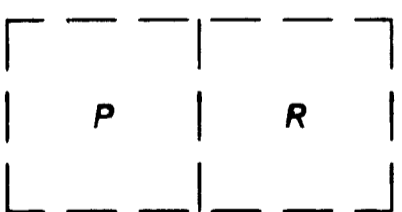
090004678

MERIDIAN SOURCE
(SEE NOTE 1, SHEET 1)

REMAINDER OF PROPERTY OF
JCC, L.L.C.
(INSTRUMENT NO. 040024438)
(P.B. 27, P.1)
TAX PARCEL # 030100002
REMAINING AREA = 18,362,881 SQ. FT. = 421,353 ACRES



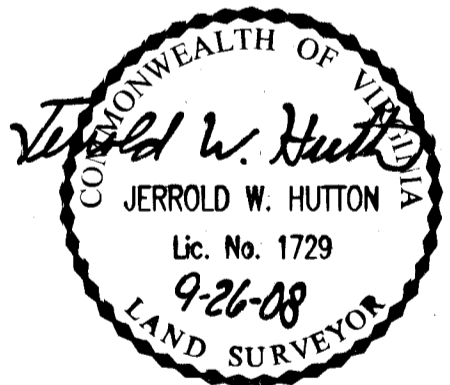
SEPTIC DRAINFIELD LEGEND



PRIMARY DRAINFIELD
RESERVE DRAINFIELD
(SEE NOTE 8, SHEET 1)

DELINEATED WETLANDS
DENOTES IRON PIN TO BE SET

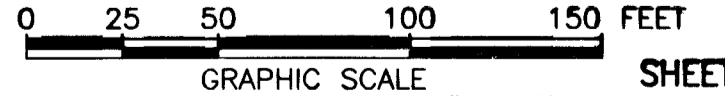
SEE SHEET 1 FOR NOTES AND CERTIFICATIONS
SEE SHEET 3 FOR LINE, CURVE AND AREA TABLES



SUBMISSION PLAT
OF
LIBERTY RIDGE
SECTION 1
JAMES CITY COUNTY, VIRGINIA

SCALE: 1"=50' JANUARY 28, 2008
REVISED: SEPTEMBER 26, 2008

ROUSE-SIRINE ASSOCIATES, LTD.
LAND SURVEYORS & MAPPING CONSULTANTS
333 OFFICE SQUARE LANE
VIRGINIA BEACH, VIRGINIA 23462
TEL. (757)490-2308; FAX: (757)499-9136
www.rouse-sirine.com



SHEET 7 OF 16

COMMONWEALTH OF VIRGINIA
CITY OF WILLIAMSBURG & COUNTY OF JAMES CITY CIRCUIT
COURT. THIS 12 DAY OF February, 2008
THE PLAT SHOWN HEREON WAS PRESENTED AND ADMITTED
TO THE RECORD AS THE LAW DIRECTS. AT 10:41 AM/PM
INSTRUMENT # 090004678

TESTE: *Betsy B. Woolridge*
BETSY B. WOOLRIDGE, CLERK
By Claudia H. ...

16 Large/Small Plat(s) Recorded
herewith as # 090004678