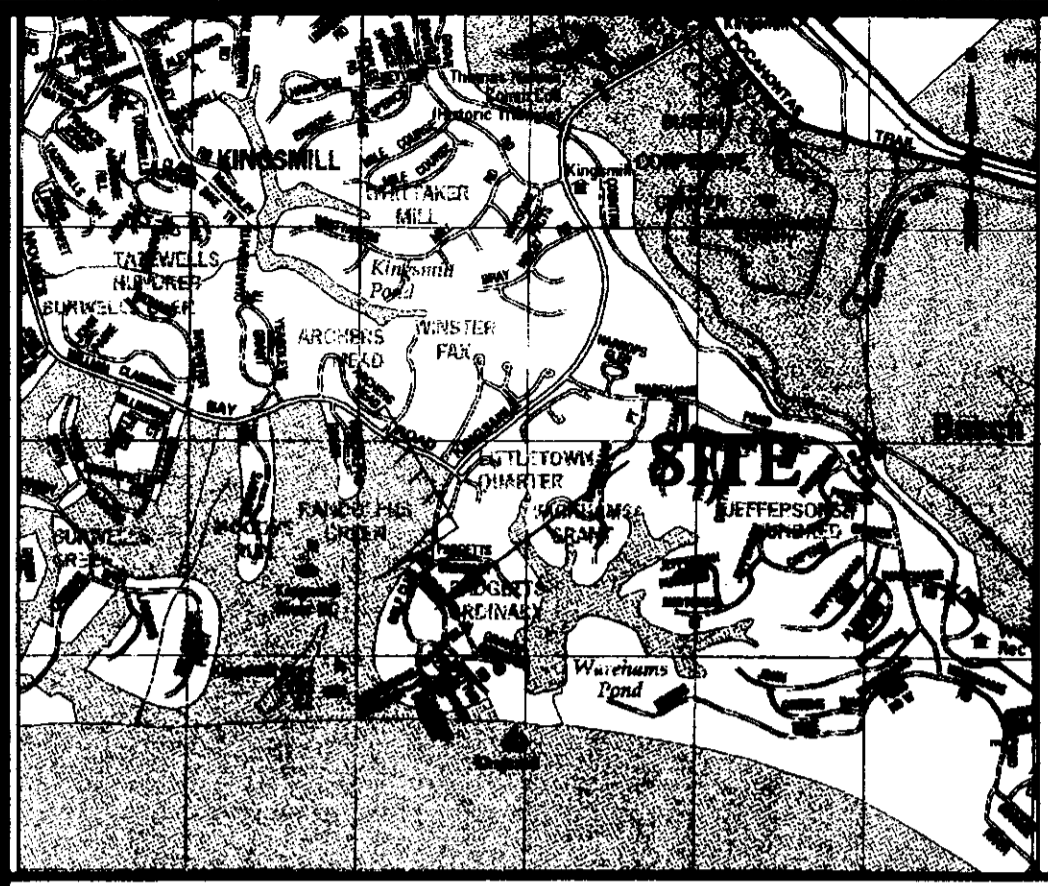


090003200



CURVE TABLE						
CURVE	LENGTH	RADIUS	DELTA	TANGENT	BEARING	CHORD
C1	355.07	575.00	35°22'51"	183.40	N32°51'27"W	349.46
C2	253.50	575.00	25°15'36"	128.84	N02°32'13"W	251.45
C3	36.68	30.00	70°03'13"	21.03	N24°56'02"W	34.44
C4	129.40	430.00	17°14'31"	65.19	N51°20'23"W	128.91

20' JCSA UTILITY EASEMENT = 6,608 SF / 0.1517 ACRES

Legend

- ⊙ SANITARY MANHOLE
- P.B. PLAT BOOK
- PG. PAGE

PLAT SHOWING JCSA UTILITY EASEMENTS
ON THE PROPERTY STANDING
IN THE NAME OF
BUSCH PROPERTIES, INC.
PLAT BOOK 48, PAGE 17
ROBERTS DISTRICT
JAMES CITY COUNTY, VIRGINIA

DATE: 12/29/08 SHEET 1 OF 1 SCALE: 1"=60'
PROJECT NO: 31039.08 DRAWN BY: MAG

VHB Vanasse Hangen Brustlin, Inc.
Transportation Land Development Environmental Services
351 McLaws Circle, Suite 3
Williamsburg, Virginia 23185-6316
(757) 220 0500 FAX (757) 220 8544

COPYRIGHT ADC THE MAP PEOPLE PERMITTED USE NUMBER 20409135
VICINITY MAP: 1" = 2000'

EXISTING KINGSMILL
TENNIS CENTER

BUSCH PROPERTIES,
INC.
KINGSMILL TENNIS
CENTER
(P.B. 48, PG. 17)

General Notes

1. THE PROPERTY LINES SHOWN ON THIS PLAN ARE BASED UPON AN ACTUAL FIELD SURVEY PERFORMED BY VANASSE HANGEN BRUSTLIN, INC. IN JULY 2008, DECEMBER 2008, AND FROM DEEDS AND PLANS OF RECORD.
2. NO TITLE REPORT WAS FURNISHED, THEREFORE ALL ENCUMBRANCES ON THE PROPERTIES MAY NOT BE SHOWN.
3. THIS IS NOT A BOUNDARY SURVEY. THE PURPOSE OF THIS PLAT IS TO SHOW THE CREATION OF SANITARY SEWER EASEMENT UPON BUSCH PROPERTIES, INC.
4. EASEMENT DENOTED AS "JCSA UTILITY EASEMENTS" ARE FOR THE EXCLUSIVE USE OF THE JAMES CITY SERVICE AUTHORITY AND THE PROPERTY OWNER. OTHER UTILITY SERVICE PROVIDERS DESIRING TO USE THESE EASEMENT WITH THE EXCEPTION OF THE PERPENDICULAR UTILITY CROSSINGS MUST OBTAIN AUTHORIZATION FOR ACCESS AND USE FROM JCSA AND THE PROPERTY OWNER. ADDITIONALLY, JCSA SHALL NOT BE HELD RESPONSIBLE FOR ANY DAMAGE TO IMPROVEMENTS WITHIN THIS EASEMENT, FROM ANY CAUSE.
5. ALL PARCELS SHOWN ARE SERVED BY PUBLIC WATER AND PUBLIC SEWER SYSTEMS.

Certificate Of Notarization

STATE OF VA
COUNTY/CITY OF James City, TO WIT:

I, Allison M. Hayes A NOTARY PUBLIC, IN AND FOR THE JURISDICTION AFORESAID, DO HEREBY CERTIFY THE Managing Director WHOSE NAME(S) ARE SIGNED TO THE FOREGOING WRITING HAVE ACKNOWLEDGED THE SAME BEFORE ME IN MY JURISDICTION AFORESAID, HE/SHE/THEY IS/ARE PERSONALLY KNOWN TO ME OR HAS/HAVE PRODUCED VADL AS IDENTIFICATION.

GIVEN UNDER MY HAND THIS 7 DAY OF January, 2009.

Allison M. Hayes 4/30/2010
NOTARY PUBLIC #150666 MY COMMISSION EXPIRES

**State Of Virginia
James City County**

IN THE CLERK'S OFFICE OF THE CIRCUIT COURT FOR JAMES CITY COUNTY, THE 29 DAY OF January, 2009. THIS MAP WAS PRESENTED AND ADMITTED TO RECORD AS THE LAW DIRECTS AS INSTRUMENT NUMBER 090003200 at 9:00 a.m.

NETSY B. WOOLIDGE, CLERK OF CIRCUIT COURT

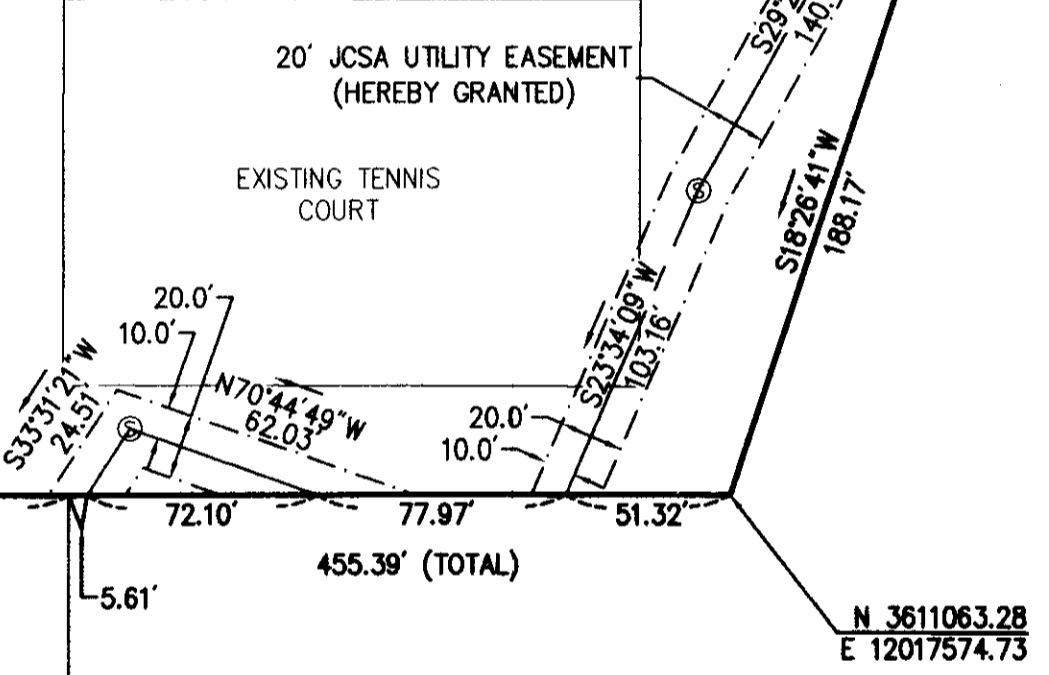
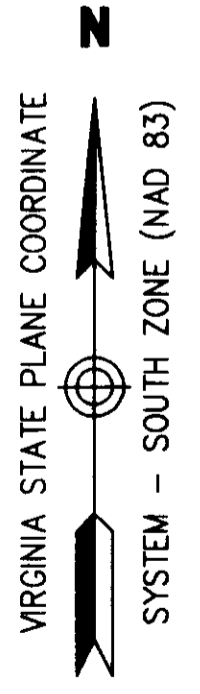
TESTE: _____ CLERK

BY: Dee Ann Hallman D.C. 3 Charge/Sheet Plat(s) Recorded
herein, as # 090003200

Owner's Consent
THE GRANTING OF VARIOUS EASEMENTS SHOWN HEREON IS WITH THE FREE CONSENT AND IN ACCORDANCE WITH THE DESIRES OF THE UNDERSIGNED OWNERS AND PROPRIETORS.

BUSCH PROPERTIES, INC.
KINGSMILL RESORT

Robinson 1/9/09
ROBIN CARSON, MANAGING DIRECTOR - KINGSMILL RESORT & SPA DATE
P:\31039.04\CAD\SR\PLANSET\3103904-SV.DWG



BUSCH PROPERTIES, INC.
CONFERENCE CENTER
CONDOMINIUM
PHASE 2A
(P.B. 52, PG. 60)
(P.B. 48, PG. 17)

BUSCH PROPERTIES, INC.
CONFERENCE CENTER
CONDOMINIUM
PHASE 2B
(P.B. 52, PG. 60)
(P.B. 48, PG. 17)

PADGETS ORDINARY
CONDOMINIUMS UNOWNER'S
ASSOCIATION
(D.B. 249, PG. 809)

090003200

PLAT SHOWING JCSA UTILITY EASEMENTS
ON THE PROPERTY STANDING
IN THE NAME OF
BUSCH PROPERTIES, INC.
PLAT BOOK 48, PAGE 17
ROBERTS DISTRICT
JAMES CITY COUNTY, VIRGINIA

DATE: 12/29/08 SHEET 2 OF 2 SCALE: 1"=60'
PROJECT NO: 31039.08 DRAWN BY: MAG

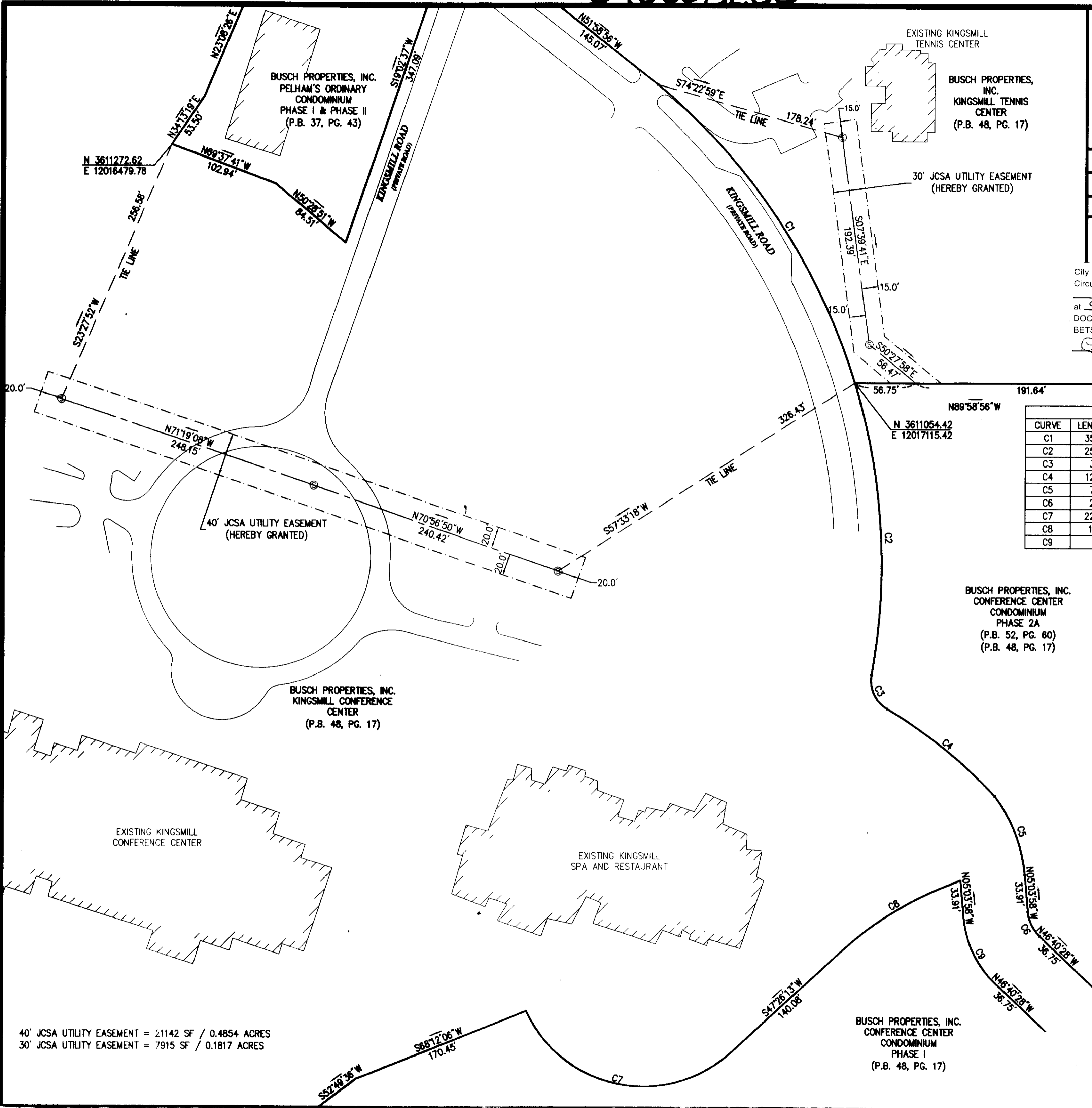
VHB Vanasse Hangen Brustlin, Inc.
Transportation Land Development Environmental Services
351 McLaws Circle, Suite 3
Williamsburg, Virginia 23185-6316
(757) 220 0500 FAX (757) 220 8544

City of Williamsburg & County of James City
Circuit Court: This PLAT was recorded on
at 9:00 AM/PM on 1-28-2009 PG. 1
DOCUMENT # 090003200
BETSY B. WOOLRIDGE, CLERK
Betsy Woolridge Clerk

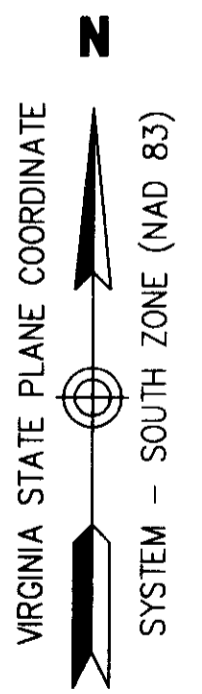
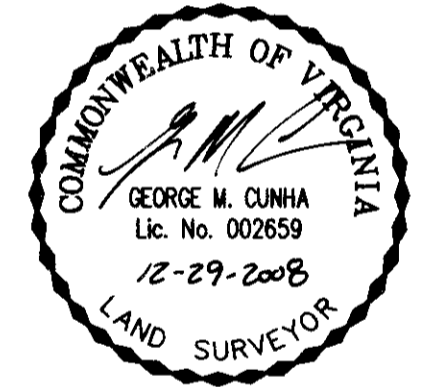
Legend
 Ⓢ SANITARY MANHOLE
 P.B. PLAT BOOK
 PG. PAGE

3 Large/Small Plats(s) Recorded
herewith as # 090003200

CURVE	LENGTH	RADIUS	DELTA	TANGENT	BEARING	CHORD
C1	355.07	575.00	35°22'51"	183.40	N32°51'27"W	349.46
C2	253.50	575.00	25°15'36"	128.84	N02°32'13"W	251.45
C3	36.68	30.00	70°03'13"	21.03	N24°56'02"W	34.44
C4	129.40	430.00	17°14'31"	65.19	N51°20'23"W	128.91
C5	79.00	140.30	32°15'43"	40.58	N21°11'50"W	77.96
C6	25.74	35.45	41°36'07"	13.47	N25°52'24"W	25.18
C7	226.08	120.00	107°56'36"	164.99	S78°35'29"E	194.09
C8	129.11	311.00	23°47'10"	65.50	N59°19'48"E	128.18
C9	69.31	95.45	41°36'22"	36.26	S25°52'17"E	67.80



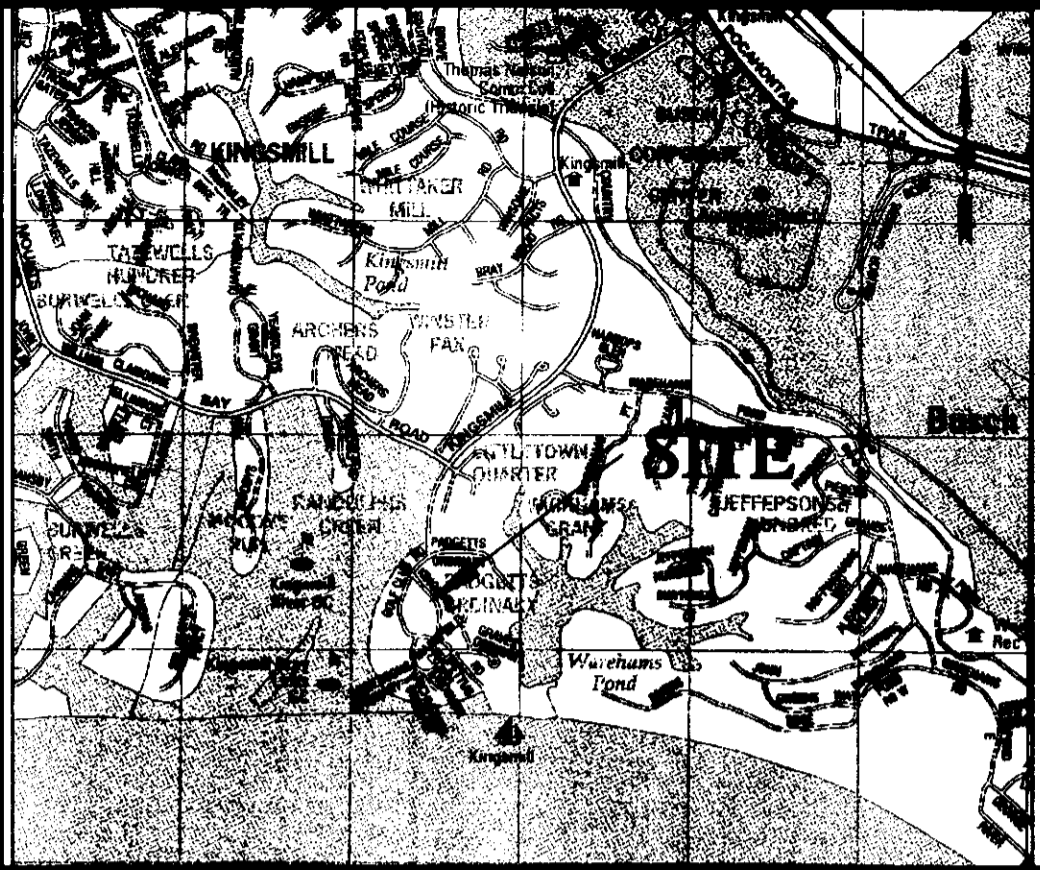
BUSCH PROPERTIES, INC.
CONFERENCE CENTER
CONDOMINIUM
PHASE 2A
(P.B. 52, PG. 60)
(P.B. 48, PG. 17)



40' JCSA UTILITY EASEMENT = 21142 SF / 0.4854 ACRES
30' JCSA UTILITY EASEMENT = 7915 SF / 0.1817 ACRES

BUSCH PROPERTIES, INC.
CONFERENCE CENTER
CONDOMINIUM
PHASE 1
(P.B. 48, PG. 17)

090003200



COPYRIGHT ADC THE MAP PEOPLE PERMITTED USE NUMBER 20409135
VICINITY MAP: 1" = 2000'

PLAT SHOWING JCSA UTILITY EASEMENTS
ON THE PROPERTY STANDING
IN THE NAME OF
BUSCH PROPERTIES, INC.
PLAT BOOK 48, PAGE 17
ROBERTS DISTRICT
JAMES CITY COUNTY, VIRGINIA

DATE: 12/29/08 SHEET 1 OF 2 SCALE: 1"=60'
PROJECT NO: 31039.08 DRAWN BY: MAG

VHB *Vanasse Hangen Brustlin, Inc.*
Transportation Land Development Environmental Services
351 McLaws Circle, Suite 3
Williamsburg, Virginia 23185-6316
(757) 220 0500 FAX (757) 220 8544

Certificate of Notarization

STATE OF VA
COUNTY/CITY OF James City, TO WIT:

I, Allison M. Hayes A NOTARY PUBLIC, IN AND FOR THE
JURISDICTION AFORESAID, DO HEREBY CERTIFY THE Managing Director
WHOSE NAME(S) ARE SIGNED TO THE FOREGOING WRITING HAVE ACKNOWLEDGED
THE SAME BEFORE ME IN MY JURISDICTION AFORESAID. HE/SHE/THEY IS/ARE
PERSONALLY KNOWN TO ME OR HAS/HAVE PRODUCED VA DL
AS IDENTIFICATION.

GIVEN UNDER MY HAND THIS 7 DAY OF January, 2009.

Allison M. Hayes
NOTARY PUBLIC #150666

4/30/2010
MY COMMISSION EXPIRES

**State Of Virginia
James City County**

IN THE CLERK'S OFFICE OF THE CIRCUIT COURT FOR JAMES CITY COUNTY,
THE DAY OF , 2009. THIS MAP WAS PRESENTED AND ADMITTED
TO RECORD AS THE LAW DIRECTS AS INSTRUMENT NUMBER .

TESTE: _____
CLERK

BY: _____

Owner's Consent

THE GRANTING OF VARIOUS EASEMENTS SHOWN HEREON IS WITH THE FREE
CONSENT AND IN ACCORDANCE WITH THE DESIRES OF THE UNDERSIGNED OWNERS
AND PROPRIETORS.

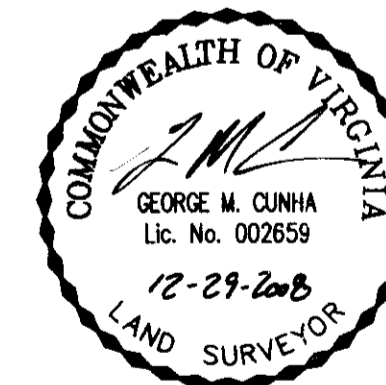
BUSCH PROPERTIES, INC.
KINGSMILL RESORT

Robin Carson
ROBIN CARSON, MANAGING DIRECTOR - KINGSMILL RESORT & SPA

1/2/09
DATE

General Notes

1. THE PROPERTY LINES SHOWN ON THIS PLAN ARE BASED UPON AN ACTUAL FIELD SURVEY PERFORMED BY VANASSE HANGEN BRUSTLIN, INC. IN JULY 2008, DECEMBER 2008, AND FROM DEEDS AND PLANS OF RECORD.
2. NO TITLE REPORT WAS FURNISHED, THEREFORE ALL ENCUMBRANCES ON THE PROPERTIES MAY NOT BE SHOWN.
3. THIS IS NOT A BOUNDARY SURVEY. THE PURPOSE OF THIS PLAT IS TO SHOW THE CREATION OF SANITARY SEWER EASEMENTS UPON BUSCH PROPERTIES, INC.
4. EASEMENTS DENOTED AS "JCSA UTILITY EASEMENTS" ARE FOR THE EXCLUSIVE USE OF THE JAMES CITY SERVICE AUTHORITY AND THE PROPERTY OWNER. OTHER UTILITY SERVICE PROVIDERS DESIRING TO USE THESE EASEMENTS WITH THE EXCEPTION OF THE PERPENDICULAR UTILITY CROSSINGS MUST OBTAIN AUTHORIZATION FOR ACCESS AND USE FROM JCSA AND THE PROPERTY OWNER. ADDITIONALLY, JCSA SHALL NOT BE HELD RESPONSIBLE FOR ANY DAMAGE TO IMPROVEMENTS WITHIN THIS EASEMENT, FROM ANY CAUSE.
5. ALL PARCELS SHOWN ARE SERVED BY PUBLIC WATER AND PUBLIC SEWER SYSTEMS.



3 Large/Small Plat(s) Recorded
herewith as # 090003200

City of Williamsburg & County of James City
Circuit Court: This PLAT was recorded on
1-28-2009
at 9:00 AM, PB , PG
DOCUMENT # 090003200
BETSY B. WOOLRIDGE, CLERK
Betsy B. Woolridge Clerk