

090003200

PLAT SHOWING JCSA UTILITY EASEMENTS
ON THE PROPERTY STANDING
IN THE NAME OF
BUSCH PROPERTIES, INC.
PLAT BOOK 48, PAGE 17
ROBERTS DISTRICT
JAMES CITY COUNTY, VIRGINIA

DATE: 12/29/08 SHEET 2 OF 2 SCALE: 1"=60'
PROJECT NO: 31039.08 DRAWN BY: MAG

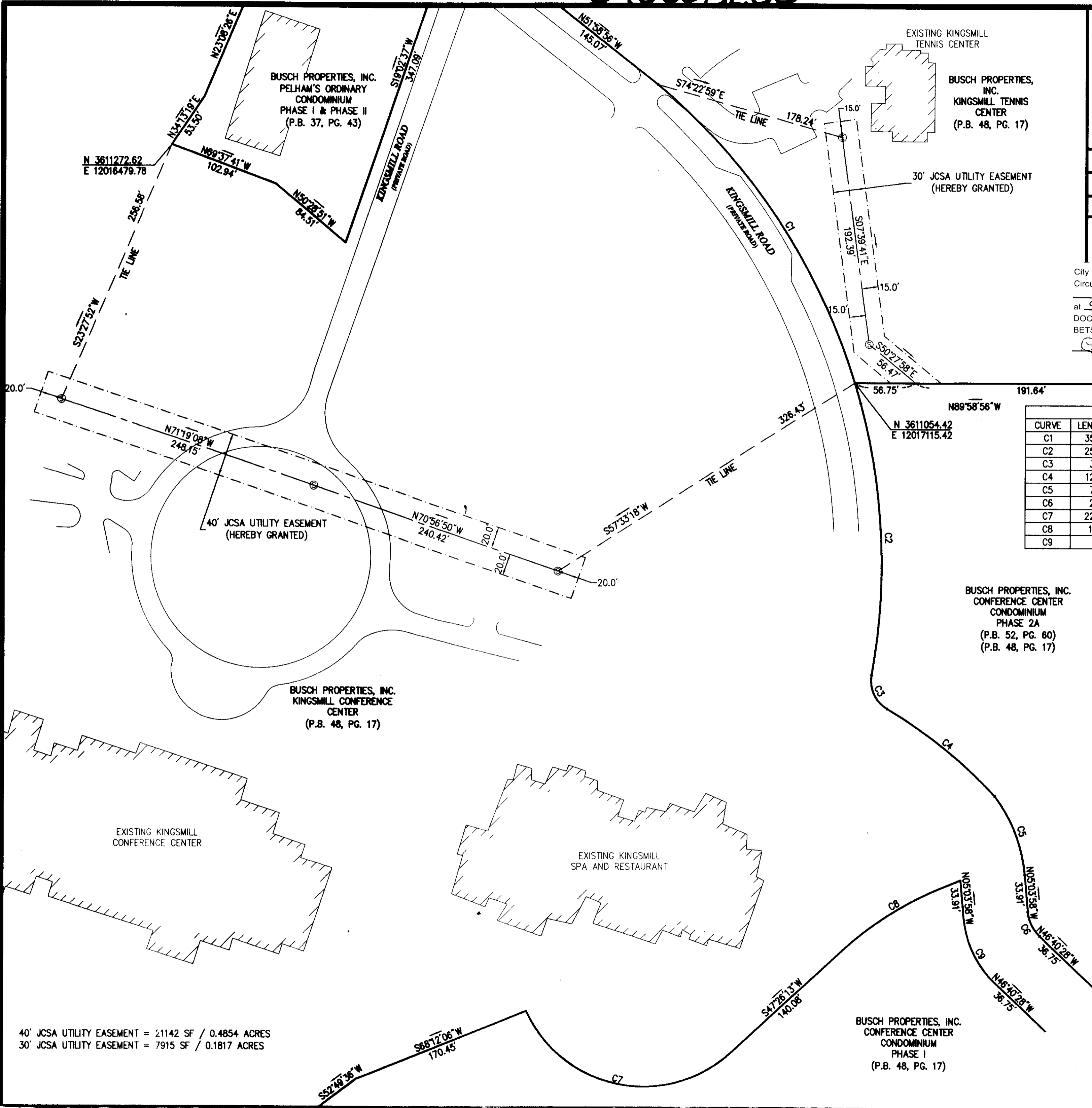
VHB Vanasse Hangen Brustlin, Inc.
Transportation Land Development Environmental Services
351 McLaws Circle, Suite 3
Williamsburg, Virginia 23185-6316
(757) 220 0500 FAX (757) 220 8544

City of Williamsburg & County of James City
Circuit Court: This PLAT was recorded on
at 9:00 AM/PM on 1-28-2009 PG. 1
DOCUMENT # 090003200
BETSY B. WOOLRIDGE, CLERK
Betsy B. Woolridge Clerk

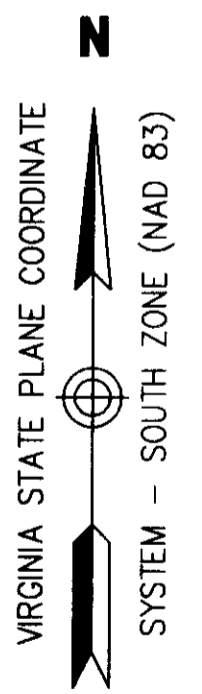
Legend
⊙ SANITARY MANHOLE
P.B. PLAT BOOK
PG. PAGE

3 Large/Small Plats(s) Recorded
herewith as # 090003200

CURVE	LENGTH	RADIUS	DELTA	TANGENT	BEARING	CHORD
C1	355.07	575.00	35°22'51"	183.40	N32°51'27"W	349.46
C2	253.50	575.00	25°15'36"	128.84	N02°32'13"W	251.45
C3	36.68	30.00	70°03'13"	21.03	N24°56'02"W	34.44
C4	129.40	430.00	17°14'31"	65.19	N51°20'23"W	128.91
C5	79.00	140.30	32°15'43"	40.58	N21°11'50"W	77.96
C6	25.74	35.45	41°36'07"	13.47	N25°52'24"W	25.18
C7	226.08	120.00	107°56'36"	164.99	S78°35'29"E	194.09
C8	129.11	311.00	23°47'10"	65.50	N59°19'48"E	128.18
C9	69.31	95.45	41°36'22"	36.26	S25°52'17"E	67.80



BUSCH PROPERTIES, INC.
CONFERENCE CENTER
CONDOMINIUM
PHASE 2A
(P.B. 52, PG. 60)
(P.B. 48, PG. 17)



40' JCSA UTILITY EASEMENT = 21142 SF / 0.4854 ACRES
30' JCSA UTILITY EASEMENT = 7915 SF / 0.1817 ACRES

BUSCH PROPERTIES, INC.
CONFERENCE CENTER
CONDOMINIUM
PHASE 1
(P.B. 48, PG. 17)