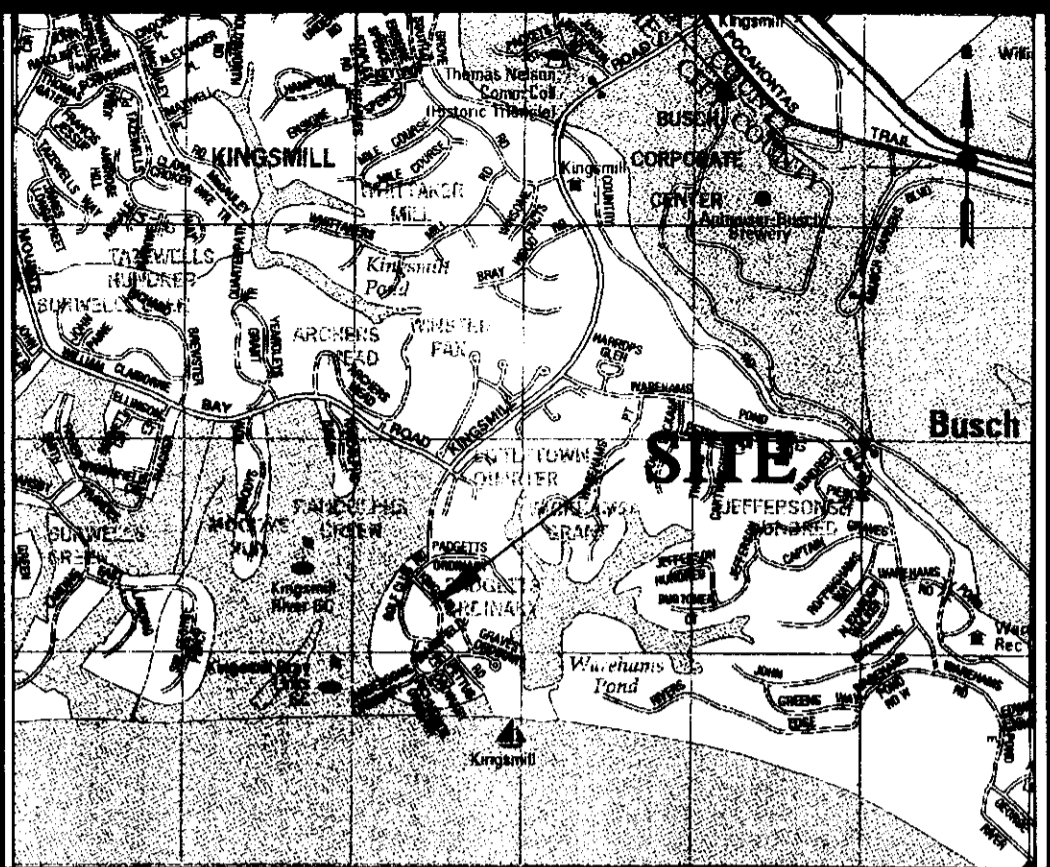


090003199



COPYRIGHT ADC THE MAP PEOPLE PERMITTED USE NUMBER 20409135
VICINITY MAP: 1" = 2000'

PLAT SHOWING JCSA UTILITY EASEMENTS
ON THE PROPERTY STANDING
IN THE NAME OF
BUSCH PROPERTIES, INC.
PLAT BOOK 48, PAGE 17
ROBERTS DISTRICT
JAMES CITY COUNTY, VIRGINIA

DATE: 09/03/08 SHEET 1 OF 2 SCALE: 1"=60'
PROJECT NO: 31039.08 DRAWN BY: MAG

VHB *Vanasse Hangen Brustlin, Inc.*
Transportation Land Development Environmental Services
351 McLaws Circle, Suite 3
Williamsburg, Virginia 23185-6316
(757) 220 0500 FAX (757) 220 8544

Owner's Consent

THE GRANTING OF VARIOUS EASEMENTS SHOWN HEREON IS WITH THE FREE CONSENT AND IN ACCORDANCE WITH THE DESIRES OF THE UNDERSIGNED OWNERS AND PROPRIETORS.

BUSCH PROPERTIES, INC.
KINGSMILL RESORT

Robin Carson 10/14/08
ROBIN CARSON DATE

Certificate Of Notarization

STATE OF VA
COUNTY/CITY OF James City, TO WIT:

I, Allison M. Hayes A NOTARY PUBLIC, IN AND FOR THE JURISDICTION AFORESAID, DO HEREBY CERTIFY THE Robin Carson, Managing Dir WHOSE NAME(S) ARE SIGNED TO THE FOREGOING WRITING HAVE ACKNOWLEDGED THE SAME BEFORE ME IN MY JURISDICTION AFORESAID. HE/SHE/THEY IS/ARE PERSONALLY KNOWN TO ME OR HAS/HAVE PRODUCED VADL AS IDENTIFICATION.

GIVEN UNDER MY HAND THIS 14 DAY OF October, 2008.

Allison M. Hayes April 30, 2010
NOTARY PUBLIC #150666 MY COMMISSION EXPIRES

**State Of Virginia
James City County**

IN THE CLERK'S OFFICE OF THE CIRCUIT COURT FOR JAMES CITY COUNTY,
THE 29 DAY OF January, 2009 THIS MAP WAS PRESENTED AND ADMITTED
TO RECORD AS THE LAW DIRECTS AS INSTRUMENT NUMBER 090003199 at 8:50 a.m.

TESTE: BETSY B. WOOLRIDGE, CLERK OF CIRCUIT COURT
CLERK
BY: DeeAnn Hallman D.C.

2 Large/Small Plat(s) Recorded
herewith as # 090003199

General Notes

1. THE PROPERTY LINES SHOWN ON THIS PLAN ARE BASED UPON AN ACTUAL FIELD SURVEY PERFORMED BY VANASSE HANGEN BRUSTLIN, INC. IN JULY 2008, AND FROM DEEDS AND PLANS OF RECORD.
2. NO TITLE REPORT WAS FURNISHED, THEREFORE ALL ENCUMBRANCES ON THE PROPERTIES MAY NOT BE SHOWN.
3. THIS IS NOT A BOUNDARY SURVEY. THE PURPOSE OF THIS PLAT IS TO SHOW THE CREATION OF SANITARY SEWER EASEMENTS UPON BUSCH PROPERTIES, INC.
4. EASEMENTS DENOTED AS "JCSA UTILITY EASEMENTS" ARE FOR THE EXCLUSIVE USE OF THE JAMES CITY SERVICE AUTHORITY AND THE PROPERTY OWNER. OTHER UTILITY SERVICE PROVIDERS DESIRING TO USE THESE EASEMENTS WITH THE EXCEPTION OF THE PERPENDICULAR UTILITY CROSSINGS MUST OBTAIN AUTHORIZATION FOR ACCESS AND USE FROM JCSA AND THE PROPERTY OWNER. ADDITIONALLY, JCSA SHALL NOT BE HELD RESPONSIBLE FOR ANY DAMAGE TO IMPROVEMENTS WITHIN THIS EASEMENT, FROM ANY CAUSE.
5. ALL PARCELS SHOWN ARE SERVED BY PUBLIC WATER AND PUBLIC SEWER SYSTEMS.



090003199

PLAT SHOWING JCSA UTILITY EASEMENTS
ON THE PROPERTY STANDING
IN THE NAME OF
BUSCH PROPERTIES, INC.
PLAT BOOK 48, PAGE 17
ROBERTS DISTRICT
JAMES CITY COUNTY, VIRGINIA

DATE: 09/03/08 SHEET 2 OF 2 SCALE: 1"=60'
PROJECT NO: 31039.08 DRAWN BY: MAG

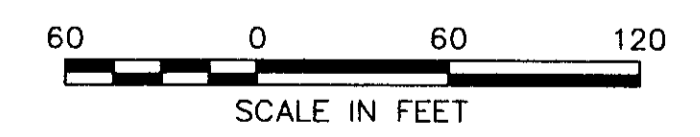
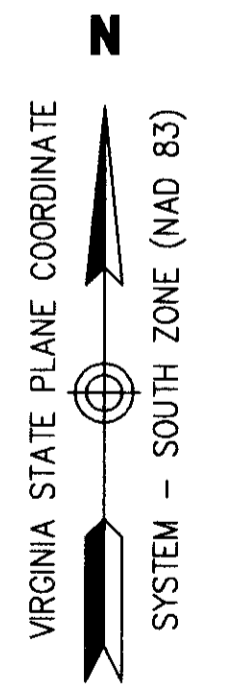
VHB *Vanasse Hangen Brustlin, Inc.*
Transportation Land Development Environmental Services
351 McLaws Circle, Suite 3
Williamsburg, Virginia 23185-6316
(757) 220 0500 FAX (757) 220 8544

Legend

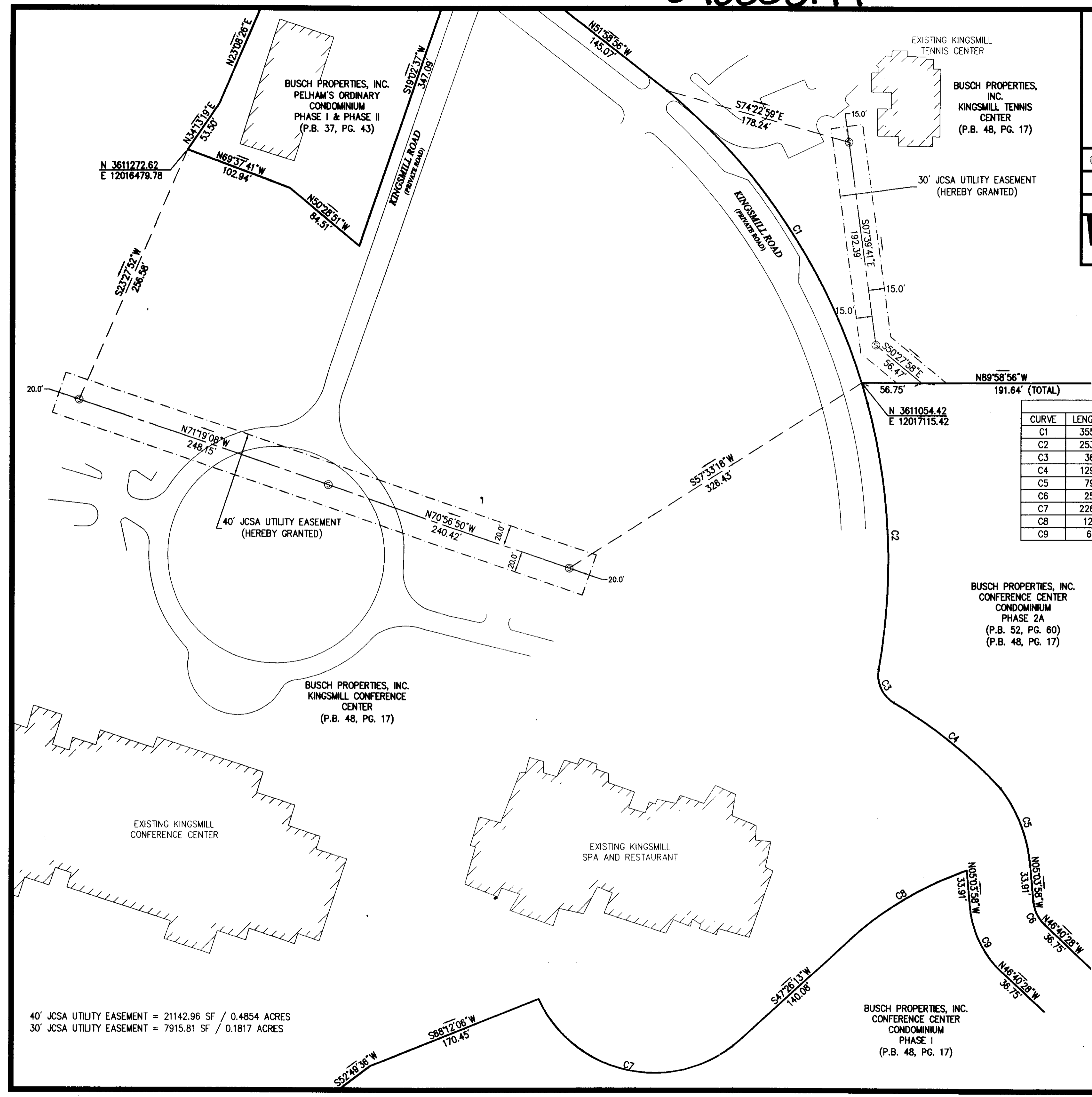
⊙ SANITARY MANHOLE
P.B. PLAT BOOK
PG. PAGE

CURVE TABLE

CURVE	LENGTH	RADIUS	DELTA	TANGENT	BEARING	CHORD
C1	355.07	575.00	35°22'51"	183.40	N32°51'27"W	349.46
C2	253.50	575.00	25°15'36"	128.84	N02°32'13"W	251.45
C3	36.68	30.00	70°03'13"	21.03	N24°56'02"W	34.44
C4	129.40	430.00	17°14'31"	65.19	N51°20'23"W	128.91
C5	79.00	140.30	32°15'43"	40.58	N21°11'50"W	77.96
C6	25.74	35.45	41°36'07"	13.47	N25°52'24"W	25.18
C7	226.08	120.00	107°56'36"	164.99	S78°35'29"E	194.09
C8	129.11	311.00	23°47'10"	65.50	N59°19'48"E	128.18
C9	69.31	95.45	41°36'22"	36.26	S25°52'17"E	67.80



Large Record Plotted Record
 as of 090003199



40' JCSA UTILITY EASEMENT = 21142.96 SF / 0.4854 ACRES
30' JCSA UTILITY EASEMENT = 7915.81 SF / 0.1817 ACRES

BUSCH PROPERTIES, INC.
CONFERENCE CENTER
CONDOMINIUM
PHASE I
(P.B. 48, PG. 17)

BUSCH PROPERTIES, INC.
CONFERENCE CENTER
CONDOMINIUM
PHASE 2A
(P.B. 52, PG. 60)
(P.B. 48, PG. 17)

BUSCH PROPERTIES, INC.
KINGSMILL CONFERENCE
CENTER
(P.B. 48, PG. 17)

BUSCH PROPERTIES,
INC.
KINGSMILL TENNIS
CENTER
(P.B. 48, PG. 17)

BUSCH PROPERTIES, INC.
PELHAM'S ORDINARY
CONDOMINIUM
PHASE I & PHASE II
(P.B. 37, PG. 43)

City of Williamsburg & County of James City
Circuit Court. This PLAT was recorded on
at 8:50 AM on 09-03-08
DOCUMENT # 090003199 PG. 17
BETSY B. WOOLRIDGE, CLERK
Betsy B. Woolridge Clerk