

080700

PLAT SHOWING  
SUBDIVISION AND RIGHT OF WAY DEDICATION  
**THE VILLAGE AT QUARTERPATH  
PHASE II**  
CITY OF WILLIAMSBURG, VIRGINIA

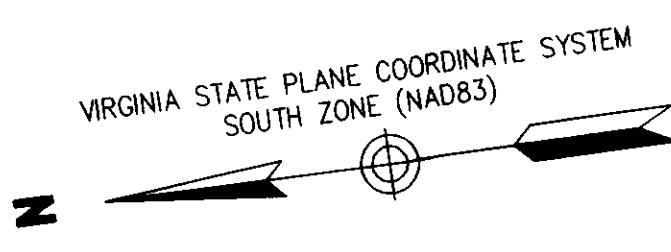
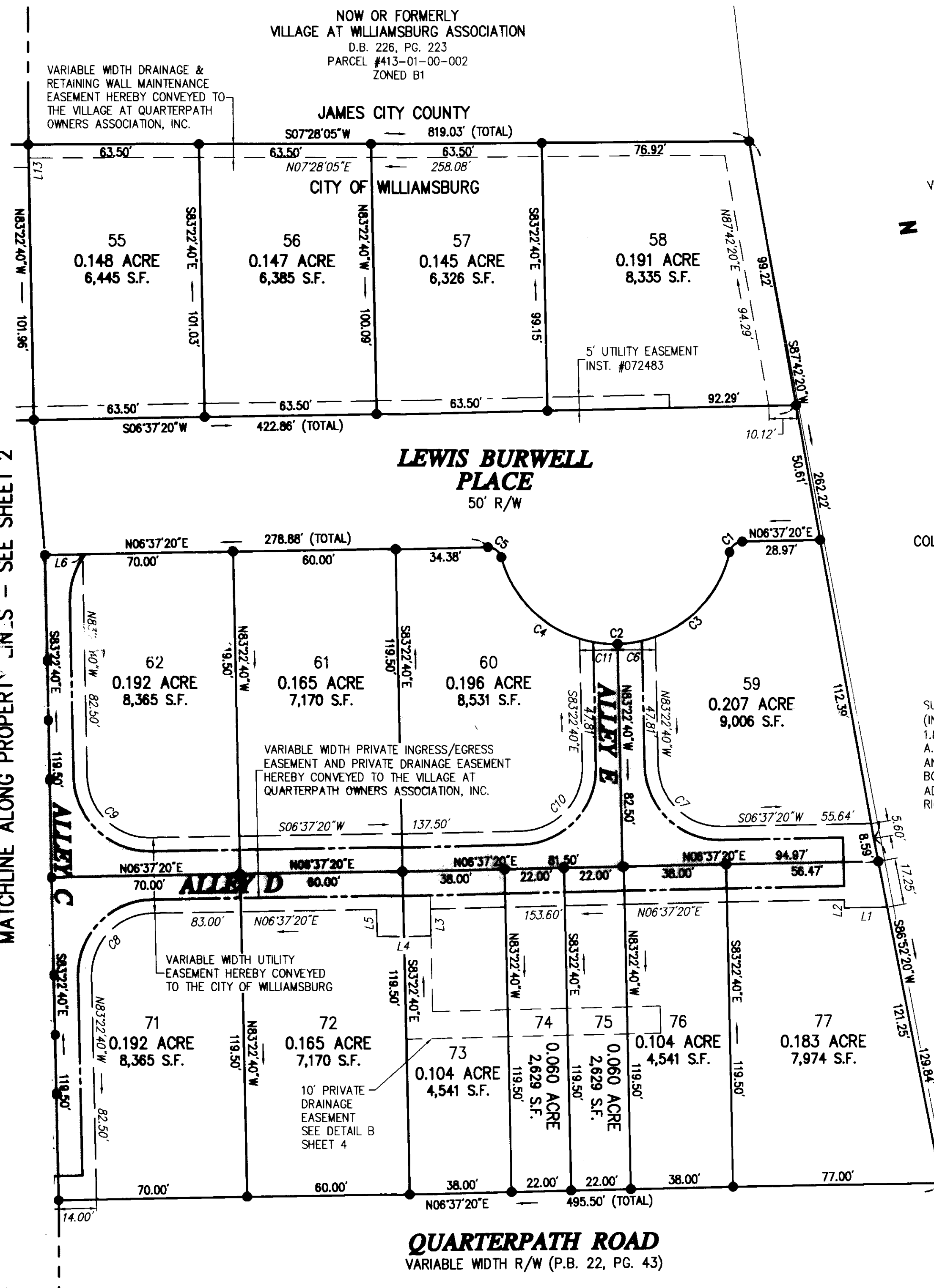
DATE: 01/23/08 SHEET 3 OF 4 SCALE: 1"=30'  
PROJECT NO: 31980.01 DRAWN BY: DWP

**VHB** Vanessa Hangen Brustlin, Inc.  
Transportation Land Development Environmental Services  
5544 Greenwich Road, Suite 302  
Virginia Beach, Virginia 23462-6563  
(757) 490-0132 • FAX (757) 490-0136

REVISED: 03/18/08



MATCHLINE ALONG PROPERTY LINES - SEE SHEET 2



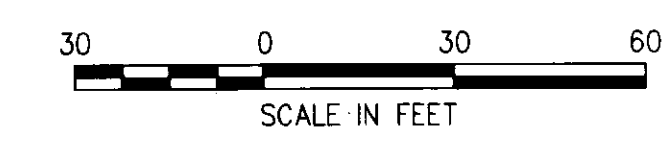
NOW OR FORMERLY  
COLONIAL WILLIAMSBURG FOUNDATION  
INST. #020042128  
PARCEL #529-07-00-003  
ZONED RS-1

SURVEY OF QUARTERPATH AT WILLIAMSBURG,  
(INST. #020042128), DISCOVERED A GAP OF  
1.82' AT THE SOUTHWEST CORNER OF PARCEL  
A. ADJOINER SURVEY DOES NOT SHOW AN  
ANGLE POINT 129.84' ALONG THE SOUTHERN  
BOUNDARY FROM QUARTERPATH ROAD  
ADJOINER SURVEY EXTENDS 13.15' TO THE  
RIGHT-OF-WAY OF QUARTERPATH ROAD.

**Notes:**

- 1. SEE SHEET 4 FOR LINE DATA TABLE
- 2. SEE SHEETS 2 AND 4 FOR CURVE DATA TABLES

LOCATION OF ALLEYS ALLEYS AND  
DRAINAGE SYSTEMS WITHIN THE ALLEYS  
ARE PRIVATE AND WILL BE MAINTAINED  
BY THE VILLAGE AT QUARTERPATH OWNERS'  
ASSOCIATION, INC.



4 Large/Small Plat(s) Recorded  
herewith as # 080700

**State of Virginia  
City of Williamsburg**

IN THE CLERK'S OFFICE OF THE CIRCUIT COURT FOR THE CITY OF WILLIAMSBURG AND  
COUNTY OF JAMES CITY, VIRGINIA THIS 7th DAY OF April, 2008.  
THIS MAP WAS PRESENTED AND ADMITTED TO RECORD AS THE LAW DIRECTS AS  
INSTRUMENT NUMBER 080700 @ 11:10 AM

TESTE: Britney B. Woodruff, Clerk  
CLERK  
BY: Claudia H. Brinkholz, Dep. Clerk