

080700

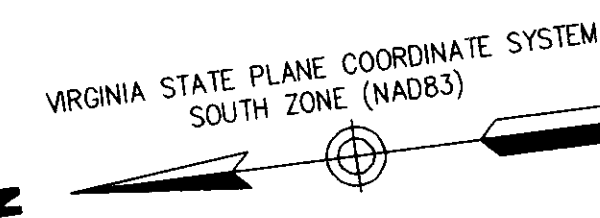
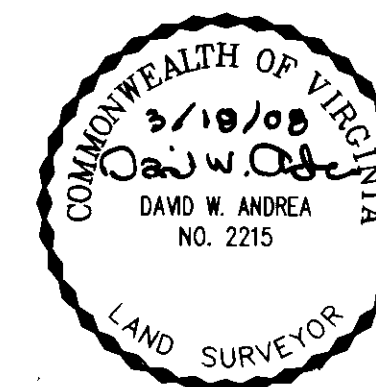
PLAT SHOWING  
 SUBDIVISION AND RIGHT OF WAY DEDICATION  
**THE VILLAGE AT QUARTERPATH  
 PHASE II**  
 CITY OF WILLIAMSBURG, VIRGINIA

DATE: 01/23/08 SHEET 2 OF 4 SCALE: 1"=30'

PROJECT NO: 31980.01 DRAWN BY: DWP

**VHB** Vanasse Hangen Brustlin, Inc.  
 Transportation Land Development Environmental Services  
 5544 Greenbush Road, Suite 302  
 Virginia Beach, Virginia 23462-6563  
 (757) 490-0132 • FAX (757) 490-0136

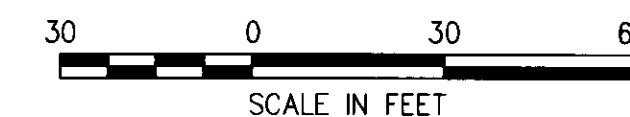
REVISED: 03/18/08



**Notes:**

- 1. SEE SHEET 4 FOR LINE DATA TABLE
- 1. SEE SHEETS 2 AND 4 FOR CURVE DATA TABLES

LOCATION OF ALLEYS - ALLEYS AND DRAINAGE SYSTEMS WITHIN THE ALLEYS ARE PRIVATE AND WILL BE MAINTAINED BY THE VILLAGE AT QUARTERPATH OWNERS ASSOCIATION, INC.



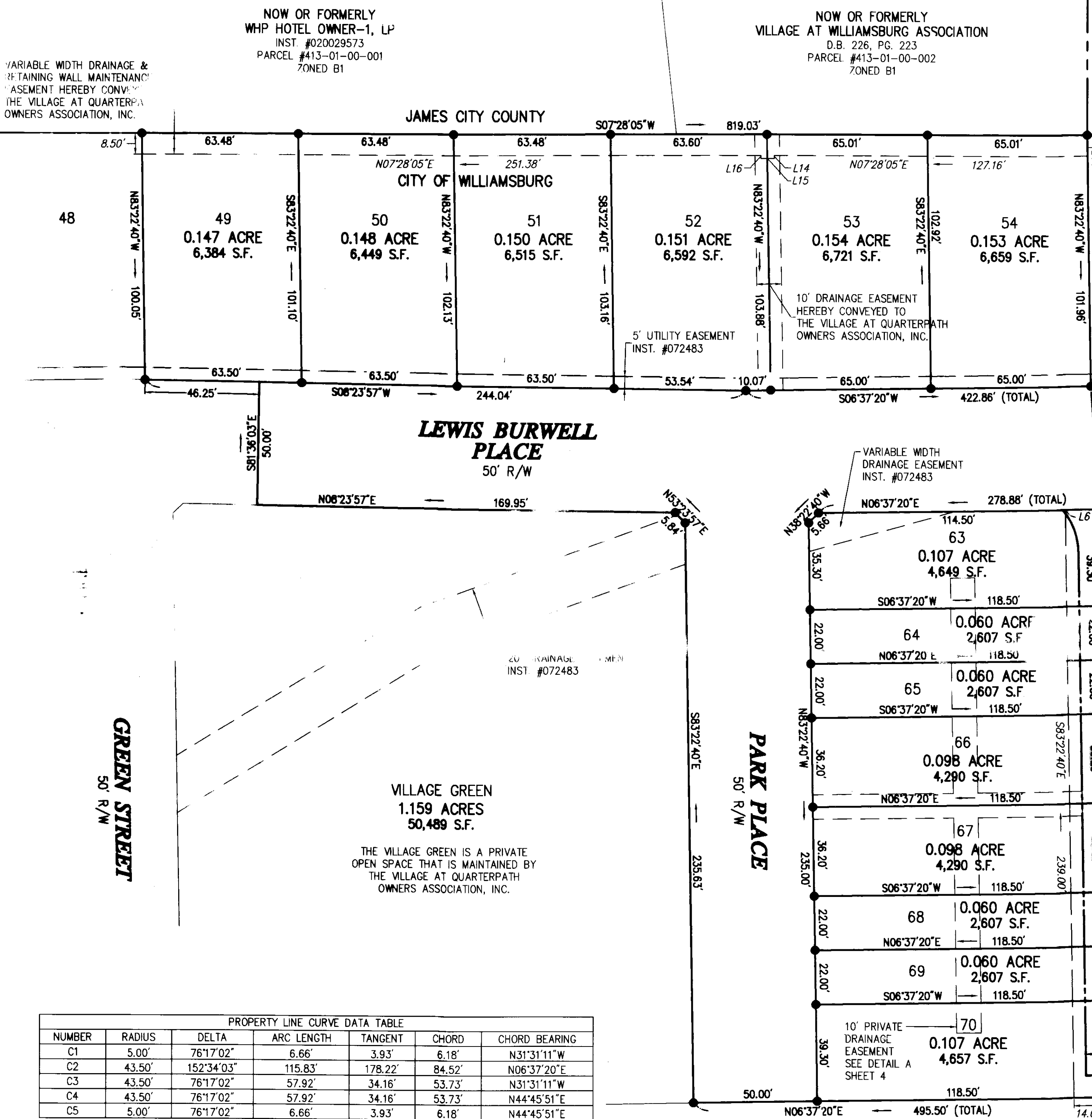
4 Large/Small Plat(s) Recorded herewith as # 080700

**State Of Virginia  
 City Of Williamsburg**

IN THE CLERK'S OFFICE OF THE CIRCUIT COURT FOR THE CITY OF WILLIAMSBURG AND COUNTY OF JAMES CITY, VIRGINIA THIS 7th DAY OF April, 2008. THIS MAP WAS PRESENTED AND ADMITTED TO RECORD AS THE LAW DIRECTS AS INSTRUMENT NUMBER 080700 @ 11:10 Am

TESTE: Steph B. Workman, Clerk  
 CLERK

BY: Claudia H. ...



PROPERTY LINE CURVE DATA TABLE

NUMBER	RADIUS	DELTA	ARC LENGTH	TANGENT	CHORD	CHORD BEARING
C1	5.00'	76°17'02"	6.66'	3.93'	6.18'	N31°31'11"W
C2	43.50'	152°34'03"	115.83'	178.22'	84.52'	N06°37'20"E
C3	43.50'	76°17'02"	57.92'	34.16'	53.73'	N31°31'11"W
C4	43.50'	76°17'02"	57.92'	34.16'	53.73'	N44°45'51"E
C5	5.00'	76°17'02"	6.66'	3.93'	6.18'	N44°45'51"E

**QUARTERPATH ROAD**  
 VARIABLE WIDTH R/W (P.B. 22, PG. 43)

VARIABLE WIDTH PRIVATE INGRESS/EGRESS EASEMENT AND PRIVATE DRAINAGE EASEMENT HEREBY CONVEYED TO THE VILLAGE AT QUARTERPATH OWNERS ASSOCIATION, INC.

MATCHLINE ALONG PROPERTY LINES - SEE SHEET 3

VARIABLE WIDTH DRAINAGE & RETAINING WALL MAINTENANCE EASEMENT HEREBY CONVEYED TO THE VILLAGE AT QUARTERPATH OWNERS ASSOCIATION, INC.

NOW OR FORMERLY  
 WHP HOTEL OWNER-1, LP  
 INST. #020029573  
 PARCEL #413-01-00-001  
 ZONED B1

NOW OR FORMERLY  
 VILLAGE AT WILLIAMSBURG ASSOCIATION  
 D.B. 226, PG. 223  
 PARCEL #413-01-00-002  
 ZONED B1

JAMES CITY COUNTY

CITY OF WILLIAMSBURG

**LEWIS BURWELL PLACE**  
 50' R/W

**GREEN STREET**  
 50' R/W

**PARK PLACE**  
 50' R/W

**ALLEY C**

**VILLAGE GREEN**  
 1.159 ACRES  
 50,489 S.F.

THE VILLAGE GREEN IS A PRIVATE OPEN SPACE THAT IS MAINTAINED BY THE VILLAGE AT QUARTERPATH OWNERS ASSOCIATION, INC.

VARIABLE WIDTH DRAINAGE EASEMENT INST. #072483

VARIABLE WIDTH DRAINAGE EASEMENT INST. #072483

10' PRIVATE DRAINAGE EASEMENT SEE DETAIL A SHEET 4