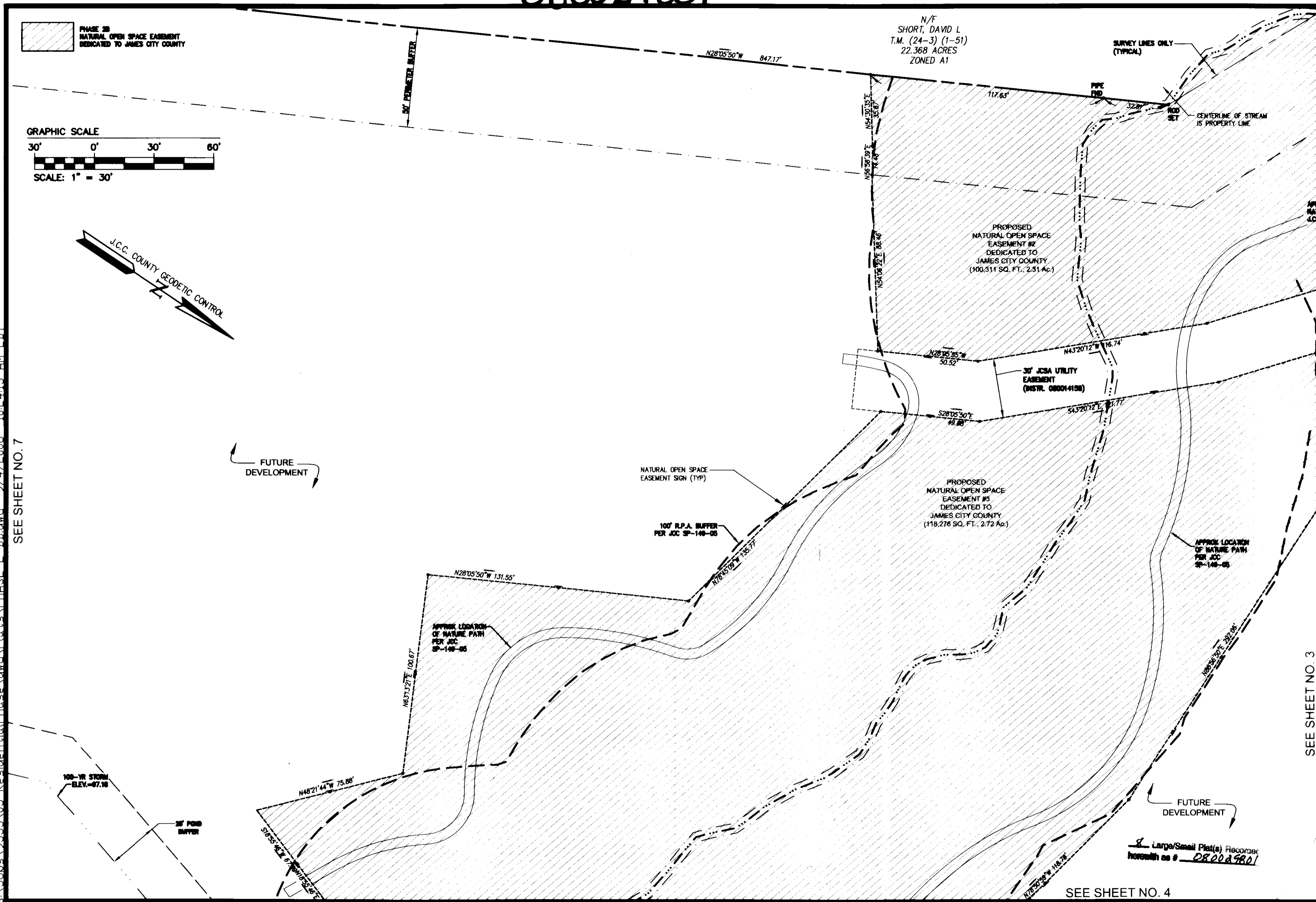
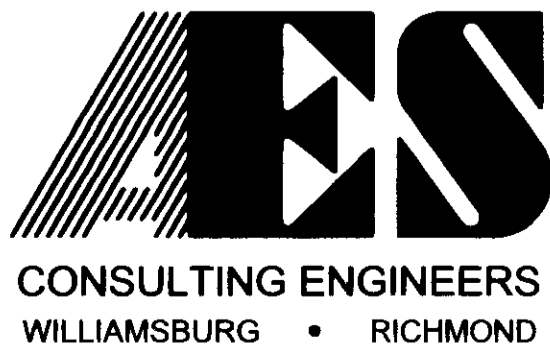


080029801



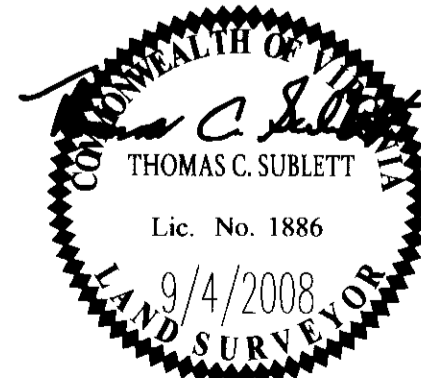
S:\Jobs\9353\05-Residential\Phase\dwg\Plats\PHASE-2\_BB.dwg 9/4/2008 10:24:13 AM EDT  
SEE SHEET NO. 7

S:\Jobs\9353\05-Residential\Phase\dwg\Plats\PHASE-2\_BB\_WITH ADDED LOTS.dwg 11/13/2008 11:00:35 AM michael.powers



5248 Olde Towne Road, Suite 1  
Williamsburg, Virginia 23188  
(757) 253-0040  
Fax (757) 220-8994

PLAT OF SUBDIVISION  
**PHASE 2-B**  
**LIBERTY CROSSING**  
LOTS  
69-78, 108-112, 123-130, 135-138 &  
NATURAL OPEN SPACE  
STONEHOUSE DISTRICT JAMES CITY COUNTY VIRGINIA



No.	DATE	REVISION / COMMENT / NOTE	BY

City of Williamsburg & County of James City  
Circuit Court: This PLAT was recorded on  
11 November 2008  
at 10:06 AM/PM, PB PG  
DOCUMENT # 080029801  
BETSY B. WOOLRIDGE, CLERK  
Betsy B. Woolridge Clerk

Designed AES	Drawn MEG
Scale 1" = 30'	Date 9/04/08
Project No. 9353-05	
Drawing No. 6 OF 8	